



Daily SCOPE Wave

MNC Financial Center Lt. 16

Jl. Kebon Sirih No. 21 – 27, Jakarta 10340, Indonesia

www.mncsekuritas.id

a member of MNC Group

Institution Research Team | herditya.wicaksana@mncgroup.com | +6221 29080 3111 Ext.52150

24 Mei 2021

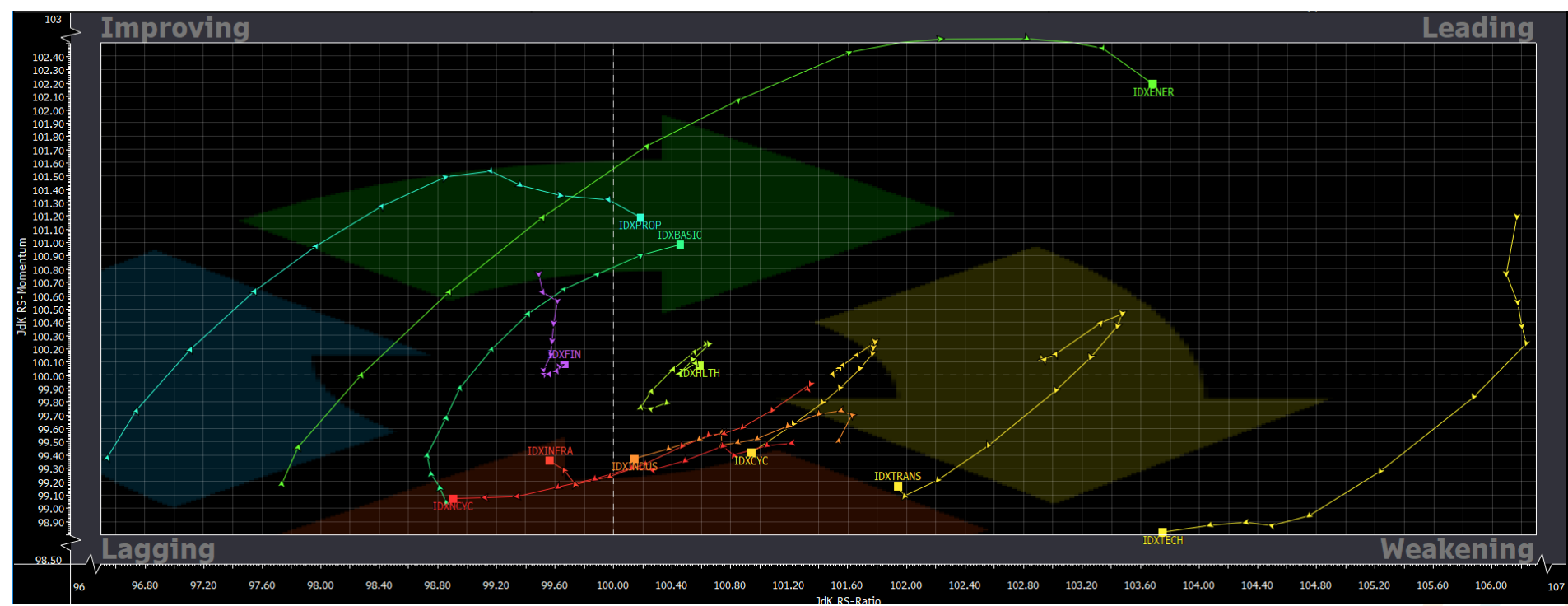
Jakarta Composite Index (JCI) *short term (1-2 days) bearish*

Posisi IHSG sedang membentuk wave [v] dari wave C, meskipun menguat namun akan cenderung terbatas.

Top picks of the Day:

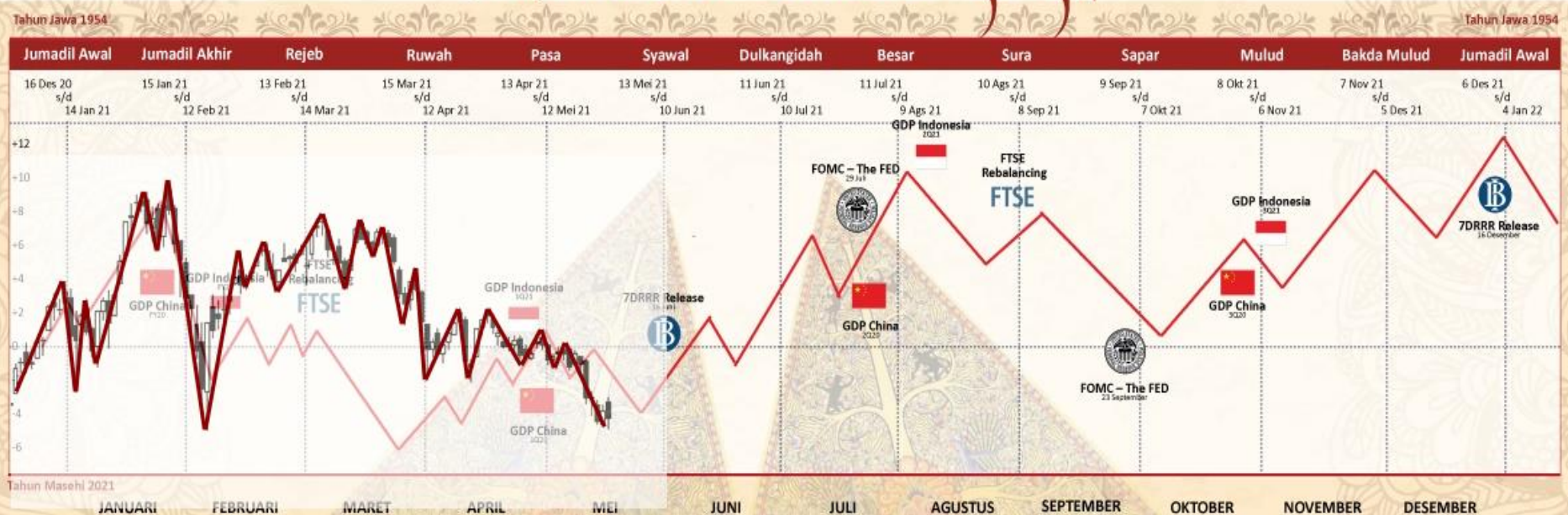
Stock	Close Price	Recommendation	Tactical Moves
BMRI	5,825	Buy on Weakness	BMRI sudah berada di akhir wave [v] dari wave C dari wave (A).
EXCL	2,240	Buy on Weakness	EXCL sedang berada di awal wave (C).
PTBA	2,150	Buy on Weakness	PTBA sudah berada di akhir wave 5 dari wave (C) dari wave [B].
LPKR	164	Sell on Strength	LPKR sedang membentuk wave [iv] dari wave C dari wave (B).

RRG – Relative Rotation Graph



MNCS Primbon Index

Primbon Index 2021

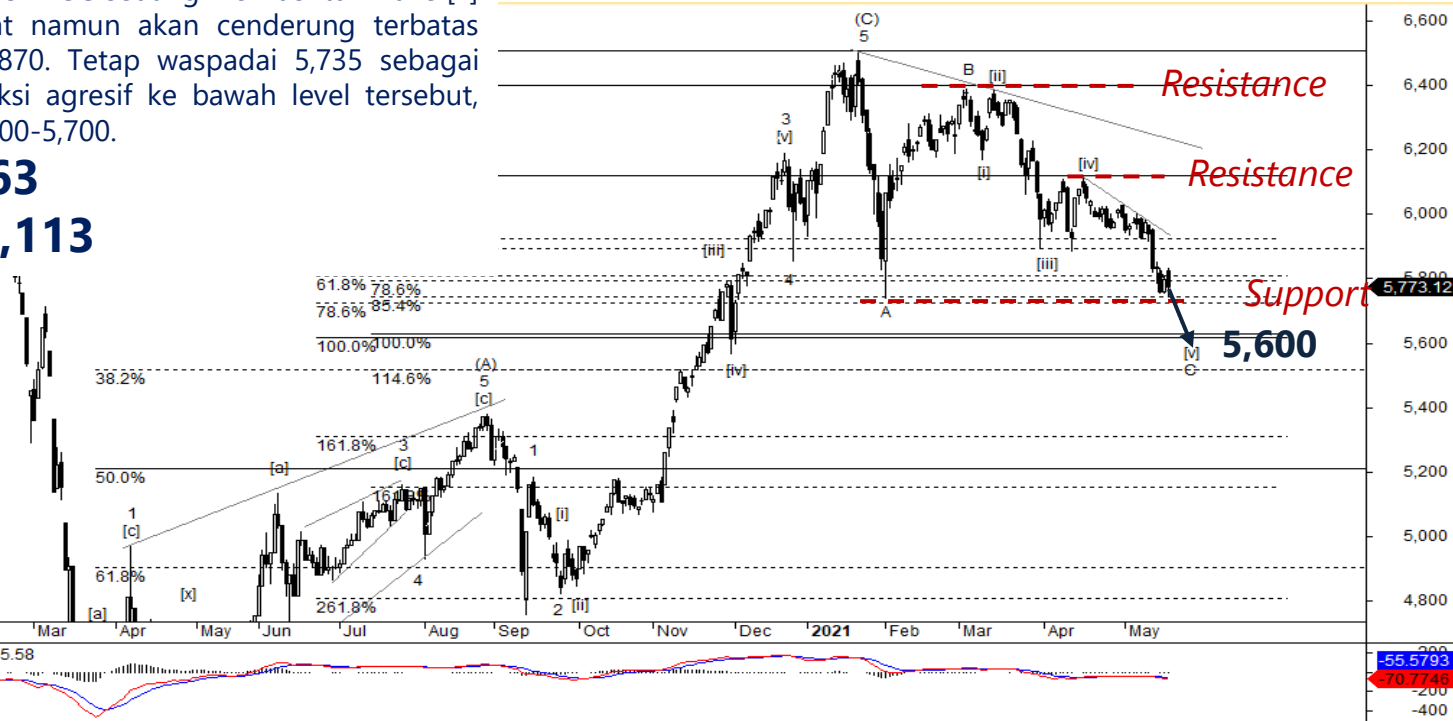


JCI – Wave 5

Pada penutupan perdagangan pekan kemarin (21/5), IHSG bergerak terkoreksi 0,4% di level 5,773. Posisi IHSG sedang membentuk wave [v] dari wave C, meskipun menguat namun akan cenderung terbatas untuk menguji rentang 5,840-5,870. Tetap waspadai 5,735 sebagai support IHSG, bila IHSG terkoreksi agresif ke bawah level tersebut, maka IHSG akan mengarah ke 5,600-5,700.

Support: 5,735, 5,563

Resistance: 6,033, 6,113



BMRI – Buy on Weakness

Pada penutupan perdagangan pekan kemarin (21/5), BMRI ditutup menguat 3,1% ke level 5,825 diikuti dengan tekanan beli yang cukup tinggi. Kami memperkirakan, saat ini posisi BMRI sudah berada di akhir wave [v] dari wave C dari wave (A). Hal ini berarti, meskipun terkoreksi maka akan relatif terbatas dan berpeluang untuk melanjutkan penguatannya.

Buy on Weakness: 5,525-5,800

Target Price: 6,000, 6,600

Stoploss: below 5,450



EXCL – Buy on Weakness

EXCL ditutup menguat 0,9% di level 2,240 pada perdagangan Jumat kemarin (21/5). Kami memperkirakan saat ini EXCL sedang berada di awal wave (C), sehingga EXCL diperkirakan masih berpeluang untuk melanjutkan penguatannya.

Buy on Weakness: 2,120-2,200

Target Price: 2,400, 2,530

Stoploss: below 2,090



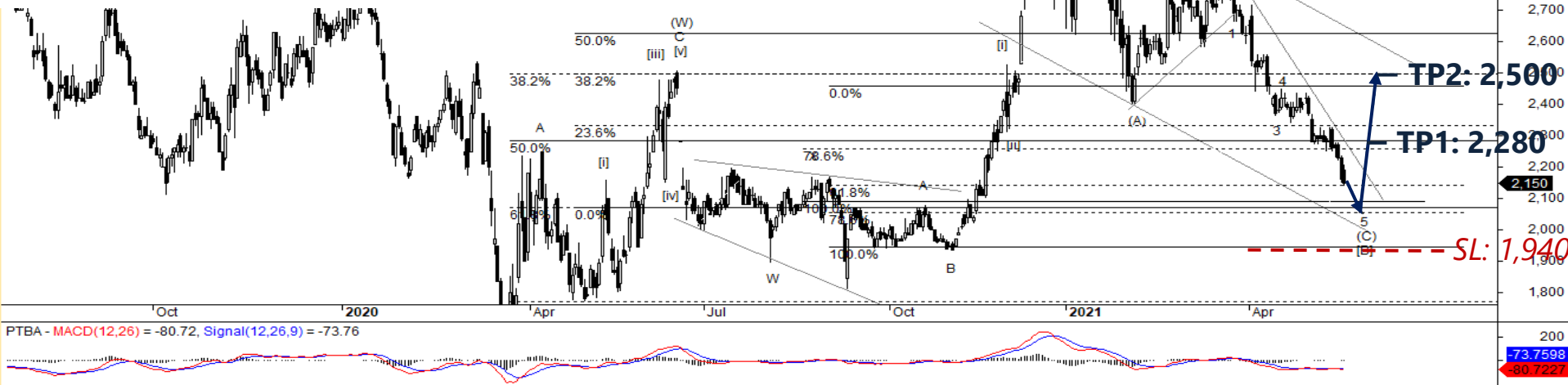
PTBA – Buy on Weakness

Pada perdagangan Jumat kemarin (21/5), PTBA kembali terkoreksi 0,5% ke level 2,150. Posisi PTBA saat ini kami perkirakan sudah berada di akhir wave 5 dari wave (C) dari wave [B], sehingga koreksi PTBA diperkirakan sudah relatif terbatas dan berpeluang berbalik menguat.

Buy on Weakness: 2,050-2,100

Target Price: 2,280, 2,500

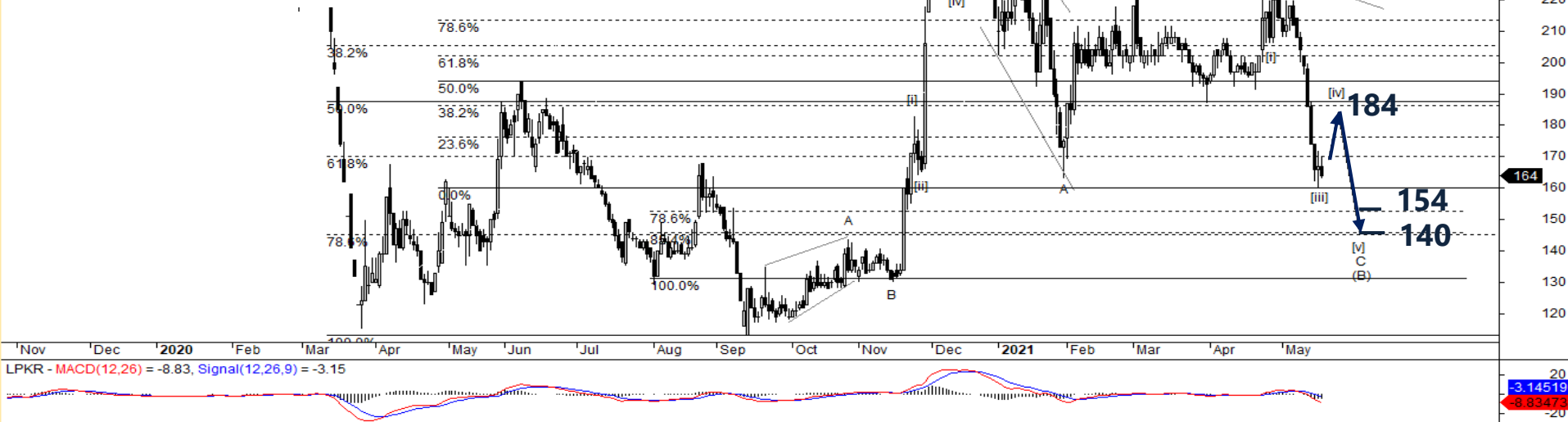
Stoploss: below 1,940



LPKR – Sell on Strength

Pekan kemarin (21/5), LPKR ditutup terkoreksi 1,8% ke level 164. Kami perkirakan saat ini LPKR sedang membentuk wave [iv] dari wave C dari wave (B), hal ini berarti penguatan LPKR akan relatif terbatas dan rawan terkoreksi kembali. Adapun rentang koreksi LPKR berada pada area 140-154 dan akan terkonfirmasi bila LPKR terkoreksi ke bawah 160.

Sell on Strength: 170-184



Institutional Research Team



Thendra Crisnanda – Head of Research
thendra.crisnanda@mncgroup.com
 Investment Strategy
 Ext. 52162



Victoria Venny – Research Analyst
victoria.nawang@mncgroup.com
 Telco, Toll Road, Logistic, Consumer, Poultry



T. Herditya Wicaksana – Technical Analyst
herditya.wicaksana@mncgroup.com
 Technical Specialist – Elliott Wave



Muhamad Rudy Setiawan – Research Analyst
muhamad.setiawan@mncgroup.com
 Construction, Property, Oil and Gas



Catherina Vincentia – Research Associate
catherina.vincentia@mncgroup.com
 Generalist



Aqil Triyadi – Research Associate
aqil.triyadi@mncgroup.com
 Generalist

Disclaimer : MNCS Daily Scope Wave has been issued by PT MNC Sekuritas, It may not be reproduced or further distributed or published, in whole or in part, for any purpose. PT MNC Sekuritas has based this document on information obtained from sources it believes to be reliable but which it has not independently verified; PT MNC Sekuritas makes no guarantee, representation or warranty and accepts no responsibility to liability as to its accuracy or completeness. Expression of opinion herein are those of the research department only and are subject to change without notice. This document is not and should not be construed as an offer or the solicitation of an offer to purchase or subscribe or sell any investment. PT MNC Sekuritas and its affiliates and/or their offices, directors and employees may own or have positions in any investment mentioned herein or any investment related thereto and may from time to time add to or dispose of any such investment. PT MNC Sekuritas and its affiliates may act as market maker or have assumed an underwriting position in the securities of companies discussed herein (or investment related thereto) and may sell them to or buy them from customers on a principal basis and may also perform or seek to perform investment banking or underwriting services for or relating to those companies.