



Daily SCOPE Wave

MNC Financial Center Lt. 16

Jl. Kebon Sirih No. 21 – 27, Jakarta 10340, Indonesia

www.mncsekuritas.id

a member of MNC Group

Institution Research Team | herditya.wicaksana@mncgroup.com | +6221 29080 3111 Ext.52150

2 Agustus 2021

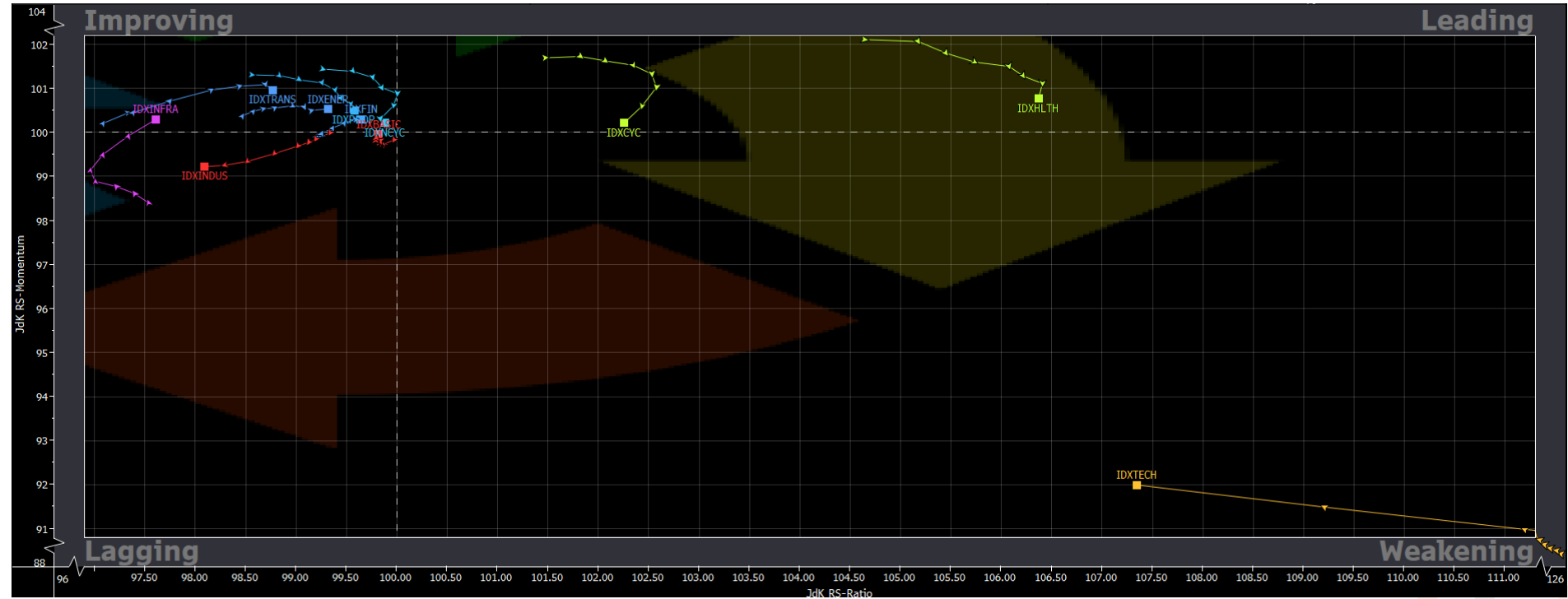
Jakarta Composite Index (JCI) short term (1-2 days) bullish

Selama IHSG masih berada di atas level support terdekatnya 6,015 dan 5,947, maka pergerakan IHSG saat ini masih berada pada bagian dari wave [iii] dari wave C.

Top picks of the Day:

Stock	Close Price	Recommendation	Tactical Moves
ELSA	262	Spec Buy	ELSA saat ini sedang berada di awal wave (1) dari wave [C].
LPPF	1,805	Spec Buy	LPPF saat ini sedang berada di awal wave (B).
PTBA	2,230	Buy on Weakness	PTBA sedang berada di awal wave [v] dari wave 3.
LSIP	1,125	Buy on Weakness	LSIP sedang berada pada awal wave [iii] dari wave C.

RRG – Relative Rotation Graph



MNCS Primbon Index

Primbon Index 2021



JCI – Sideways

IHSG kembali terkoreksi sebesar 0,8% ke level 6,070 pada perdagangan Jumat kemarin (30/7), pergerakan IHSG pun diikuti dengan munculnya tekanan jual yang cukup besar. Perhatikan level support terdekat di 6,015, selama IHSG masih berada di atas level supportnya maka pergerakan IHSG saat ini masih berada pada bagian dari wave [iii] dari wave C. Apabila IHSG berhasil menembus resistance di 6,166, maka IHSG akan menuju ke 6,200-6,230.

Support: 6,015, 5,947

Resistance: 6,166, 6,230



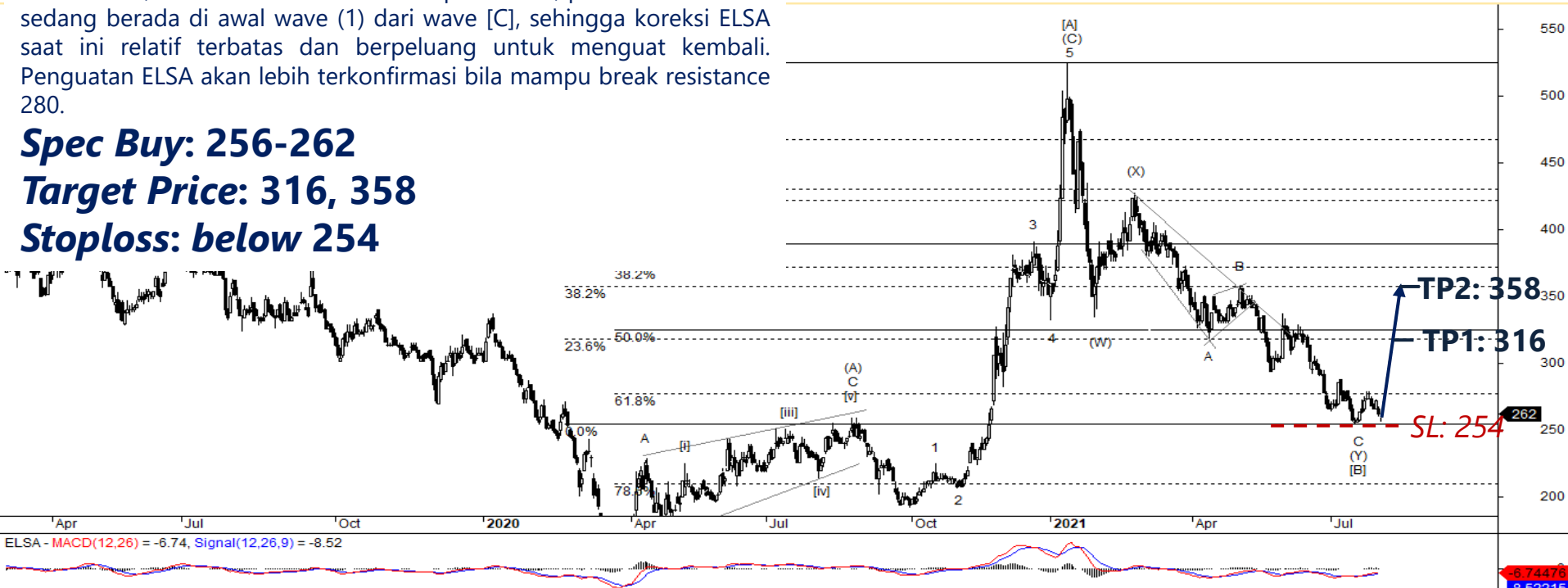
ELSA – Spec Buy

Pada perdagangan akhir pekan kemarin (30/7), ELSA ditutup terkoreksi 3,7% ke level 262. Kami memperkirakan, posisi ELSA saat ini sedang berada di awal wave (1) dari wave [C], sehingga koreksi ELSA saat ini relatif terbatas dan berpeluang untuk menguat kembali. Penguatan ELSA akan lebih terkonfirmasi bila mampu break resistance 280.

Spec Buy: 256-262

Target Price: 316, 358

Stoploss: below 254



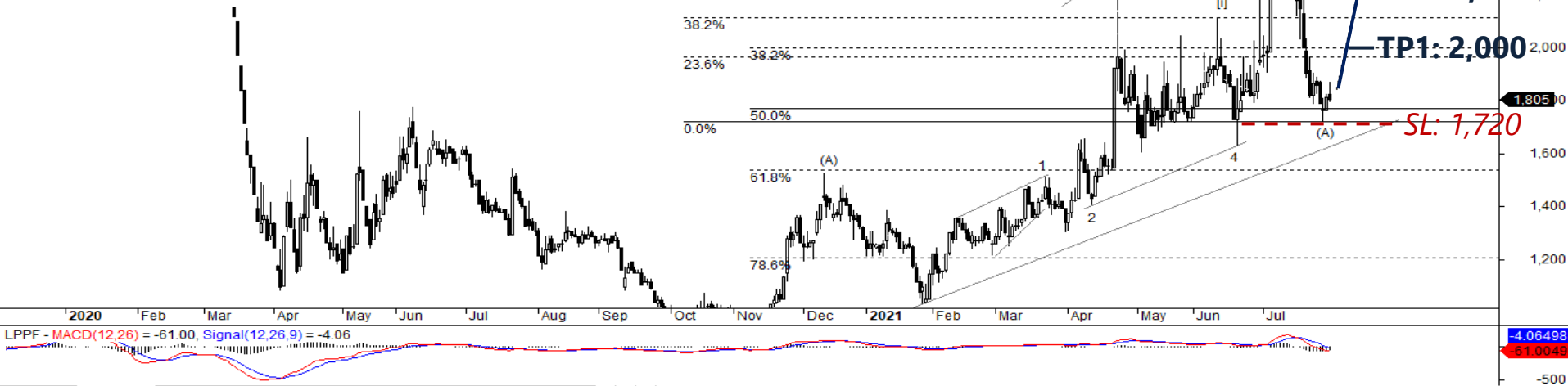
LPPF – Spec Buy

Menutup perdagangan pekan kemarin (30/7), LPPF ditutup terkoreksi 0,6% ke level 1,805. Selama LPPF tidak terkoreksi kembali ke bawah 1,720, maka posisi LPPF saat ini sedang berada di awal wave (B). Hal ini berarti, LPPF berpeluang untuk menguat kembali.

Spec Buy: 1,750-1,800

Target Price: 2,000, 2,200

Stoploss: below 1,720



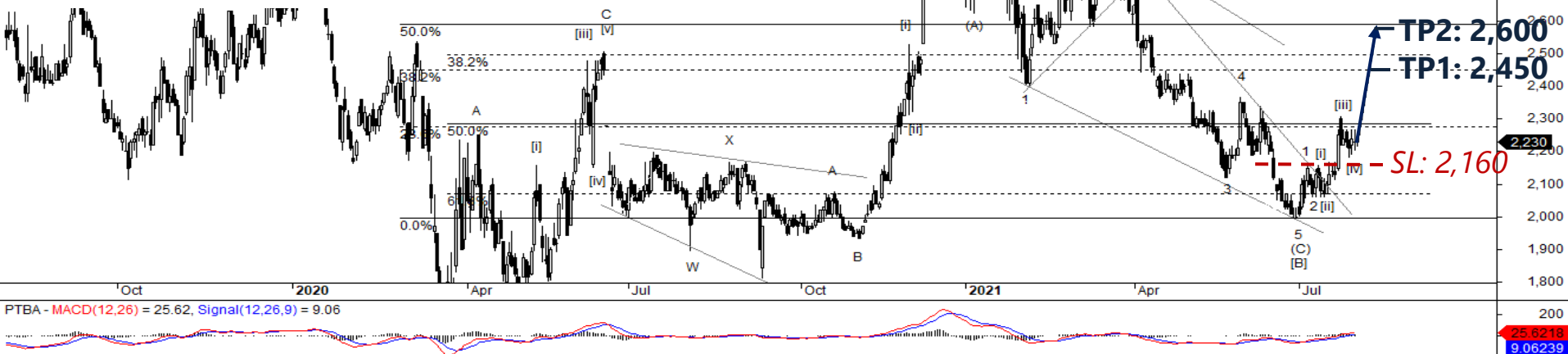
PTBA – Buy on Weakness

PTBA ditutup terkoreksi 0,4% ke level 2,230 pada perdagangan Jumat kemarin (30/7), pergerakan PTBA masih tertahan oleh level support terdekatnya di 2,180 dan MA60-nya. Kami memperkirakan, posisi PTBA saat ini sedang berada di awal wave [v] dari wave 3 dan akan lebih terkonfirmasi bila PTBA mampu break resistance 2,310.

Buy on Weakness: 2,190-2,230

Target Price: 2,450, 2,600

Stoploss: below 2,160



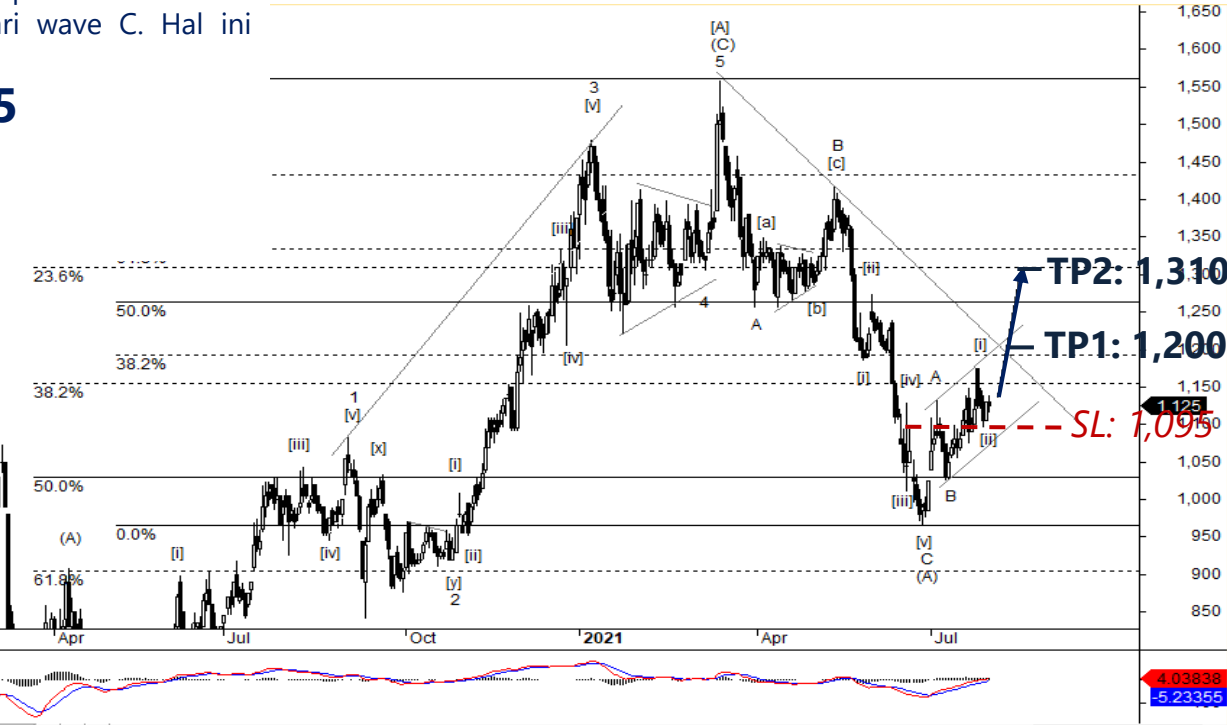
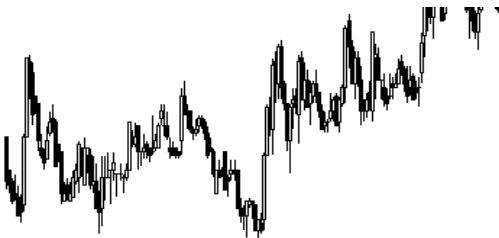
LSIP – Buy on Weakness

Jumat kemarin (1/8), LSIP ditutup terkoreksi 0,4% ke level 1,125. Selama LSIP tidak terkoreksi ke bawah 1,095, maka posisi LSIP saat ini kami perkirakan berada pada awal wave [iii] dari wave C. Hal ini berarti, LSIP berpotensi berbalik menguat.

Buy on Weakness: 1,100-1,125

Target Price: 1,200, 1,310


Stoploss: below 1,095





PT MNC SEKURITAS

MNC Financial Center Lt. 14 – 16
Jl. Kebon Sirih No. 21 - 27, Jakarta Pusat 10340
Telp : (021) 2980 3111
Fax : (021) 3983 6899

Disclaimer : MNCS Daily Scope Wave has been issued by PT MNC Sekuritas, It may not be reproduced or further distributed or published, in whole or in part, for any purpose. PT MNC Sekuritas has based this document on information obtained from sources it believes to be reliable but which it has not independently verified; PT MNC Sekuritas makes no guarantee, representation or warranty and accepts no responsibility to liability as to its accuracy or completeness. Expression of opinion herein are those of the research department only and are subject to change without notice. This document is not and should not be construed as an offer or the solicitation of an offer to purchase or subscribe or sell any investment. PT MNC Sekuritas and its affiliates and/or their offices, directors and employees may own or have positions in any investment mentioned herein or any investment related thereto and may from time to time add to or dispose of any such investment. PT MNC Sekuritas and its affiliates may act as market maker or have assumed an underwriting position in the securities of companies discusses herein (or investment related thereto) and may sell them to or buy them from customers on a principal basis and may also perform or seek to perform investment banking or underwriting services for or relating to those companies.

 www.mncsekuritas.id

 @mncsekuritas

 1-500-899

 MNC Sekuritas

 research@mncsekuritas.id

 MNC Sekuritas