



Daily SCOPE

Wave

MNC Financial Center Lt. 14 – 16

Jl. Kebon Sirih No. 21 – 27, Jakarta 10340, Indonesia

www.mncsekuritas.id

a member of MNC Group

Institution Research Team | herditya.wicaksana@mncgroup.com | +6221 29080 3111 Ext.52150

2 April 2019

Jakarta Composite Index (JCI) *short term (1-2 days) bearish*

Kemarin (1/4) IHSG ditutup melemah tipis sebesar 16 poin, kami memperkirakan apabila IHSG belum sanggup untuk menembus 6,525 maka IHSG masih dapat terkoreksi pada area 6,430-6,410.

Top picks of the Day :

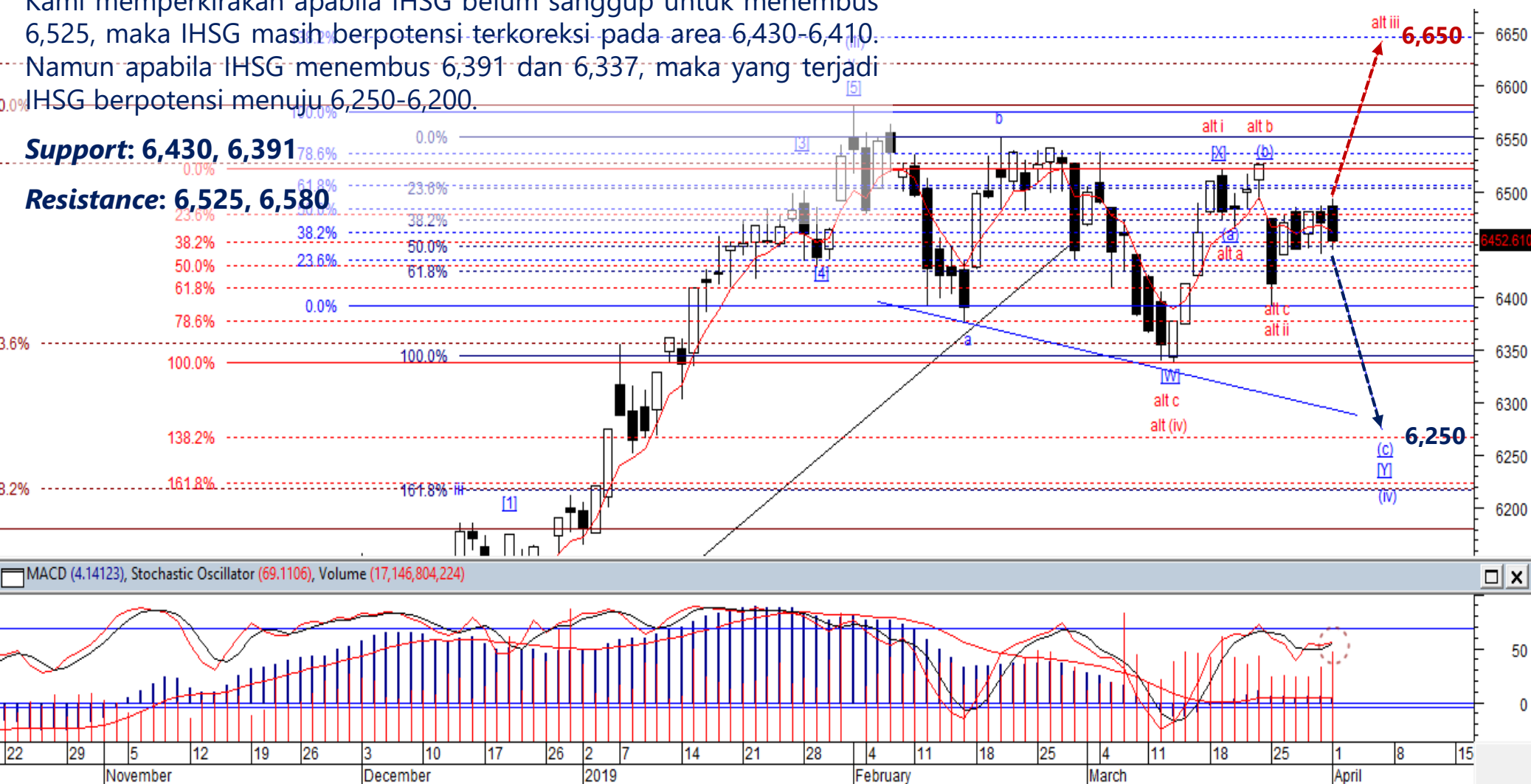
Stock	Close Price	Recommendation	Tactical Moves
ANTM	940	Buy on Weakness	ANTM sedang membentuk wave [i] dari wave 5 ke level 980. Perhatikan bahwa ANTM memiliki gap pada level 945-950 dan 1,025-1,040.
RALS	1,800	Buy on Weakness	Posisi RALS saat ini sedang membentuk wave [iii] dari wave 5, dimana target wave [iii] berada pada level 1,930.
WOOD	825	Sell on Strength	Diperkirakan WOOD sudah berada pada akhir wave (c) dari wave [iv], dan WOOD berpotensi untuk menguat untuk membentuk wave [v] dari wave 5 ke level 1,040.
CTRA	1,085	Sell on Strength	Diperkirakan CTRA berada pada akhir wave (i) dari wave C dan berpotensi terkoreksi mebuat wave (ii) ke level 1,030.

JCI – Sideways?

IHSG ditutup melemah tipis 16 poin sekaligus menutup gap yang ada. Kami memperkirakan apabila IHSG belum sanggup untuk menembus 6,525, maka IHSG masih berpotensi terkoreksi pada area 6,430-6,410. Namun apabila IHSG menembus 6,391 dan 6,337, maka yang terjadi IHSG berpotensi menuju 6,250-6,200.

Support: 6,430, 6,391

Resistance: 6,525, 6,580



ANTM – Buy on Weakness

ANTM ditutup pada level 940 pada perdagangan kemarin (1/4). Kami memperkirakan bahwa ANTM sedang membentuk wave [i] dari wave 5 ke level 980. Perhatikan bahwa ANTM memiliki gap pada level 945-950 dan 1,025-1,040.

Buy on Weakness: 910-930

Target Price: 950, 980, 1,000

Stoploss: below 870



RALS – Buy on Weakness

RALS ditutup menguat 1.1% kemarin. Kami perkirakan posisi RALS saat ini sedang membentuk wave [iii] dari wave 5, dimana target wave [iii] berada pada level 1,930.

Buy on Weakness: 1,750-1,780

Target Price: 1,820, 1,875, 1,930

Stoploss: 1,640



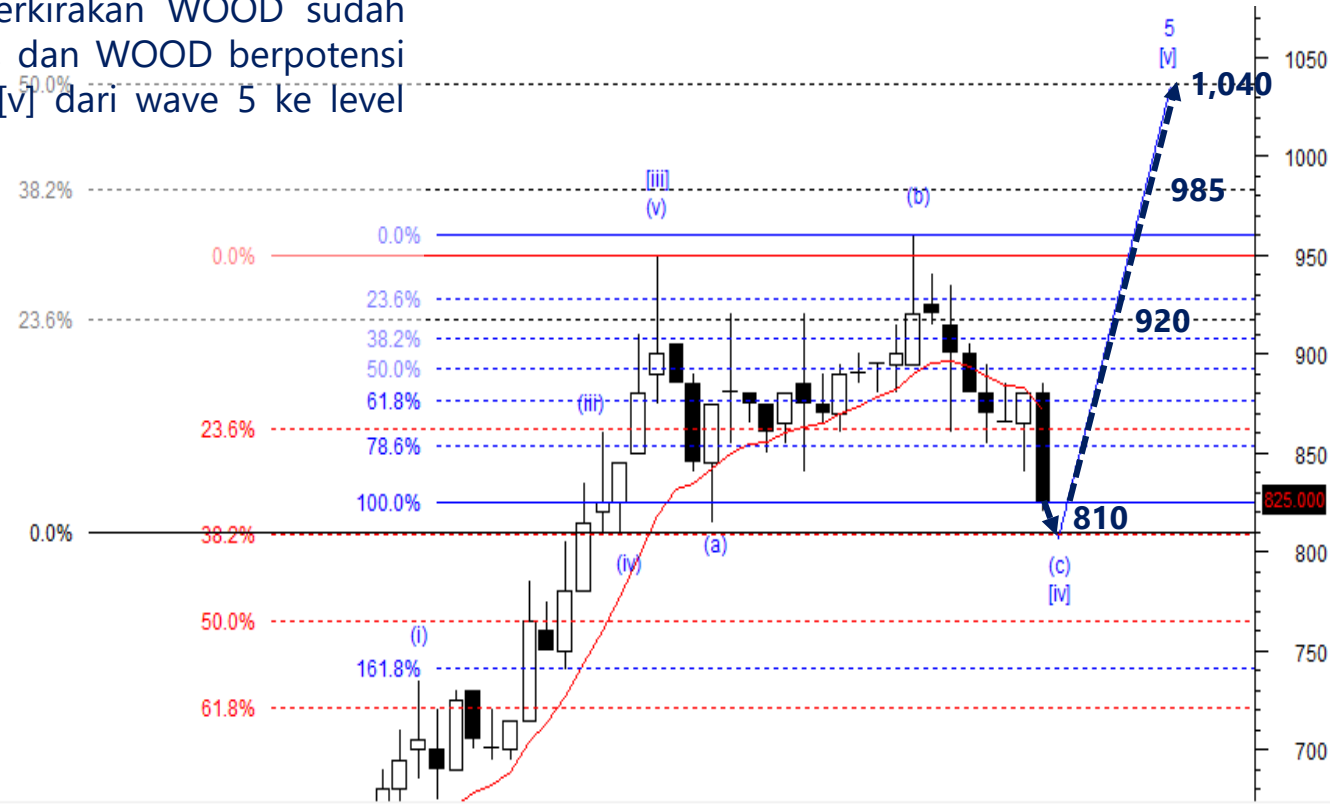
WOOD – Buy on Weakness

Pada perdagangan kemarin (1/4) WOOD terkoreksi secara agresif sebesar 6.2% ke level 825. Kami memperkirakan WOOD sudah berada pada akhir wave (c) dari wave [iv], dan WOOD berpotensi untuk menguat untuk membentuk wave [v] dari wave 5 ke level 1,040.

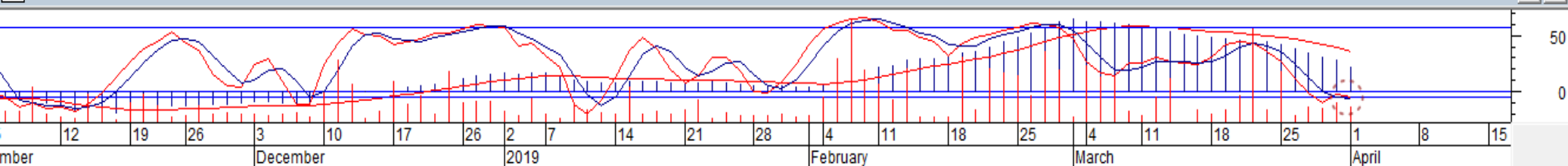
Buy on Weakness: 810-825

Target Price: 920, 985, 1,040

Stoploss: below 780



MACD (22.5866), Stochastic Oscillator (20.7547), Volume (18,486,100)



CTRA – Sell On Strength

CTRA ditutup menguat secara agresif pada level 1,085 sebesar 8.5%. Kami memperkirakan CTRA berada pada akhir wave (i) dari wave C dan berpotensi terkoreksi membentuk wave (ii) ke level 1,030.

Sell on Strength: 1,085-1,130





Thendra Crisnanda – Head of Institution Research
thendra.crisnanda@mncgroup.com
 Investment Strategy
 Ext. 52162



Victoria Venny – Research Analyst
victoria.nawang@mncgroup.com
 Telco, Toll Road, Logistic, Consumer, Poultry
 Ext. 52236



Rr. Nurulita Harwaningrum – Research Analyst
roro.harwaningrum@mncgroup.com
 Banking, Auto, Plantation
 Ext. 52237



Muhamad Rudy Setiawan – Research Associate
muhamad.setiawan@mncgroup.com
 Construction, Property
 Ext. 52317



T. Herditya Wicaksana – Technical Analyst
herditya.wicaksana@mncgroup.com
 Technical Specialist – Elliott Wave
 Ext. 52150



Krestanti Nugrahane Widhi – Research Associate
krestanti.widhi@mncgroup.com
 Plantation, Consumer
 Ext. 52166

Disclaimer : MNCS Daily Scope Wave has been issued by PT MNC Sekuritas, It may not be reproduced or further distributed or published, in whole or in part, for any purpose. PT MNC Sekuritas has based this document on information obtained from sources it believes to be reliable but which it has not independently verified; PT MNC Sekuritas makes no guarantee, representation or warranty and accepts no responsibility to liability as to its accuracy or completeness. Expression of opinion herein are those of the research department only and are subject to change without notice. This document is not and should not be construed as an offer or the solicitation of an offer to purchase or subscribe or sell any investment. PT MNC Sekuritas and its affiliates and/or their offices, directors and employees may own or have positions in any investment mentioned herein or any investment related thereto and may from time to time add to or dispose of any such investment. PT MNC Sekuritas and its affiliates may act as market maker or have assumed an underwriting position in the securities of companies discusses herein (or investment related thereto) and may sell them to or buy them from customers on a principal basis and may also perform or seek to perform investment banking or underwriting services for or relating to those companies.