



Daily SCOPE

Wave

MNC Financial Center Lt. 14 – 16

Jl. Kebon Sirih No. 21 – 27, Jakarta 10340, Indonesia

www.mncsekuritas.id

a member of MNC Group

Institution Research Team | herditya.wicaksana@mncgroup.com | +6221 29080 3111 Ext.52150

29 April 2019

Jakarta Composite Index (JCI) short term (1-2 days) bullish

IHSG menembus level support 6,337 dan mengubah skenario jangka pendeknya. Kami memperkirakan IHSG akan menguat sejenak, namun apabila koreksi IHSG kembali ke level 6,321 maka IHSG berpotensi menuju 6,200. Sebaliknya apabila IHSG terkoreksi namun tetap di atas 6,321 maka kami perkirakan IHSG akan membentuk wave (v) dari wave [iii].

Top picks of the Day :

Stock	Close Price	Recommendation	Tactical Moves
WIKA	2,350	Buy on Weakness	Posisi WIKA saat ini sudah berada pada akhir wave (iv) dari wave [iii]. WIKA berpotensi menguat untuk membentuk wave (v) dari wave [iii] menuju level 2,530.
UNVR	45,500	Buy on Weakness	UNVR sudah berada pada akhir wave (iii) dari wave [c] dari wave B, dalam jangka pendek UNVR dapat menguat untuk membentuk wave (iv) menuju area 47,350-47,500.
ASII	7,650	Buy on Weakness	Saat ini ASII sedang berada pada awal wave [iii] dari wave C, dengan target penguatan berada pada area 8,400.
KLBF	1,515	Sell on Strength	Penguatan kemarin (26/4) merupakan bagian dari wave [iii] dari wave (C), dimana target koreksi wave [iii] berada pada level 1,415.

JCI – Test Resistance

Walaupun ditutup pada level 6,401 atau naik sebesar 0.5%, IHSG sempat menembus support dan menyentuh level terendahnya di 6,321 dan mengubah skenario pendeknya. IHSG kami perkirakan berpotensi menguat ke area 6,480-6,516.

Apabila IHSG mampu terus menguat dan menembus level 6,525 serta tidak kembali turun ke bawah 6,321, maka kami perkirakan IHSG akan membentuk wave (v) dari wave [iii].

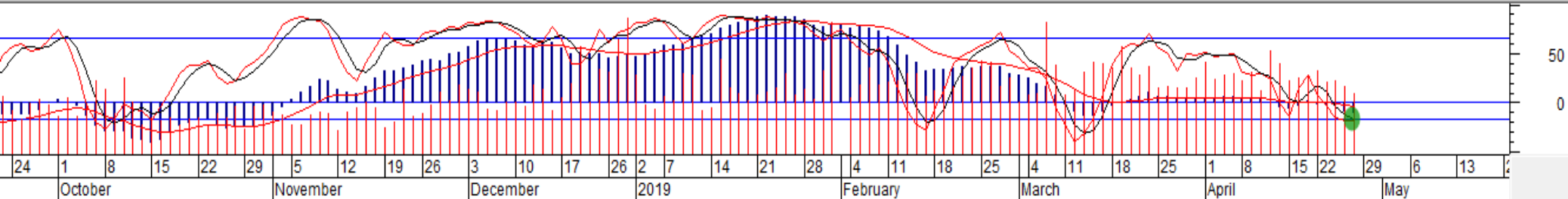
Sebaliknya, bila IHSG terkoreksi dan turun menembus 6,321, maka IHSG berpotensi menuju level 6,240-6,200 (berwarna merah).

Support: 6,330, 6,260

Resistance: 6,480, 6,525



MACD (-9.98805), Stochastic Oscillator (18.5097), Volume (12,350,597,120)



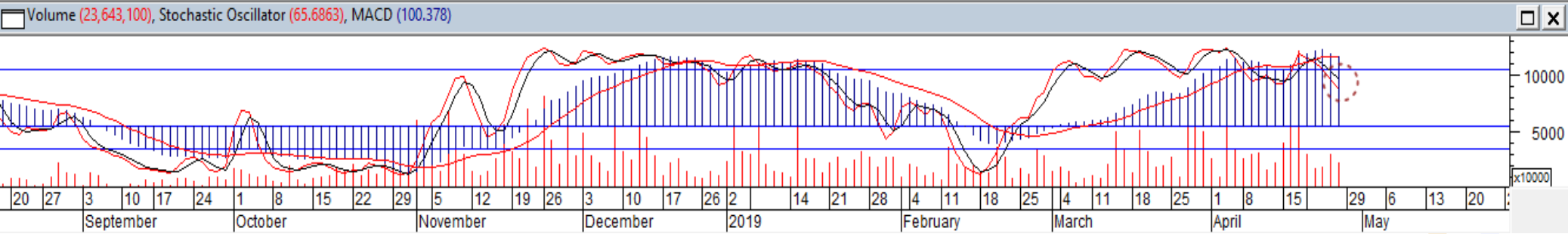
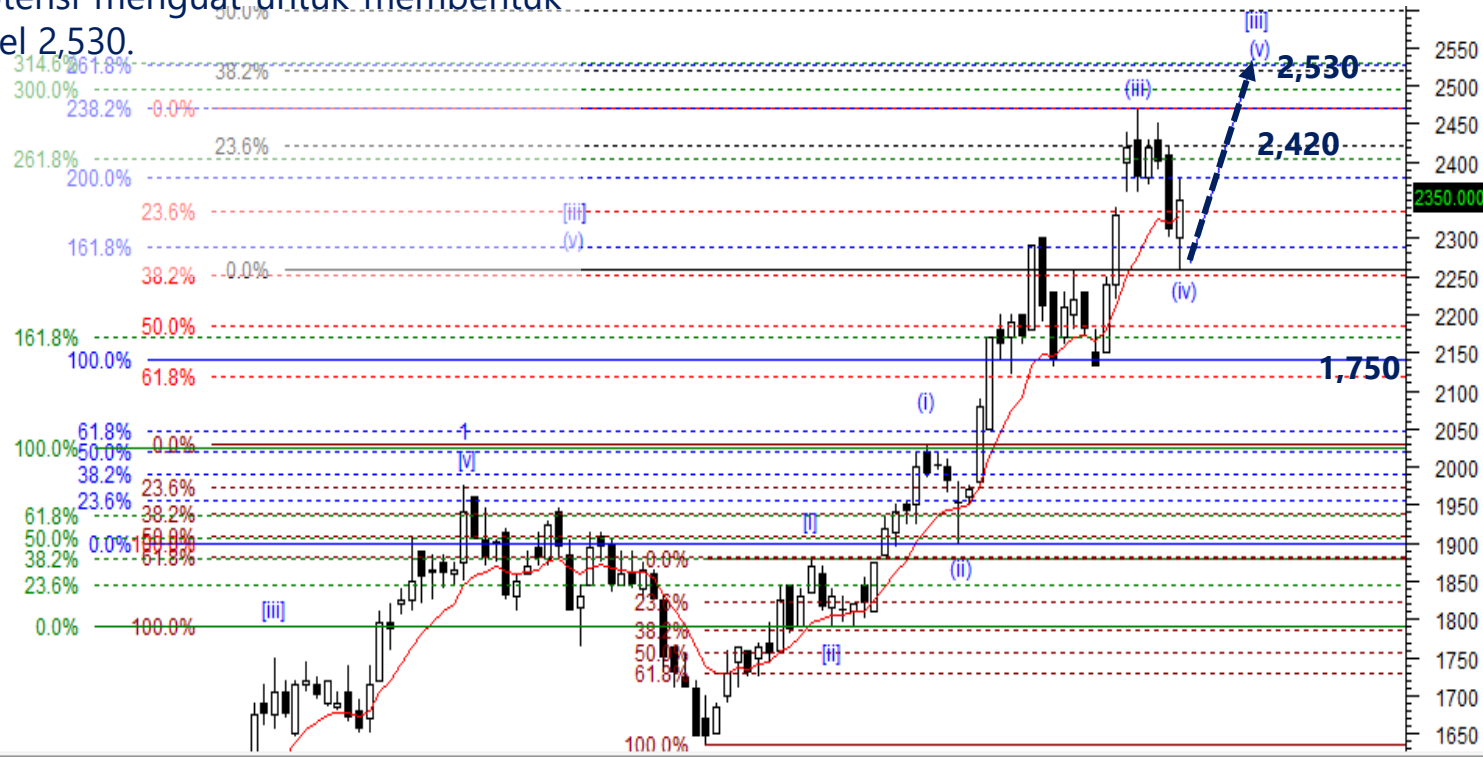
WIKA – Buy on Weakness

Posisi WIKA saat ini sudah berada pada akhir wave (iv) dari wave [iii]. Kami perkirakan WIKA berpotensi menguat untuk membentuk wave (v) dari wave [iii] menuju level 2,530.

Buy on Weakness: 2,300-2,340

Target Price: 2,420, 2,530

Stoploss: below 2,200



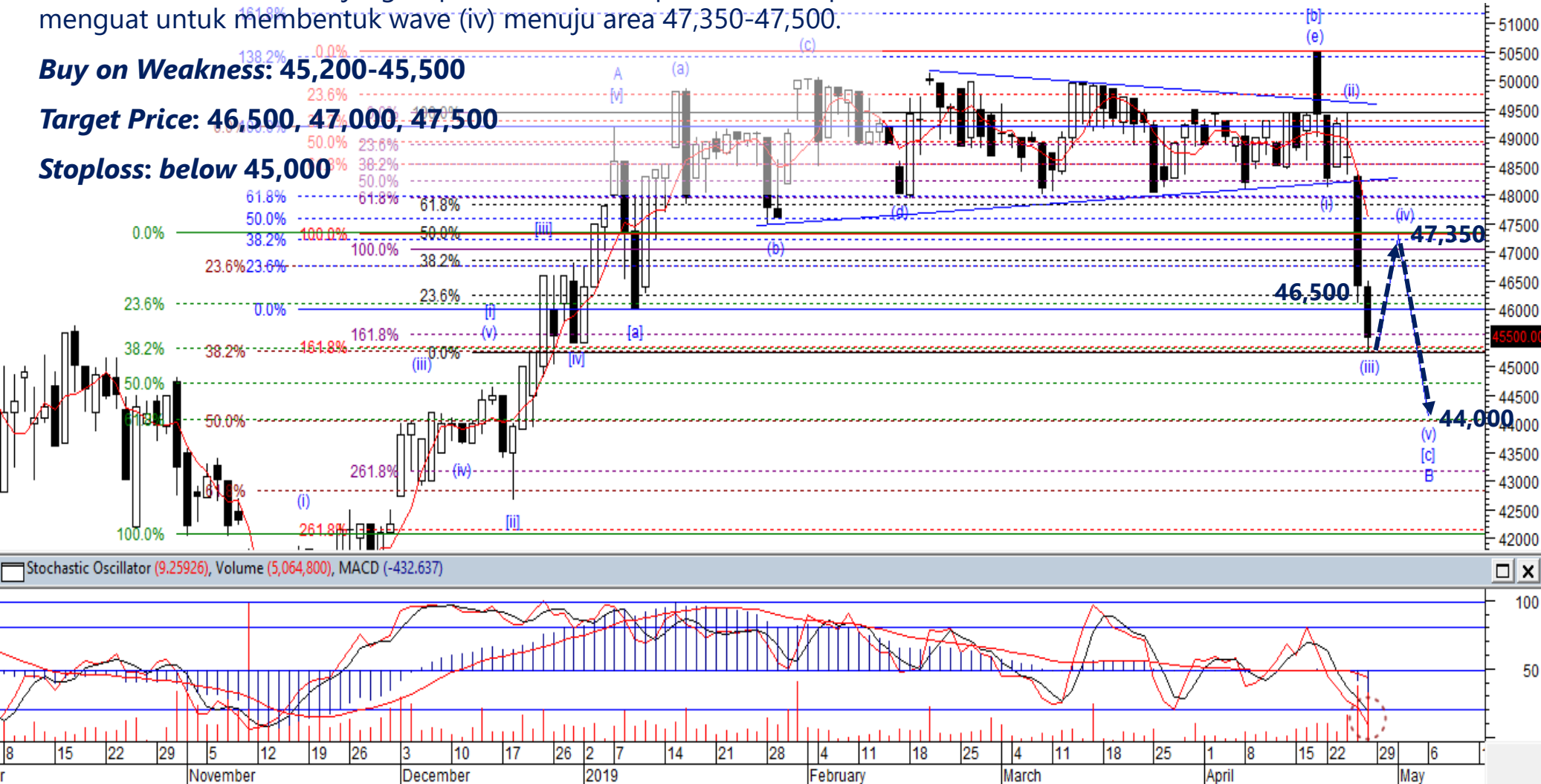
UNVR – Buy on Weakness

UNVR kami perkirakan sudah berada pada akhir wave (iii) dari wave [c] dari wave B, dalam jangka pendek UNVR diperkirakan dapat menguat untuk membentuk wave (iv) menuju area 47,350-47,500.

Buy on Weakness: 45,200-45,500

Target Price: 46,500, 47,000, 47,500

Stoploss: below 45,000



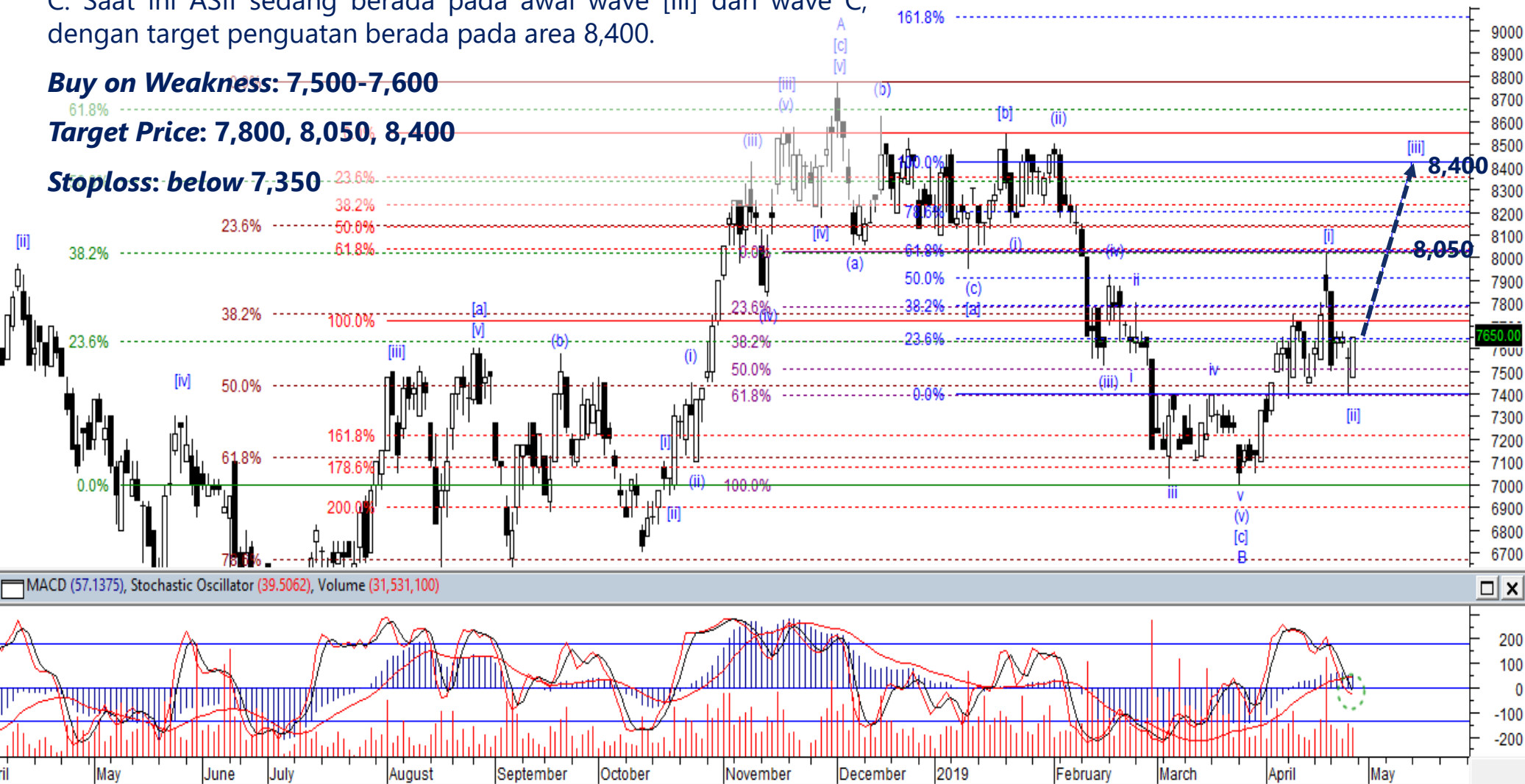
ASII – Buy on Weakness

Kami memperkirakan ASII sudah menyelesaikan wave [ii] dari wave C. Saat ini ASII sedang berada pada awal wave [iii] dari wave C, dengan target penguatan berada pada area 8,400.

Buy on Weakness: 7,500-7,600

Target Price: 7,800, 8,050, 8,400

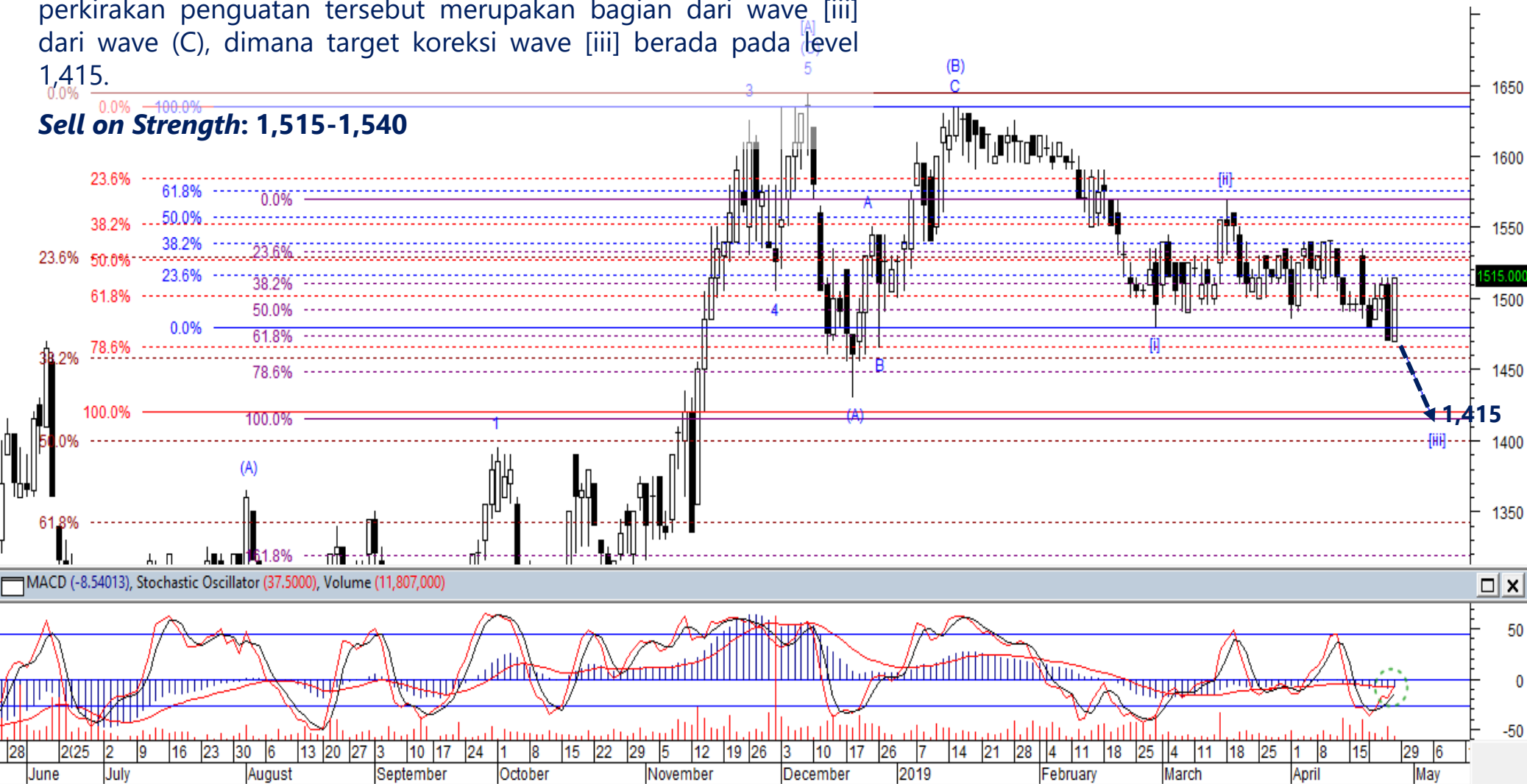
Stoploss: below 7,350



KLBF – Sell On Strength

Pekan lalu KLBF ditutup menguat 3.1% di level 1,515. Kami perkirakan penguatan tersebut merupakan bagian dari wave [iii] dari wave (C), dimana target koreksi wave [iii] berada pada level 1,415.

Sell on Strength: 1,515-1,540





Thendra Crisnanda – Head of Institution Research
thendra.crisnanda@mncgroup.com
 Investment Strategy
 Ext. 52162



Victoria Venny – Research Analyst
victoria.nawang@mncgroup.com
 Telco, Toll Road, Logistic, Consumer, Poultry
 Ext. 52236



Rr. Nurulita Harwaningrum – Research Analyst
roro.harwaningrum@mncgroup.com
 Banking, Auto, Plantation
 Ext. 52237



Muhamad Rudy Setiawan – Research Associate
muhamad.setiawan@mncgroup.com
 Construction, Property
 Ext. 52317



T. Herditya Wicaksana – Technical Analyst
herditya.wicaksana@mncgroup.com
 Technical Specialist – Elliott Wave
 Ext. 52150



Krestanti Nugrahane Widhi – Research Associate
krestanti.widhi@mncgroup.com
 Plantation, Consumer
 Ext. 52166

Disclaimer : MNCS Daily Scope Wave has been issued by PT MNC Sekuritas, It may not be reproduced or further distributed or published, in whole or in part, for any purpose. PT MNC Sekuritas has based this document on information obtained from sources it believes to be reliable but which it has not independently verified; PT MNC Sekuritas makes no guarantee, representation or warranty and accepts no responsibility to liability as to its accuracy or completeness. Expression of opinion herein are those of the research department only and are subject to change without notice. This document is not and should not be construed as an offer or the solicitation of an offer to purchase or subscribe or sell any investment. PT MNC Sekuritas and its affiliates and/or their offices, directors and employees may own or have positions in any investment mentioned herein or any investment related thereto and may from time to time add to or dispose of any such investment. PT MNC Sekuritas and its affiliates may act as market maker or have assumed an underwriting position in the securities of companies discusses herein (or investment related thereto) and may sell them to or buy them from customers on a principal basis and may also perform or seek to perform investment banking or underwriting services for or relating to those companies.