



Daily SCOPE

Wave

MNC Financial Center Lt. 14 – 16

Jl. Kebon Sirih No. 21 – 27, Jakarta 10340, Indonesia

www.mncsekuritas.id

a member of MNC Group

6 Desember 2019

Institution Research Team | herditya.wicaksana@mncgroup.com | +6221 29080 3111 Ext.52150

Jakarta Composite Index (JCI) *short term (1-2 days) bearish*

Perhatikan level 6,168 sebagai resistance terdekat IHSG, apabila IHSG belum mampu menembus level tersebut, maka IHSG masih cenderung mengalami koreksi terlebih dahulu.

Top picks of the Day :

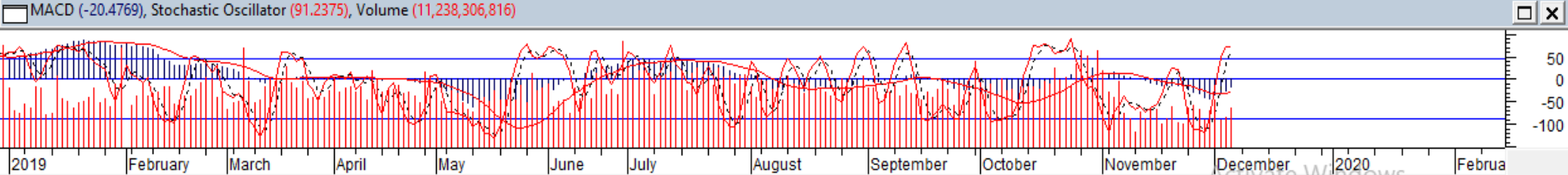
Stock	Close Price	Recommendation	Tactical Moves
ERAA	1,490	Buy on Weakness	Posisi ERAA saat ini sedang berada di wave [iv] dari wave C dari wave (B), dimana ERAA akan bergerak menguat dalam jangka pendek.
PTBA	2,560	Buy on Weakness	Posisi PTBA sedang berada di awal wave c dari wave (iii) dari wave [c], PTBA akan melanjutkan penguatannya untuk membentuk wave c dari wave (iii).
BBRI	3,630	Buy on Weakness	BBRI sedang berada pada awal dari wave [iii] dari wave 5, dimana BBRI akan melanjutkan penguatannya.
JSMR	5,200	Sell on Strength	JSMR saat ini sudah berada pada akhir wave [a] dari wave [b], dimana JSMR rentan dan berpotensi terkoreksi untuk membentuk wave [b].

JCI – Pullback



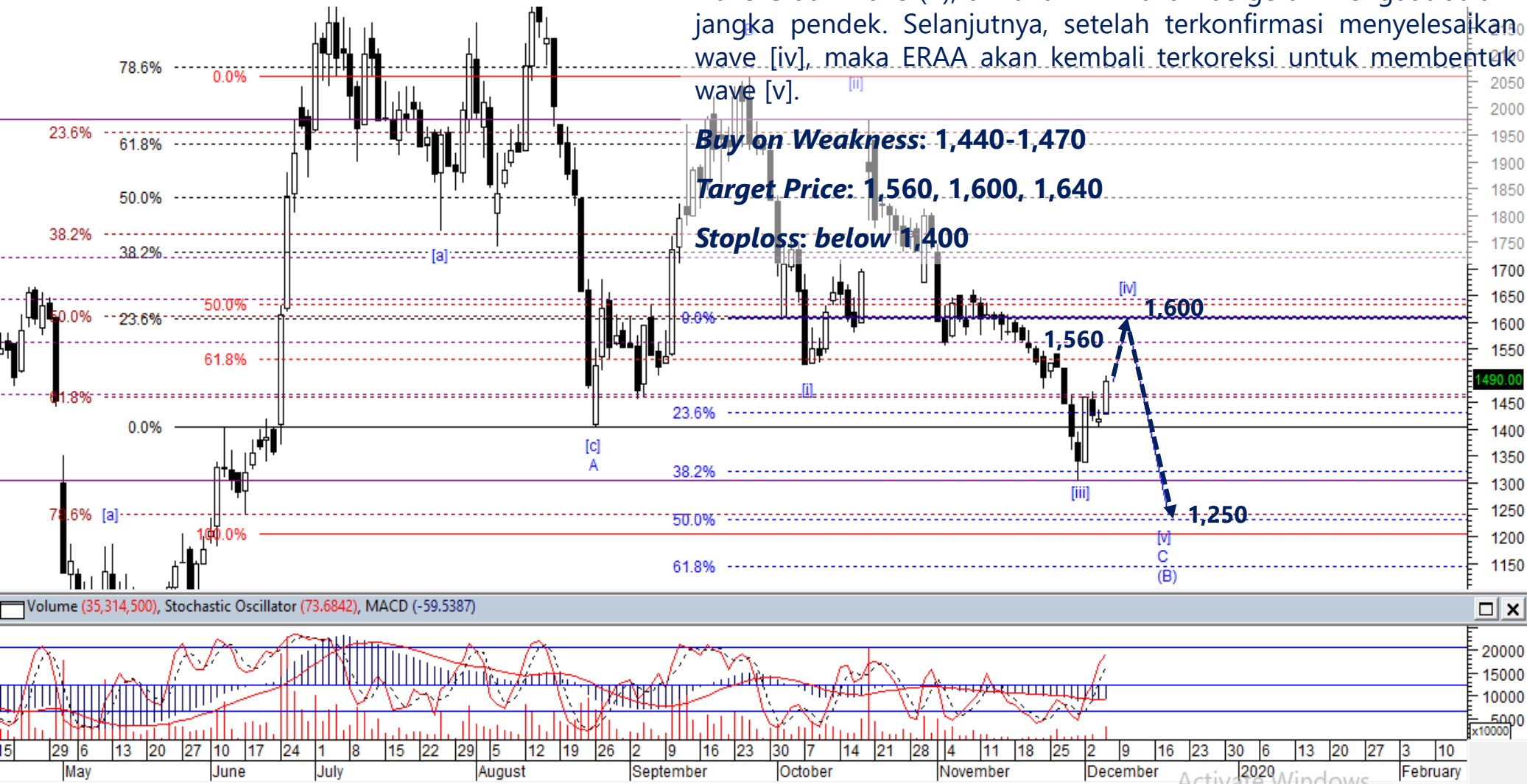
IHSG kemarin (5/12), ditutup menguat 0,64% ke area 6,152. Selama belum dapat menembus resistance terdekat di 6,168, maka kami memperkirakan IHSG sudah berada pada akhir wave (b) atau wave alt [i] pada skenario alternatif. Saat ini, IHSG rawan untuk terkoreksi ke area terdekat 6,020-6,050 untuk membentuk wave alt [ii].

Support: 6,100, 6,000
Resistance: 6,168, 6,200

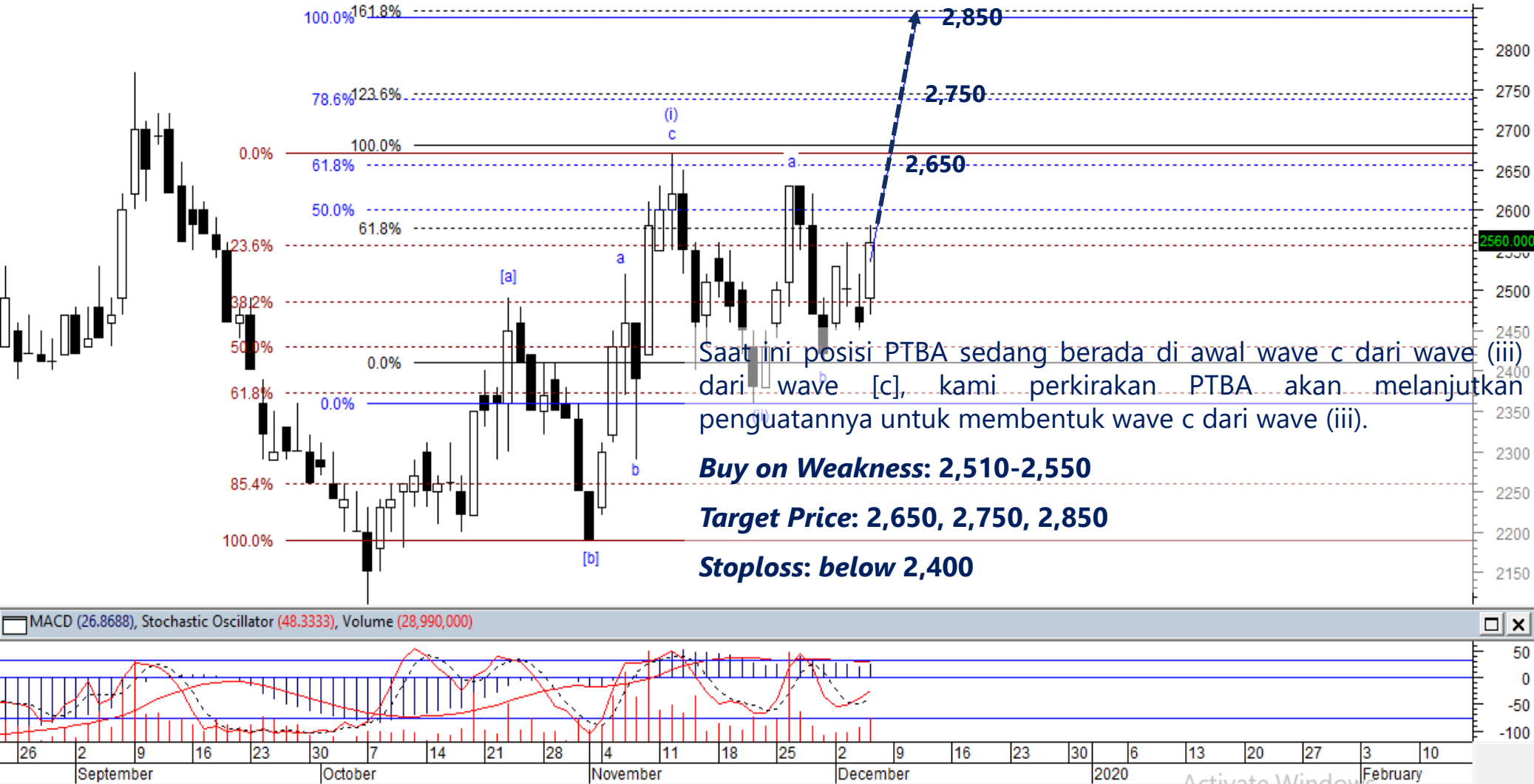


ERAA – Buy on Weakness

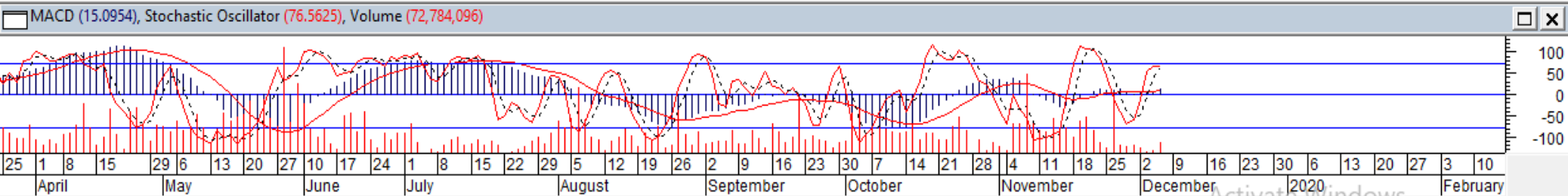
Posisi ERAA saat ini kami perkirakan sedang berada di wave [iv] dari wave C dari wave (B), dimana ERAA akan bergerak menguat dalam jangka pendek. Selanjutnya, setelah terkonfirmasi menyelesaikan wave [iv], maka ERAA akan kembali terkoreksi untuk membentuk wave [v].



PTBA – Buy on Weakness

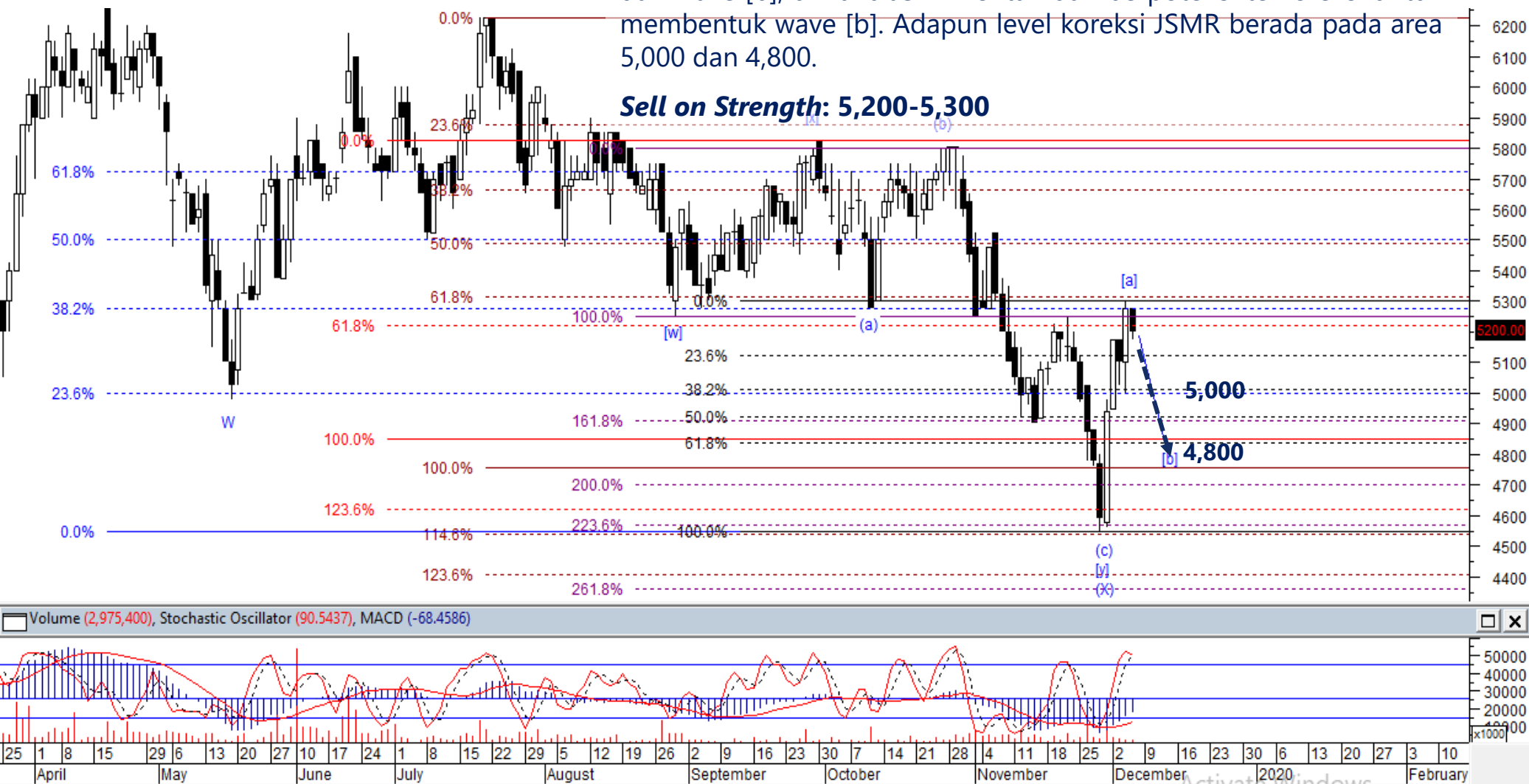


BBRI – Buy on Weakness



JSMR – Sell On Strength

Kami perkirakan JSMR saat ini sudah berada pada akhir wave [a] dari wave [b], dimana JSMR rentan dan berpotensi terkoreksi untuk membentuk wave [b]. Adapun level koreksi JSMR berada pada area 5,000 dan 4,800.



Activate Windows



Thendra Crisnanda – Head of Institution Research
thendra.crisnanda@mncgroup.com
 Investment Strategy
 Ext. 52162



Victoria Venny – Research Analyst
victoria.nawang@mncgroup.com
 Telco, Toll Road, Logistic, Consumer, Poultry
 Ext. 52236



T. Herditya Wicaksana – Technical Analyst
herditya.wicaksana@mncgroup.com
 Technical Specialist – Elliott Wave
 Ext. 52150



Muhamad Rudy Setiawan – Research Analyst
muhamad.setiawan@mncgroup.com
 Construction, Property, Oil and Gas
 Ext. 52317



Catherina Vincentia – Research Associate
catherina.vincentia@mncgroup.com
 Ext. 52306



Jessica Sukimaja – Research Associate
jessica.sukimaja@mncgroup.com
 Ext. 52307

Disclaimer : MNCS Daily Scope Wave has been issued by PT MNC Sekuritas, It may not be reproduced or further distributed or published, in whole or in part, for any purpose. PT MNC Sekuritas has based this document on information obtained from sources it believes to be reliable but which it has not independently verified; PT MNC Sekuritas makes no guarantee, representation or warranty and accepts no responsibility to liability as to its accuracy or completeness. Expression of opinion herein are those of the research department only and are subject to change without notice. This document is not and should not be construed as an offer or the solicitation of an offer to purchase or subscribe or sell any investment. PT MNC Sekuritas and its affiliates and/or their offices, directors and employees may own or have positions in any investment mentioned herein or any investment related thereto and may from time to time add to or dispose of any such investment. PT MNC Sekuritas and its affiliates may act as market maker or have assumed an underwriting position in the securities of companies discusses herein (or investment related thereto) and may sell them to or buy them from customers on a principal basis and may also perform or seek to perform investment banking or underwriting services for or relating to those companies.