



Daily SCOPE Wave

MNC Financial Center Lt. 14 – 16

Jl. Kebon Sirih No. 21 – 27, Jakarta 10340, Indonesia

www.mncsekuritas.id

a member of MNC Group

10 Desember 2019

Institution Research Team | herditya.wicaksana@mncgroup.com | +6221 29080 3111 Ext.52150

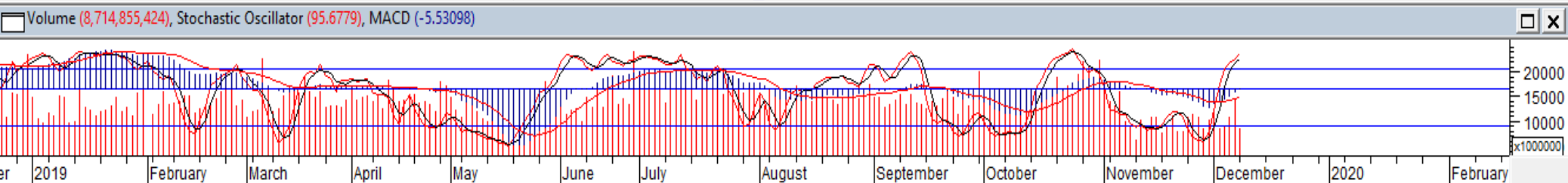
Jakarta Composite Index (JCI) *short term (1-2 days) bearish*

Kemarin (9/12), IHSG ditutup menguat tipis dengan volume pembelian yang lebih kecil dibandingkan pekan lalu. Kami perkirakan IHSG akan berbalik arah terlebih dahulu.

Top picks of the Day :

Stock	Close Price	Recommendation	Tactical Moves
BBNI	7,575	Buy on Weakness	Saat ini BBNI telah mengkonfirmasi wave [ii] dari wave C dan sedang berada pada awal wave [iii] dari wave C.
MAPI	1,065	Buy on Weakness	Posisi MAPI saat ini sedang berada pada wave ii dari wave (c) dari wave [v], dimana selama tidak terkoreksi menembus level 1,010 maka MAPI masih berpotensi untuk menguat.
BSDE	1,280	Buy on Weakness	BSDE sudah terkonfirmasi wave [y] dari (B), yang berarti saat ini BSDE berpotensi untuk melanjutkan penguatannya untuk membentuk wave (C) dari [Y].
PGAS	2,140	Sell on Strength	Posisi PGAS saat ini sudah berada pada akhir wave (c) dari wave [b] dan rentan terkoreksi kembali untuk membentuk wave [c] dari wave X.

JCI – Pullback



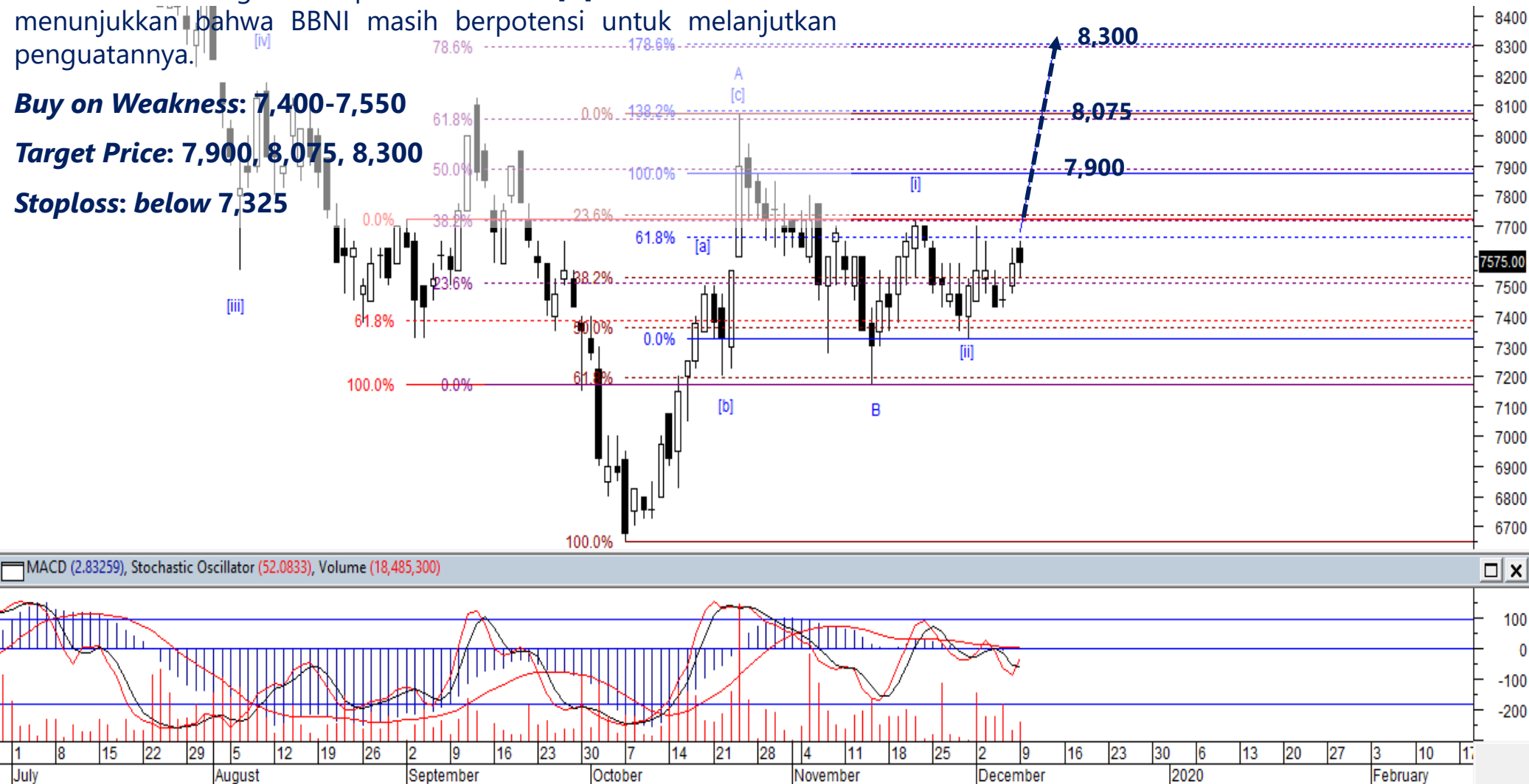
BBNI – Buy on Weakness

Saat ini kami perkirakan BBNI telah mengkonfirmasi wave [ii] dari wave C dan sedang berada pada awal wave [iii] dari wave C. Hal ini menunjukkan bahwa BBNI masih berpotensi untuk melanjutkan penguatannya.

Buy on Weakness: 7,400-7,550

Target Price: 7,900, 8,075, 8,300

Stoploss: below 7,325



MAPI – Buy on Weakness

Posisi MAPI saat ini sedang berada pada wave ii dari wave (c) dari wave [v], dimana selama tidak terkoreksi menembus level 1,010 maka MAPI masih berpotensi untuk menguat.

Buy on Weakness: 1,030-1,060

Target Price: 1,115, 1,150, 1,200

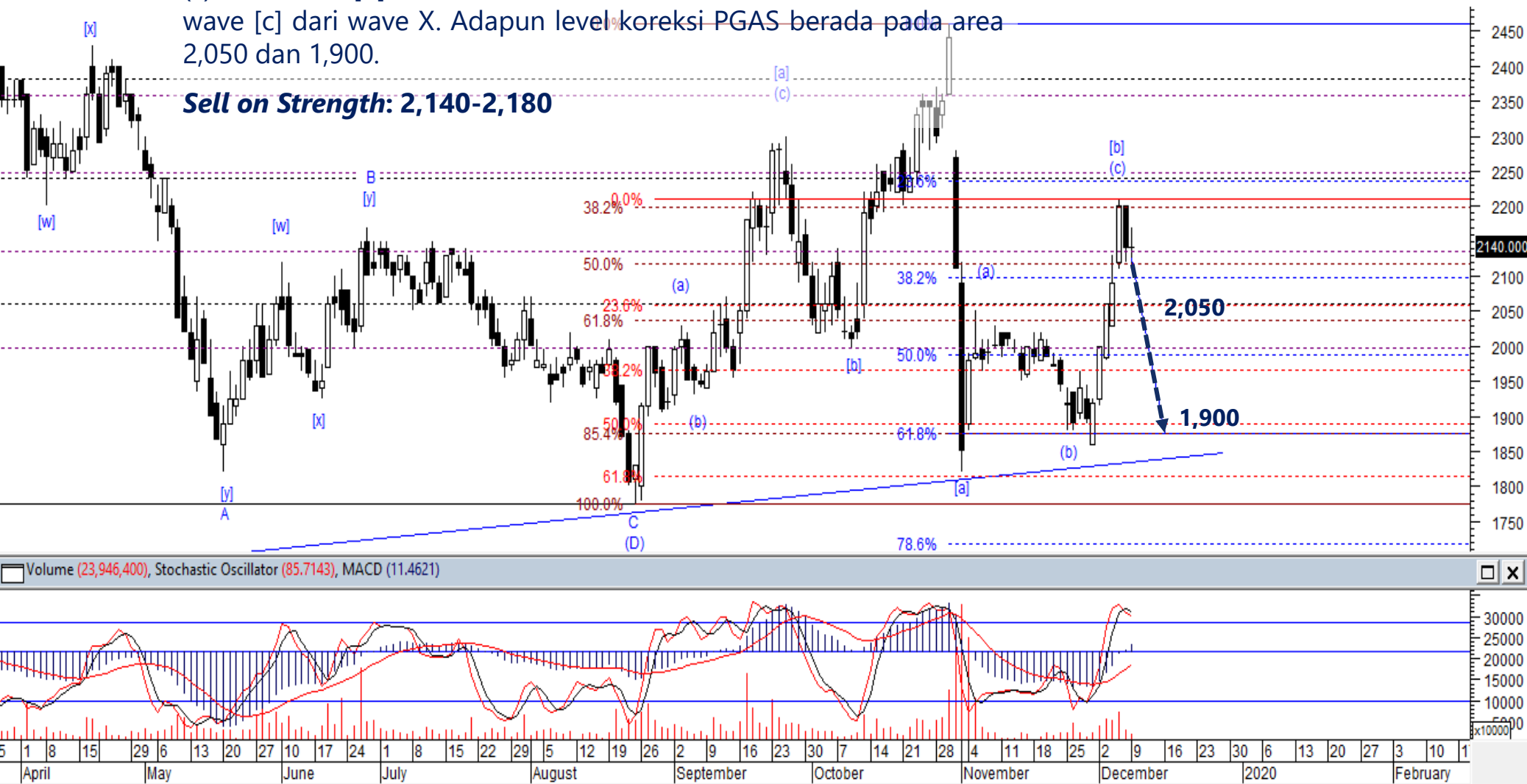
Stoploss: below 1,005



PGAS – Sell On Strength

Posisi PGAS saat ini kami perkirakan sudah berada pada akhir wave (c) dari wave [b] dan rentan terkoreksi kembali untuk membentuk wave [c] dari wave X. Adapun level koreksi PGAS berada pada area 2,050 dan 1,900.

Sell on Strength: 2,140-2,180



Volume (23,946,400), Stochastic Oscillator (85.7143), MACD (11.4621)



Thendra Crisnanda – Head of Institution Research
thendra.crisnanda@mncgroup.com
 Investment Strategy
 Ext. 52162



Victoria Venny – Research Analyst
victoria.nawang@mncgroup.com
 Telco, Toll Road, Logistic, Consumer, Poultry
 Ext. 52236



T. Herditya Wicaksana – Technical Analyst
herditya.wicaksana@mncgroup.com
 Technical Specialist – Elliott Wave
 Ext. 52150



Muhamad Rudy Setiawan – Research Analyst
muhamad.setiawan@mncgroup.com
 Construction, Property, Oil and Gas
 Ext. 52317



Catherina Vincentia – Research Associate
catherina.vincentia@mncgroup.com
 Ext. 52306



Jessica Sukimaja – Research Associate
jessica.sukimaja@mncgroup.com
 Ext. 52307

Disclaimer : MNCS Daily Scope Wave has been issued by PT MNC Sekuritas, It may not be reproduced or further distributed or published, in whole or in part, for any purpose. PT MNC Sekuritas has based this document on information obtained from sources it believes to be reliable but which it has not independently verified; PT MNC Sekuritas makes no guarantee, representation or warranty and accepts no responsibility to liability as to its accuracy or completeness. Expression of opinion herein are those of the research department only and are subject to change without notice. This document is not and should not be construed as an offer or the solicitation of an offer to purchase or subscribe or sell any investment. PT MNC Sekuritas and its affiliates and/or their offices, directors and employees may own or have positions in any investment mentioned herein or any investment related thereto and may from time to time add to or dispose of any such investment. PT MNC Sekuritas and its affiliates may act as market maker or have assumed an underwriting position in the securities of companies discusses herein (or investment related thereto) and may sell them to or buy them from customers on a principal basis and may also perform or seek to perform investment banking or underwriting services for or relating to those companies.