



# Daily SCOPE

Wave

**MNC Financial Center Lt. 14 – 16**

Jl. Kebon Sirih No. 21 – 27, Jakarta 10340, Indonesia

[www.mncsekuritas.id](http://www.mncsekuritas.id)

a member of MNC Group

**16 Desember 2019**

Institution Research Team | [herditya.wicaksana@mncgroup.com](mailto:herditya.wicaksana@mncgroup.com) | +6221 29080 3111 Ext.52150

## Jakarta Composite Index (JCI) *short term (1-2 days) bearish*

*Meskipun ditutup pada teritori positif, namun IHSG masih kami perkirakan akan terkoreksi kembali untuk membentuk wave (b) atau wave [ii], hal tersebut berlaku apabila IHSG tidak mampu menembus area 6,275.*

### Top picks of the Day :

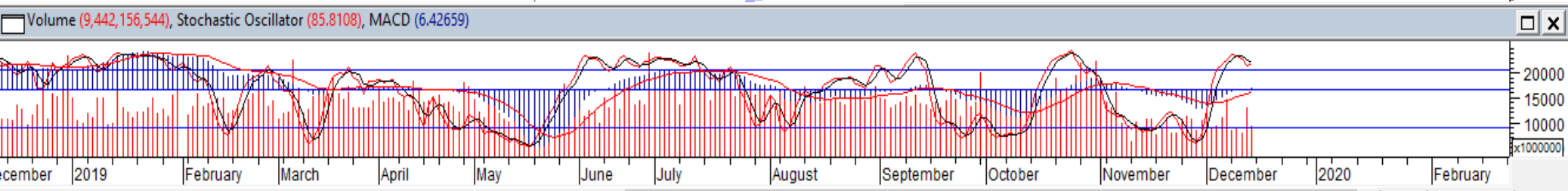
Stock	Close Price	Recommendation	Tactical Moves
BBRI	4,280	Buy on Weakness	Saat ini BBRI sedang berada pada awal wave (iii) dari wave [iii], dimana BBRI masih berpotensi untuk melanjutkan penguatannya untuk menyelesaikan wave (iii).
TLKM	3,990	Buy on Weakness	Posisi TLKM saat ini sudah terkonfirmasi menyelesaikan wave [ii] dari wave 5, sehingga selanjutnya TLKM berpotensi melanjutkan penguatannya untuk membentuk wave [iii].
KLBF	1,600	Buy on Weakness	Saat ini KLBF sedang berada pada awal wave (iii) dari wave [c], dimana KLBF berpotensi untuk melanjutkan penguatannya untuk membentuk wave (iii).
ANTM	830	Sell on Strength	ANTM sudah berada pada akhir wave (i), dimana ANTM rentan terkoreksi untuk membentuk wave (ii).

# JCI – Last Upside?



Menutup pekan lalu (13/12), IHSG berada di teritori positif 6,197 atau menguat sebesar 0,9%. Selama belum mampu menembus 6,275, maka kami memperkirakan IHSG sedang berada di wave (b) atau wave alt [ii]. Hal tersebut berarti IHSG masih rentan untuk terkoreksi ke area 6,040-6,080 untuk membentuk wave (b) atau wave alt [ii].

**Support: 6,100, 6,050**  
**Resistance: 6,220, 6,275**



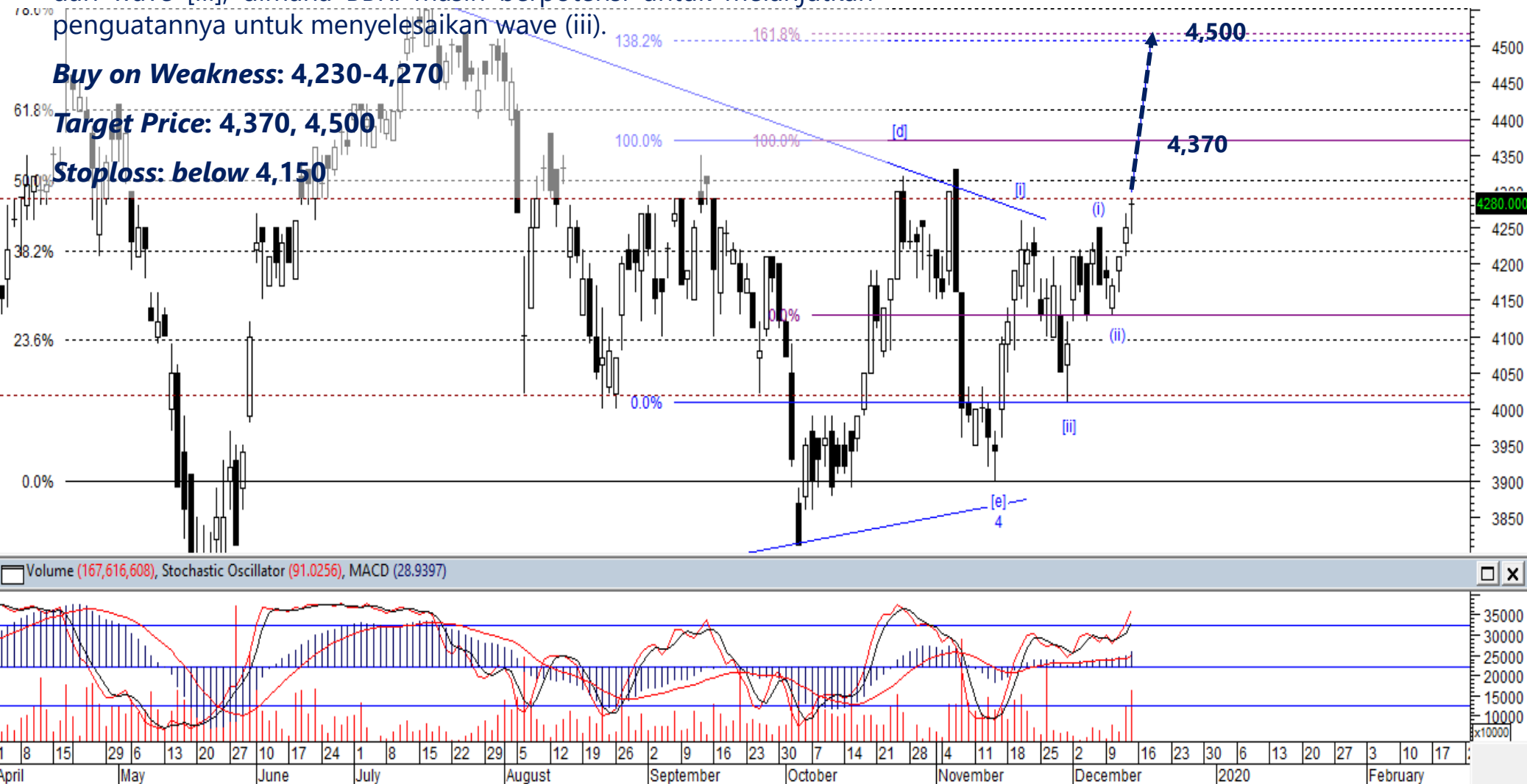
# BBRI – Buy on Weakness

Kami perkirakan saat ini BBRI sedang berada pada awal wave (iii) dari wave [iii], dimana BBRI masih berpotensi untuk melanjutkan penguatannya untuk menyelesaikan wave (iii).

**Buy on Weakness: 4,230-4,270**

**Target Price: 4,370, 4,500**

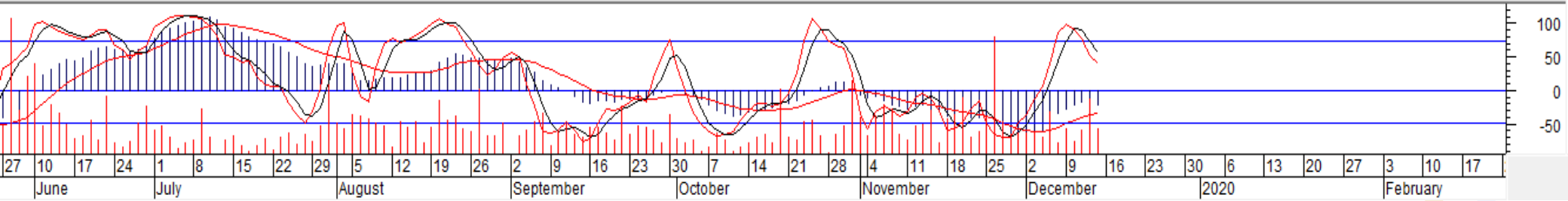
**Stoploss: below 4,150**



# TLKM – Buy on Weakness



MACD (-22.9584), Stochastic Oscillator (63.4409), Volume (81,937,296)



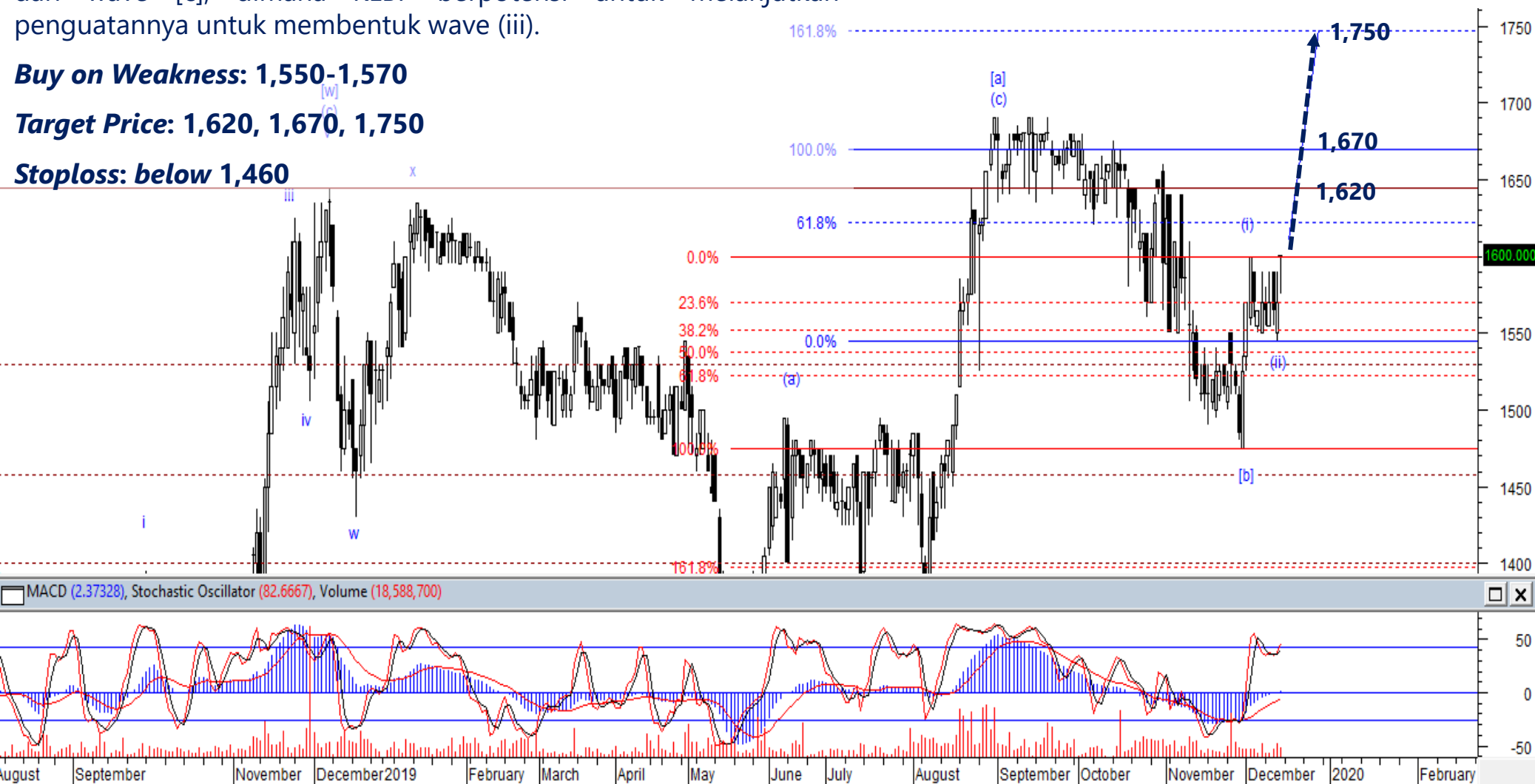
# KLBF – Buy on Weakness

Saat ini KLBF kami perkirakan sedang berada pada awal wave (iii) dari wave [c], dimana KLBF berpotensi untuk melanjutkan penguatannya untuk membentuk wave (iii).

**Buy on Weakness: 1,550-1,570**

**Target Price: 1,620, 1,670, 1,750**

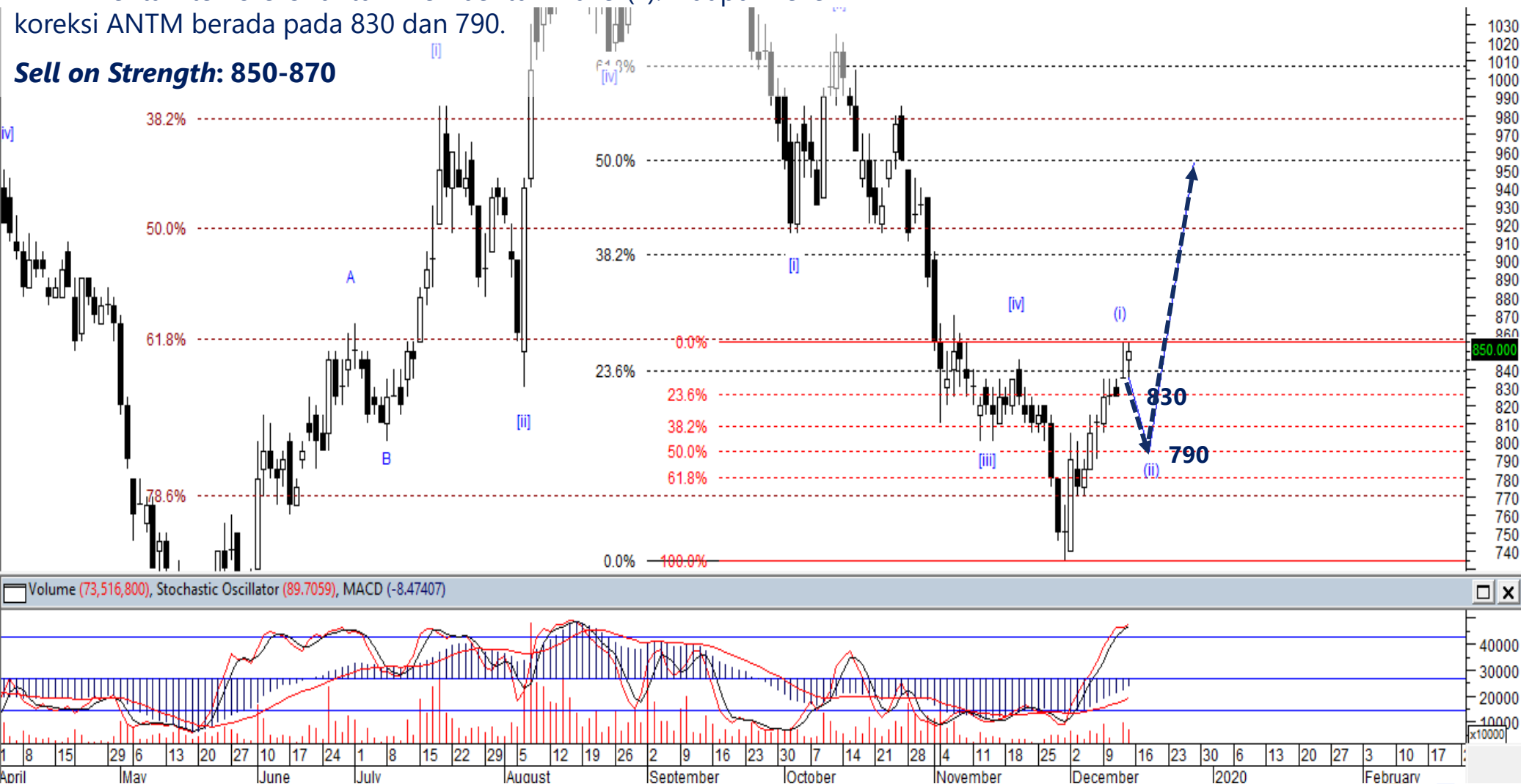
**Stoploss: below 1,460**



# ANTM – Sell On Strength

Kami perkirakan ANTM sudah berada pada akhir wave (i), dimana ANTM rentan terkoreksi untuk membentuk wave (ii). Adapun level koreksi ANTM berada pada 830 dan 790.

## Sell on Strength: 850-870





**Thendra Crisnanda – Head of Institution Research**  
[thendra.crisnanda@mncgroup.com](mailto:thendra.crisnanda@mncgroup.com)  
Investment Strategy  
Ext. 52162



**Victoria Venny – Research Analyst**  
[victoria.nawang@mncgroup.com](mailto:victoria.nawang@mncgroup.com)  
Telco, Toll Road, Logistic, Consumer, Poultry  
Ext. 52236



**T. Herditya Wicaksana – Technical Analyst**  
[herditya.wicaksana@mncgroup.com](mailto:herditya.wicaksana@mncgroup.com)  
Technical Specialist – Elliott Wave  
Ext. 52150



**Muhamad Rudy Setiawan – Research Analyst**  
[muhamad.setiawan@mncgroup.com](mailto:muhamad.setiawan@mncgroup.com)  
Construction, Property, Oil and Gas  
Ext. 52317



**Catherina Vincentia – Research Associate**  
[catherina.vincentia@mncgroup.com](mailto:catherina.vincentia@mncgroup.com)  
Ext. 52306



**Jessica Sukimaja – Research Associate**  
[jessica.sukimaja@mncgroup.com](mailto:jessica.sukimaja@mncgroup.com)  
Ext. 52307

**Disclaimer :** MNCS Daily Scope Wave has been issued by PT MNC Sekuritas, It may not be reproduced or further distributed or published, in whole or in part, for any purpose. PT MNC Sekuritas has based this document on information obtained from sources it believes to be reliable but which it has not independently verified; PT MNC Sekuritas makes no guarantee, representation or warranty and accepts no responsibility to liability as to its accuracy or completeness. Expression of opinion herein are those of the research department only and are subject to change without notice. This document is not and should not be construed as an offer or the solicitation of an offer to purchase or subscribe or sell any investment. PT MNC Sekuritas and its affiliates and/or their offices, directors and employees may own or have positions in any investment mentioned herein or any investment related thereto and may from time to time add to or dispose of any such investment. PT MNC Sekuritas and its affiliates may act as market maker or have assumed an underwriting position in the securities of companies discussed herein (or investment related thereto) and may sell them to or buy them from customers on a principal basis and may also perform or seek to perform investment banking or underwriting services for or relating to those companies.