



Daily SCOPE

Wave

MNC Financial Center Lt. 14 – 16

Jl. Kebon Sirih No. 21 – 27, Jakarta 10340, Indonesia

www.mncsekuritas.id

a member of MNC Group

26 Juli 2019

Institution Research Team | herditya.wicaksana@mncgroup.com | +6221 29080 3111 Ext.52150

Jakarta Composite Index (JCI) *short term (1-2 days) bearish*

Selama IHSG belum dapat menguat dan menembus level 6,470 maka diperkirakan IHSG masih berpotensi terkoreksi.

Top picks of the Day :

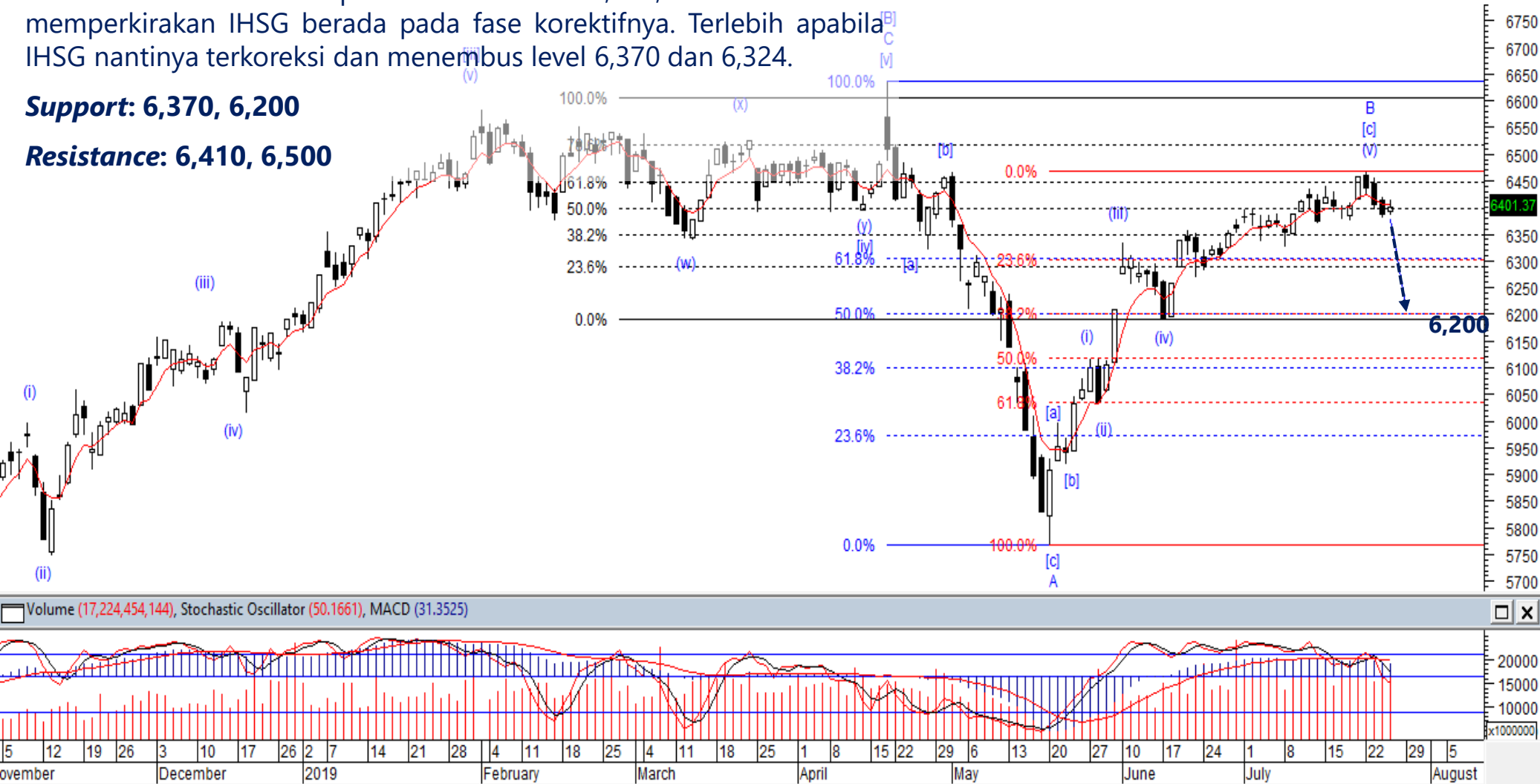
Stock	Close Price	Recommendation	Tactical Moves
APLN	214	Buy on Weakness	Pada perdagangan kemarin (25/7), APLN ditutup melemah 5% ke level 214. Kami memperkirakan koreksi APLN dapat berlanjut untuk membentuk wave [c] dari wave A ke level 200.
ESSA	302	Buy on Weakness	Posisi ESSA diperkirakan sedang membentuk wave (iii) dari wave [iii], dimana ESSA berpotensi untuk menguat kembali dalam jangka pendek.
WTON	580	Sell on Strength	Diperkirakan posisi WTON saat ini sedang berada pada awal wave (c) dari wave [ii]/[b]. Dimana koreksi WTON masih dapat berlanjut hingga area 490.
TLKM	4,210	Sell on Strength	Posisi TLKM sedang berada pada awal wave [c], dimana TLKM berpotensi untuk melanjutkan koreksinya. Adapun koreksi TLKM kami perkirakan berada pada level 3,930.

JCI – Will it Break 6,470?

Kemarin (25/7), IHSG ditutup menguat tipis 0,3% ke level 6,401. Selama IHSG belum mampu menembus level 6,470, maka kami masih memperkirakan IHSG berada pada fase korektifnya. Terlebih apabila IHSG nantinya terkoreksi dan menembus level 6,370 dan 6,324.

Support: 6,370, 6,200

Resistance: 6,410, 6,500



APLN – Buy on Weakness

Pada perdagangan kemarin (25/7), APLN ditutup melemah 5% ke level 214. Kami memperkirakan koreksi APLN dapat berlanjut untuk membentuk wave [c] dari wave A ke level 200.

Buy on Weakness: 200-214

Target Price: 255, 270

Stoploss: below 180



ESSA – Buy on Weakness

Posisi ESSA diperkirakan sedang membentuk wave (iii) dari wave [iii], dimana ESSA berpotensi untuk menguat kembali dalam jangka pendek.

Buy on Weakness: 296-302

Target Price: 326, 348, 370

Stoploss: below 292



WTON – Sell On Strength

Diperkirakan posisi WTON saat ini sedang berada pada awal wave (c) dari wave [ii]/[b]. Dimana koreksi WTON masih dapat berlanjut hingga area 490.

Sell on Strength: 580-605





Thendra Crisnanda – Head of Institution Research

thendra.crisnanda@mncgroup.com

Investment Strategy

Ext. 52162



Rr. Nurulita Harwaningrum – Research Analyst

roro.harwaningrum@mncgroup.com

Banking, Auto, Plantation

Ext. 52237



Victoria Venny – Research Analyst

victoria.nawang@mncgroup.com

Telco, Toll Road, Logistic, Consumer, Poultry

Ext. 52236



T. Herditya Wicaksana – Technical Analyst

herditya.wicaksana@mncgroup.com

Technical Specialist – Elliott Wave

Ext. 52150



Muhamad Rudy Setiawan – Research Associate

muhamad.setiawan@mncgroup.com

Construction, Property

Ext. 52317

Disclaimer : MNCS Daily Scope Wave has been issued by PT MNC Sekuritas, It may not be reproduced or further distributed or published, in whole or in part, for any purpose. PT MNC Sekuritas has based this document on information obtained from sources it believes to be reliable but which it has not independently verified; PT MNC Sekuritas makes no guarantee, representation or warranty and accepts no responsibility to liability as to its accuracy or completeness. Expression of opinion herein are those of the research department only and are subject to change without notice. This document is not and should not be construed as an offer or the solicitation of an offer to purchase or subscribe or sell any investment. PT MNC Sekuritas and its affiliates and/or their offices, directors and employees may own or have positions in any investment mentioned herein or any investment related thereto and may from time to time add to or dispose of any such investment. PT MNC Sekuritas and its affiliates may act as market maker or have assumed an underwriting position in the securities of companies discussed herein (or investment related thereto) and may sell them to or buy them from customers on a principal basis and may also perform or seek to perform investment banking or underwriting services for or relating to those companies.