



# Daily SCOPE

Wave

**MNC Financial Center Lt. 14 – 16**

Jl. Kebon Sirih No. 21 – 27, Jakarta 10340, Indonesia

[www.mncsekuritas.id](http://www.mncsekuritas.id)

a member of MNC Group

Institution Research Team | [herditya.wicaksana@mncgroup.com](mailto:herditya.wicaksana@mncgroup.com) | +6221 29080 3111 Ext.52150

**11 Juni 2019**

## Jakarta Composite Index (JCI) *short term (1-2 days) bearish*

IHSG kemarin masih dapat menguat sebesar 1,3%, dan pada saat pembukaan meninggalkan gap yang berada pada area 6,210-6,276. Kami perkirakan IHSG masih dapat menguat terbatas dengan kecenderungan koreksi terdekat ke arah 6,210 untuk menutup gap.

## Top picks of the Day :

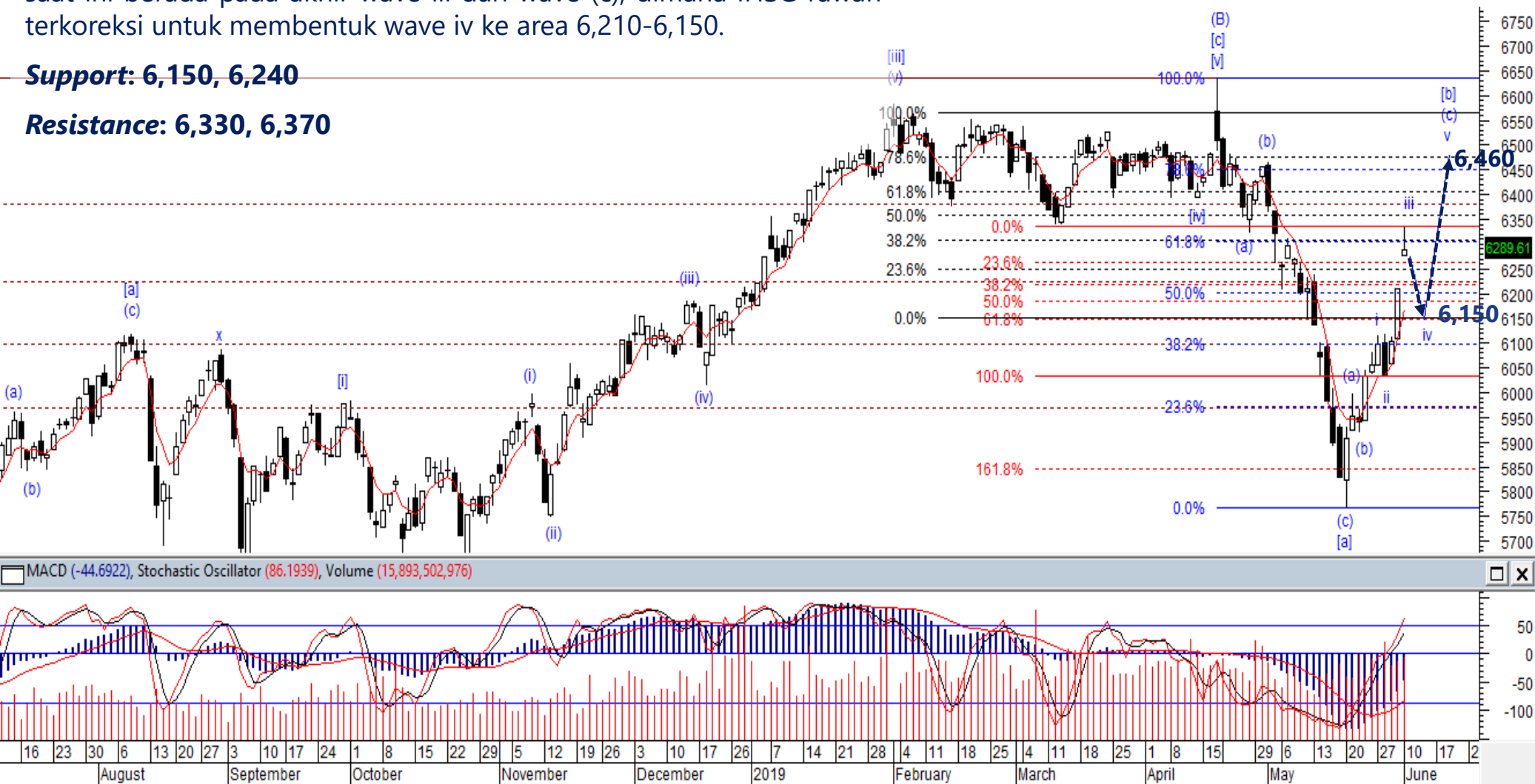
Stock	Close Price	Recommendation	Tactical Moves
ANTM	780	Buy on Weakness	ANTM sedang berada pada awal dari wave (iii), dimana ANTM masih berpotensi untuk menguat ke level area 850-900.
JSMR	5,700	Sell on Strength	JSMR sudah berada pada akhir wave [b]. JSMR berpotensi terkoreksi untuk membentuk wave [c] dengan level minimal 5,170 dan idealnya berada pada 4,750.
WIKA	2,400	Sell on Strength	WIKA sudah berada pada akhir wave B dari wave (B), dimana potensi kenaikan WIKA sudah mulai terbatas dan rawan terkoreksi. Diperkirakan level koreksi WIKA terdekat berada pada level 2,160.
PGAS	2,050	Sell on Strength	Posisi PGAS sudah berada pada akhir wave iv dari wave (c), dimana PGAS rawan terkoreksi untuk membentuk wave v ke level area 1,760-1,680.

# JCI – End of Wave 3

Kemarin (10/6), IHSG ditutup menguat 1,3% ke level 6,289. Posisi IHSG saat ini berada pada akhir wave iii dari wave (c), dimana IHSG rawan terkoreksi untuk membentuk wave iv ke area 6,210-6,150.

**Support: 6,150, 6,240**

**Resistance: 6,330, 6,370**



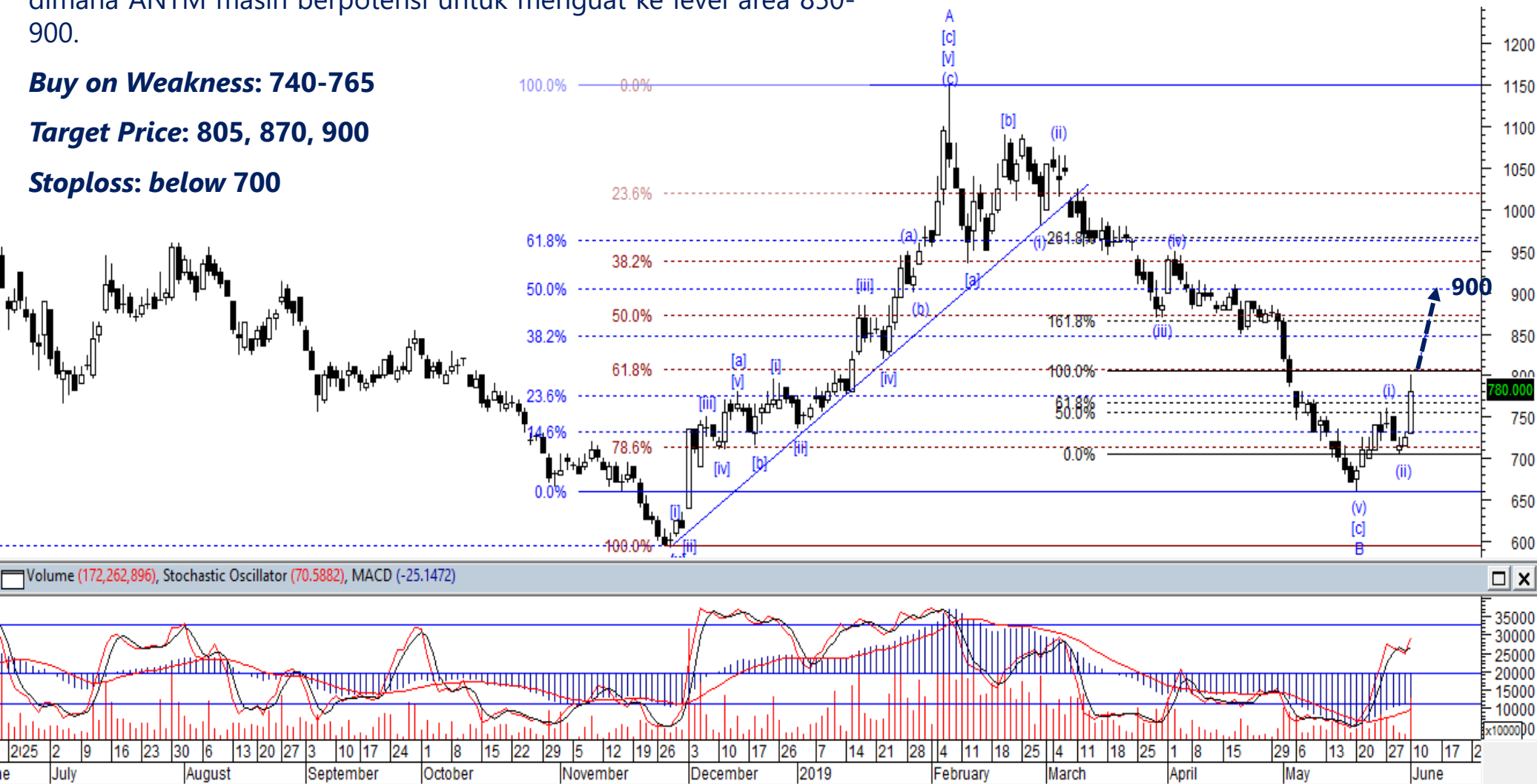
# ANTM – Buy on Weakness

Kami perkirakan ANTM sedang berada pada awal dari wave (iii), dimana ANTM masih berpotensi untuk menguat ke level area 850-900.

**Buy on Weakness: 740-765**

**Target Price: 805, 870, 900**

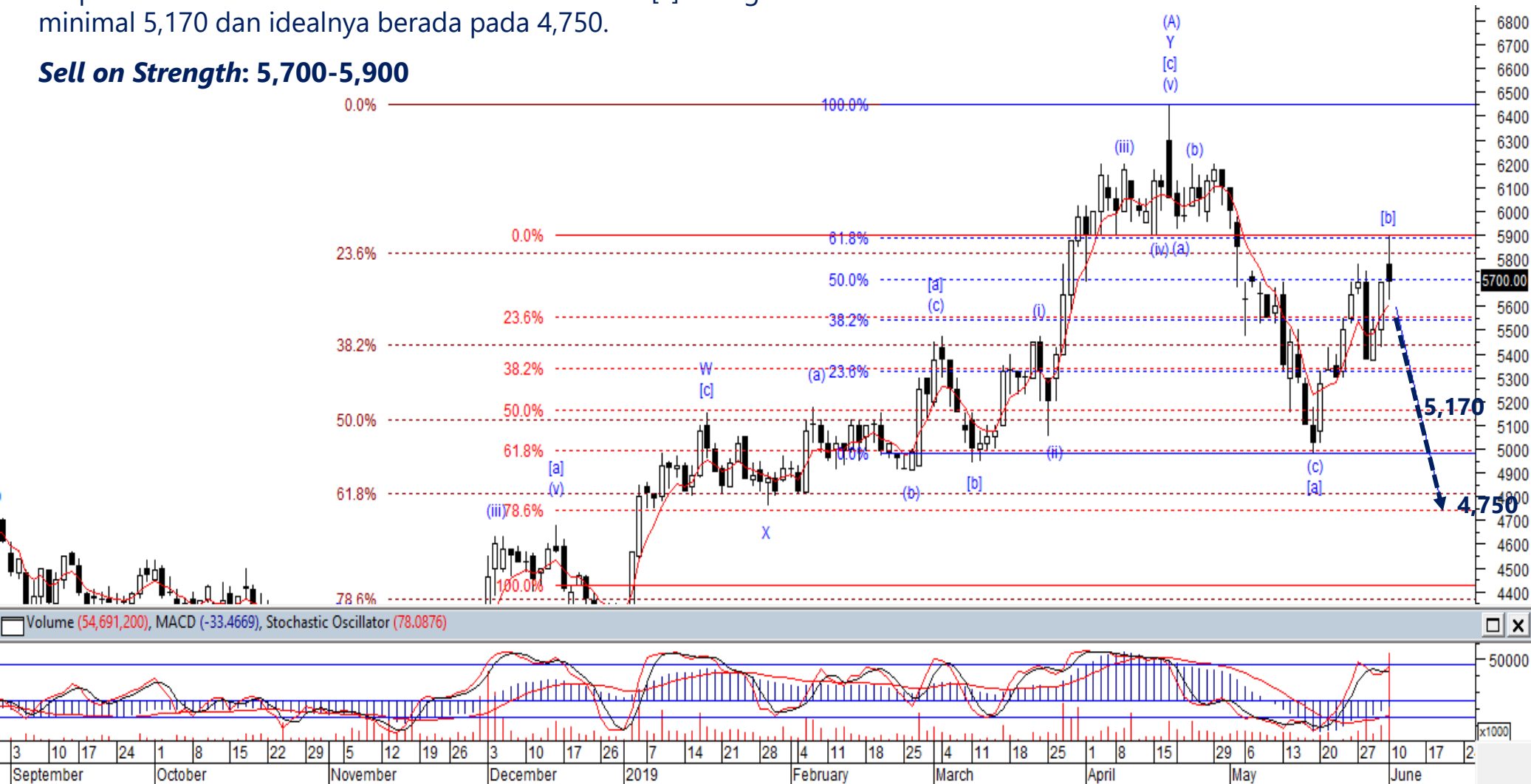
**Stoploss: below 700**



# JSMR – Sell On Strength

JSMR diperkirakan sudah berada pada akhir wave [b]. JSMR berpotensi terkoreksi untuk membentuk wave [c] dengan level minimal 5,170 dan idealnya berada pada 4,750.

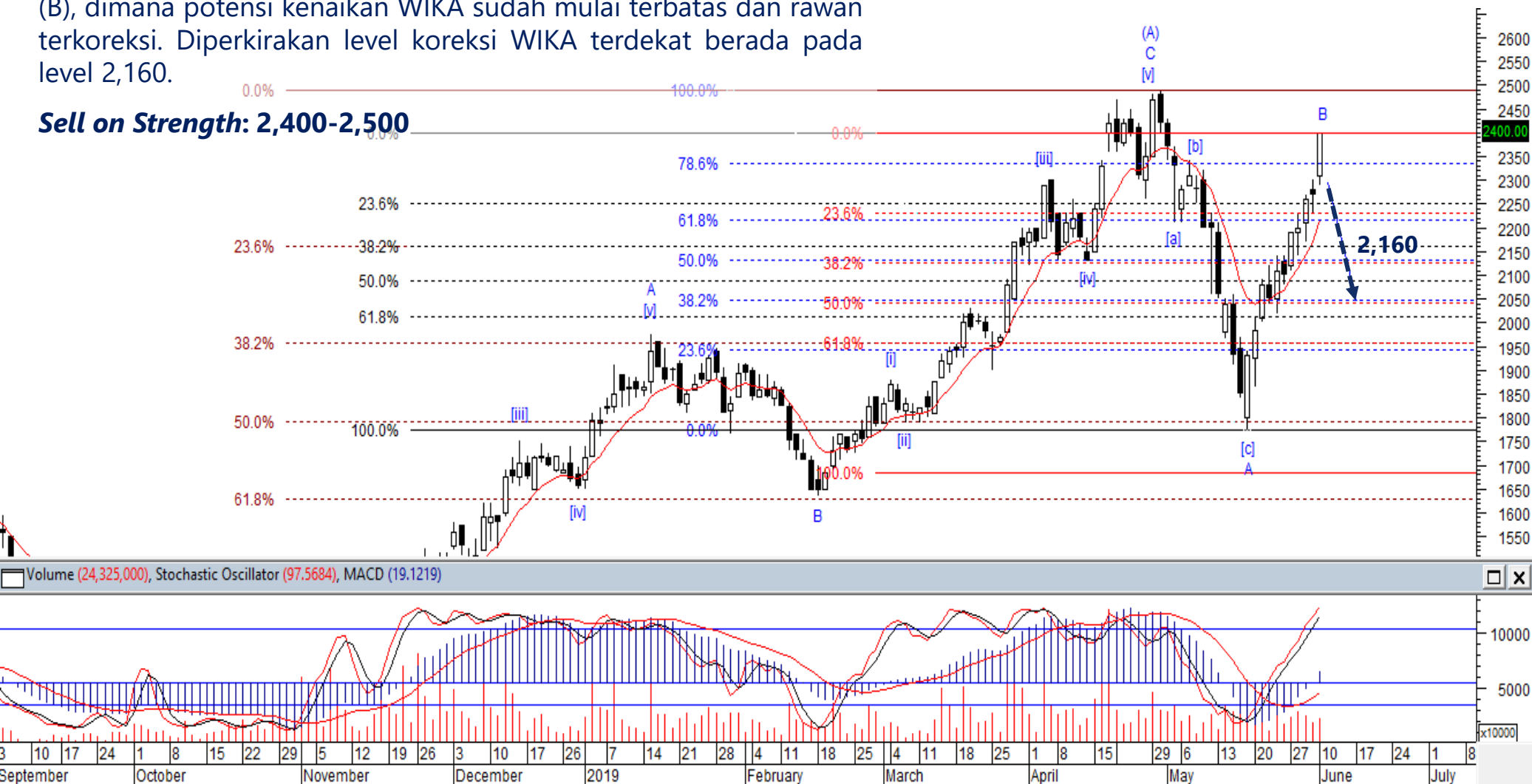
## Sell on Strength: 5,700-5,900



# WIKA – Sell On Strength

Kami perkirakan WIKA sudah berada pada akhir wave B dari wave (B), dimana potensi kenaikan WIKA sudah mulai terbatas dan rawan terkoreksi. Diperkirakan level koreksi WIKA terdekat berada pada level 2,160.

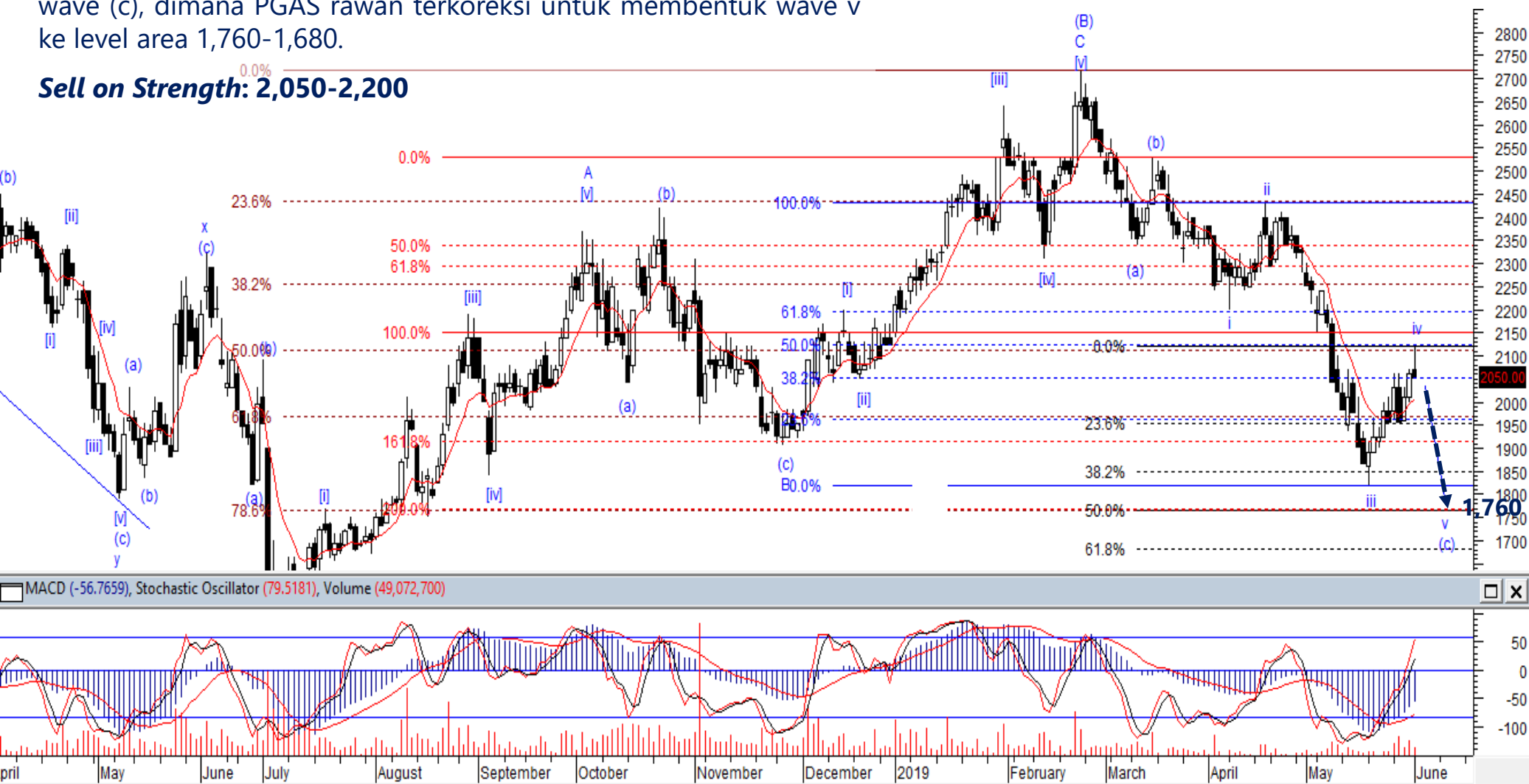
**Sell on Strength: 2,400-2,500**



# PGAS – Sell On Strength

Posisi PGAS kami perkirakan sudah berada pada akhir wave iv dari wave (c), dimana PGAS rawan terkoreksi untuk membentuk wave v ke level area 1,760-1,680.

**Sell on Strength: 2,050-2,200**







**Thendra Crisnanda – Head of Institution Research**  
[thendra.crisnanda@mncgroup.com](mailto:thendra.crisnanda@mncgroup.com)  
 Investment Strategy  
 Ext. 52162



**Victoria Venny – Research Analyst**  
[victoria.nawang@mncgroup.com](mailto:victoria.nawang@mncgroup.com)  
 Telco, Toll Road, Logistic, Consumer, Poultry  
 Ext. 52236



**Rr. Nurulita Harwaningrum – Research Analyst**  
[roro.harwaningrum@mncgroup.com](mailto:roro.harwaningrum@mncgroup.com)  
 Banking, Auto, Plantation  
 Ext. 52237



**Muhamad Rudy Setiawan – Research Associate**  
[muhamad.setiawan@mncgroup.com](mailto:muhamad.setiawan@mncgroup.com)  
 Construction, Property  
 Ext. 52317



**T. Herditya Wicaksana – Technical Analyst**  
[herditya.wicaksana@mncgroup.com](mailto:herditya.wicaksana@mncgroup.com)  
 Technical Specialist – Elliott Wave  
 Ext. 52150



**Krestanti Nugrahane Widhi – Research Associate**  
[krestanti.widhi@mncgroup.com](mailto:krestanti.widhi@mncgroup.com)  
 Plantation, Consumer  
 Ext. 52166

**Disclaimer :** MNCS Daily Scope Wave has been issued by PT MNC Sekuritas, It may not be reproduced or further distributed or published, in whole or in part, for any purpose. PT MNC Sekuritas has based this document on information obtained from sources it believes to be reliable but which it has not independently verified; PT MNC Sekuritas makes no guarantee, representation or warranty and accepts no responsibility to liability as to its accuracy or completeness. Expression of opinion herein are those of the research department only and are subject to change without notice. This document is not and should not be construed as an offer or the solicitation of an offer to purchase or subscribe or sell any investment. PT MNC Sekuritas and its affiliates and/or their offices, directors and employees may own or have positions in any investment mentioned herein or any investment related thereto and may from time to time add to or dispose of any such investment. PT MNC Sekuritas and its affiliates may act as market maker or have assumed an underwriting position in the securities of companies discusses herein (or investment related thereto) and may sell them to or buy them from customers on a principal basis and may also perform or seek to perform investment banking or underwriting services for or relating to those companies.