



# Daily SCOPE

Wave

**MNC Financial Center Lt. 14 – 16**

Jl. Kebon Sirih No. 21 – 27, Jakarta 10340, Indonesia

[www.mncsekuritas.id](http://www.mncsekuritas.id)

a member of MNC Group

Institution Research Team | [herditya.wicaksana@mncgroup.com](mailto:herditya.wicaksana@mncgroup.com) | +6221 29080 3111 Ext.52150

**13 Juni 2019**

## Jakarta Composite Index (JCI) *short term (1-2 days) bearish*

IHSG ditutup terkoreksi ke level 6,276. Kami masih memperkirakan IHSG akan membentuk wave iv terlebih dahulu menuju 6,150-6,210, dengan catatan IHSG tidak menguat dan menembus level 6,334.

### Top picks of the Day :

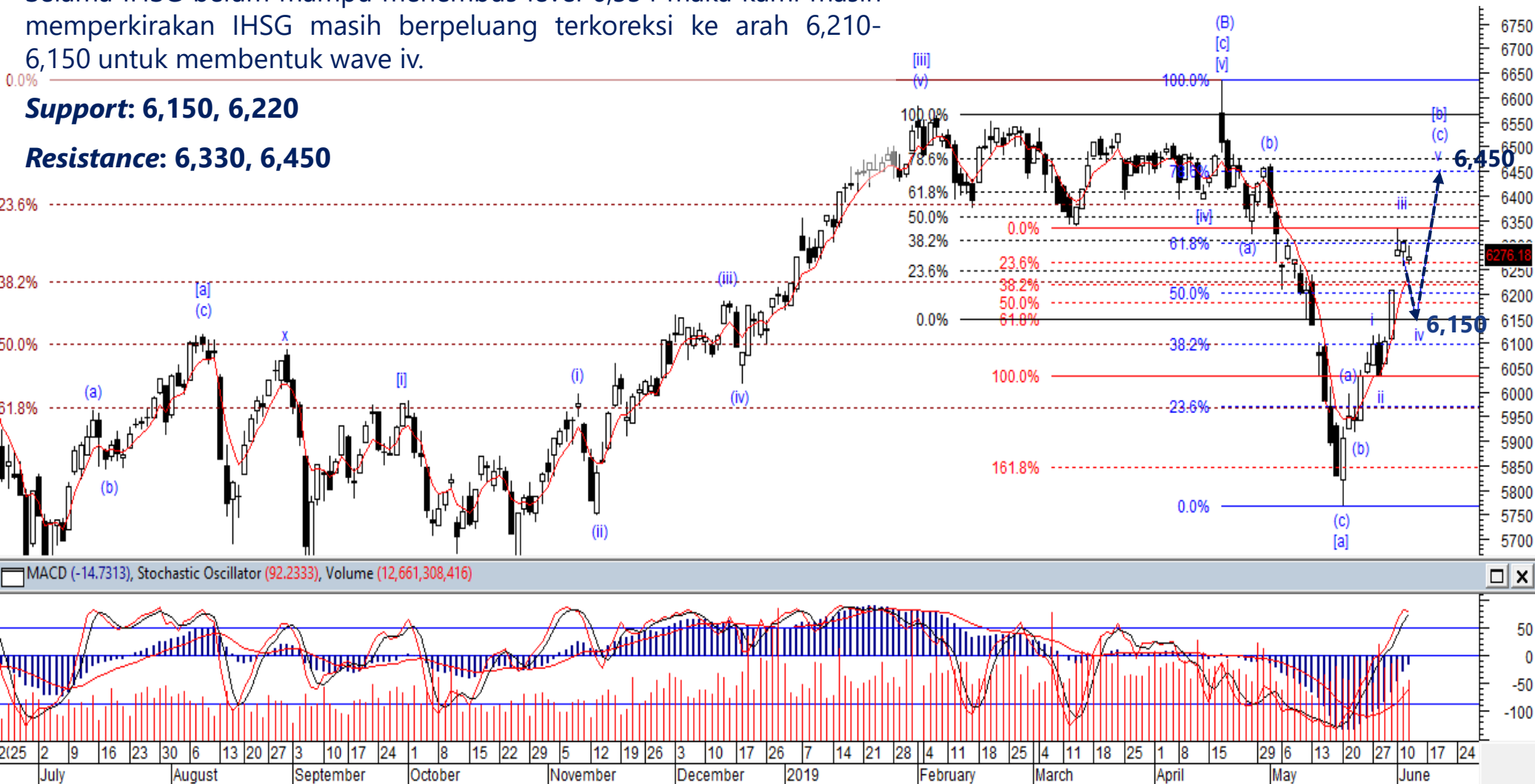
Stock	Close Price	Recommendation	Tactical Moves
ERAA	1,325	Buy on Weakness	ERAA sudah berada pada akhir wave (iii) dan berpotensi terkoreksi untuk membentuk wave (iv). Target koreksi wave (iv) berada pada 1,200, selanjutnya ERAA berpotensi menguat kembali untuk membentuk wave (v).
ESSA	308	Buy on Weakness	Posisi ESSA sedang membentuk wave (ii), dimana ESSA berpotensi terkoreksi terlebih dahulu ke level minimal 300. Selanjutnya ESSA berpotensi menguat kembali untuk membentuk wave (iii).
EXCL	2,900	Sell	EXCL saat ini sudah berada pada awal wave [c], sehingga EXCL berpotensi terkoreksi minimal ke level 2,610 terlebih dahulu.
TINS	1,170	Sell on Strength	Posisi TINS saat ini sudah berada pada akhir wave (iv) dari wave A. TINS berpotensi terkoreksi untuk membentuk wave (v) dengan target koreksi minimal pada 975.

# JCI – Minor Correction

Kemarin (12/6), IHSG ditutup terkoreksi tipis 0,47% ke level 6,276. Selama IHSG belum mampu menembus level 6,334 maka kami masih memperkirakan IHSG masih berpeluang terkoreksi ke arah 6,210-6,150 untuk membentuk wave iv.

**Support: 6,150, 6,220**

**Resistance: 6,330, 6,450**



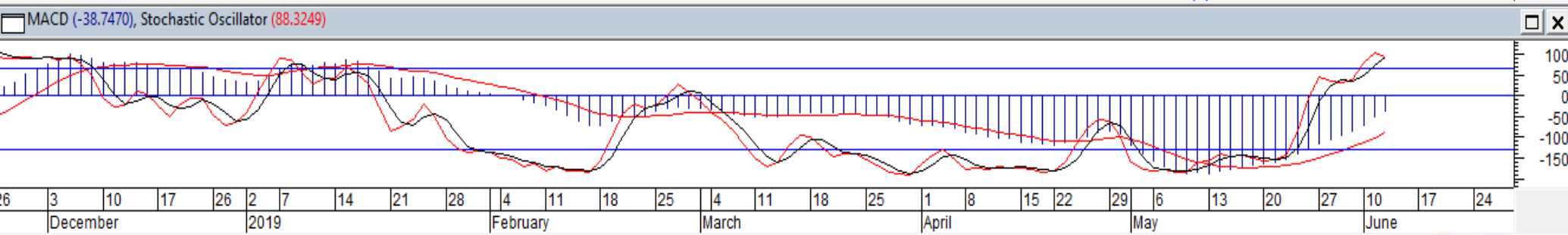
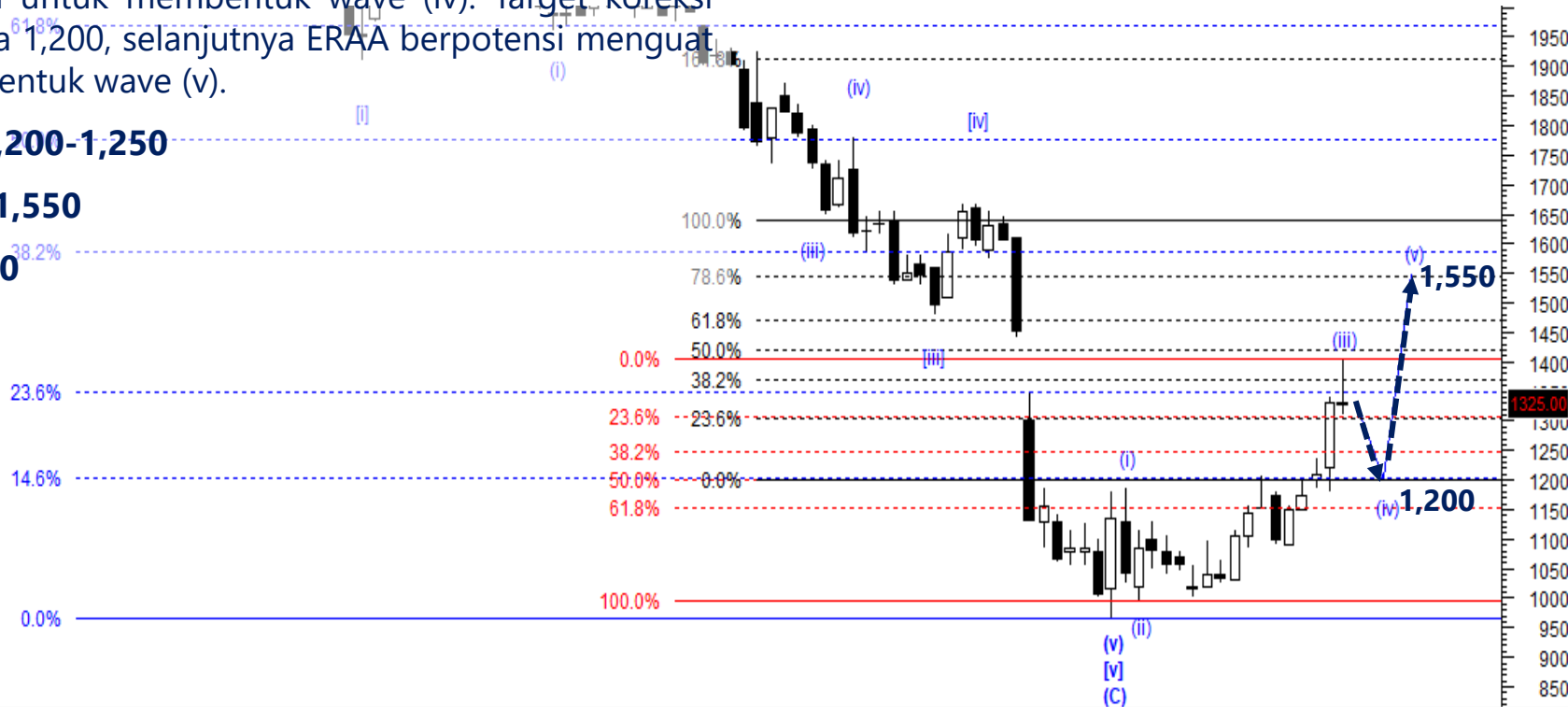
# ERAA – Buy on Weakness

ERAA kami perkirakan sudah berada pada akhir wave (iii) dan berpotensi terkoreksi untuk membentuk wave (iv). Target koreksi wave (iv) berada pada 1,200, selanjutnya ERAA berpotensi menguat kembali untuk membentuk wave (v).

**Buy on Weakness: 1,200-1,250**

**Target Price: 1,400, 1,550**

**Stoploss: below 1,190**



# ESSA – Buy on Weakness

Posisi ESSA kami perkirakan sedang membentuk wave (ii), dimana ESSA berpotensi terkoreksi terlebih dahulu ke level minimal 300. Selanjutnya ESSA berpotensi menguat kembali untuk membentuk wave (iii).

**Buy on Weakness: 286-300**

**Target Price: 330, 350**

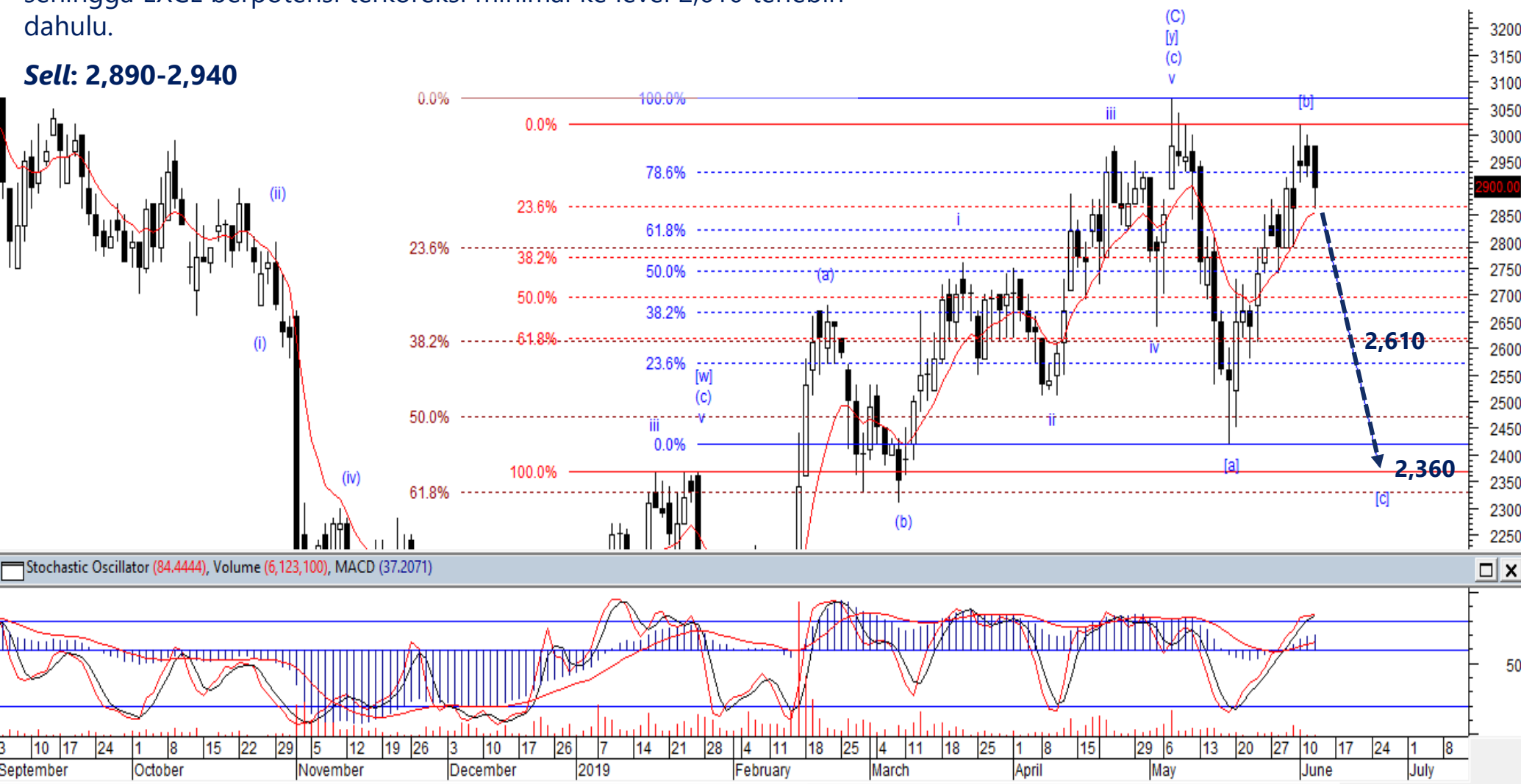
**Stoploss: below 262**



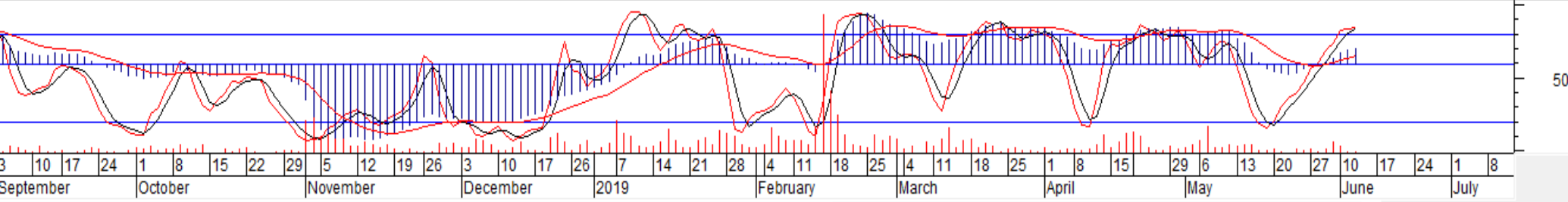
# EXCL – Sell

EXCL saat ini kami perkirakan sudah berada pada awal wave [c], sehingga EXCL berpotensi terkoreksi minimal ke level 2,610 terlebih dahulu.

**Sell: 2,890-2,940**



Stochastic Oscillator (84.4444), Volume (6,123,100), MACD (37.2071)



# TINS – Sell On Strength

Posisi TINS saat ini kami perkirakan sudah berada pada akhir wave (iv) dari wave A. TINS berpotensi terkoreksi untuk membentuk wave (v) dengan target koreksi minimal pada 975.

**Sell on Strength: 1,170-1,240**





**Thendra Crisnanda – Head of Institution Research**  
[thendra.crisnanda@mncgroup.com](mailto:thendra.crisnanda@mncgroup.com)  
 Investment Strategy  
 Ext. 52162



**Victoria Venny – Research Analyst**  
[victoria.nawang@mncgroup.com](mailto:victoria.nawang@mncgroup.com)  
 Telco, Toll Road, Logistic, Consumer, Poultry  
 Ext. 52236



**Rr. Nurulita Harwaningrum – Research Analyst**  
[roro.harwaningrum@mncgroup.com](mailto:roro.harwaningrum@mncgroup.com)  
 Banking, Auto, Plantation  
 Ext. 52237



**Muhamad Rudy Setiawan – Research Associate**  
[muhamad.setiawan@mncgroup.com](mailto:muhamad.setiawan@mncgroup.com)  
 Construction, Property  
 Ext. 52317



**T. Herditya Wicaksana – Technical Analyst**  
[herditya.wicaksana@mncgroup.com](mailto:herditya.wicaksana@mncgroup.com)  
 Technical Specialist – Elliott Wave  
 Ext. 52150



**Krestanti Nugrahane Widhi – Research Associate**  
[krestanti.widhi@mncgroup.com](mailto:krestanti.widhi@mncgroup.com)  
 Plantation, Consumer  
 Ext. 52166

**Disclaimer :** MNCS Daily Scope Wave has been issued by PT MNC Sekuritas, It may not be reproduced or further distributed or published, in whole or in part, for any purpose. PT MNC Sekuritas has based this document on information obtained from sources it believes to be reliable but which it has not independently verified; PT MNC Sekuritas makes no guarantee, representation or warranty and accepts no responsibility to liability as to its accuracy or completeness. Expression of opinion herein are those of the research department only and are subject to change without notice. This document is not and should not be construed as an offer or the solicitation of an offer to purchase or subscribe or sell any investment. PT MNC Sekuritas and its affiliates and/or their offices, directors and employees may own or have positions in any investment mentioned herein or any investment related thereto and may from time to time add to or dispose of any such investment. PT MNC Sekuritas and its affiliates may act as market maker or have assumed an underwriting position in the securities of companies discusses herein (or investment related thereto) and may sell them to or buy them from customers on a principal basis and may also perform or seek to perform investment banking or underwriting services for or relating to those companies.