



# Daily SCOPE

Wave

**MNC Financial Center Lt. 14 – 16**

Jl. Kebon Sirih No. 21 – 27, Jakarta 10340, Indonesia

[www.mncsekuritas.id](http://www.mncsekuritas.id)

a member of MNC Group

Institution Research Team | [herditya.wicaksana@mncgroup.com](mailto:herditya.wicaksana@mncgroup.com) | +6221 29080 3111 Ext.52150

**21 Mei 2019**

## Jakarta Composite Index (JCI) short term (1-2 days) bullish

Mengawali pekan (20/5), IHSG ditutup positif 1,4%. Diperkirakan penguatan IHSG ini bersifat jangka pendek selama IHSG belum mampu menembus level 6,150-6,200.

### Top picks of the Day :

Stock	Close Price	Recommendation	Tactical Moves
BSDE	1,185	Buy on Weakness	Posisi BSDE sudah berada pada akhir wave B. BSDE akan berpeluang menguat kembali ke area 1,300 dalam jangka pendek untuk membentuk wave C.
INTP	18,075	Buy on Weakness	INTP sudah berada pada akhir wave (v) dari wave [a]. INTP berpotensi untuk menguat membentuk wave [b].
JSMR	5,275	Buy on Weakness	Posisi JSMR berada pada awalan wave [v] dari wave C, dimana JSMR masih berpeluang melanjutkan penguatannya.
KLBF	1,330	Sell on Strength	KLBF sedang membentuk awalan wave (iv) dari wave [iii], dimana KLBF akan menguat terlebih dahulu sebelum terkoreksi kembali untuk membentuk wave (v).

# JCI – Technical Rebound

Kemarin IHSG ditutup menguat sebesar 1,4% ke level 5,907. IHSG telah berada pada akhir wave (iii) yang telah kami perkirakan. Selanjutnya IHSG berpotensi untuk menguat dan menguji kembali level terdekat di 5,950 dan kemudian area 6,000-6,050.

**Support: 5,850, 5,700**

**Resistance: 5,950, 6,050**



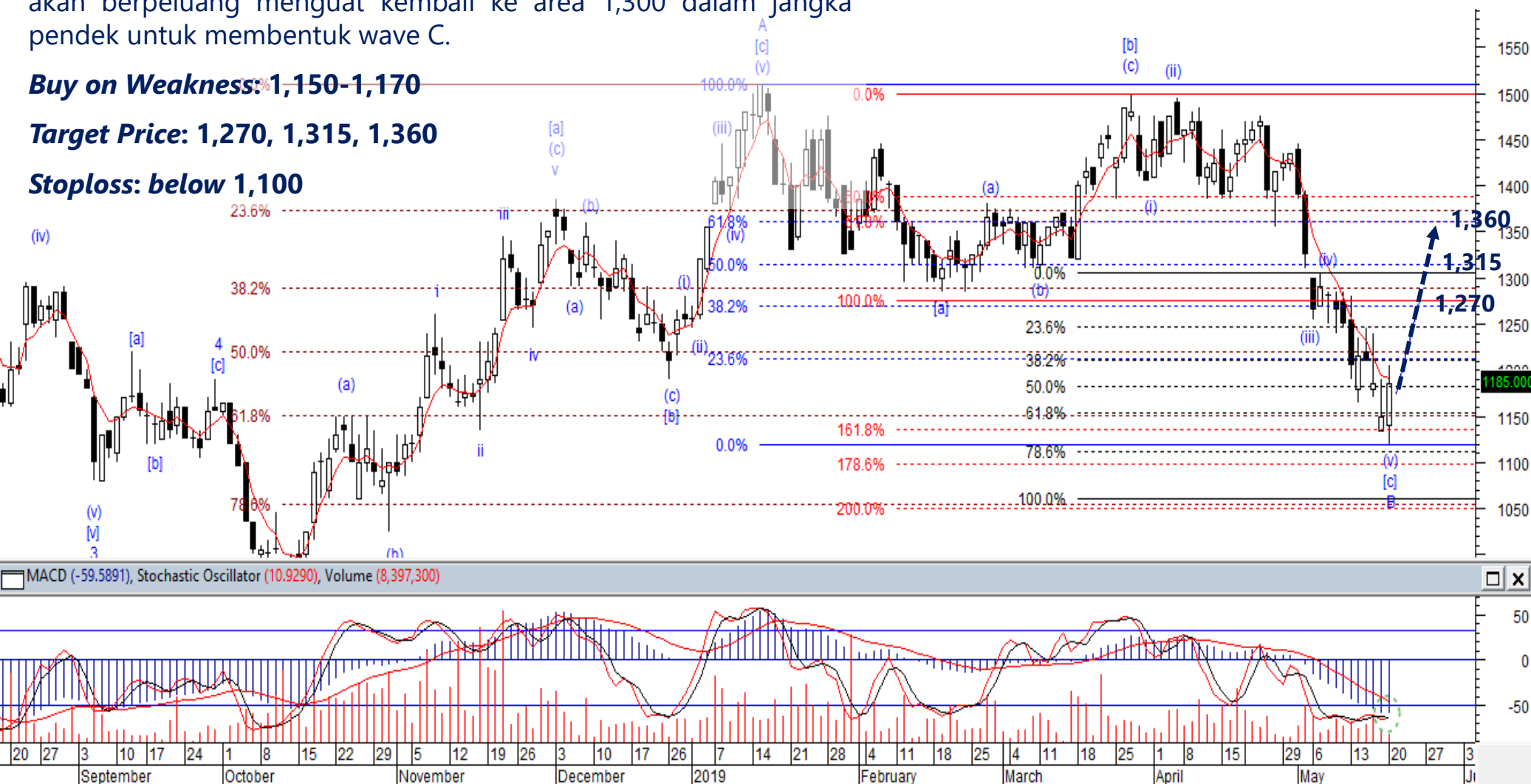
# BSDE – Buy on Weakness

Posisi BSDE diperkirakan sudah berada pada akhir wave B. BSDE akan berpeluang menguat kembali ke area 1,300 dalam jangka pendek untuk membentuk wave C.

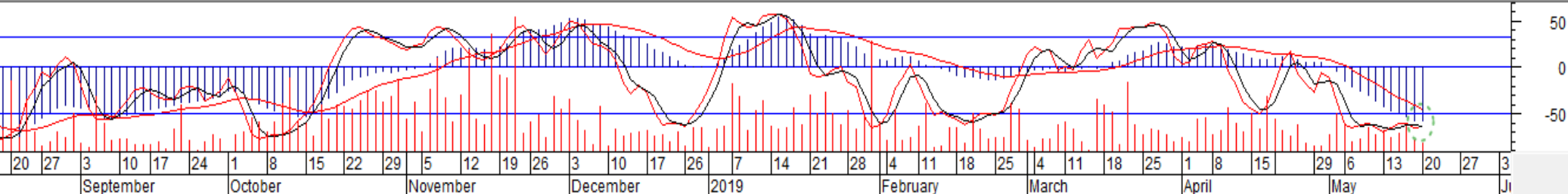
**Buy on Weakness: 1,150-1,170**

**Target Price: 1,270, 1,315, 1,360**

**Stoploss: below 1,100**



MACD (-59.5891), Stochastic Oscillator (10.9290), Volume (8,397,300)



# INTP – Buy on Weakness

Kami perkirakan INTP sudah berada pada akhir wave (v) dari wave [a]. INTP berpotensi untuk menguat membentuk wave [b].

**Buy on Weakness: 17,800-18,000**

**Target Price: 19,500, 20,000**

**Stoploss: below 17,000**



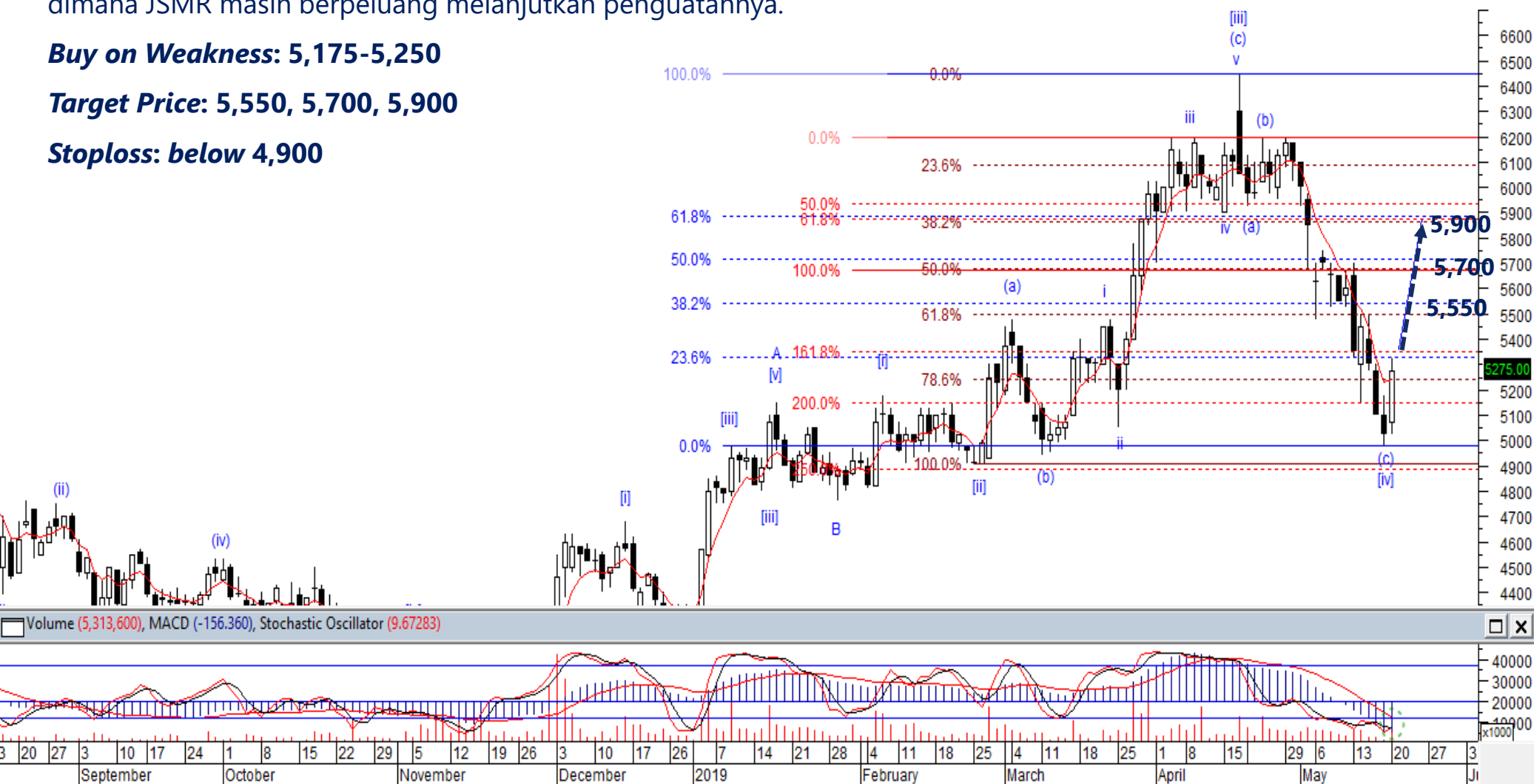
# JSMR – Buy on Weakness

Posisi JSMR diperkirakan berada pada awalan wave [v] dari wave C, dimana JSMR masih berpeluang melanjutkan penguatannya.

**Buy on Weakness: 5,175-5,250**

**Target Price: 5,550, 5,700, 5,900**

**Stoploss: below 4,900**



Volume (5,313,600), MACD (-156.360), Stochastic Oscillator (9.67283)

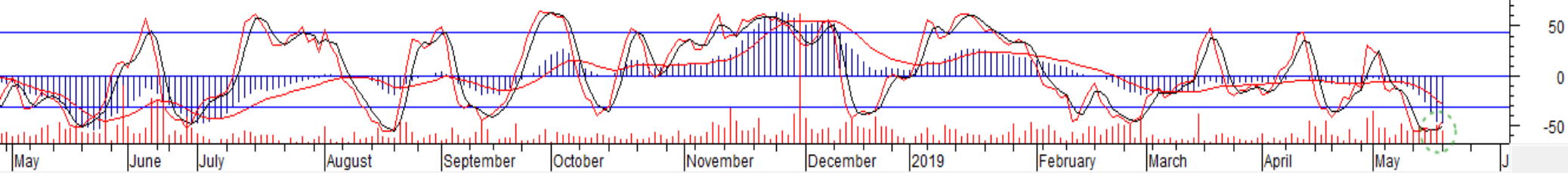
# KLBF – Sell On Strength

KLBF kami perkirakan sedang membentuk awalan wave (iv) dari wave [iii], dimana KLBF akan menguat terlebih dahulu sebelum terkoreksi kembali untuk membentuk wave (v).

**Sell on Strength: 1,400-1,450**



MACD (-48.5220), Stochastic Oscillator (8.53659), Volume (24,935,600)







**Thendra Crisnanda – Head of Institution Research**  
[thendra.crisnanda@mncgroup.com](mailto:thendra.crisnanda@mncgroup.com)  
 Investment Strategy  
 Ext. 52162



**Victoria Venny – Research Analyst**  
[victoria.nawang@mncgroup.com](mailto:victoria.nawang@mncgroup.com)  
 Telco, Toll Road, Logistic, Consumer, Poultry  
 Ext. 52236



**Rr. Nurulita Harwaningrum – Research Analyst**  
[roro.harwaningrum@mncgroup.com](mailto:roro.harwaningrum@mncgroup.com)  
 Banking, Auto, Plantation  
 Ext. 52237



**Muhamad Rudy Setiawan – Research Associate**  
[muhamad.setiawan@mncgroup.com](mailto:muhamad.setiawan@mncgroup.com)  
 Construction, Property  
 Ext. 52317



**T. Herditya Wicaksana – Technical Analyst**  
[herditya.wicaksana@mncgroup.com](mailto:herditya.wicaksana@mncgroup.com)  
 Technical Specialist – Elliott Wave  
 Ext. 52150



**Krestanti Nugrahane Widhi – Research Associate**  
[krestanti.widhi@mncgroup.com](mailto:krestanti.widhi@mncgroup.com)  
 Plantation, Consumer  
 Ext. 52166

**Disclaimer :** MNCS Daily Scope Wave has been issued by PT MNC Sekuritas, It may not be reproduced or further distributed or published, in whole or in part, for any purpose. PT MNC Sekuritas has based this document on information obtained from sources it believes to be reliable but which it has not independently verified; PT MNC Sekuritas makes no guarantee, representation or warranty and accepts no responsibility to liability as to its accuracy or completeness. Expression of opinion herein are those of the research department only and are subject to change without notice. This document is not and should not be construed as an offer or the solicitation of an offer to purchase or subscribe or sell any investment. PT MNC Sekuritas and its affiliates and/or their offices, directors and employees may own or have positions in any investment mentioned herein or any investment related thereto and may from time to time add to or dispose of any such investment. PT MNC Sekuritas and its affiliates may act as market maker or have assumed an underwriting position in the securities of companies discusses herein (or investment related thereto) and may sell them to or buy them from customers on a principal basis and may also perform or seek to perform investment banking or underwriting services for or relating to those companies.