



# Daily SCOPE

Wave

**MNC Financial Center Lt. 14 – 16**

Jl. Kebon Sirih No. 21 – 27, Jakarta 10340, Indonesia

[www.mncsekuritas.id](http://www.mncsekuritas.id)

a member of MNC Group

**19 September 2019**

Institution Research Team | [herditya.wicaksana@mncgroup.com](mailto:herditya.wicaksana@mncgroup.com) | +6221 29080 3111 Ext.52150

## Jakarta Composite Index (JCI) *short term (1-2 days) bullish*

Pergerakan IHSG kami perkirakan masih akan menguat untuk menguji area 6,300-6,315. Apabila IHSG belum mampu untuk menembus 6,415, maka IHSG akan berbalik arah minimal ke area 6,100.

### Top picks of the Day :

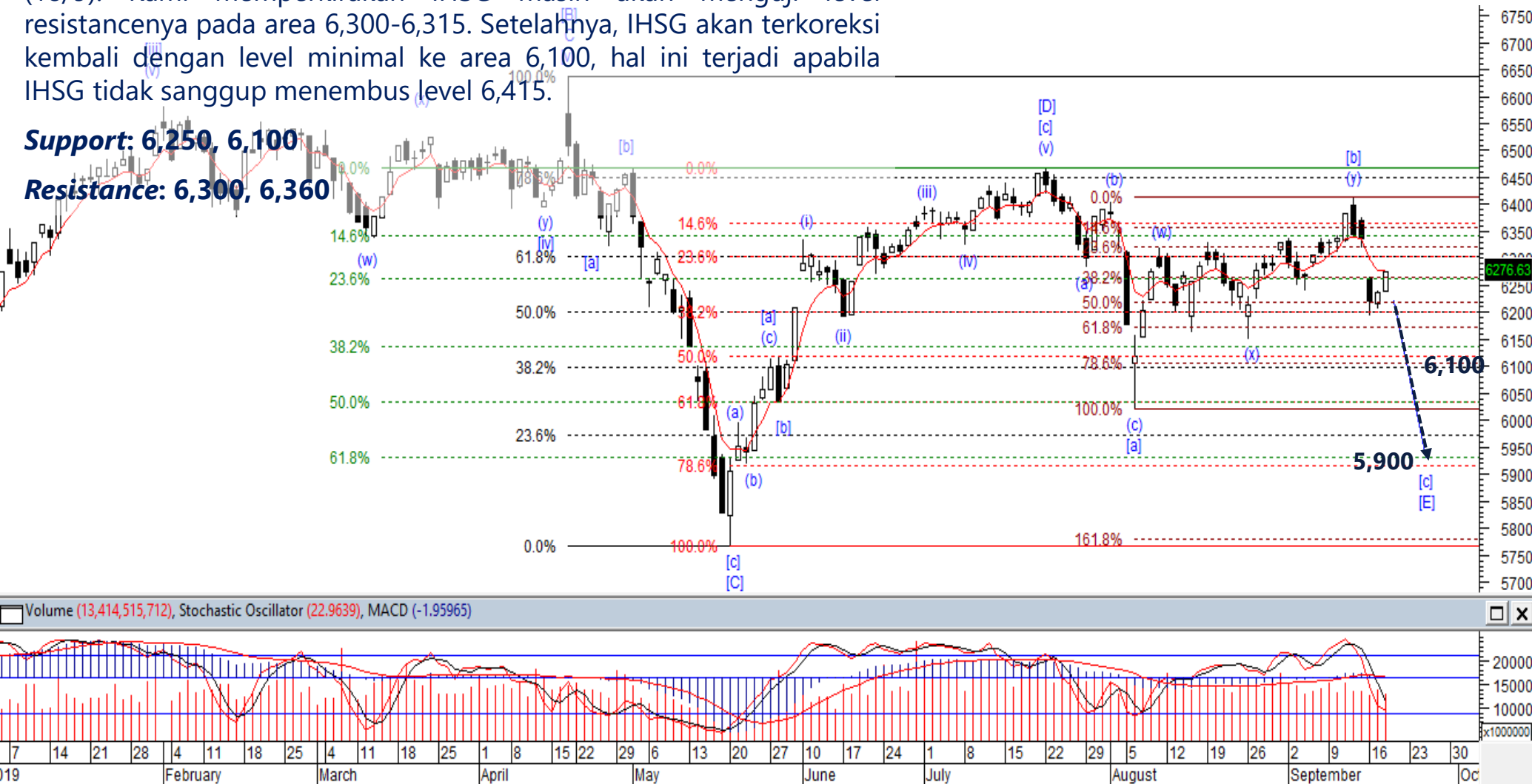
Stock	Close Price	Recommendation	Tactical Moves
CPIN	5,350	Buy on Weakness	CPIN masih berada pada wave (iv) dari wave [i]. Hal ini berarti CPIN berpotensi untuk terkoreksi terlebih dahulu dan kemudian berbalik menguat.
BNLI	1,070	Buy on Weakness	Posisi BNLI saat ini berada pada awal wave [v] dari wave C, dimana BNLI masih berpotensi melanjutkan penguatannya ke arah 1,150-1,180.
AKRA	3,970	Buy on Weakness	Posisi AKRA saat ini sudah berada pada akhir wave 2 dari wave (C), dimana koreksi AKRA cenderung terbatas. Selanjutnya, AKRA berpotensi untuk menguat kembali membentuk wave 3.
WIKA	2,020	Sell on Strength	WIKA masih berpotensi terkoreksi untuk membentuk wave [v] dari wave C dari wave (B). Adapun level koreksi WIKA berada pada level 1,920 dan 1,775.

# JCI – Test Resistance

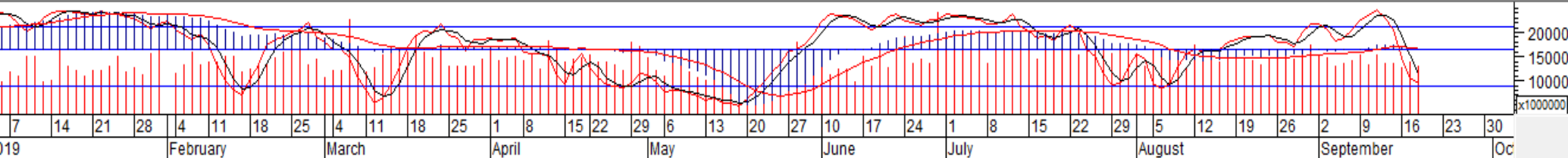
IHSG ditutup menguat 0,6% ke level 6,276 pada perdagangan kemarin (18/9). Kami memperkirakan IHSG masih akan menguji level resistancenya pada area 6,300-6,315. Setelahnya, IHSG akan terkoreksi kembali dengan level minimal ke area 6,100, hal ini terjadi apabila IHSG tidak sanggup menembus level 6,415.

**Support: 6,250, 6,100**

**Resistance: 6,300, 6,360**



Volume (13,414,515,712), Stochastic Oscillator (22,9639), MACD (-1,95965)



# CPIN – Buy on Weakness

Selama CPIN belum mampu menembus 5,425, maka kami perkirakan CPIN masih berada pada wave (iv) dari wave [i]. Hal ini berarti CPIN berpotensi untuk terkoreksi terlebih dahulu dan kemudian berbalik menguat.

**Buy on Weakness: 4,925-5,175**

**Target Price: 5,600, 5,950**

**Stoploss: below 4,670**



# BNLI – Buy on Weakness

Kami memperkirakan posisi BNLI saat ini berada pada awal wave [v] dari wave C, dimana BNLI masih berpotensi melanjutkan penguatannya ke arah 1,150-1,180.

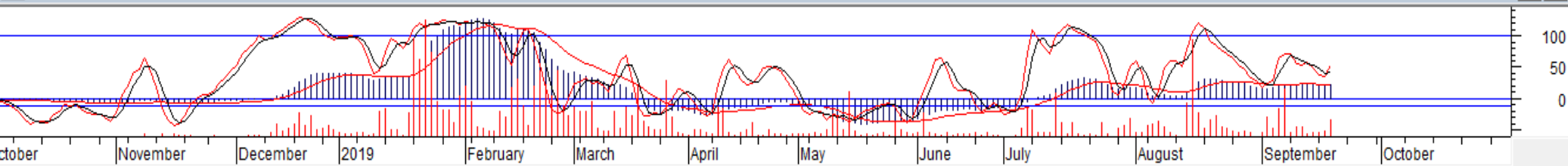
**Buy on Weakness: 1,020-1,050**

**Target Price: 1,150, 1,180**

**Stoploss: below 980**



MACD (23.9012), Stochastic Oscillator (54.5455), Volume (63,516,800)



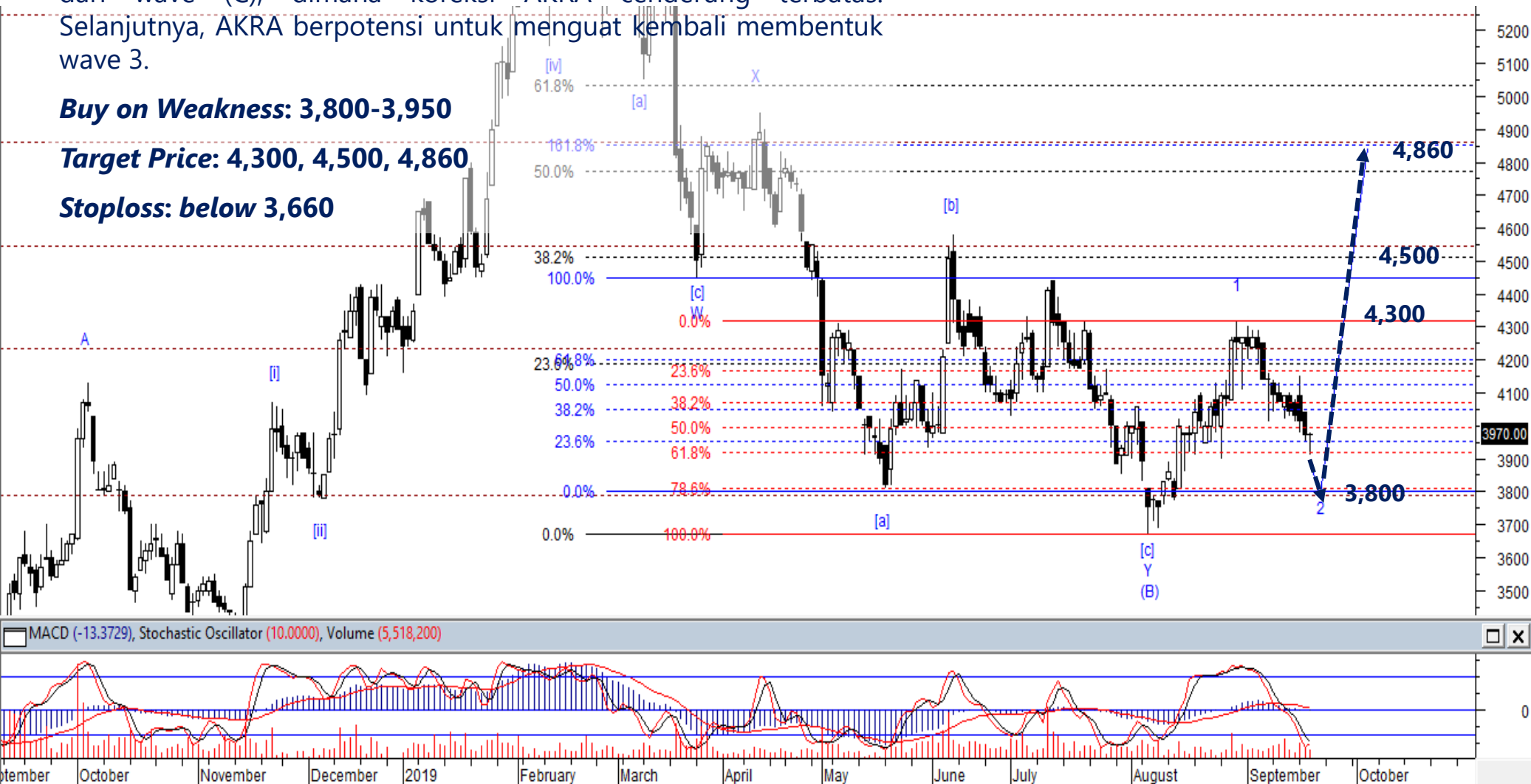
# AKRA – Buy on Weakness

Diperkirakan posisi AKRA saat ini sudah berada pada akhir wave 2 dari wave (C), dimana koreksi AKRA cenderung terbatas. Selanjutnya, AKRA berpotensi untuk menguat kembali membentuk wave 3.

**Buy on Weakness: 3,800-3,950**

**Target Price: 4,300, 4,500, 4,860**

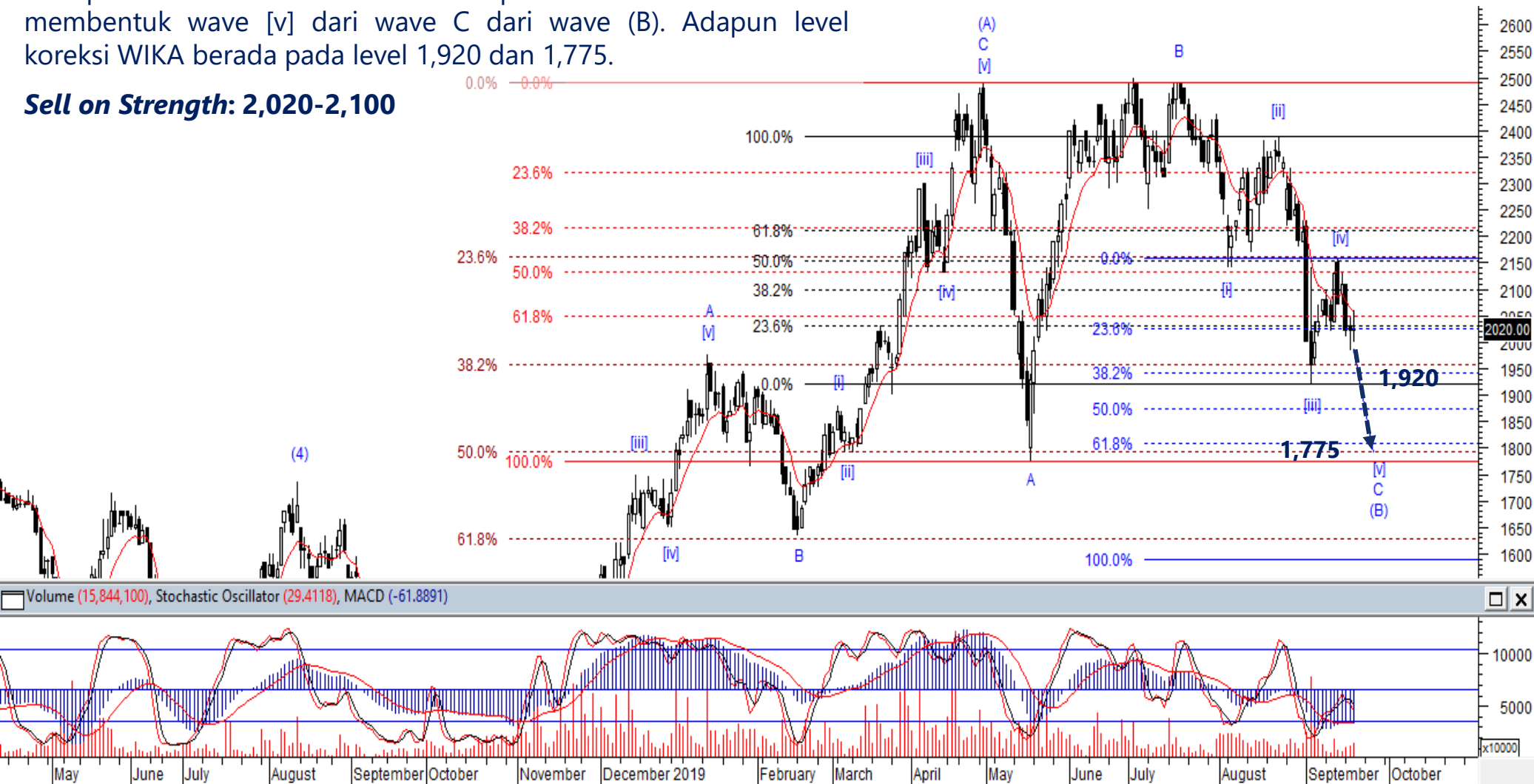
**Stoploss: below 3,660**



# WIKA – Sell On Strength

Selama tidak menguat dan menembus 2,160, maka kami memperkirakan WIKA masih berpotensi terkoreksi untuk membentuk wave [v] dari wave C dari wave (B). Adapun level koreksi WIKA berada pada level 1,920 dan 1,775.

**Sell on Strength: 2,020-2,100**





**Thendra Crisnanda – Head of Institution Research**  
[thendra.crisnanda@mncgroup.com](mailto:thendra.crisnanda@mncgroup.com)  
Investment Strategy  
Ext. 52162



**Victoria Venny – Research Analyst**  
[victoria.nawang@mncgroup.com](mailto:victoria.nawang@mncgroup.com)  
Telco, Toll Road, Logistic, Consumer, Poultry  
Ext. 52236



**T. Herditya Wicaksana – Technical Analyst**  
[herditya.wicaksana@mncgroup.com](mailto:herditya.wicaksana@mncgroup.com)  
Technical Specialist – Elliott Wave  
Ext. 52150



**Muhamad Rudy Setiawan – Research Analyst**  
[muhamad.setiawan@mncgroup.com](mailto:muhamad.setiawan@mncgroup.com)  
Construction, Property, Oil and Gas  
Ext. 52317



**Catherina Vincentia – Research Associate**  
[catherina.vincentia@mncgroup.com](mailto:catherina.vincentia@mncgroup.com)  
Ext. 52306



**Jessica Sukimaja – Research Associate**  
[jessica.sukimaja@mncgroup.com](mailto:jessica.sukimaja@mncgroup.com)  
Ext. 52307

**Disclaimer :** MNCS Daily Scope Wave has been issued by PT MNC Sekuritas, It may not be reproduced or further distributed or published, in whole or in part, for any purpose. PT MNC Sekuritas has based this document on information obtained from sources it believes to be reliable but which it has not independently verified; PT MNC Sekuritas makes no guarantee, representation or warranty and accepts no responsibility to liability as to its accuracy or completeness. Expression of opinion herein are those of the research department only and are subject to change without notice. This document is not and should not be construed as an offer or the solicitation of an offer to purchase or subscribe or sell any investment. PT MNC Sekuritas and its affiliates and/or their offices, directors and employees may own or have positions in any investment mentioned herein or any investment related thereto and may from time to time add to or dispose of any such investment. PT MNC Sekuritas and its affiliates may act as market maker or have assumed an underwriting position in the securities of companies discussed herein (or investment related thereto) and may sell them to or buy them from customers on a principal basis and may also perform or seek to perform investment banking or underwriting services for or relating to those companies.