



# Daily SCOPE

## Wave

**MNC Financial Center Lt. 14 – 16**

Jl. Kebon Sirih No. 21 – 27, Jakarta 10340, Indonesia

[www.mncsekuritas.id](http://www.mncsekuritas.id)

a member of MNC Group

**28 Agustus 2020**

Institution Research Team | [herditya.wicaksana@mncgroup.com](mailto:herditya.wicaksana@mncgroup.com) | +6221 29080 3111 Ext.52150

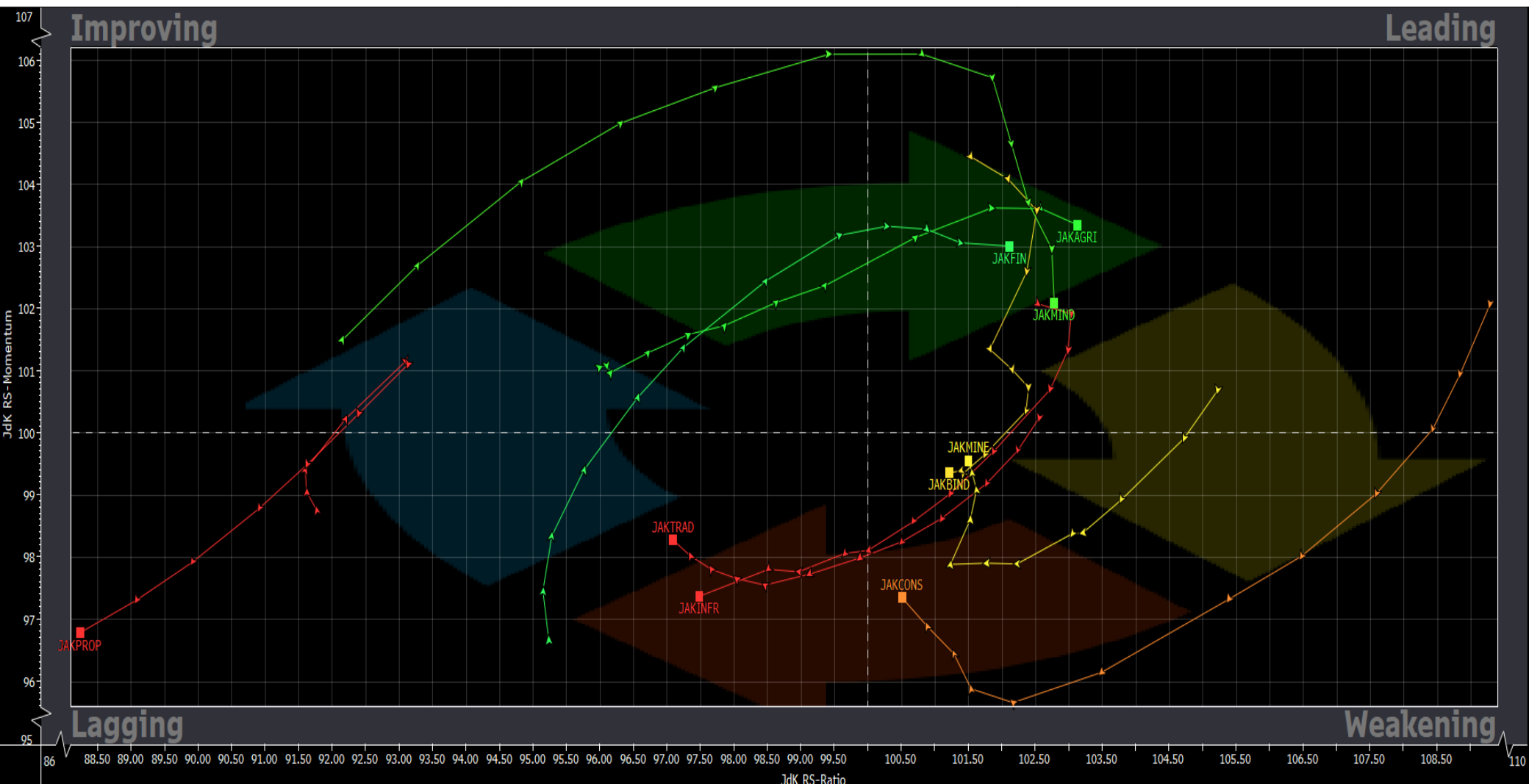
## Jakarta Composite Index (JCI) *short term (1-2 days) bearish*

*Pergerakan IHSG sudah terbatas oleh MA200 di area 5,370-5,390. Tetap waspada pergerakan IHSG selanjutnya meskipun ada potensi IHSG menuju ke fibo cluster di 5,400.*

### Top picks of the Day :

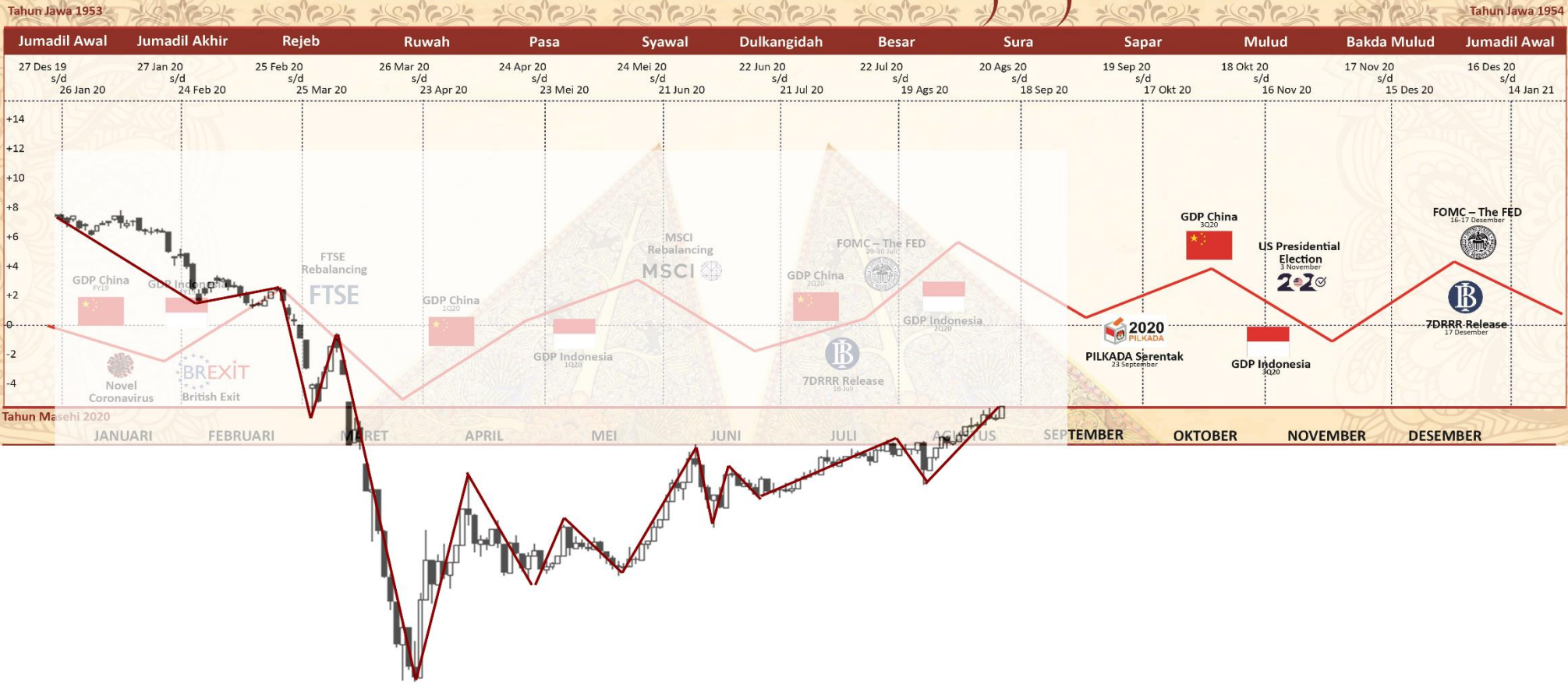
Stock	Close Price	Recommendation	Tactical Moves
INTP	12,200	Buy on Weakness	Selama tidak terkoreksi menembus 11,775, maka posisi INTP saat ini sedang berada pada wave 2 dari wave (C).
EXCL	2,540	Buy on Weakness	Selama EXCL tidak terkoreksi menembus 2,380, maka pergerakan EXCL kemarin merupakan awal dari wave (iii) dari wave [c] dari wave B.
BSDE	780	Buy on Weakness	Pergerakan BSDE diperkirakan sedang berada di wave (iv) dari wave [iii] dari wave C.
BBRI	3,700	Sell on Strength	Selama BBRI belum mampu ditutup menguat di atas 3,820, maka kami mempekirakan pergerakan BBRI selanjutnya masih rentan terkoreksi.

# RRG – Relative Rotation Graph



# MNCS Primbon Index

## Primbon Index 2020



# JCI – Filling the Gap?

IHSG kembali ditutup menguat 0,6% ke level 5,371 dan sudah mengenai target resistance yang kami berikan kemarin. Pergerakan IHSG kemarin (27/8) pun sudah terbatas oleh MA200 yang berada pada area 5,370-5,390. Meskipun terdapat fibonacci cluster yang terletak pada level 5,400, namun pergerakan IHSG saat ini rentan terkoreksi ke area 5,200-5,270.

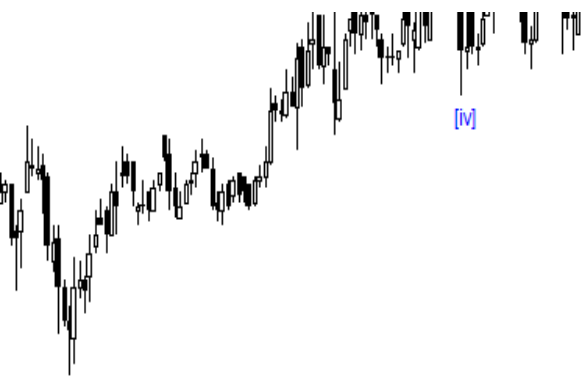
**Support: 5,260, 5,220**

**Resistance: 5,380, 5,400**





# EXCL – Buy on Weakness

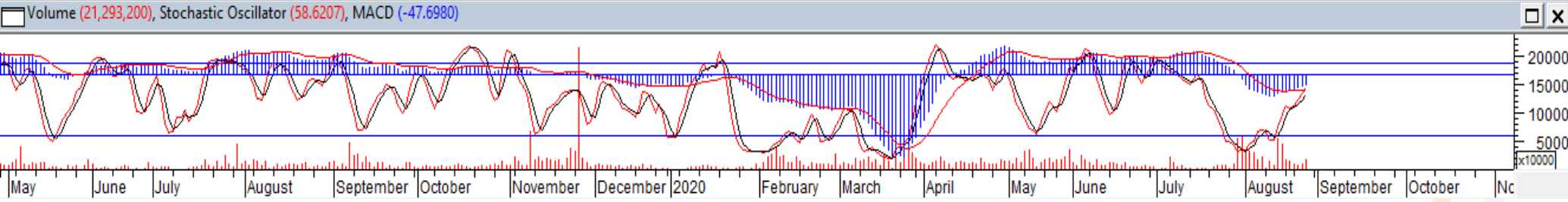


Selama EXCL tidak terkoreksi menembus 2,380, maka pergerakan EXCL kemarin merupakan awal dari wave (iii) dari wave [c] dari wave B. Hal tersebut berarti EXCL masih berpeluang untuk menguat kembali.

**Buy on Weakness: 2,500-2,540**

**Target Price: 2,800, 2,900**

**Stoploss: below 2,380**



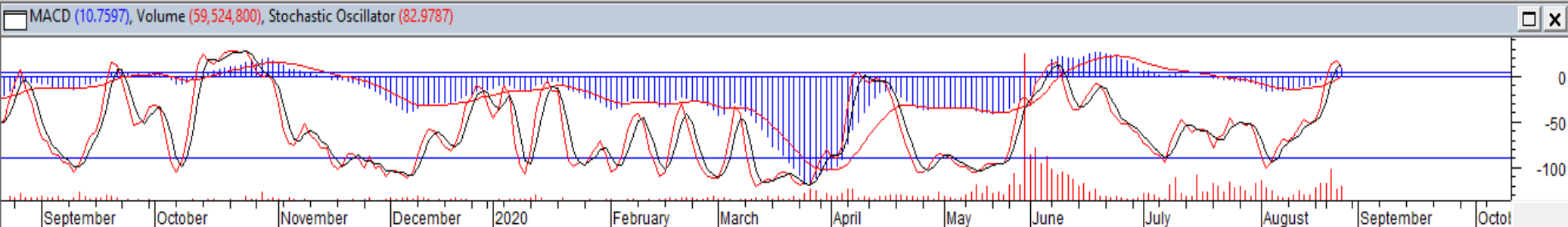
# BSDE – Buy on Weakness

Selama belum mampu menembus resistance 810, maka pergerakan BSDE kemarin (27/8) kami perkirakan sedang berada di wave (iv) dari wave [iii] dari wave C. Hal tersebut berarti BSDE masih berpeluang untuk terkoreksi terlebih dahulu, setelah terkonfirmasi membentuk wave (iv), maka BSDE berpotensi berbalik menguat untuk membentuk wave (v).

**Buy on Weakness: 750-780**

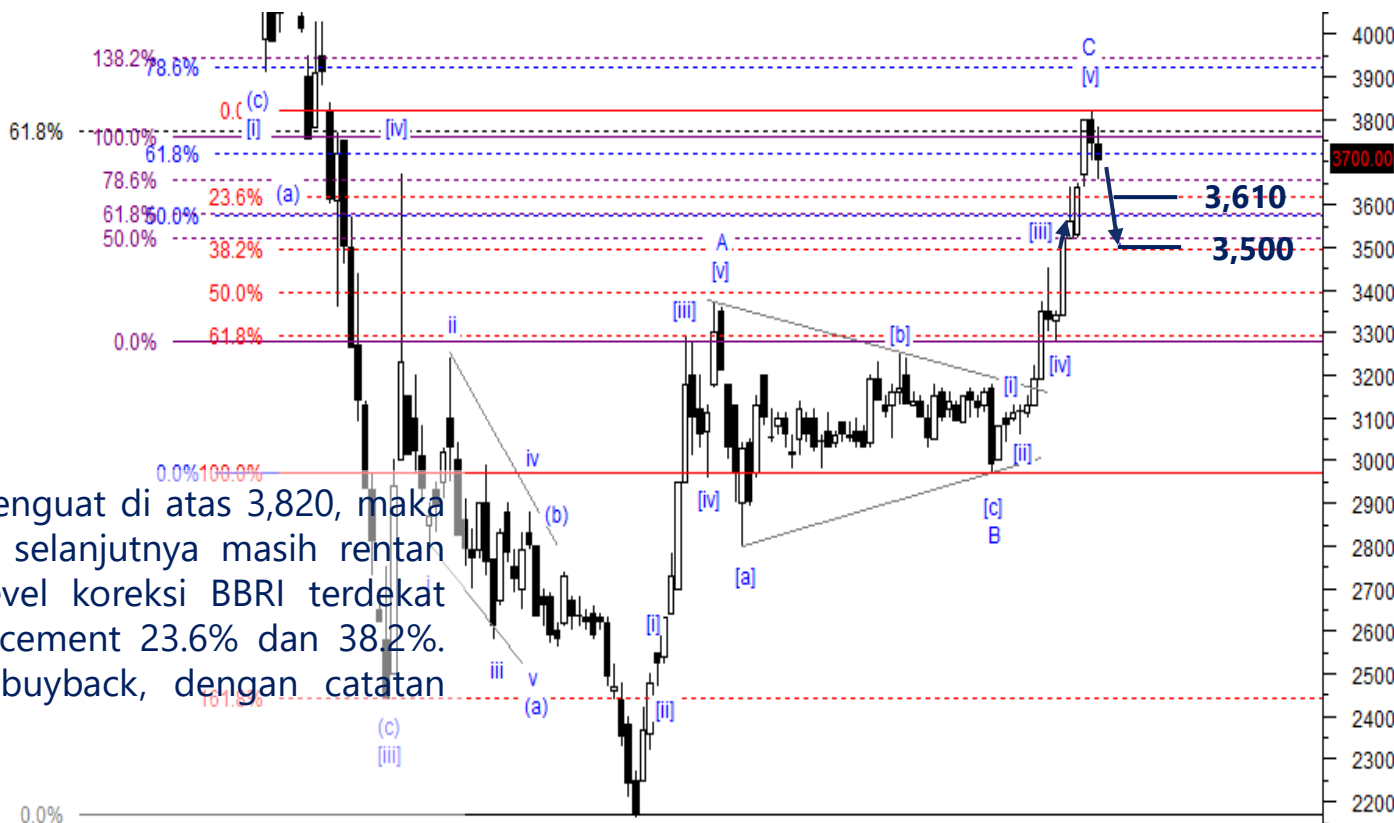
**Target Price: 820, 855**

**Stoploss: below 690**

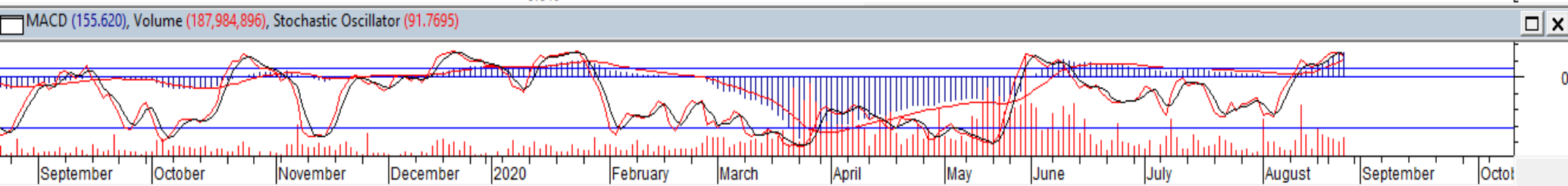




# BBRI – Sell on Strength



**Sell on Strength: 3,700-3,750**





**Thendra Crisnanda – Head of Institution Research**  
[thendra.crisnanda@mncgroup.com](mailto:thendra.crisnanda@mncgroup.com)  
Investment Strategy  
Ext. 52162



**T. Herditya Wicaksana – Technical Analyst**  
[herditya.wicaksana@mncgroup.com](mailto:herditya.wicaksana@mncgroup.com)  
Technical Specialist – Elliott Wave  
Ext. 52150



**Victoria Venny – Research Analyst**  
[victoria.nawang@mncgroup.com](mailto:victoria.nawang@mncgroup.com)  
Telco, Toll Road, Logistic, Consumer, Poultry  
Ext. 52236



**Catherina Vincentia – Research Associate**  
[catherina.vincentia@mncgroup.com](mailto:catherina.vincentia@mncgroup.com)  
Ext. 52306



**Muhamad Rudy Setiawan – Research Analyst**  
[muhamad.setiawan@mncgroup.com](mailto:muhamad.setiawan@mncgroup.com)  
Construction, Property, Oil and Gas  
Ext. 52317

**Disclaimer :** MNCS Daily Scope Wave has been issued by PT MNC Sekuritas, It may not be reproduced or further distributed or published, in whole or in part, for any purpose. PT MNC Sekuritas has based this document on information obtained from sources it believes to be reliable but which it has not independently verified; PT MNC Sekuritas makes no guarantee, representation or warranty and accepts no responsibility to liability as to its accuracy or completeness. Expression of opinion herein are those of the research department only and are subject to change without notice. This document is not and should not be construed as an offer or the solicitation of an offer to purchase or subscribe or sell any investment. PT MNC Sekuritas and its affiliates and/or their offices, directors and employees may own or have positions in any investment mentioned herein or any investment related thereto and may from time to time add to or dispose of any such investment. PT MNC Sekuritas and its affiliates may act as market maker or have assumed an underwriting position in the securities of companies discusses herein (or investment related thereto) and may sell them to or buy them from customers on a principal basis and may also perform or seek to perform investment banking or underwriting services for or relating to those companies.