



# Daily SCOPE

Wave

**MNC Financial Center Lt. 14 – 16**

Jl. Kebon Sirih No. 21 – 27, Jakarta 10340, Indonesia

[www.mncsekuritas.id](http://www.mncsekuritas.id)

a member of MNC Group

**31 Agustus 2020**

Institution Research Team | [herditya.wicaksana@mncgroup.com](mailto:herditya.wicaksana@mncgroup.com) | +6221 29080 3111 Ext.52150

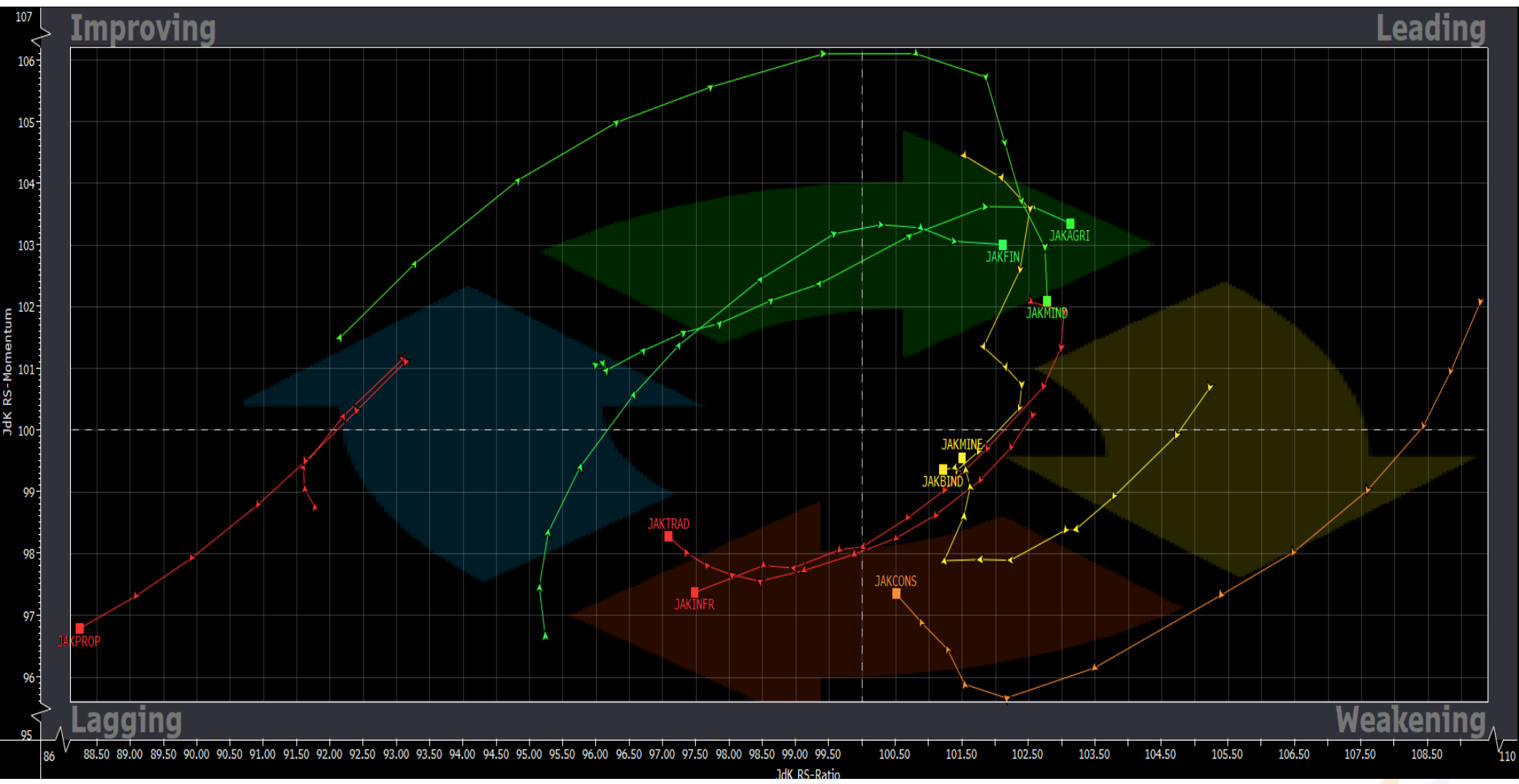
## Jakarta Composite Index (JCI) *short term (1-2 days) bearish*

*Pergerakan IHSG sudah terbatas oleh MA200 di area 5,370-5,390. Tetap waspada pergerakan IHSG selanjutnya meskipun ada potensi IHSG menuju ke fibo cluster di 5,400.*

### Top picks of the Day :

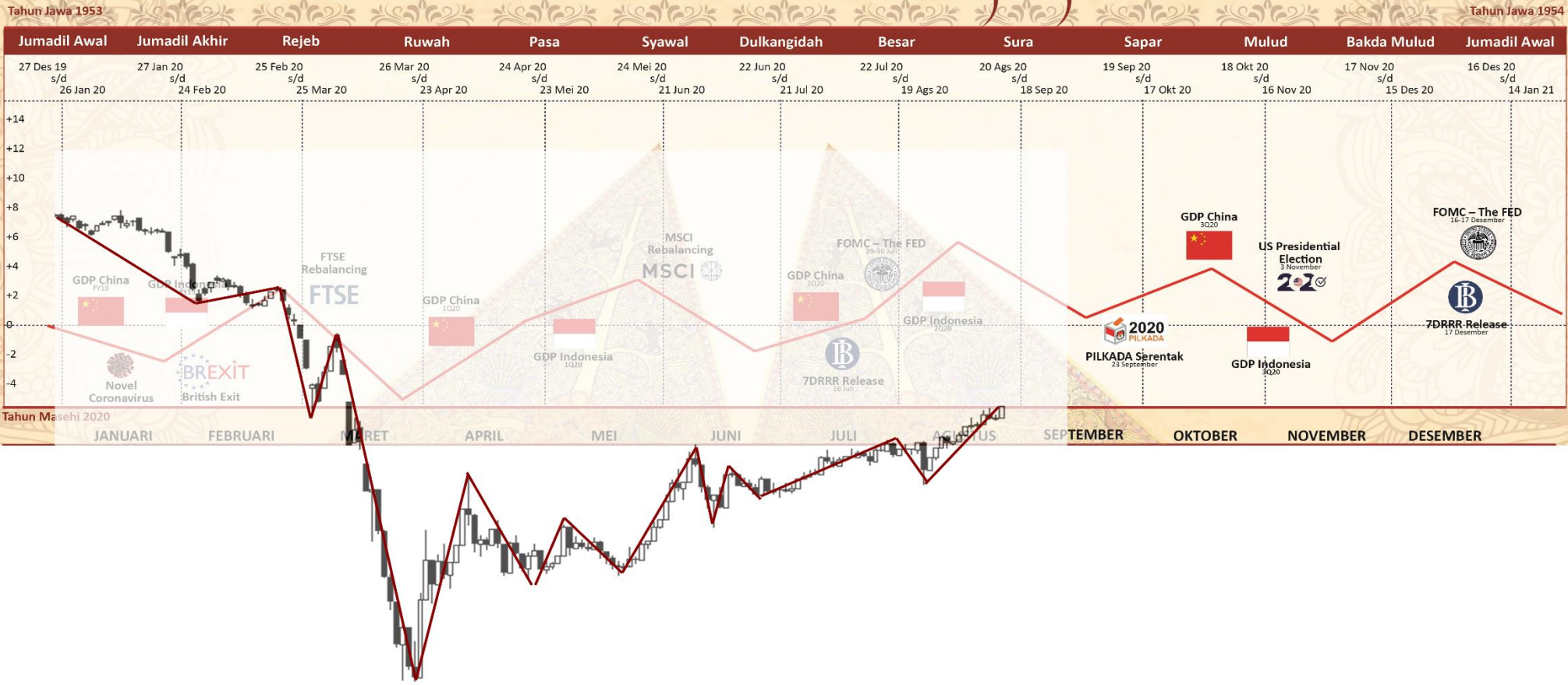
Stock	Close Price	Recommendation	Tactical Moves
WIKA	1,295	Buy on Weakness	Kami memperkirakan kenaikan WIKA merupakan bagian dari wave 2 dari wave (C), setelah terkonfirmasi terbentuk wave 2, maka WIKA akan berpotensi berbalik menguat kembali.
ASII	5,325	Spec Buy	Selama tidak terkoreksi ke bawah 5,250, maka pergerakan ASII saat ini sedang berada pada bagian dari wave (c) dari wave [v] dari wave C.
LSIP	980	Buy on Weakness	Saat ini LSIP sedang berada di awal wave (c) dari wave [v] dari wave C.
ANTM	820	Sell on Strength	Selama ANTM belum mampu menguat dan menembus resistancenya di 865, maka pergerakan ANTM kemarin diperkirakan merupakan bagian dari wave [b] dari wave A.

# RRG – Relative Rotation Graph



# MNCS Primbon Index

## Primbon Index 2020



# JCI – Exhaustion?

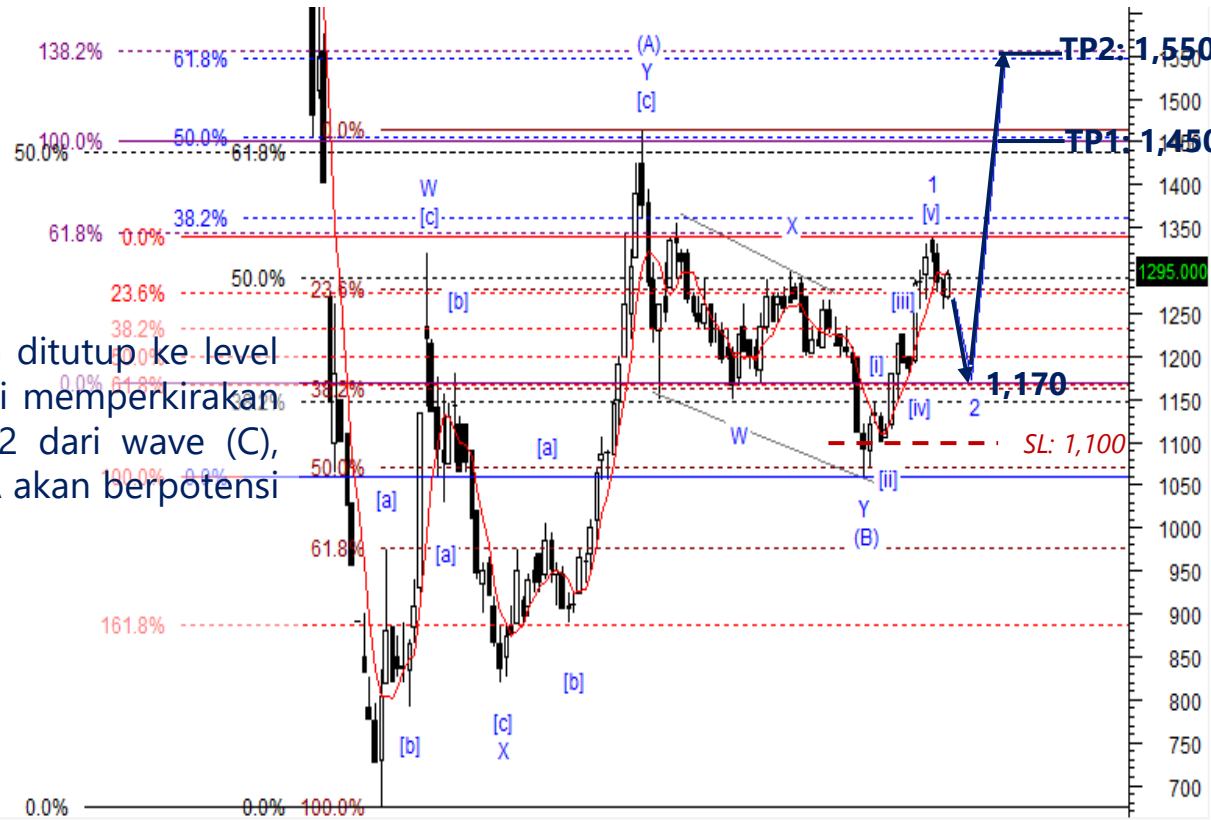
Menutup pekan kemarin (28/8), IHSG terkoreksi 0,5% dan ditutup ke level 5,346. Meskipun terdapat fibonacci cluster yang terletak pada level 5,400 dan masih ada potensi untuk IHSG mengarah ke area tersebut, namun pergerakan IHSG saat ini sudah berada di akhir kenaikan dari wave [c] dari wave 5, sehingga IHSG rentan terkoreksi ke area 5,200-5,270 sebagai area koreksi terdekatnya.

**Support: 5,260, 5,220**

**Resistance: 5,380, 5,400**



# WIKA – Buy on Weakness



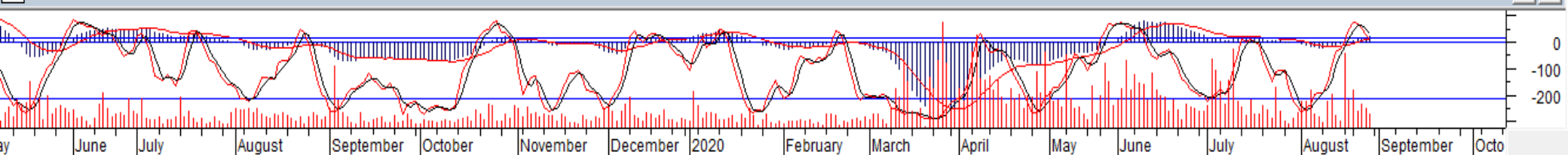
Pergerakan WIKA kemarin (28/8) menguat 2% dan ditutup ke level 1,295 dengan tekanan beli yang cukup besar. Kami memperkirakan kenaikan tersebut merupakan bagian dari wave 2 dari wave (C), setelah terkonfirmasi terbentuk wave 2, maka WIKA akan berpotensi berbalik menguat kembali.

**Buy on Weakness: 1,170-1,270**

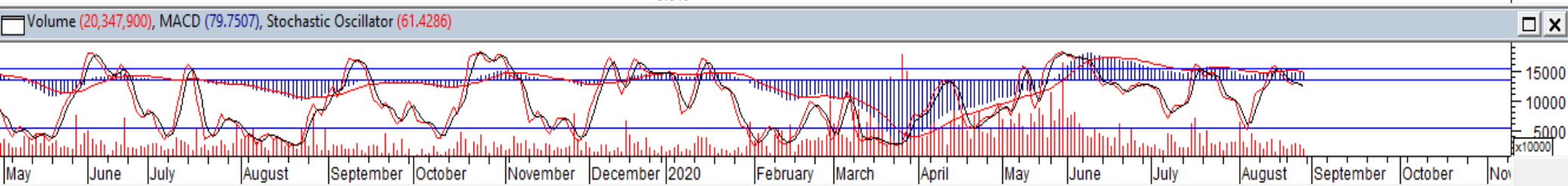
**Target Price: 1,450, 1,550**

**Stoploss: below 1,100**

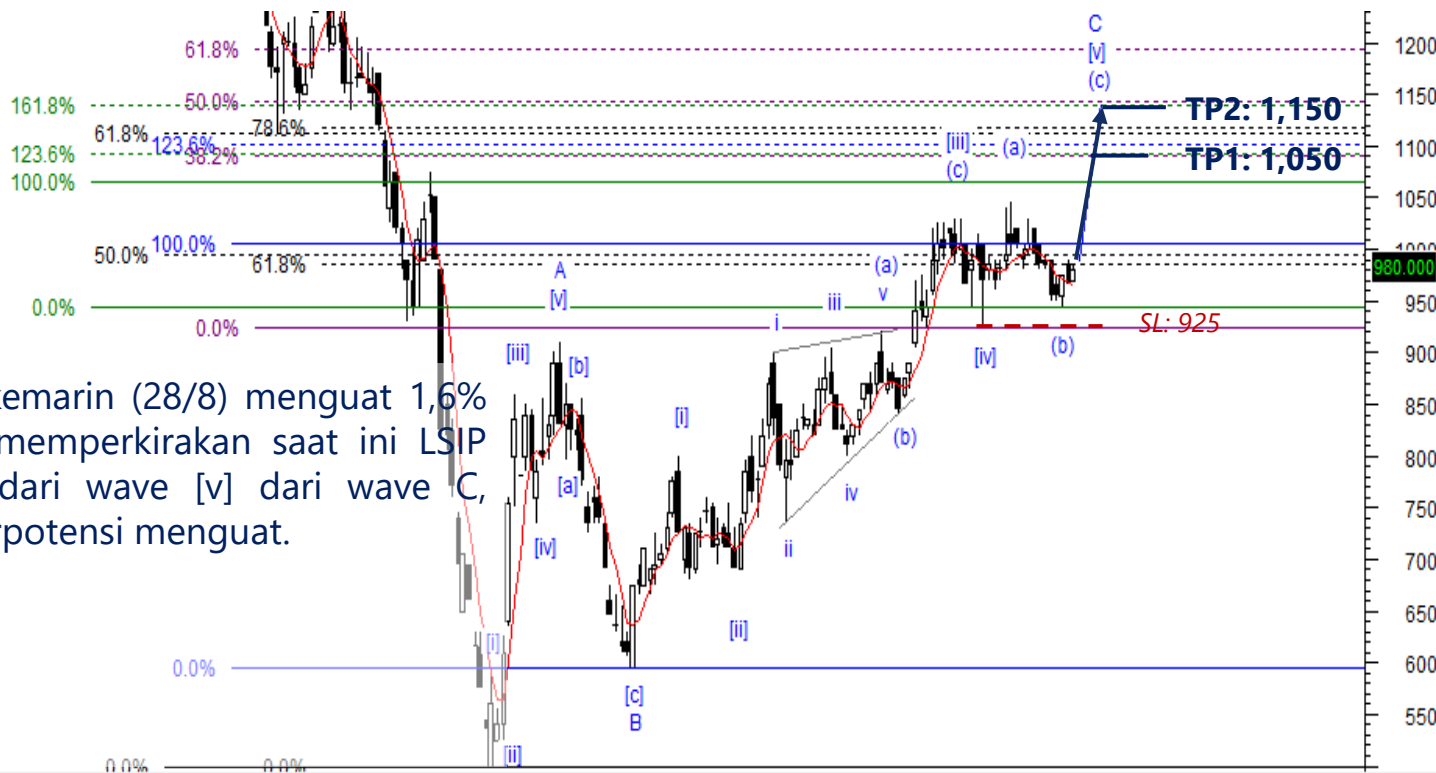
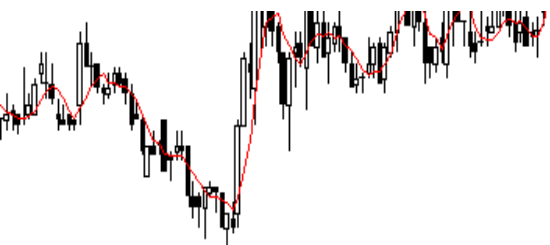
MACD (24.4559), Stochastic Oscillator (78.4810), Volume (18,892,100)



# ASII – Spec Buy

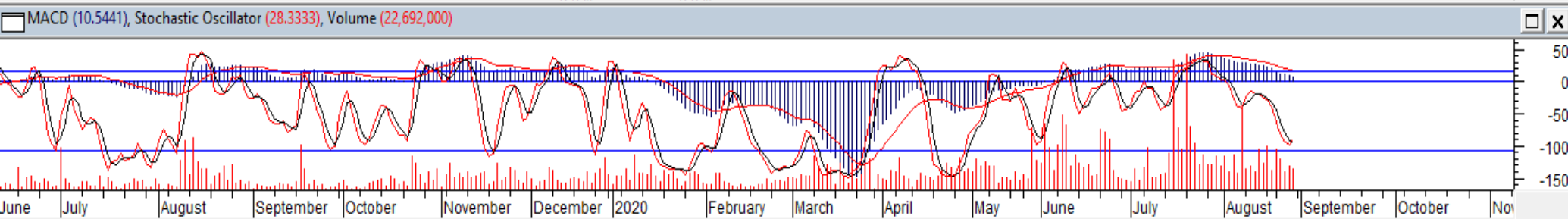


# LSIP – Buy on Weakness



Pergerakan LSIP pada akhir pekan kemarin (28/8) menguat 1,6% namun terbatas oleh MA20. Kami memperkirakan saat ini LSIP sedang berada di awal wave (c) dari wave [v] dari wave C, sehingga diperkirakan LSIP masih berpotensi menguat.

- Buy on Weakness: 960-980**
- Target Price: 1,050, 1,150**
- Stoploss: below 925**



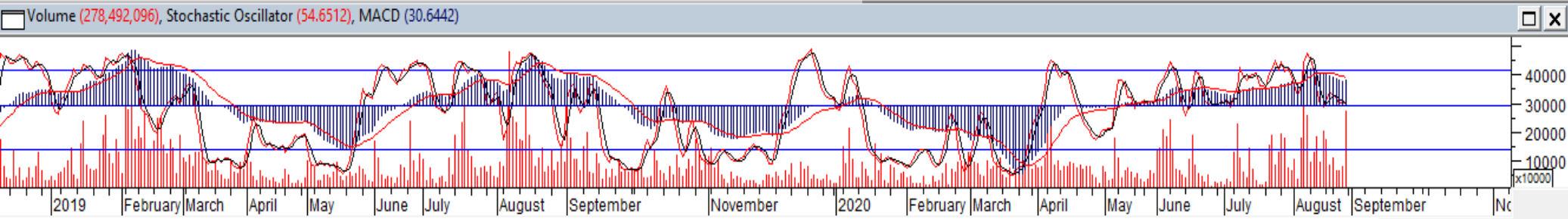


# ANTM – Sell on Strength



Selama ANTM belum mampu menguat dan menembus resistancinya di 865, maka penguatan ANTM kemarin (28/8) diperkirakan merupakan bagian dari wave [b] dari wave A. Hal ini berarti ANTM masih cenderung rentan terkoreksi dengan level koreksi di 740 dan idealnya di 665.

**Sell on Strength: 820-850**





**Thendra Crisnanda – Head of Institution Research**  
[thendra.crisnanda@mncgroup.com](mailto:thendra.crisnanda@mncgroup.com)  
Investment Strategy  
Ext. 52162



**T. Herditya Wicaksana – Technical Analyst**  
[herditya.wicaksana@mncgroup.com](mailto:herditya.wicaksana@mncgroup.com)  
Technical Specialist – Elliott Wave  
Ext. 52150



**Victoria Venny – Research Analyst**  
[victoria.nawang@mncgroup.com](mailto:victoria.nawang@mncgroup.com)  
Telco, Toll Road, Logistic, Consumer, Poultry  
Ext. 52236



**Catherina Vincentia – Research Associate**  
[catherina.vincentia@mncgroup.com](mailto:catherina.vincentia@mncgroup.com)  
Ext. 52306



**Muhamad Rudy Setiawan – Research Analyst**  
[muhamad.setiawan@mncgroup.com](mailto:muhamad.setiawan@mncgroup.com)  
Construction, Property, Oil and Gas  
Ext. 52317

**Disclaimer :** MNCS Daily Scope Wave has been issued by PT MNC Sekuritas, It may not be reproduced or further distributed or published, in whole or in part, for any purpose. PT MNC Sekuritas has based this document on information obtained from sources it believes to be reliable but which it has not independently verified; PT MNC Sekuritas makes no guarantee, representation or warranty and accepts no responsibility to liability as to its accuracy or completeness. Expression of opinion herein are those of the research department only and are subject to change without notice. This document is not and should not be construed as an offer or the solicitation of an offer to purchase or subscribe or sell any investment. PT MNC Sekuritas and its affiliates and/or their offices, directors and employees may own or have positions in any investment mentioned herein or any investment related thereto and may from time to time add to or dispose of any such investment. PT MNC Sekuritas and its affiliates may act as market maker or have assumed an underwriting position in the securities of companies discusses herein (or investment related thereto) and may sell them to or buy them from customers on a principal basis and may also perform or seek to perform investment banking or underwriting services for or relating to those companies.