



Daily SCOPE

Wave

MNC Financial Center Lt. 14 – 16

Jl. Kebon Sirih No. 21 – 27, Jakarta 10340, Indonesia

www.mncsekuritas.id

a member of MNC Group

21 Februari 2020

Institution Research Team | herditya.wicaksana@mncgroup.com | +6221 29080 3111 Ext.52150

Jakarta Composite Index (JCI) *short term (1-2 days) bearish*

Kembali ditutup menguat ke level 5,942, IHSG kami perkirakan rentan terkoreksi ke area 5,860-5,905 dalam jangka pendek, namun skenario ini berlaku selama IHSG tidak berlanjut terkoreksi menembus 5,842.

Top picks of the Day :

Stock	Close Price	Recommendation	Tactical Moves
MEDC	715	Buy on Weakness	MEDC masih berpotensi untuk melanjutkan penguatannya karena posisi MEDC saat ini berada di awal wave [iii].
TINS	700	Buy on Weakness	Selama koreksi TINS tidak kembali ke bawah 655, maka kami perkirakan TINS saat ini sedang berada pada awal dari wave (B).
EXCL	2,680	Buy on Weakness	Koreksi EXCL merupakan bagian dari wave [b] dari wave (B), dimana EXCL masih rentan untuk terkoreksi kembali namun relatif terbatas.
JPFA	1,590	Sell on Strength	Pergerakan JPFA saat ini sudah berada di akhir wave (c) dari wave [b], dimana penguatan JPFA sudah cenderung terbatas dan rentan untuk terkoreksi.

JCI – Confirmation Needed



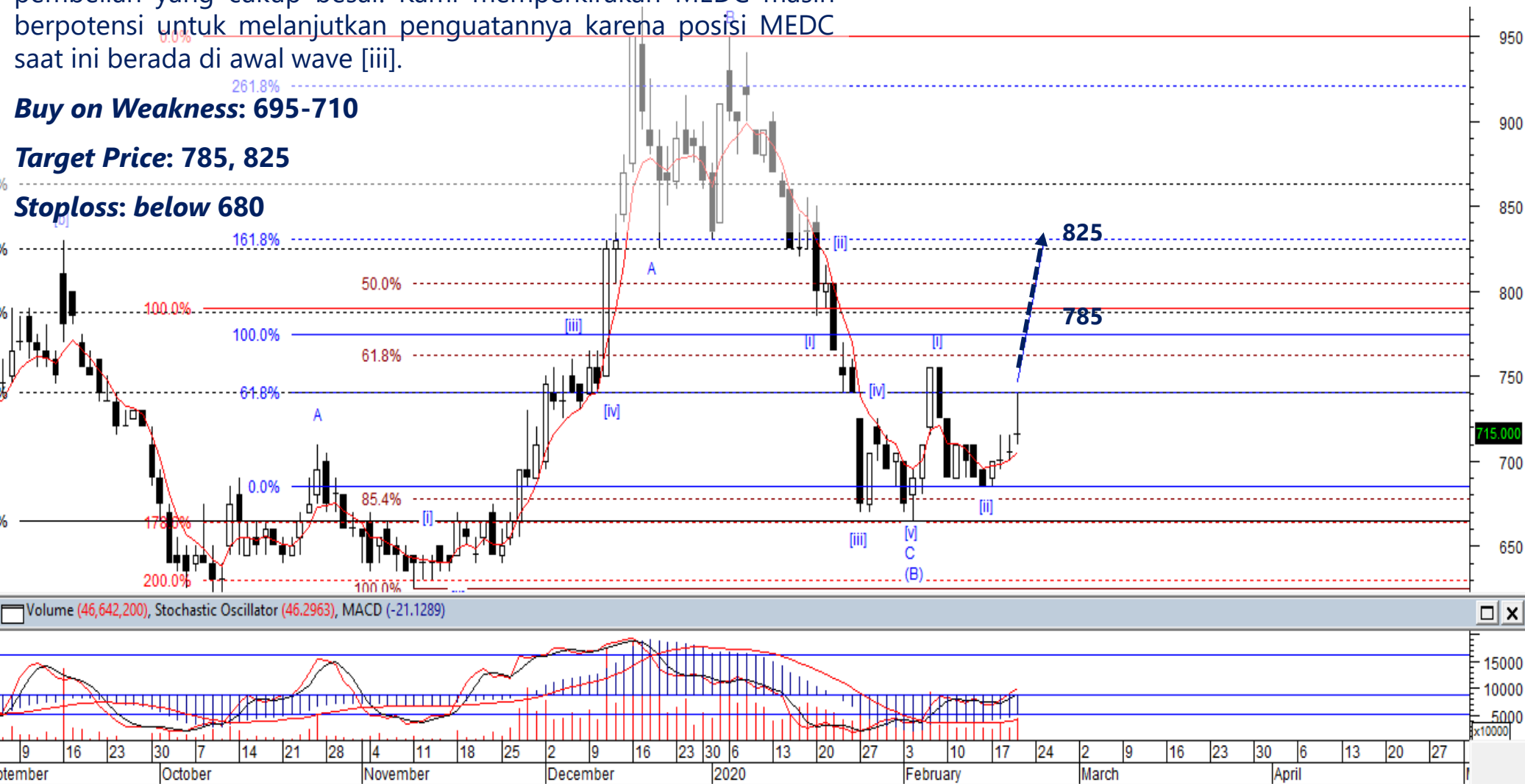
MEDC – Buy on Weakness

Kemarin (20/2), MEDC ditutup menguat 1,4% diikuti volume pembelian yang cukup besar. Kami memperkirakan MEDC masih berpotensi untuk melanjutkan penguatannya karena posisi MEDC saat ini berada di awal wave [iii].

Buy on Weakness: 695-710

Target Price: 785, 825

Stoploss: below 680



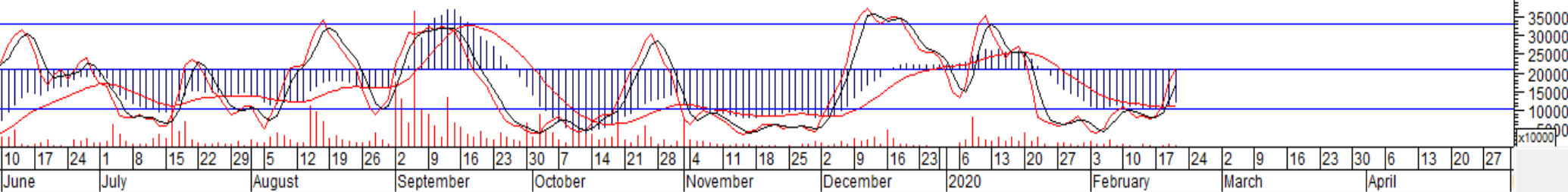
TINS – Buy on Weakness



Pergerakan TINS tertahan oleh MA20, sehingga kami perkirakan TINS akan terkoreksi terlebih dahulu dalam jangka pendek. Selama koreksi TINS tidak kembali ke bawah 655, maka kami perkirakan TINS saat ini sedang berada pada awal dari wave (B).

- Buy on Weakness: 680-700**
- Target Price: 800, 880**
- Stoploss: below 650**

Volume (7,327,800), MACD (-27.1925), Stochastic Oscillator (49.1228)



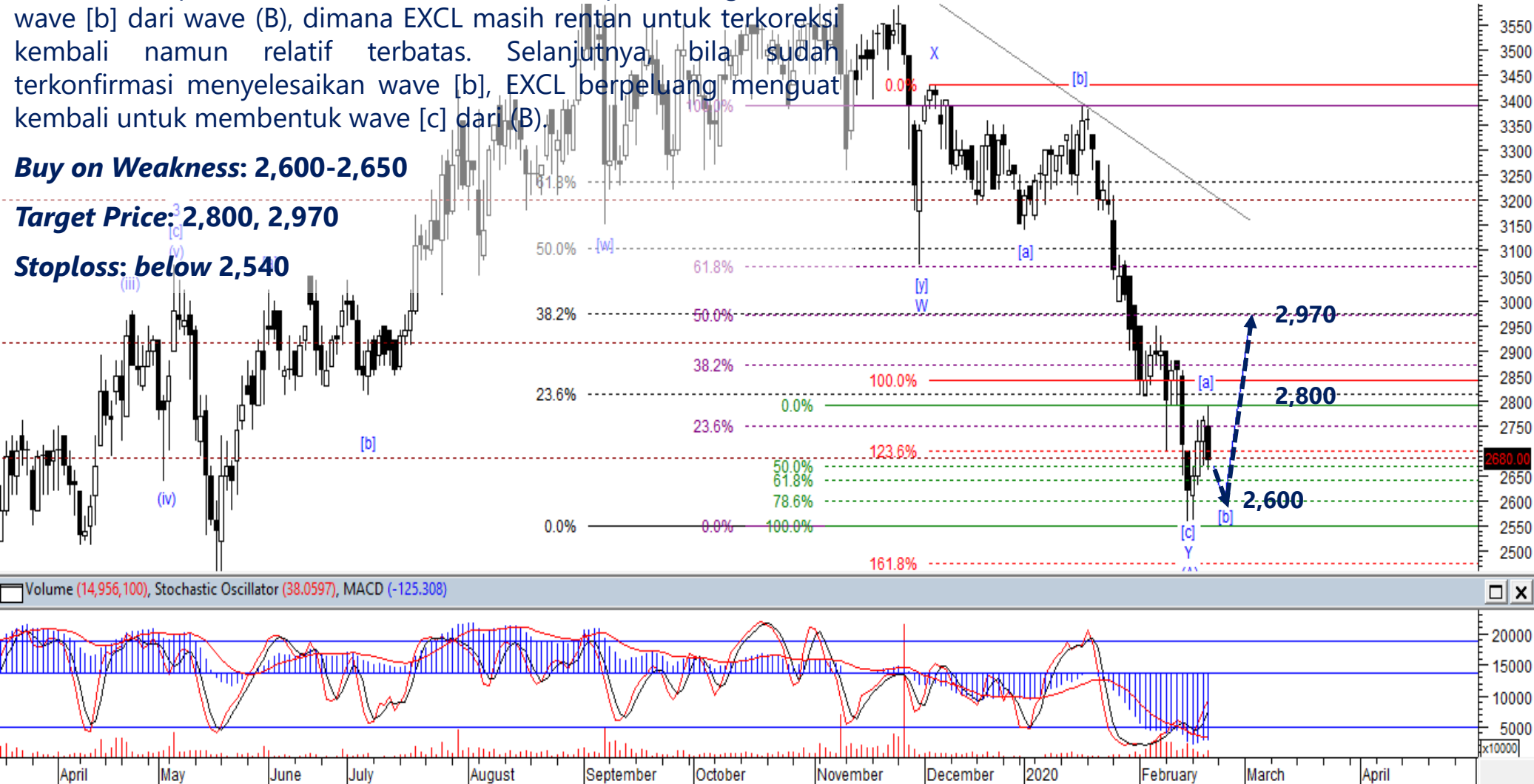
EXCL – Buy on Weakness

Pada perdagangan kemarin (20/2), EXCL terkoreksi 2,9% ke level 2,680. Kami perkirakan koreksi tersebut merupakan bagian dari wave [b] dari wave (B), dimana EXCL masih rentan untuk terkoreksi kembali namun relatif terbatas. Selanjutnya, bila sudah terkonfirmasi menyelesaikan wave [b], EXCL berpotensi menguat kembali untuk membentuk wave [c] dari (B).

Buy on Weakness: 2,600-2,650

Target Price: 2,800, 2,970

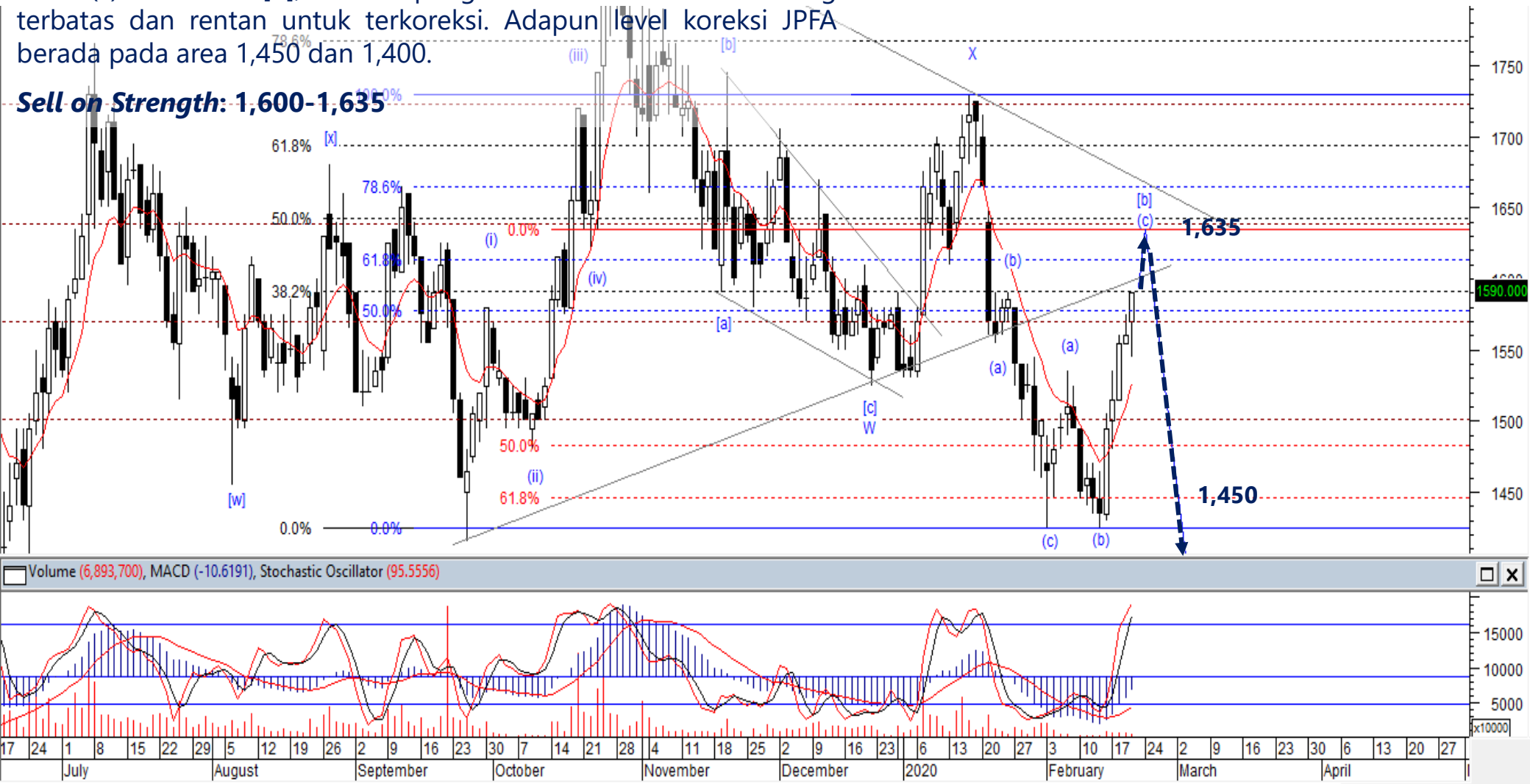
Stoploss: below 2,540



JPFA – Sell On Strength

Kami perkirakan pergerakan JPFA saat ini sudah berada di akhir wave (c) dari wave [b], dimana penguatan JPFA sudah cenderung terbatas dan rentan untuk terkoreksi. Adapun level koreksi JPFA berada pada area 1,450 dan 1,400.

Sell on Strength: 1,600-1,635





Thendra Crisnanda – Head of Institution Research
thendra.crisnanda@mncgroup.com
Investment Strategy
Ext. 52162



Victoria Venny – Research Analyst
victoria.nawang@mncgroup.com
Telco, Toll Road, Logistic, Consumer, Poultry
Ext. 52236



T. Herditya Wicaksana – Technical Analyst
herditya.wicaksana@mncgroup.com
Technical Specialist – Elliott Wave
Ext. 52150



Muhamad Rudy Setiawan – Research Analyst
muhamad.setiawan@mncgroup.com
Construction, Property, Oil and Gas
Ext. 52317



Catherina Vincentia – Research Associate
catherina.vincentia@mncgroup.com
Ext. 52306



Jessica Sukimaja – Research Associate
jessica.sukimaja@mncgroup.com
Ext. 52307

Disclaimer : MNCS Daily Scope Wave has been issued by PT MNC Sekuritas, It may not be reproduced or further distributed or published, in whole or in part, for any purpose. PT MNC Sekuritas has based this document on information obtained from sources it believes to be reliable but which it has not independently verified; PT MNC Sekuritas makes no guarantee, representation or warranty and accepts no responsibility to liability as to its accuracy or completeness. Expression of opinion herein are those of the research department only and are subject to change without notice. This document is not and should not be construed as an offer or the solicitation of an offer to purchase or subscribe or sell any investment. PT MNC Sekuritas and its affiliates and/or their offices, directors and employees may own or have positions in any investment mentioned herein or any investment related thereto and may from time to time add to or dispose of any such investment. PT MNC Sekuritas and its affiliates may act as market maker or have assumed an underwriting position in the securities of companies discussed herein (or investment related thereto) and may sell them to or buy them from customers on a principal basis and may also perform or seek to perform investment banking or underwriting services for or relating to those companies.