



Daily SCOPE

Wave

MNC Financial Center Lt. 14 – 16

Jl. Kebon Sirih No. 21 – 27, Jakarta 10340, Indonesia

www.mncsekuritas.id

a member of MNC Group

24 Februari 2020

Institution Research Team | herditya.wicaksana@mncgroup.com | +6221 29080 3111 Ext.52150

Jakarta Composite Index (JCI) *short term (1-2 days) bearish*

Secara weekly IHSG belum mampu bertahan di atas area 5,900, tetap waspadai level 5,842. Apabila ke depannya IHSG menembus level tersebut, maka IHSG berpotensi menuju 5,720-5,800.

Top picks of the Day :

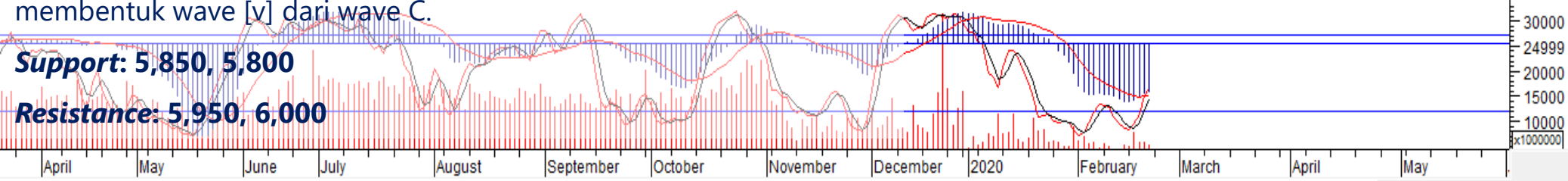
Stock	Close Price	Recommendation	Tactical Moves
WIKA	2,010	Buy on Weakness	Saat ini WIKA sedang berada di wave (ii) dari wave [c] dari wave 3. Dimana WIKA akan cenderung terkoreksi dalam jangka pendek dahulu.
MAPI	835	Buy on Weakness	Saat ini MAPI sedang berada di akhir wave (v) dari wave [iii], dimana MAPI berpotensi menguat dalam jangka pendek untuk membentuk wave [iv].
BBTN	1,870	Buy on Weakness	Pergerakan BBTN saat ini berada pada awal wave [b]. Dimana BBTN masih berpotensi terkoreksi.
CPIN	6,575	Sell on Strength	Pergerakan CPIN sedang berada di awal wave [c] dari wave Y dari wave (B).

JCI – Will Break 5,842?



Menutup pekan lalu (21/2), IHSG ditutup terkoreksi 1% ke level 5,882 dan secara weekly IHSG tidak mampu ditutup di atas area 5,900. Waspada! level 5,842, apabila IHSG menembus level tersebut, pergerakan IHSG selanjutnya akan menuju area 5,720-5,800 sekaligus membentuk wave [y] dari wave C.

Support: 5,850, 5,800
Resistance: 5,950, 6,000



WIKA – Buy on Weakness

Jumat lalu (21/2), WIKA ditutup terkoreksi 1,5% ke level 2,010. Kami memperkirakan saat ini WIKA sedang berada di wave (ii) dari wave [c] dari wave 3. Dimana WIKA akan cenderung terkoreksi dalam jangka pendek dahulu, setelahnya WIKA berpotensi berbalik arah untuk membentuk wave (iii).

Buy on Weakness: 1,955-2,000

Target Price: 2,130, 2,210

Stoploss: below 1,830



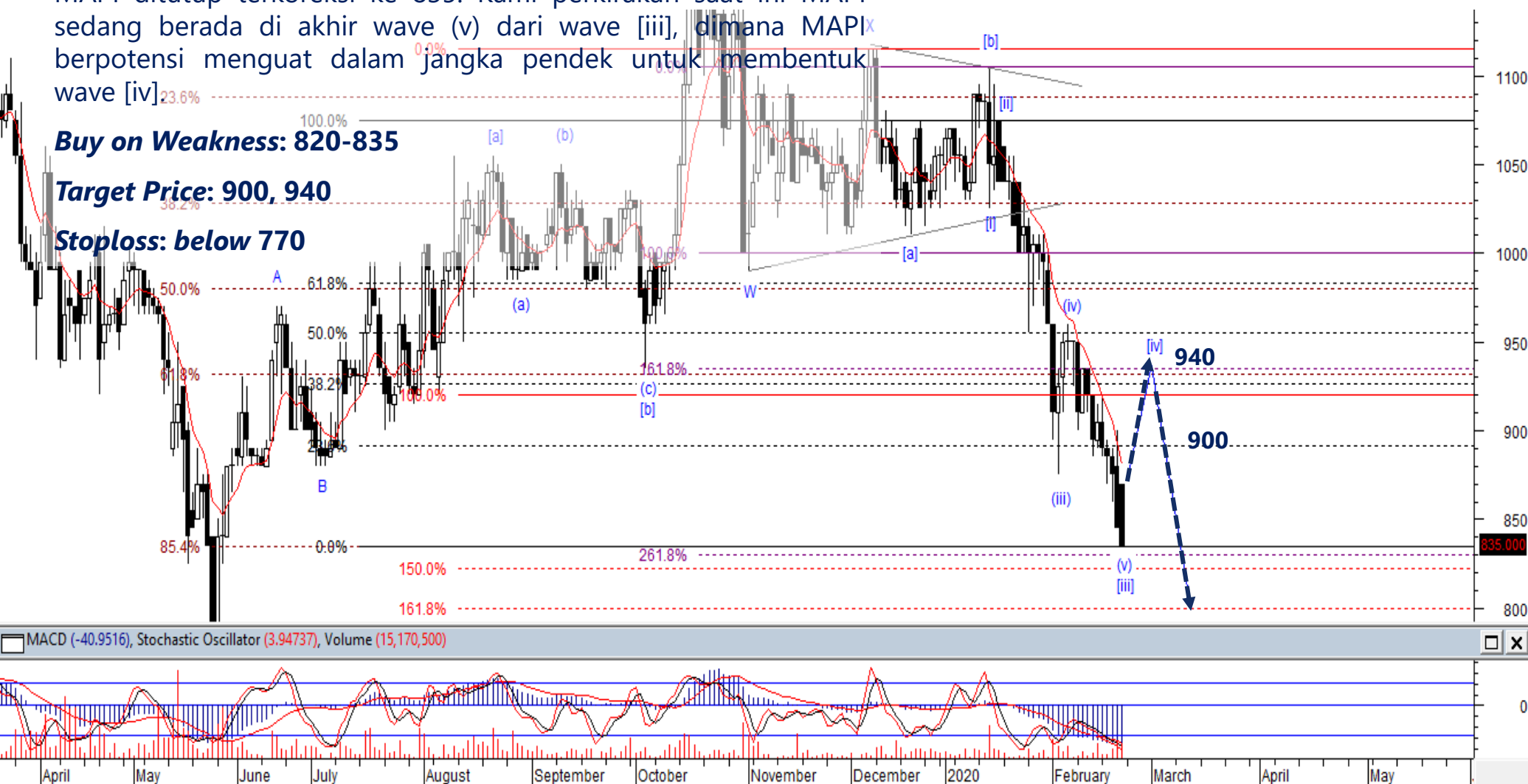
MAPI – Buy on Weakness

Meskipun tekanan jual tidak sebesar hari sebelumnya, akan tetapi MAPI ditutup terkoreksi ke 835. Kami perkirakan saat ini MAPI sedang berada di akhir wave (v) dari wave [iii], dimana MAPI berpotensi menguat dalam jangka pendek untuk membentuk wave [iv]

Buy on Weakness: 820-835

Target Price: 900, 940

Stoploss: below 770



BBTN – Buy on Weakness

Terkoreksi 2,6% pada perdagangan Jumat (21/2), membuat pergerakan BBTN saat ini berada pada awal wave [b]. Dimana BBTN masih berpotensi terkoreksi untuk membentuk wave [b], namun setelah wave [b] terkonfirmasi selesai, maka BBTN akan berbalik menguat membentuk wave [c].

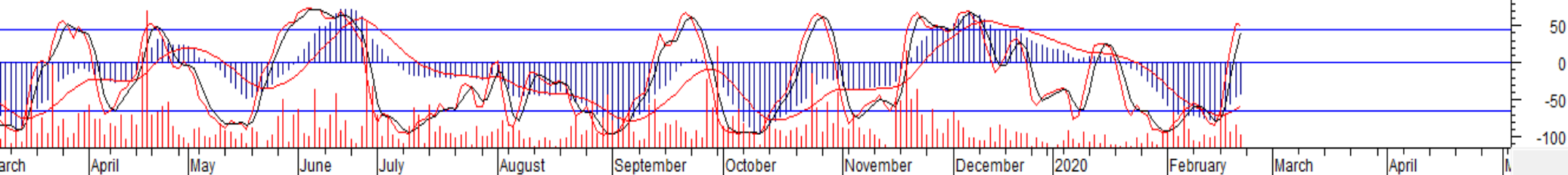
Buy on Weakness: 1,775-1,810

Target Price: 2,040, 2,140

Stoploss: below 1,670



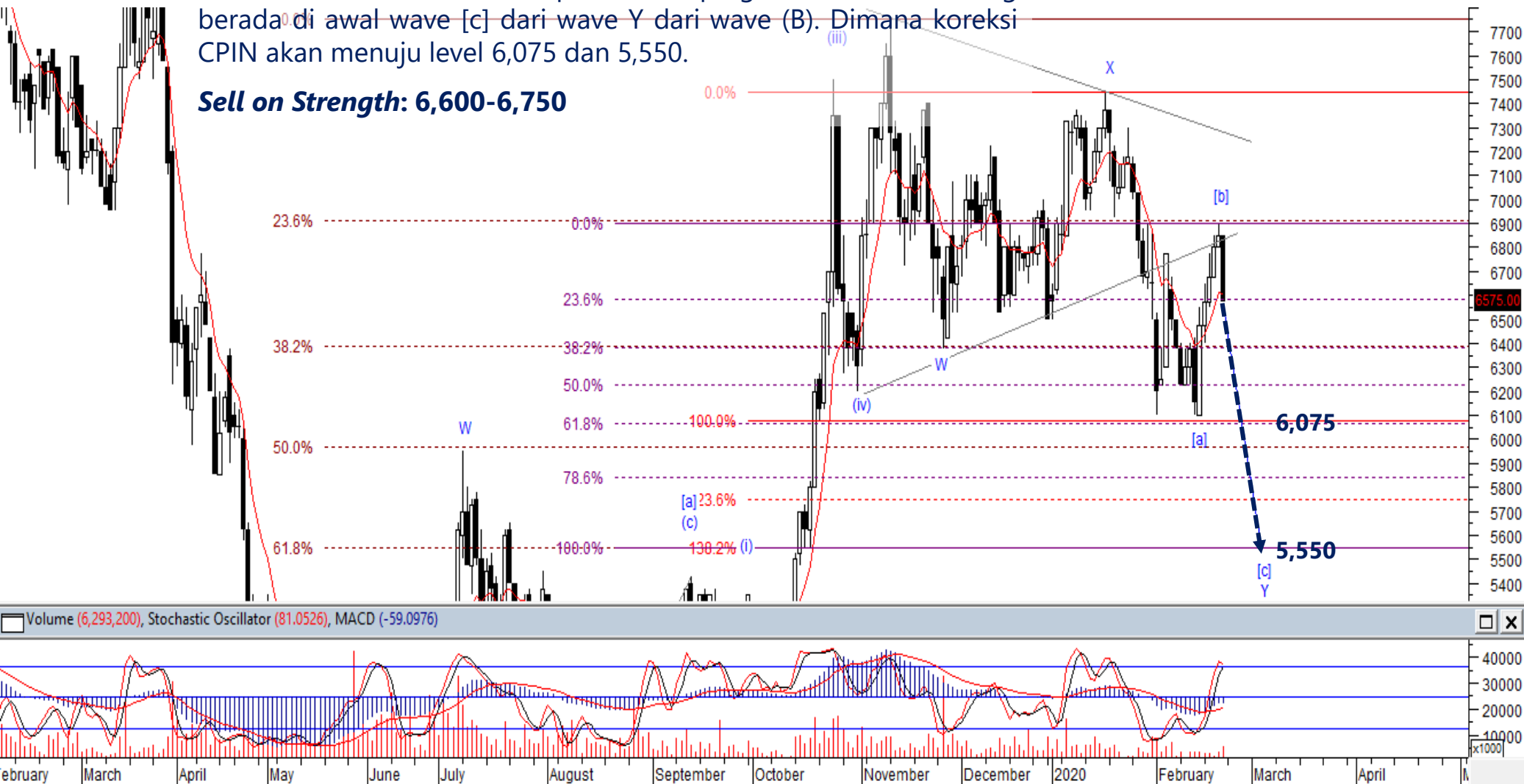
MACD (-43.0946), Stochastic Oscillator (83.5443), Volume (15,009,500)



CPIN – Sell On Strength

Jumat lalu (21/2), CPIN terkoreksi 4% ke level 6,575 dan koreksinya tertahan oleh MA20. Kami perkirakan pergerakan CPIN sedang berada di awal wave [c] dari wave Y dari wave (B). Dimana koreksi CPIN akan menuju level 6,075 dan 5,550.

Sell on Strength: 6,600-6,750



Volume (6,293,200), Stochastic Oscillator (81.0526), MACD (-59.0976)

February March April May June July August September October November December 2020 February March April



Thendra Crisnanda – Head of Institution Research
thendra.crisnanda@mncgroup.com
Investment Strategy
Ext. 52162



Victoria Venny – Research Analyst
victoria.nawang@mncgroup.com
Telco, Toll Road, Logistic, Consumer, Poultry
Ext. 52236



T. Herditya Wicaksana – Technical Analyst
herditya.wicaksana@mncgroup.com
Technical Specialist – Elliott Wave
Ext. 52150



Muhamad Rudy Setiawan – Research Analyst
muhamad.setiawan@mncgroup.com
Construction, Property, Oil and Gas
Ext. 52317



Catherina Vincentia – Research Associate
catherina.vincentia@mncgroup.com
Ext. 52306



Jessica Sukimaja – Research Associate
jessica.sukimaja@mncgroup.com
Ext. 52307

Disclaimer : MNCS Daily Scope Wave has been issued by PT MNC Sekuritas, It may not be reproduced or further distributed or published, in whole or in part, for any purpose. PT MNC Sekuritas has based this document on information obtained from sources it believes to be reliable but which it has not independently verified; PT MNC Sekuritas makes no guarantee, representation or warranty and accepts no responsibility to liability as to its accuracy or completeness. Expression of opinion herein are those of the research department only and are subject to change without notice. This document is not and should not be construed as an offer or the solicitation of an offer to purchase or subscribe or sell any investment. PT MNC Sekuritas and its affiliates and/or their offices, directors and employees may own or have positions in any investment mentioned herein or any investment related thereto and may from time to time add to or dispose of any such investment. PT MNC Sekuritas and its affiliates may act as market maker or have assumed an underwriting position in the securities of companies discussed herein (or investment related thereto) and may sell them to or buy them from customers on a principal basis and may also perform or seek to perform investment banking or underwriting services for or relating to those companies.