



# Daily SCOPE Wave

**MNC Financial Center Lt. 16**

Jl. Kebon Sirih No. 21 – 27, Jakarta 10340, Indonesia

[www.mncsekuritas.id](http://www.mncsekuritas.id)

a member of MNC Group

Institution Research Team | [herditya.wicaksana@mncgroup.com](mailto:herditya.wicaksana@mncgroup.com) | +6221 29080 3111 Ext.52150

**1 Oktober 2020**

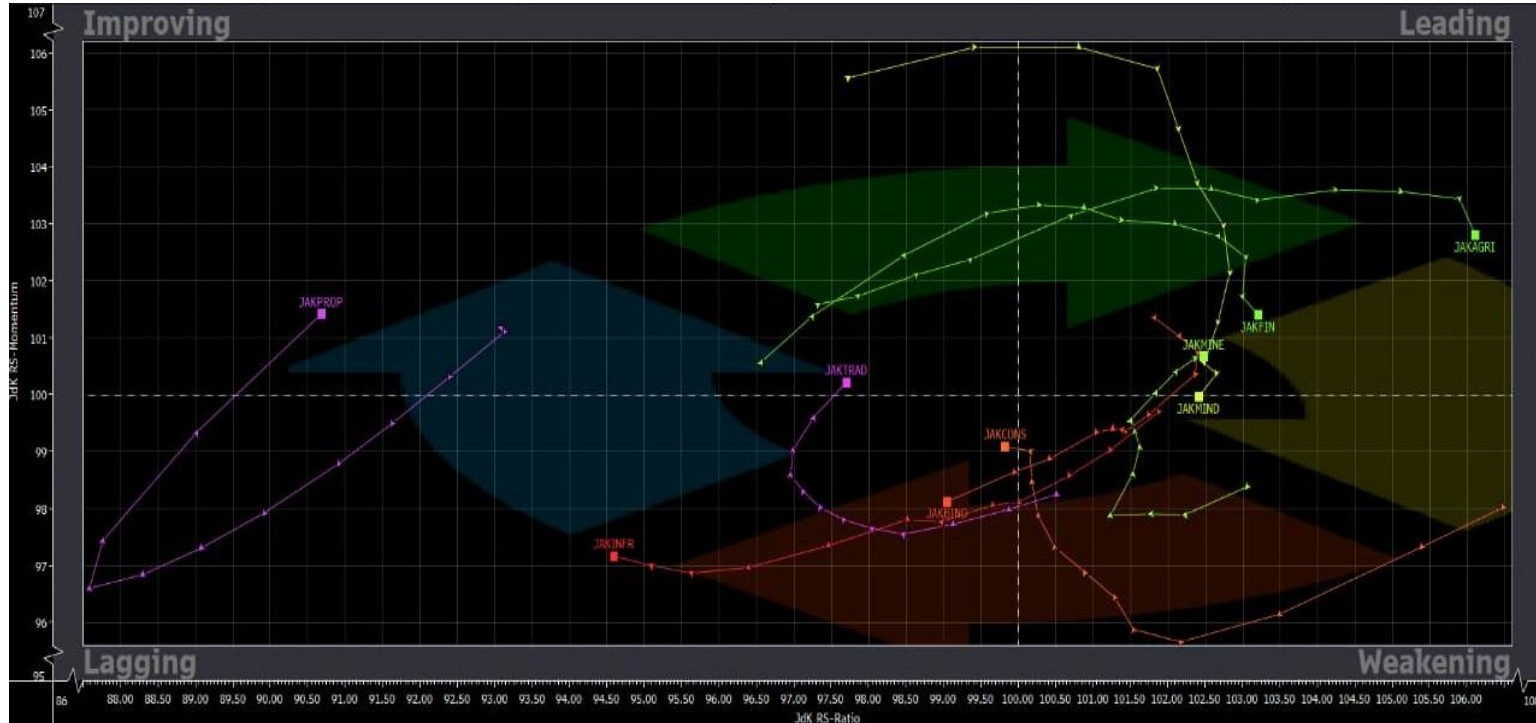
## Jakarta Composite Index (JCI) *short term (1-2 days) bearish*

*Perhatikan support terdekat IHSG yang berada di area 4,820 dan 4,753. Selama IHSG masih berada di atas kedua level tersebut, maka kami perkirakan IHSG masih berpeluang menguat dalam jangka pendek.*

### Top picks of the Day :

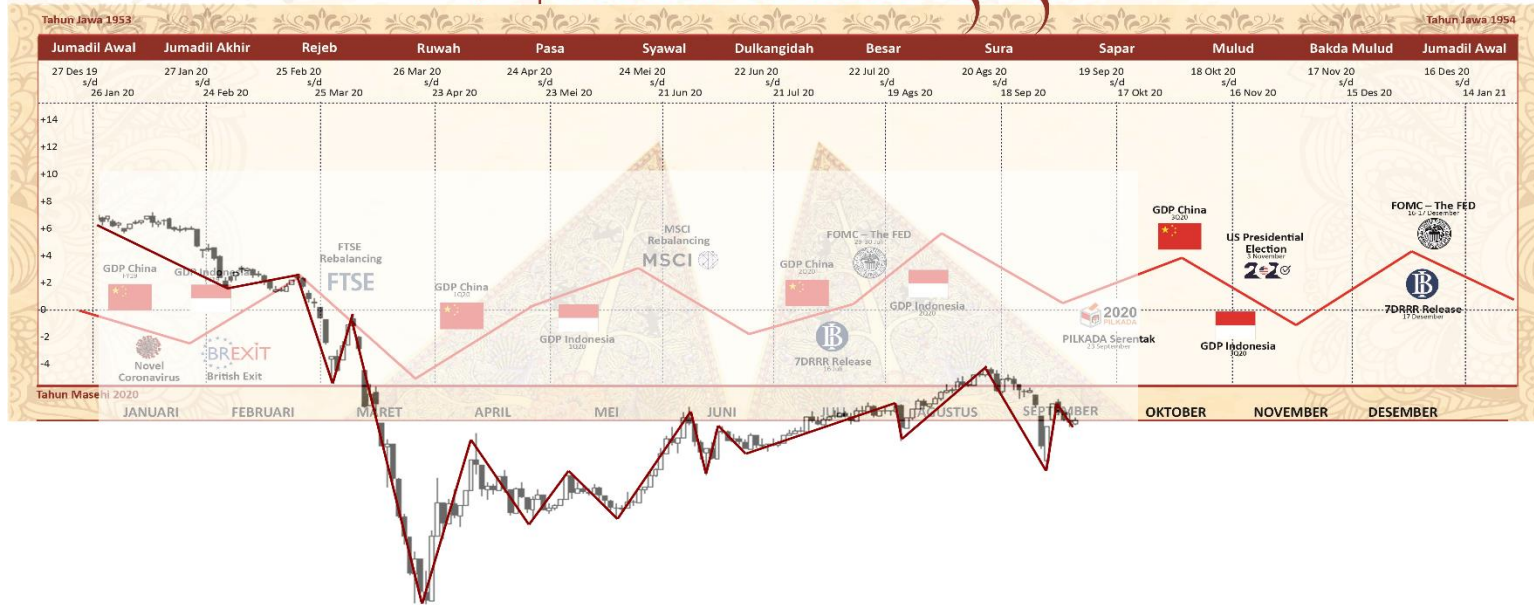
Stock	Close Price	Recommendation	Tactical Moves
GGRM	40,050	Buy on Weakness	Saat ini, kami memperkirakan posisi GGRM sedang berada di akhir wave [v] dari wave C dari wave (B).
PTBA	1,970	Buy on Weakness	Selama PTBA tidak terkoreksi di bawah 1,810, maka saat ini PTBA sedang berada di wave 2 dari wave (C).
LSIP	950	Buy on Weakness	Selama LSIP tidak menembus support di 840, maka pergerakan LSIP saat ini sudah berada di akhir wave [b] dari wave 5.
ANTM	705	Sell on Strength	Saat ini ANTM sedang membentuk wave (v) dari wave [c] dari wave A.

# RRG – Relative Rotation Graph



# MNCS Primbon Index

## Primbon Index 2020



# JCI – Test Support

Pada perdagangan kemarin (30/9), IHSG kembali ditutup terkoreksi 0,2% ke level 4,870. Kami masih memperkirakan pergerakan IHSG akan kembali menguji level 4,820-4,850. Arah pergerakan IHSG sendiri masih memiliki dua skenario, dimana selama IHSG masih mampu bertahan di atas 4,850 maka kami perkirakan IHSG berpeluang mengarah ke area 5,000-5,100 untuk membentuk wave B. Namun sebaliknya, apabila ternyata IHSG terkoreksi agresif ke bawah 4,820 atau bahkan 4,753, maka IHSG terkonfirmasi membentuk wave [v] ke arah 4,500-4,650.

**Support: 4,820, 4,753**  
**Resistance: 4,950, 5,187**

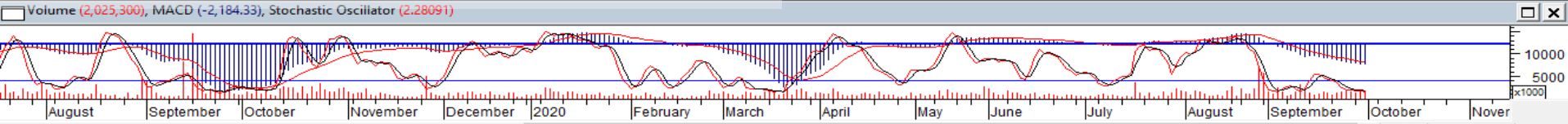


# GGRM – Buy on Weakness

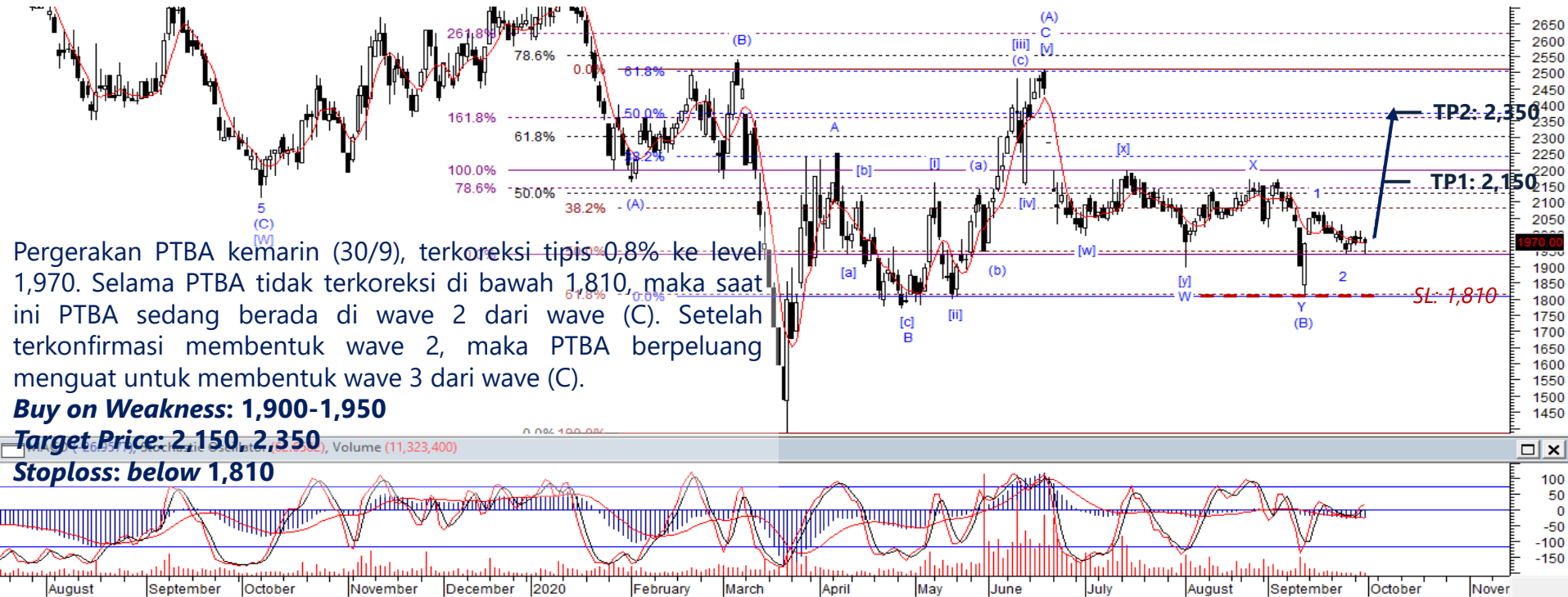


Kemarin (30/9), GGRM menguat 0,4% dan ditutup di level 40,050 disertai dengan munculnya tekanan beli. Saat ini, kami memperkirakan posisi GGRM sedang berada di akhir wave [v] dari wave C dari wave (B). Hal tersebut berarti, koreksi GGRM sudah relatif terbatas dan berpotensi menguat untuk membentuk awal dari wave (C).

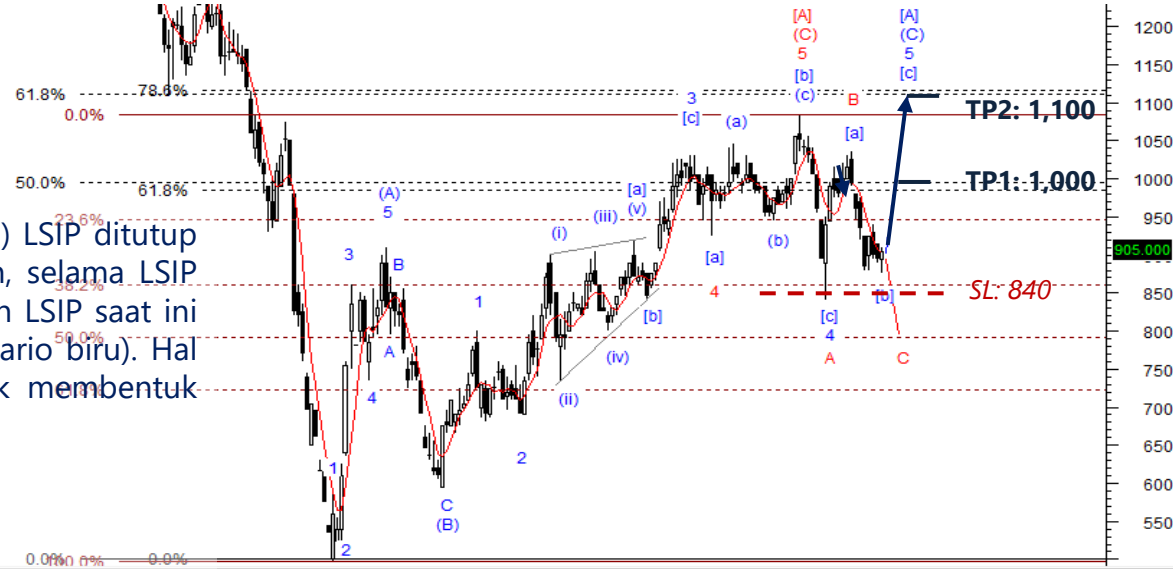
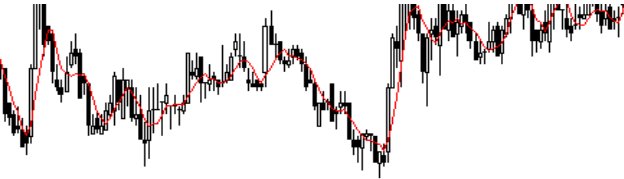
**Buy on Weakness: 39,000-40,000**  
**Target Price: 43,000, 45,000**  
**Stoploss: below 38,450**



# PTBA – Buy on Weakness

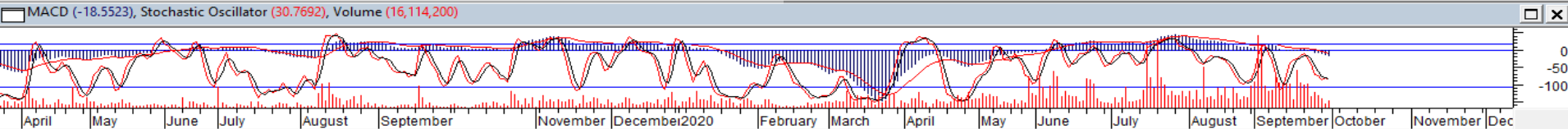


# LSIP – Buy on Weakness



Sempat bergerak terkoreksi ke 875, kemarin (30/9) LSIP ditutup menguat 1,1% ke level 905. Kami memperkirakan, selama LSIP tidak menembus support di 840, maka pergerakan LSIP saat ini sudah berada di akhir wave [b] dari wave 5 (skenario biru). Hal tersebut berarti, LSIP berpeluang menguat untuk membentuk wave [c] dari wave 5.

**Buy on Weakness: 865-900**  
**Target Price: 1,000, 1,100**  
**Stoploss: below 840**



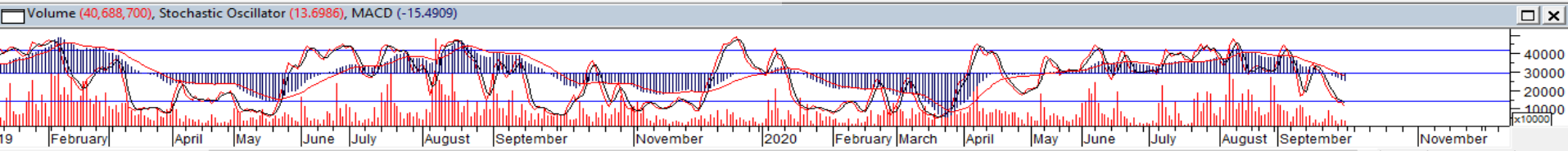


# ANTM – Sell on Strength



ANTM kemarin (30/9) bergerak terkoreksi 1,4% dan ditutup di level 705. Kami memperkirakan saat ini ANTM sedang membentuk wave (v) dari wave [c] dari wave A. Hal tersebut berarti, ANTM masih rentan untuk terkoreksi terlebih dahulu, dengan level koreksi diperkirakan berada di 685 dan 650.

**Sell on Strength: 710-740**



# Institutional Research Team



**Thendra Crisnanda – Head of Institution Research**  
[thendra.crisnanda@mncgroup.com](mailto:thendra.crisnanda@mncgroup.com)  
 Investment Strategy  
 Ext. 52162



**T. Herditya Wicaksana – Technical Analyst**  
[herditya.wicaksana@mncgroup.com](mailto:herditya.wicaksana@mncgroup.com)  
 Technical Specialist – Elliott Wave  
 Ext. 52150



**Victoria Venny – Research Analyst**  
[victoria.nawang@mncgroup.com](mailto:victoria.nawang@mncgroup.com)  
 Telco, Toll Road, Logistic, Consumer, Poultry  
 Ext. 52236



**Catherina Vincentia – Research Associate**  
[catherina.vincentia@mncgroup.com](mailto:catherina.vincentia@mncgroup.com)  
 Ext. 52306



**Muhamad Rudy Setiawan – Research Analyst**  
[muhamad.setiawan@mncgroup.com](mailto:muhamad.setiawan@mncgroup.com)  
 Construction, Property, Oil and Gas  
 Ext. 52317

**Disclaimer :** MNCS Daily Scope Wave has been issued by PT MNC Sekuritas, It may not be reproduced or further distributed or published, in whole or in part, for any purpose. PT MNC Sekuritas has based this document on information obtained from sources it believes to be reliable but which it has not independently verified; PT MNC Sekuritas makes no guarantee, representation or warranty and accepts no responsibility to liability as to its accuracy or completeness. Expression of opinion herein are those of the research department only and are subject to change without notice. This document is not and should not be construed as an offer or the solicitation of an offer to purchase or subscribe or sell any investment. PT MNC Sekuritas and its affiliates and/or their offices, directors and employees may own or have positions in any investment mentioned herein or any investment related thereto and may from time to time add to or dispose of any such investment. PT MNC Sekuritas and its affiliates may act as market maker or have assumed an underwriting position in the securities of companies discussed herein (or investment related thereto) and may sell them to or buy them from customers on a principal basis and may also perform or seek to perform investment banking or underwriting services for or relating to those companies.