



# Daily SCOPE Wave

**MNC Financial Center Lt. 16**

Jl. Kebon Sirih No. 21 – 27, Jakarta 10340, Indonesia

[www.mncsekuritas.id](http://www.mncsekuritas.id)

a member of MNC Group

Institution Research Team | [herditya.wicaksana@mncgroup.com](mailto:herditya.wicaksana@mncgroup.com) | +6221 29080 3111 Ext.52150

**2 Oktober 2020**

## Jakarta Composite Index (JCI) *short term (1-2 days) bearish*

*IHSG kemarin (1/10) bergerak menguat, meskipun begitu IHSG harus mampu menembus area 5,000 untuk menuju 5,100-5,200. Tetap waspada di support di 4,820 dan 4,753*

### Top picks of the Day :

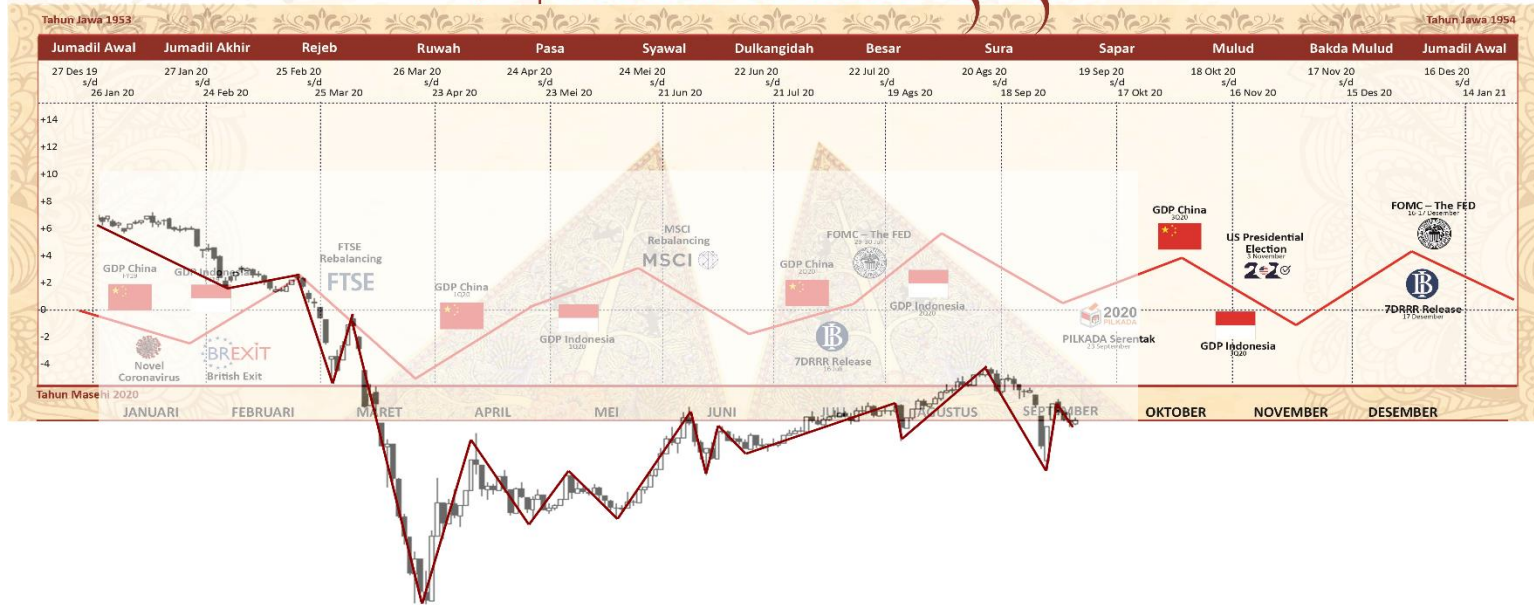
Stock	Close Price	Recommendation	Tactical Moves
TLKM	2,750	Buy on Weakness	Selama tidak terkoreksi ke bawah 2,540, maka saat ini posisi TLKM sedang membentuk awal dari wave C.
PGAS	955	Buy on Weakness	Pergerakan PGAS kemarin (1/10) kami perkirakan merupakan awal dari wave B dari wave (B).
AALI	10,675	Buy on Weakness	Saat ini AALI sedang berada di awal wave [iii] dari wave 5.
SMRA	565	Sell on Strength	Penguatan SMRA akan cenderung terbatas untuk membentuk wave (c) dari wave [b].

# RRG – Relative Rotation Graph



# MNCS Primbon Index

## Primbon Index 2020



# JCI - 5,000?

IHSG bergerak menguat 1,8% dan ditutup di level 4,956 dan mulai muncul tekanan beli yang cukup kuat. Kami memperkirakan selama IHSG mampu bergerak di atas 4,950 atau bahkan mampu menguat di atas 5,000, maka IHSG akan bergerak ke area 5,100-5,200 untuk membentuk wave B pada skenario merah. Namun sebaliknya, apabila ternyata IHSG terkoreksi agresif ke bawah 4,820 atau bahkan 4,753 maka IHSG terkonfirmasi membentuk wave [v] ke arah 4,500-4,650.

**Support: 4,900, 4,820**  
**Resistance: 5,000, 5,187**

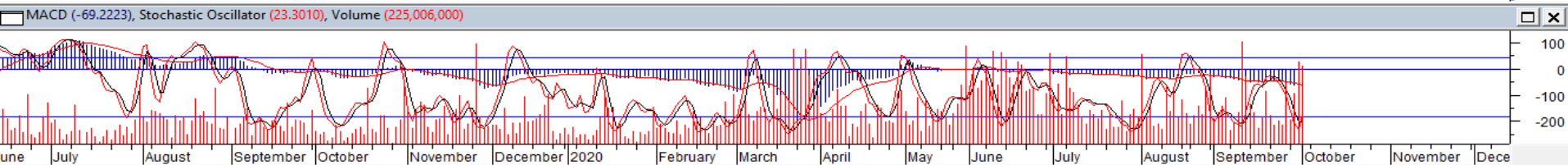


# TLKM – Buy on Weakness



TLKM bergerak menguat signifikan sebesar 7,4% dan ditutup di level 2,750 diiringi dengan tekanan beli yang cukup besar. Selama tidak terkoreksi ke bawah 2,540, maka saat ini posisi TLKM sedang membentuk awal dari wave C. Hal tersebut berarti TLKM berpeluang melanjutkan penguatannya.

**Buy on Weakness: 2,650-2,720**  
**Target Price: 2,800, 2,950**  
**Stoploss: below 2,540**



# PGAS – Buy on Weakness

Selama tidak terkoreksi kembali ke bawah 905, maka pergerakan PGAS kemarin (1/10) kami perkirakan merupakan awal dari wave B dari wave (B). Hal tersebut berarti PGAS berpeluang untuk melanjutkan penguatannya terlebih dahulu.

**Buy on Weakness: 925-950**

**Target Price: 1,000, 1,080**

**Stoploss: below 905**

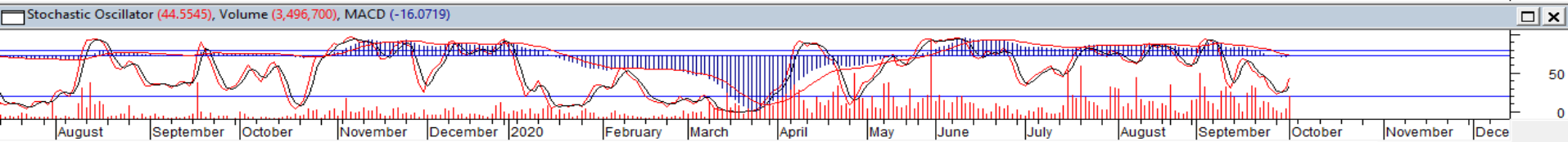


# AAJI – Buy on Weakness



Kemarin (1/10), AALI ditutup menguat 4,9% ke level 10,675. Kami memperkirakan saat ini AALI sedang berada di awal wave [iii] dari wave 5. Hal tersebut berarti AALI masih memiliki peluang untuk melanjutkan penguatannya.

**Buy on Weakness: 10,300-10,600**  
**Target Price: 11,375, 12,425**  
**Stoploss: below 9,600**

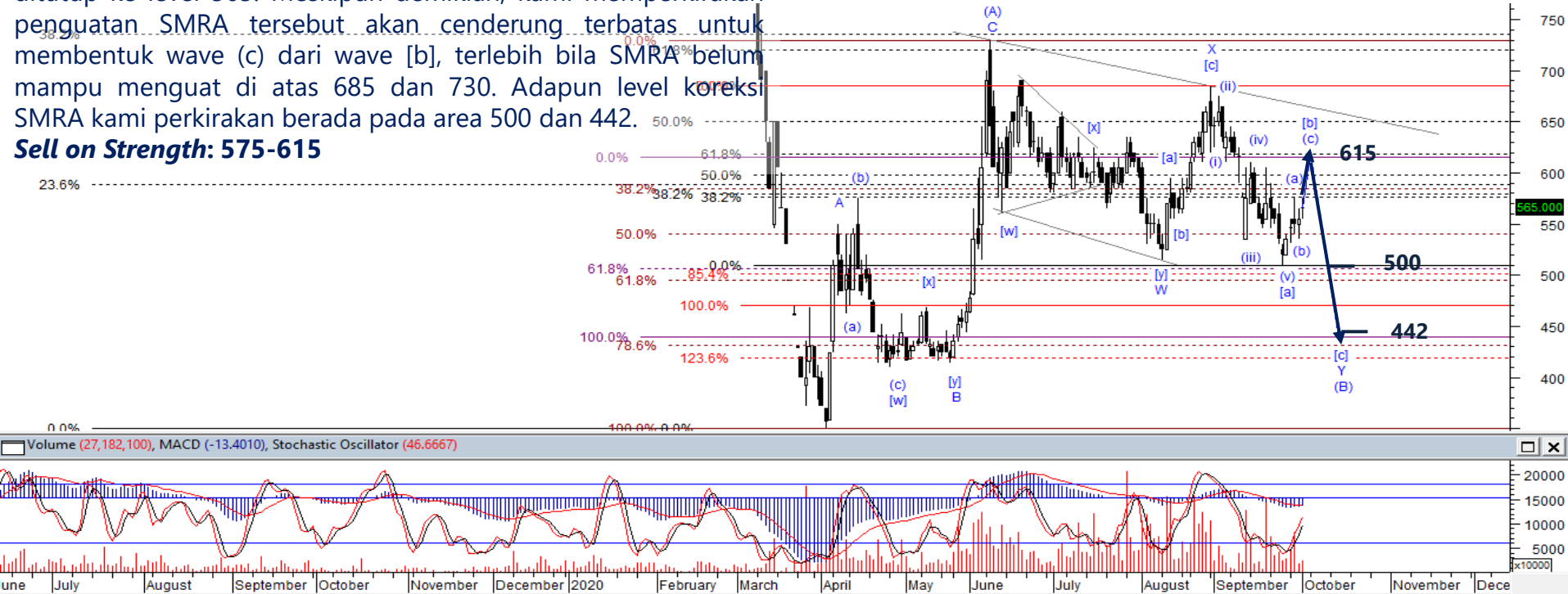




# SMRA – Sell on Strength

Pada perdagangan kemarin (1/10), SMRA menguat 1,8% dan ditutup ke level 565. Meskipun demikian, kami memperkirakan penguatan SMRA tersebut akan cenderung terbatas untuk membentuk wave (c) dari wave [b], terlebih bila SMRA belum mampu menguat di atas 685 dan 730. Adapun level koreksi SMRA kami perkirakan berada pada area 500 dan 442.

**Sell on Strength: 575-615**



# Institutional Research Team



**Thendra Crisnanda – Head of Institution Research**  
[thendra.crisnanda@mncgroup.com](mailto:thendra.crisnanda@mncgroup.com)  
Investment Strategy  
Ext. 52162



**T. Herditya Wicaksana – Technical Analyst**  
[herditya.wicaksana@mncgroup.com](mailto:herditya.wicaksana@mncgroup.com)  
Technical Specialist – Elliott Wave  
Ext. 52150



**Victoria Venny – Research Analyst**  
[victoria.nawang@mncgroup.com](mailto:victoria.nawang@mncgroup.com)  
Telco, Toll Road, Logistic, Consumer, Poultry  
Ext. 52236



**Catherina Vincentia – Research Associate**  
[catherina.vincentia@mncgroup.com](mailto:catherina.vincentia@mncgroup.com)  
Ext. 52306



**Muhamad Rudy Setiawan – Research Analyst**  
[muhamad.setiawan@mncgroup.com](mailto:muhamad.setiawan@mncgroup.com)  
Construction, Property, Oil and Gas  
Ext. 52317

**Disclaimer :** MNCS Daily Scope Wave has been issued by PT MNC Sekuritas, It may not be reproduced or further distributed or published, in whole or in part, for any purpose. PT MNC Sekuritas has based this document on information obtained from sources it believes to be reliable but which it has not independently verified; PT MNC Sekuritas makes no guarantee, representation or warranty and accepts no responsibility to liability as to its accuracy or completeness. Expression of opinion herein are those of the research department only and are subject to change without notice. This document is not and should not be construed as an offer or the solicitation of an offer to purchase or subscribe or sell any investment. PT MNC Sekuritas and its affiliates and/or their offices, directors and employees may own or have positions in any investment mentioned herein or any investment related thereto and may from time to time add to or dispose of any such investment. PT MNC Sekuritas and its affiliates may act as market maker or have assumed an underwriting position in the securities of companies discussed herein (or investment related thereto) and may sell them to or buy them from customers on a principal basis and may also perform or seek to perform investment banking or underwriting services for or relating to those companies.