



# Daily SCOPE Wave

**MNC Financial Center Lt. 16**

Jl. Kebon Sirih No. 21 – 27, Jakarta 10340, Indonesia

[www.mncsekuritas.id](http://www.mncsekuritas.id)

a member of MNC Group

Institution Research Team | [herditya.wicaksana@mncgroup.com](mailto:herditya.wicaksana@mncgroup.com) | +6221 29080 3111 Ext.52150

**17 Maret 2021**

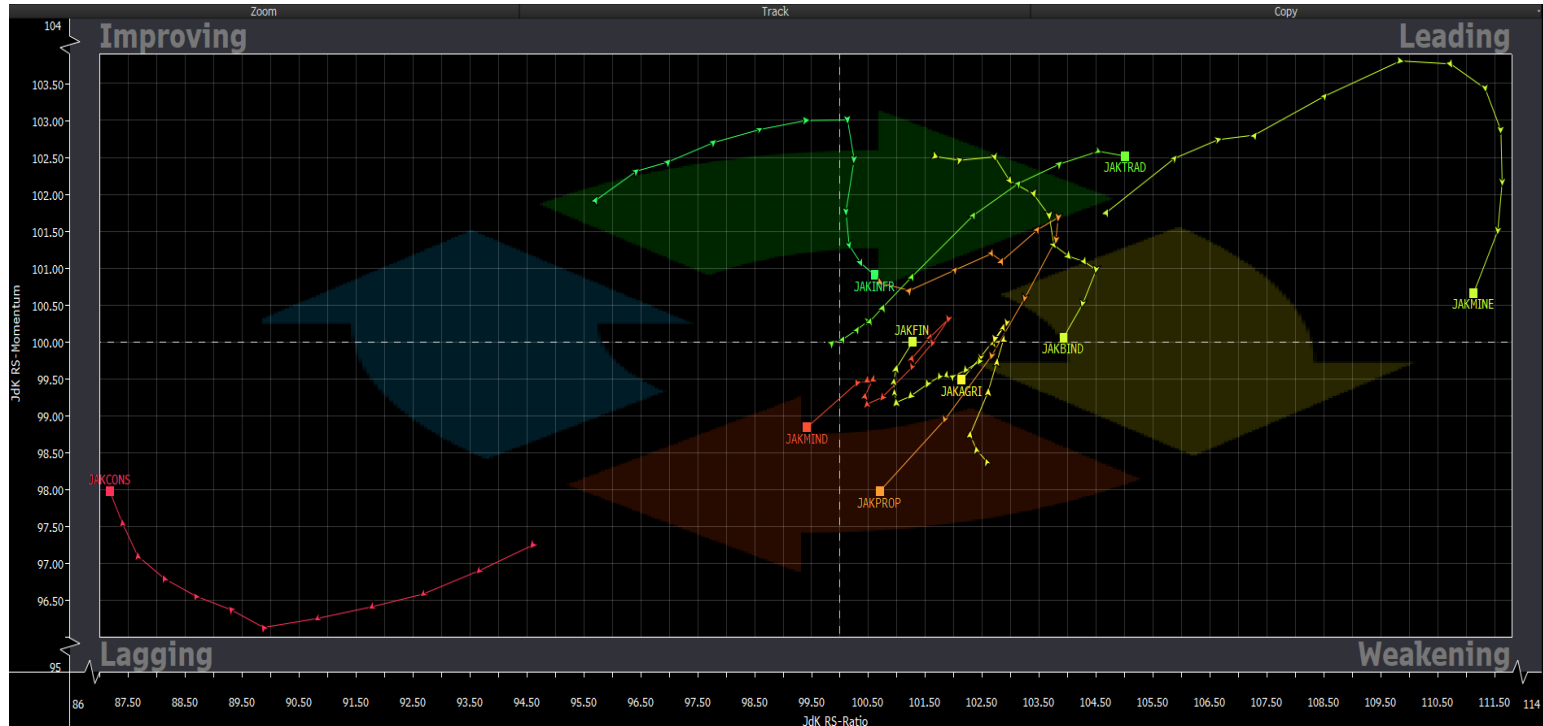
## Jakarta Composite Index (JCI) *short term (1-2 days) bearish*

*IHSG akan menutup gap terlebih pada area 6,276-6,296, namun tidak menutup kemungkinan IHSG akan mengarah ke area 5,950-6,100 bila menembus support 6,160.*

### Top picks of the Day :

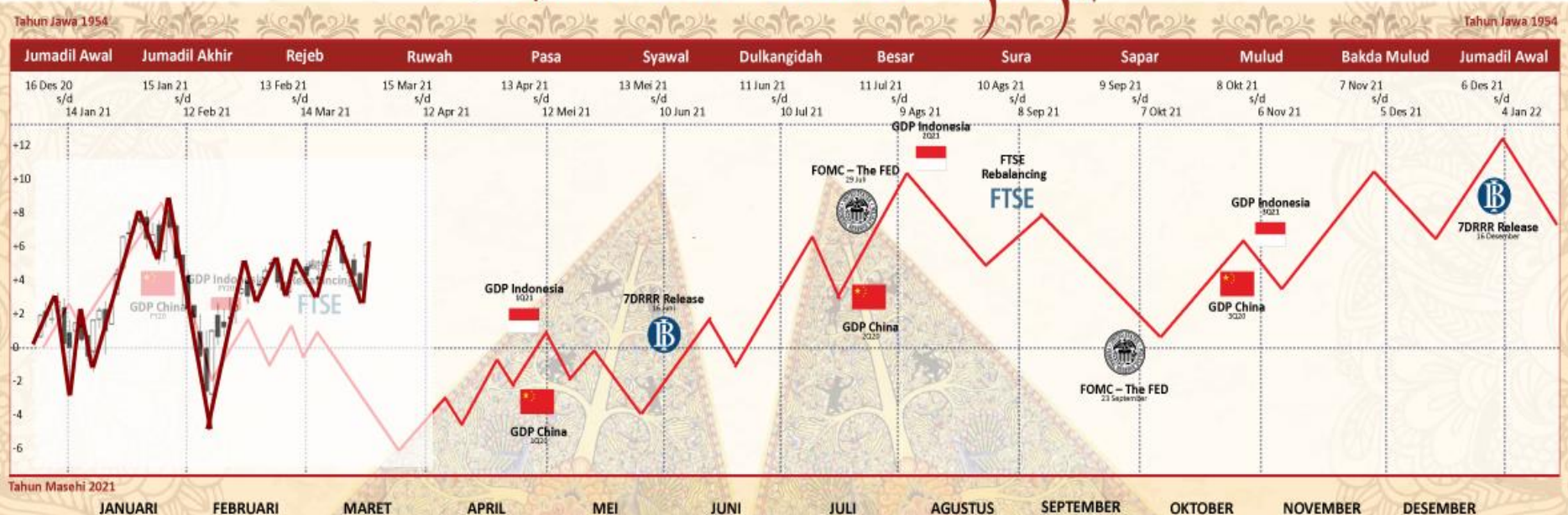
Stock	Close Price	Recommendation	Tactical Moves
INTP	12,650	Buy on Weakness	INTP sudah berada di akhir wave [ii] dari wave 3.
ADRO	1,220	Spec Buy	ADRO sedang membentuk awal wave [iii] atau awal wave (c) pada skenario merah.
LSIP	1,480	Buy on Weakness	LSIP sedang membentuk wave [iv] dari wave 3.
TOWR	1,155	Sell on Strength	TOWR saat ini sedang berada pada bagian dari wave C.

# RRG – Relative Rotation Graph



# MNCS Primbon Index

## Primbon Index 2021

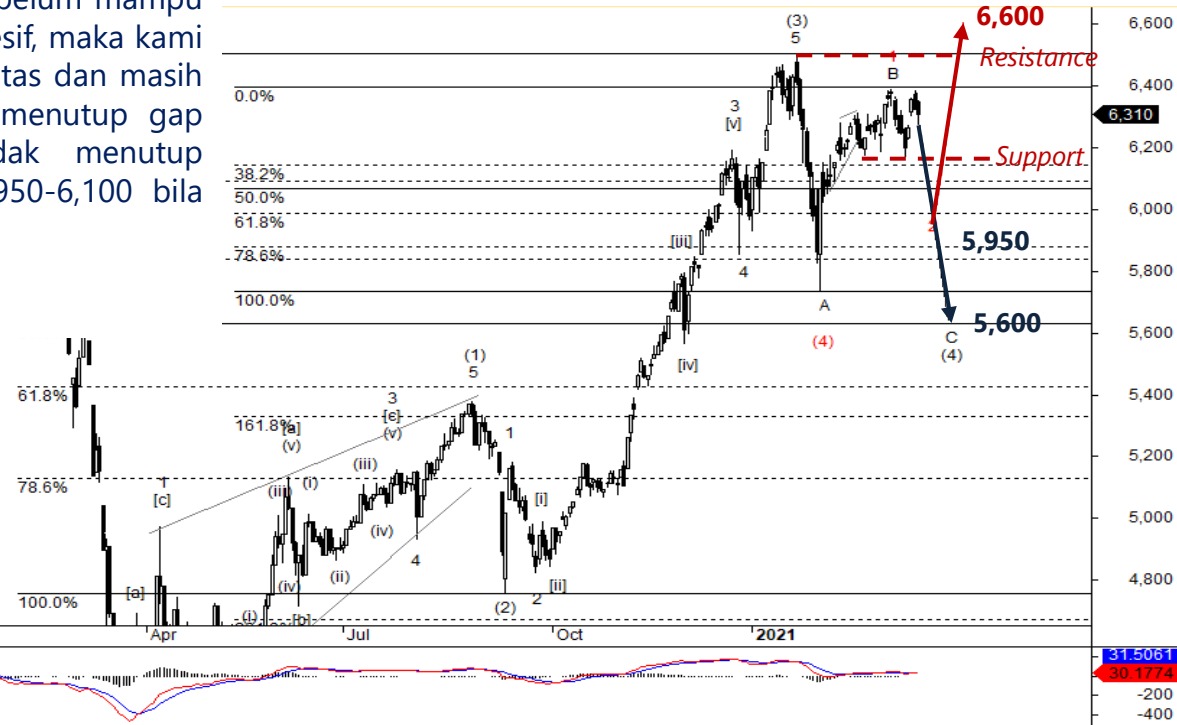


# JCI – Closing Gap

IHSG kembali ditutup terkoreksi pada perdagangan kemarin (16/3) sebesar 0,2% ke level 6,309. Selama IHSG belum mampu menembus resistance 6,400 dan 6,505 secara agresif, maka kami memperkirakan penguatan IHSG cenderung terbatas dan masih rawan terkoreksi. Kami perkirakan, IHSG akan menutup gap terlebih pada area 6,276-6,296, namun tidak menutup kemungkinan IHSG akan mengarah ke area 5,950-6,100 bila menembus support 6,160.

**Support: 6,160, 6,090**

**Resistance: 6,400, 6,505**



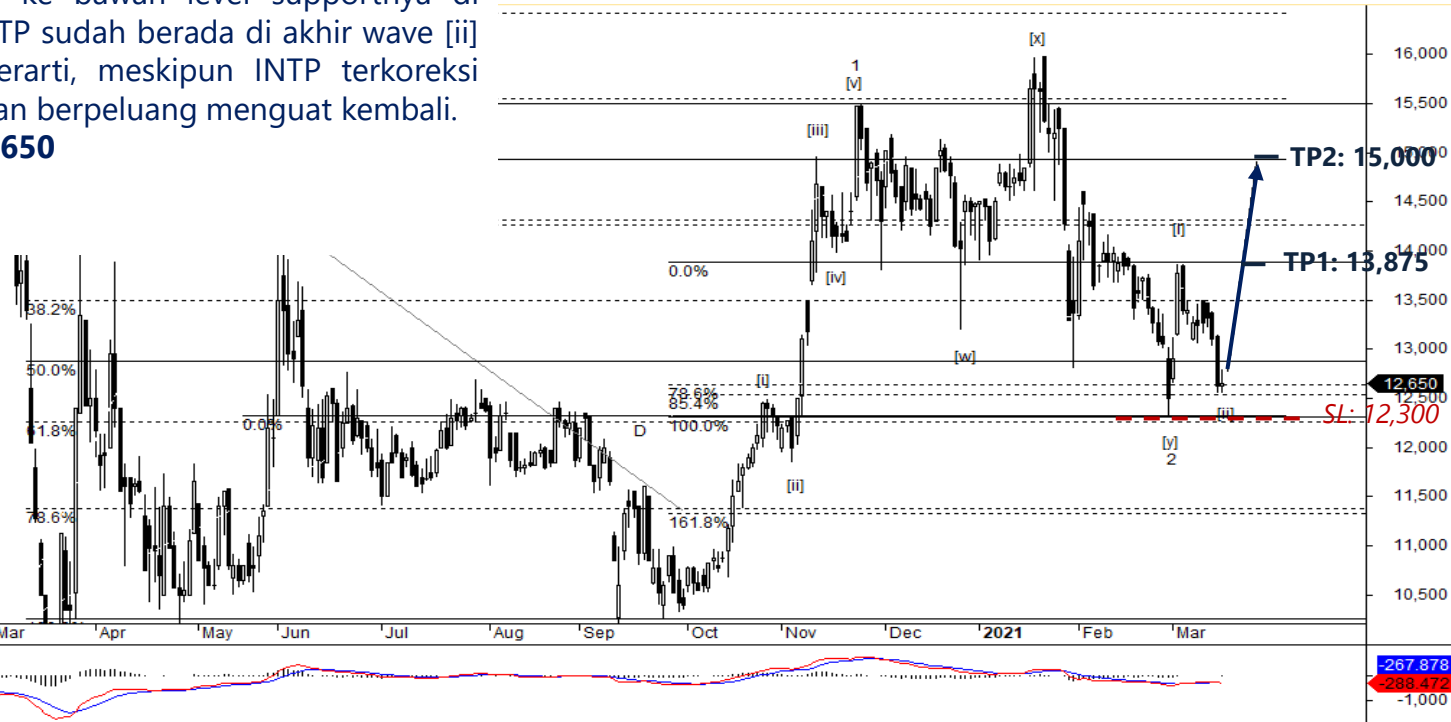
# INTP – Buy on Weakness

Kemarin (16/3), INTP ditutup menguat tipis 0,2% ke level 12,650. Selama INTP tidak terkoreksi ke bawah level supportnya di 12,300, maka saat ini posisi INTP sudah berada di akhir wave [ii] dari wave 3. Hal tersebut berarti, meskipun INTP terkoreksi namun sudah relatif terbatas dan berpotensi menguat kembali.

**Buy on Weakness: 12,500-12,650**

**Target Price: 13,875, 15,000**

**Stoploss: below 12,300**



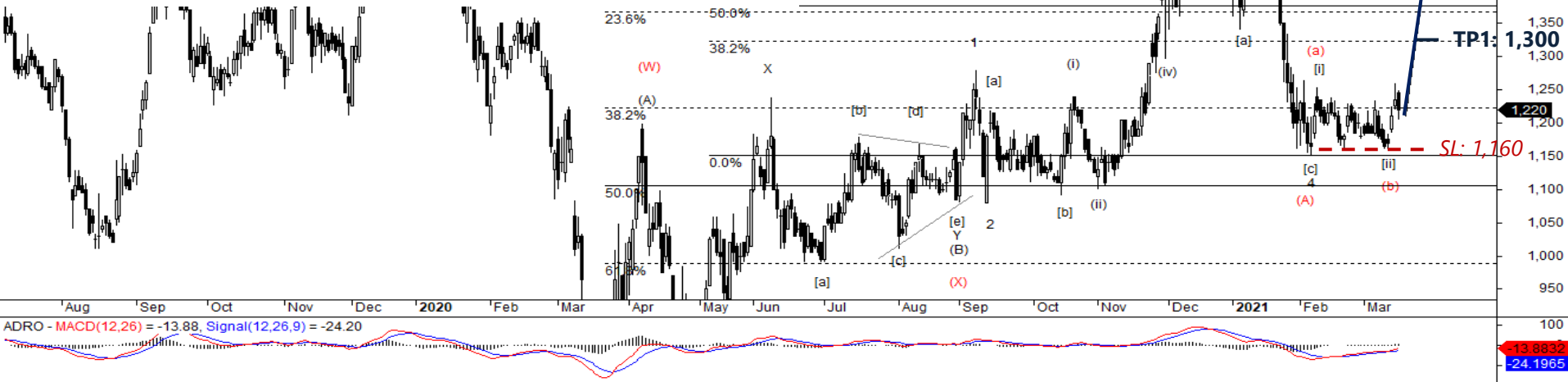
# ADRO – Spec Buy

ADRO ditutup terkoreksi 1,2% ke level 1,220 pada perdagangan kemarin (16/3). Support ADRO berada pada level 1,160, selama masih kuat berada di atas level tersebut maka ADRO berpotensi untuk menguat, karena saat ini sedang membentuk awal wave [iii] atau awal wave (c) pada skenario merah.

**Spec Buy: 1,190-1,220**

**Target Price: 1,300, 1,430**

**Stoploss: below 1,160**



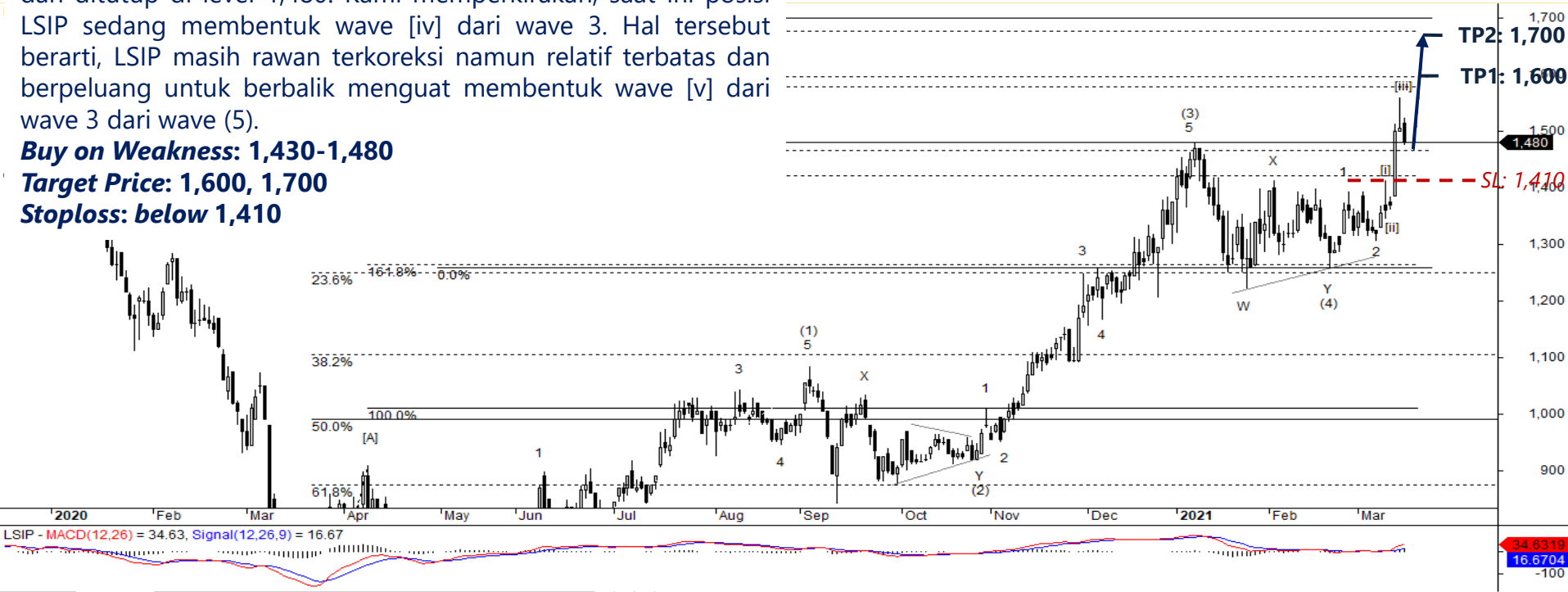
# LSIP – Buy on Weakness

Pada perdagangan kemarin (16/3), LSIP bergerak terkoreksi 1,7% dan ditutup di level 1,480. Kami memperkirakan, saat ini posisi LSIP sedang membentuk wave [iv] dari wave 3. Hal tersebut berarti, LSIP masih rawan terkoreksi namun relatif terbatas dan berpeluang untuk berbalik menguat membentuk wave [v] dari wave 3 dari wave (5).

**Buy on Weakness: 1,430-1,480**

**Target Price: 1,600, 1,700**

**Stoploss: below 1,410**

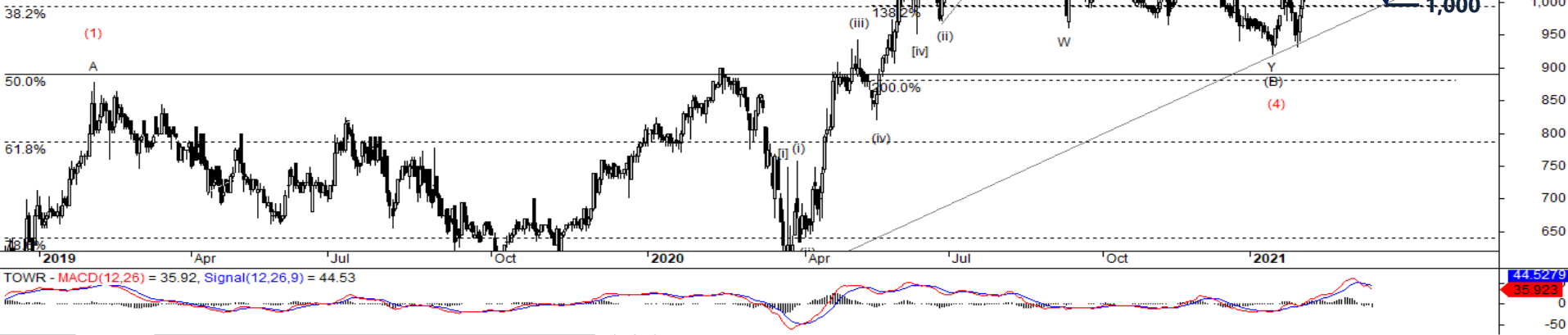




# TOWR – Sell on Strength

TOWR ditutup terkoreksi cukup agresif sebesar 3,3% ke level 1,155 disertai tekanan jual yang cukup besar. Selama TOWR belum mampu ditutup di atas level resistancenya di 1,325, maka posisi TOWR saat ini sedang berada pada bagian dari wave C. Hal tersebut berarti, TOWR masih rawan terkoreksi dengan rentang pada level 1,000-1,070 dan akan terkonfirmasi bila TOWR menembus support 1,140.

**Sell on Strength: 1,155-1,200**



# Institutional Research Team



**Thendra Crisnanda – Head of Research**  
[thendra.crisnanda@mncgroup.com](mailto:thendra.crisnanda@mncgroup.com)  
 Investment Strategy  
 Ext. 52162



**Victoria Venny – Research Analyst**  
[victoria.nawang@mncgroup.com](mailto:victoria.nawang@mncgroup.com)  
 Telco, Toll Road, Logistic, Consumer, Poultry



**T. Herditya Wicaksana – Technical Analyst**  
[herditya.wicaksana@mncgroup.com](mailto:herditya.wicaksana@mncgroup.com)  
 Technical Specialist – Elliott Wave



**Muhamad Rudy Setiawan – Research Analyst**  
[muhamad.setiawan@mncgroup.com](mailto:muhamad.setiawan@mncgroup.com)  
 Construction, Property, Oil and Gas



**Catherina Vincentia – Research Associate**  
[catherina.vincentia@mncgroup.com](mailto:catherina.vincentia@mncgroup.com)  
 Generalist



**Aqil Triyadi – Research Associate**  
[aqil.triyadi@mncgroup.com](mailto:aqil.triyadi@mncgroup.com)  
 Generalist

**Disclaimer :** MNCS Daily Scope Wave has been issued by PT MNC Sekuritas, It may not be reproduced or further distributed or published, in whole or in part, for any purpose. PT MNC Sekuritas has based this document on information obtained from sources it believes to be reliable but which it has not independently verified; PT MNC Sekuritas makes no guarantee, representation or warranty and accepts no responsibility to liability as to its accuracy or completeness. Expression of opinion herein are those of the research department only and are subject to change without notice. This document is not and should not be construed as an offer or the solicitation of an offer to purchase or subscribe or sell any investment. PT MNC Sekuritas and its affiliates and/or their offices, directors and employees may own or have positions in any investment mentioned herein or any investment related thereto and may from time to time add to or dispose of any such investment. PT MNC Sekuritas and its affiliates may act as market maker or have assumed an underwriting position in the securities of companies discussed herein (or investment related thereto) and may sell them to or buy them from customers on a principal basis and may also perform or seek to perform investment banking or underwriting services for or relating to those companies.