



Daily SCOPE Wave

MNC Financial Center Lt. 16

Jl. Kebon Sirih No. 21 – 27, Jakarta 10340, Indonesia

www.mncsekuritas.id

a member of MNC Group

Institution Research Team | herditya.wicaksana@mncgroup.com | +6221 29080 3111 Ext.52150

24 Maret 2021

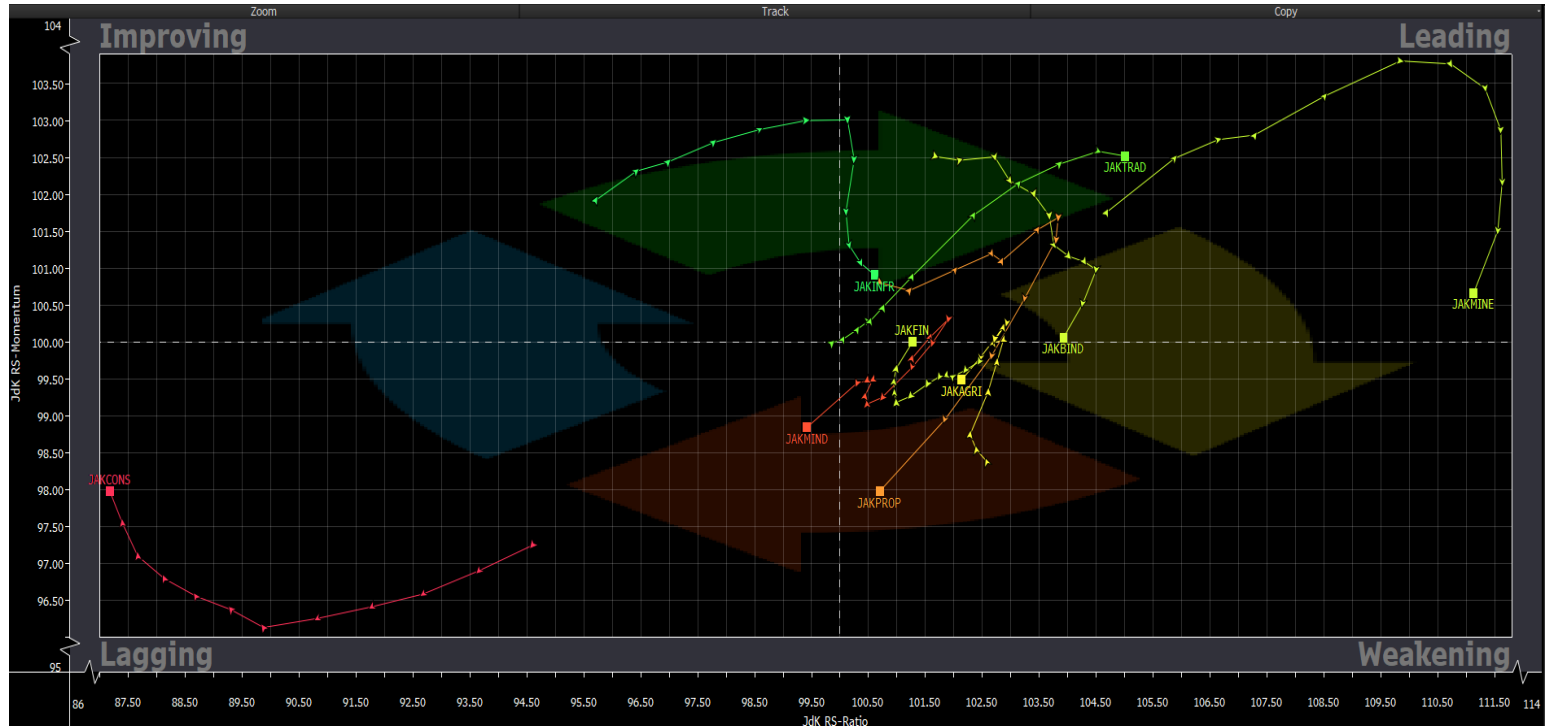
Jakarta Composite Index (JCI) *short term (1-2 days) bearish*

Dengan tertembusnya support terdekat di 6,268, maka IHSG kami perkirakan masih rawan terkoreksi untuk menuju 6,220-6,240.

Top picks of the Day :

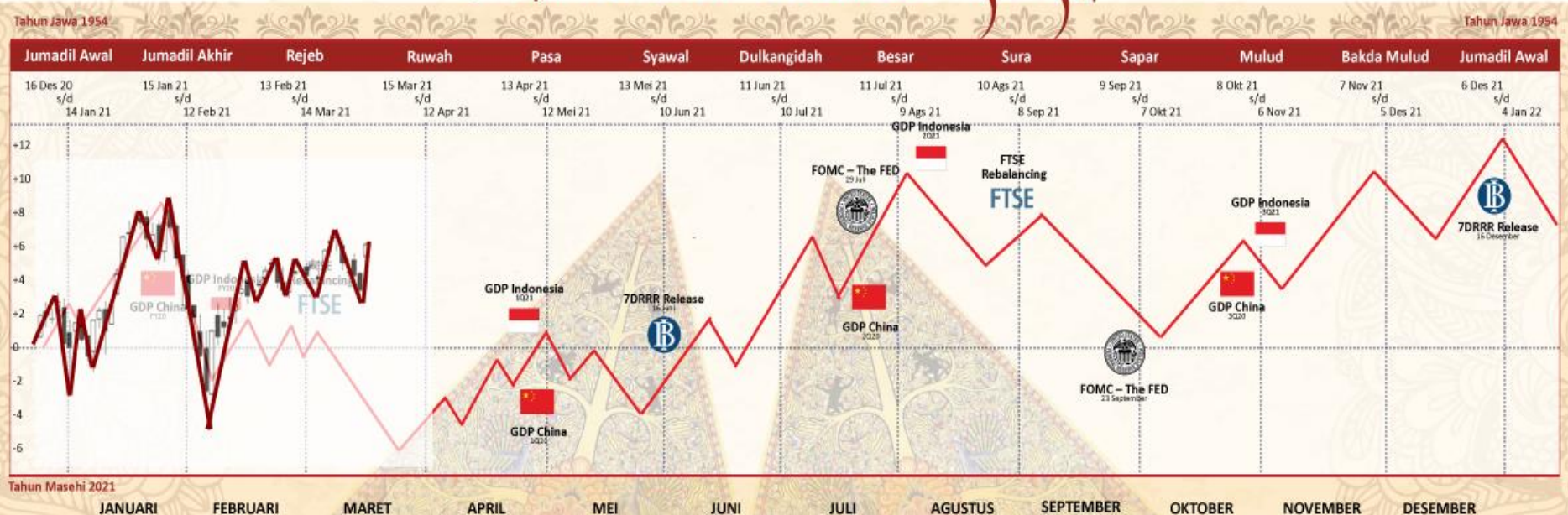
Stock	Close Price	Recommendation	Tactical Moves
INCO	4,500	Buy on Weakness	INCO saat ini sudah berada di akhir koreksi wave C dari wave (A).
ASII	5,575	Buy on Weakness	ASII saat ini sudah berada di akhir fase koreksi dari wave (ii) dari wave [iii].
HRUM	5,250	Buy on Weakness	HRUM diperkirakan sedang berada di awal wave [c] dari wave 1 dari wave (5).
MAPI	790	Sell on Strength	Posisi MAPI sedang berada pada bagian dari wave (C) dari wave [B].

RRG – Relative Rotation Graph



MNCS Primbon Index

Primbon Index 2021



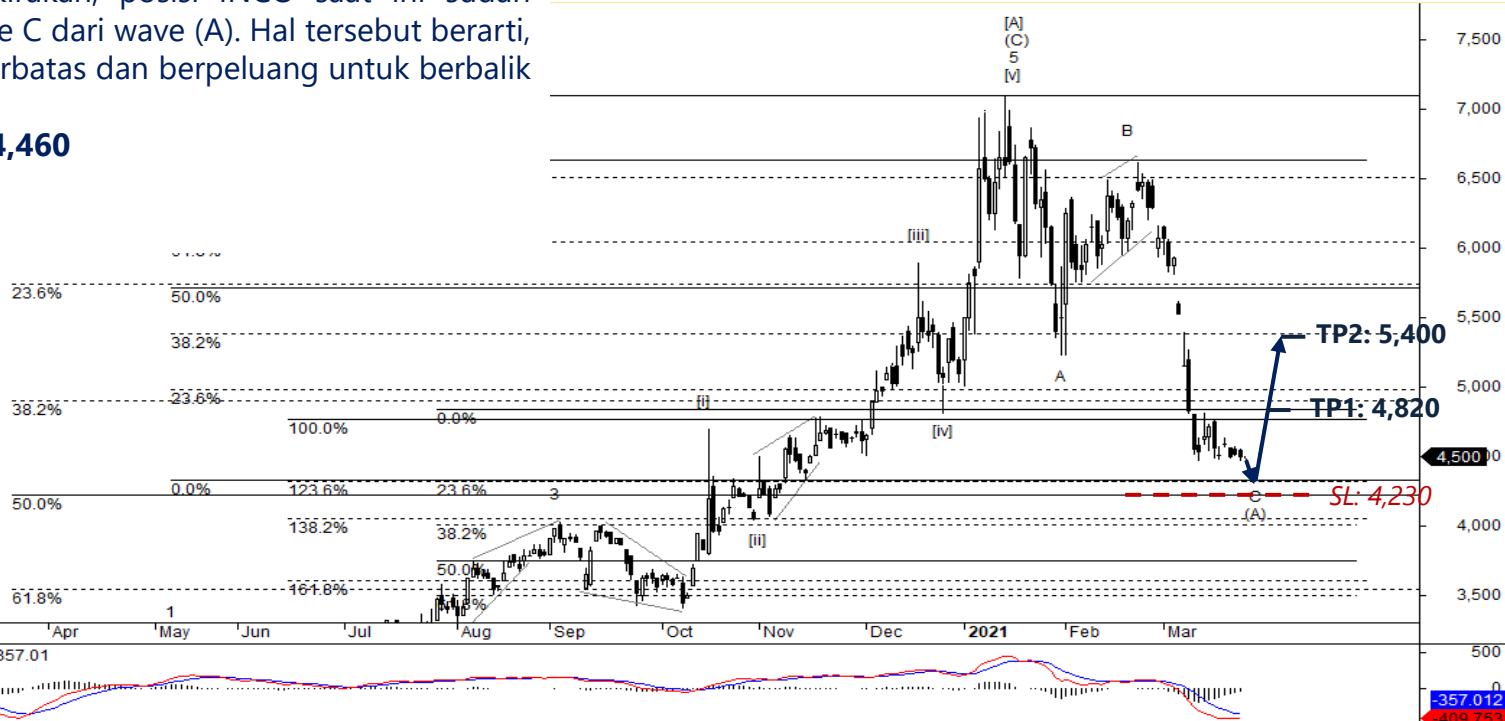
INCO – Buy on Weakness

Pada perdagangan kemarin (23/3), INCO ditutup terkoreksi 0,4% ke level 4,500. Kami perkirakan, posisi INCO saat ini sudah berada di akhir koreksi wave C dari wave (A). Hal tersebut berarti, koreksi INCO akan relatif terbatas dan berpotensi untuk berbalik menguat.

Buy on Weakness: 4,330-4,460

Target Price: 4,820, 5,400

Stoploss: below 4,230



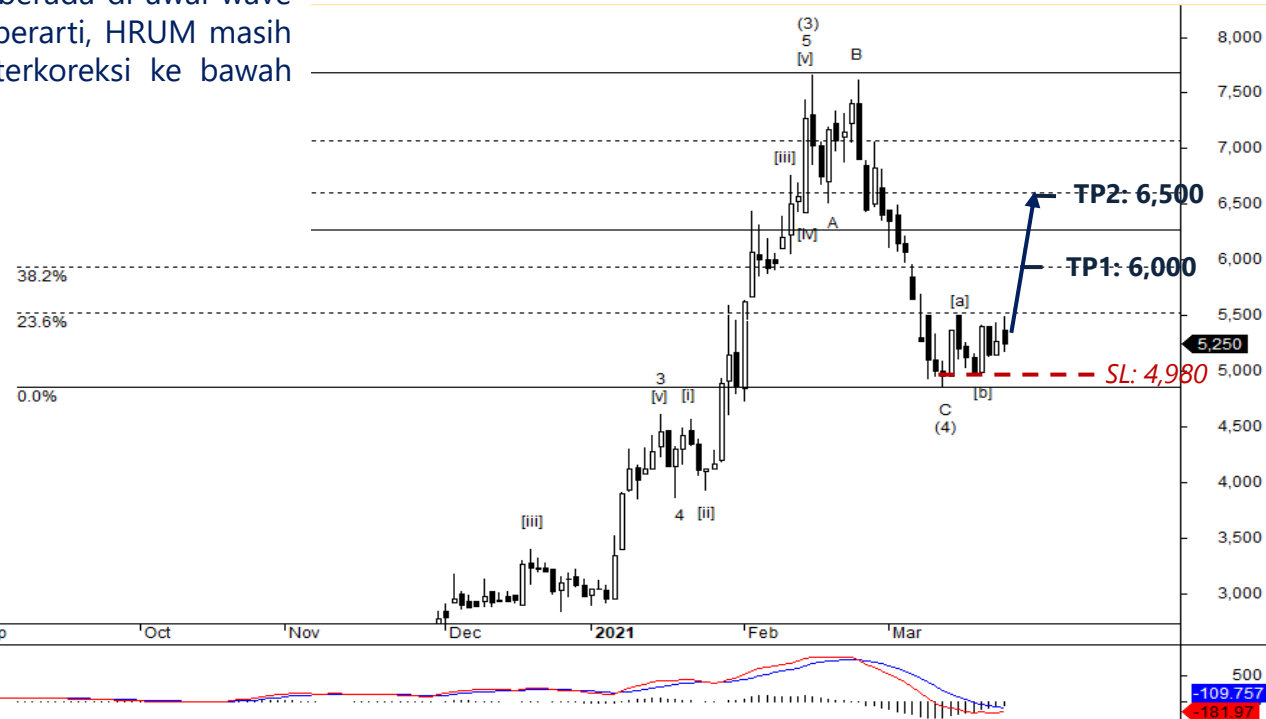
HRUM – Buy on Weakness

Kemarin (23/3), HRUM ditutup terkoreksi 0,5% ke level 5,250. Saat ini, posisi HRUM diperkirakan sedang berada di awal wave [c] dari wave 1 dari wave (5). Hal tersebut berarti, HRUM masih berpotensi untuk menguat selama tidak terkoreksi ke bawah 4,980.

Buy on Weakness: 5,100-5,225

Target Price: 6,000, 6,500

Stoploss: below 4,980



MAPI – Sell on Strength

MAPI ditutup terkoreksi 0,6% ke level 790 pada perdagangan kemarin (23/3). Posisi MAPI saat ini kami perkirakan sedang berada pada bagian dari wave (C) dari wave [B]. Hal tersebut berarti, MAPI masih rawan melanjutkan koreksinya dengan rentang 690-720.

Sell on Strength: 800-830



Institutional Research Team



Thendra Crisnanda – Head of Research
thendra.crisnanda@mncgroup.com
Investment Strategy
Ext. 52162



Victoria Venny – Research Analyst
victoria.nawang@mncgroup.com
Telco, Toll Road, Logistic, Consumer, Poultry



T. Herditya Wicaksana – Technical Analyst
herditya.wicaksana@mncgroup.com
Technical Specialist – Elliott Wave



Muhamad Rudy Setiawan – Research Analyst
muhamad.setiawan@mncgroup.com
Construction, Property, Oil and Gas



Catherina Vincentia – Research Associate
catherina.vincentia@mncgroup.com
Generalist



Aqil Triyadi – Research Associate
aqil.triyadi@mncgroup.com
Generalist

Disclaimer : MNCS Daily Scope Wave has been issued by PT MNC Sekuritas, It may not be reproduced or further distributed or published, in whole or in part, for any purpose. PT MNC Sekuritas has based this document on information obtained from sources it believes to be reliable but which it has not independently verified; PT MNC Sekuritas makes no guarantee, representation or warranty and accepts no responsibility to liability as to its accuracy or completeness. Expression of opinion herein are those of the research department only and are subject to change without notice. This document is not and should not be construed as an offer or the solicitation of an offer to purchase or subscribe or sell any investment. PT MNC Sekuritas and its affiliates and/or their offices, directors and employees may own or have positions in any investment mentioned herein or any investment related thereto and may from time to time add to or dispose of any such investment. PT MNC Sekuritas and its affiliates may act as market maker or have assumed an underwriting position in the securities of companies discussed herein (or investment related thereto) and may sell them to or buy them from customers on a principal basis and may also perform or seek to perform investment banking or underwriting services for or relating to those companies.