

Tuesday, January 22, 2019

IHSG	MNC 36
<b>6,450.83</b>	<b>372.24</b>
+2.68 (+0.04%)	-0.24 (-0.07%)

### Today Trade

Volume (million share)	12,283
Value (billion Rp)	8,396
Market Cap.	7,321
Average PE	14.7
Average PBV	2.6

### Indonesia Economy

	Last (%)	Prev (%)
Real GDP (YoY)	5.17	5.27
Inflation rate (YoY)	3.13	3.23
BI 7-days repo rate	6.0	6.0
LPS rate	7.00	6.75

### Global Indexes

Index	Last	d/d (%)	YTD (%)
JCI	6,450.8	+0.04	+4.14
Dow Jones	24,706	0.00	+5.91
S&P 500	2,670	0.00	+6.54
FTSE 100	19,638	-0.35	+7.17
Nikkei	20,719	+0.26	+3.52

### FX

Currency	Last	d/d (%)	YTD (%)
USD/IDR	14,228	-0.35	+1.13
EUR/USD	1.14	-0.02	+0.89
GBP/USD	1.29	-0.16	-1.08
USD/JPY	109.67	+0.10	+0.02

### Commodities

Commodity	Last	d/d (%)	YTD (%)
Crude Oil (USD/barrel)	53.8	0.00	+18.48
Coal (USD/ton)	99.35	-0.40	-2.64
Gold (USD/oz)	1,279	-0.36	+0.04
Nickel (USD/ton)	11,800	-0.17	+10.38
CPO (RM/Mton)	2,142	0.00	+6.89
Tin (US/Ton)	20,650	+0.12	+6.03

## MNCS Update

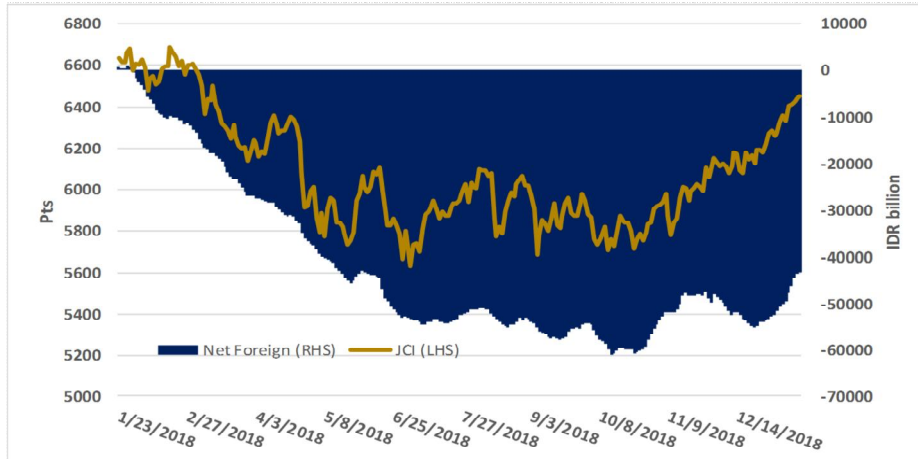
Merespon perlambatan ekonomi China dalam 28 tahun terakhir karena hanya tumbuh 6.4% dan diturunkannya proyeksi pertumbuhan ekonomi global oleh IMF, disaat Wall Street tutup, membuat Bursa global lain turun, diperkirakan IHSG akan bergerak sideways dalam perdagangan Selasa dengan kisaran supp -resist: 6,411 - 6,485. Saham-saham berbasis CPO, logam, energi dan konsumen sangat menarik untuk dibeli hari ini.

## Global Market

Pada perdagangan 21Jan, Bursa saham Wall Street closed memperingati Martin Luther King, Jr. Day. Bursa saham Zona Eropa cenderung variatif di tengah Perdana Menteri Theresa May tidak mengungkapkan rincian baru tentang rencana barunya B untuk negosiasi Brexit dan mengatakan akan mengadakan pertemuan lebih lanjut dan siklus ekonomi China berlanjut melambat. FTSE100 flat +0.03% dan DAX index melemah -0.62%.

Setelah mood investor portofolio membaik akibat potensi unrestricted trade policy antara US-China, mayoritas bursa saham emerging markets Asia bergerak menguat. Nifty index (+0.63%) dan Shanghai (+0.56%). Begitu juga, IHSG menguat tipis +0.04% ke 6,450 dengan didorong oleh penguatan pada sektor: agriculture (+3.72%); mining (+0.81%); dan infrastructure (+0.48%). Investor portofolio asing berlanjut mencatatkan net buy IDR 443.67 miliar. Adapun, saham-saham yang menjadi leading movers, seperti: BBCA, BBNI, DSSA, BYAN, dan SMGR.

Grafik 1. JCI VS Cummulative Annual of Net Buy (Sell) Foreign



Source: Bloomberg and MNCS

## Economic News

**Pertumbuhan real GDP China terendah 28 tahun.** Real GDP China naik 6.4% YoY pada 4Q18, setelah pertumbuhan 6.5% di kuartal sebelumnya dan sesuai dengan ekspektasi pasar. Itu adalah tingkat pertumbuhan terendah sejak krisis keuangan global, di tengah perselisihan perdagangan yang intens dengan AS, melemahnya permintaan domestik dan pinjaman pemerintah lokal yang mengkhawatirkan. Adapun, secara full-year, real GDP China tumbuh 6.6%, laju terlemah sejak 1990. Sebelumnya, biro statistik China merevisi turun pertumbuhan real GDP negara itu untuk 2017 menjadi 6.8% dari 6.9%. (Trading Economics)

**IMF kembali menurunkan proyeksi pertumbuhan real GDP global.** International Monetary Fund (IMF) menurunkan proyeksi pertumbuhan ekonomi global kali ketiga dalam tiga bulan, menyiratkan peringatan imbas dari perang dagang dan kebuntuan kesepakatan Brexit pada 2019. IMF menurunkan proyeksi pertumbuhan real GDP global menjadi 3.5% pada 2019 dan 3.6% pada 2020, turun 0.2 poin dan 0.1 poin dibandingkan dengan proyeksi Oktober. (Bisnis Indonesia)

**Plan B dari Theresa May Rencana B ditolak.** Theresa May secara tegas dikesampingkan oleh para pemimpin Eropa hari ini hanya beberapa jam sebelum dia berdiri untuk mengumumkannya kepada anggota parlemen. Dublin menyampaikan "Tidak" pada tawaran Downing Street terbaru untuk kembali ke Brussels dan meminta konsesi di bagian belakang. (Standard)

## Corporate News

**PT Wijaya Karta (WIKA).** Perseroan menargetkan perolehan laba tahun ini sebesar Rp3,01 triliun yang ditopang oleh penjualan yang diproyeksikan akan mencapai Rp42,13 triliun hingga akhir 2019. Optimisme WIKA pada 2019 juga tercermin dari kontrak baru yang ditargetkan tumbuh 32 persen menjadi Rp66,74 triliun dibandingkan 2018 sebesar Rp50,65 triliun.

**PT Global Mediacom (BMTR).** Perseroan segera mendapat dana Rp 292,05 miliar di akhir Januari 2019. Dana segar ini berasal dari penambahan modal tanpa hak memesan efek terlebih (PMTHMETD) dahulu alias private placement. Total saham yang diterbitkan ini mencapai 811,27 juta saham atau setara dengan 5,71% dari total saham ditempatkan dan disetor BMTR sebelum private placement dan 5,40% setelah private placement. Sedangkan harga pelaksanaannya Rp 360 per saham, lebih tinggi daripada harga penutupan BMTR kemarin pada Rp 336 per saham.

**PT Metrodata Electronics (MTDL).** Pada tahun 2019 perseroan menargetkan pertumbuhan pendapatan sebesar 10,5% sementara untuk laba bersih bisa naik 12,5%.

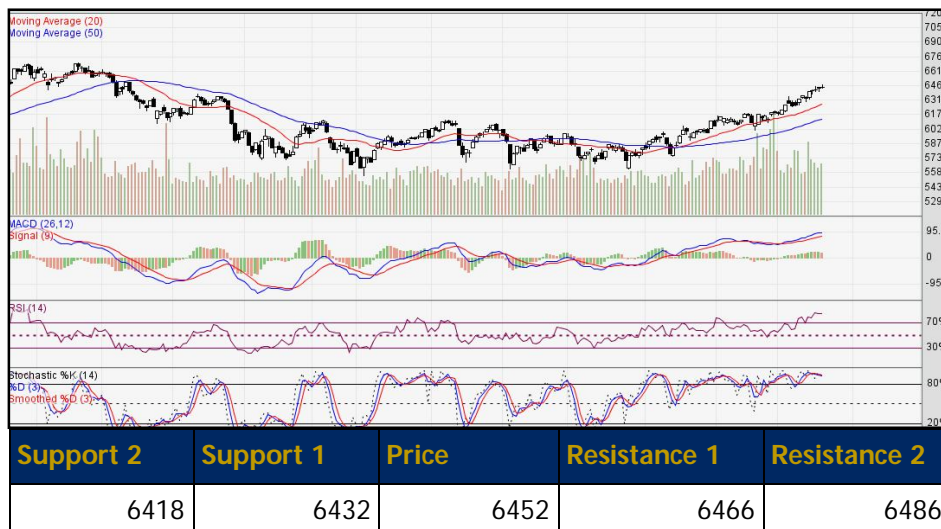
**PT Kino Indonesia Tbk (KINO).** Menyiapkan capex sekitar Rp 200 miliar sampai Rp 250 miliar untuk tahun 2019 ini. Perseroan menargetkan kenaikan 25-30% untuk pendapatan dan laba bersih naik sekitar 50%. (Kontan)

**PT Transcoal Pacific Tbk (TCPI).** Menganggarkan belanja modal sekitar Rp 700 miliar hingga Rp 800 miliar pada tahun ini. Sebagian belanja modal ini akan digunakan untuk penambahan armada. Penambahan armada yang dimaksud antara lain penambahan dua kapal pengangkut *mother vessel*, satu *floating crane* dan beberapa *tug and barge* atau kapal tunda.

## Daily Recommendation

### Jakarta Composite Index (JCI)

- IDX Composite 6,411 - 6,485
- SUMMARY: **STRONG BUY & ACCUMULATION**
- RSI (14): BUY
- STOCH (9,6): BUY
- MACD(12,26): BUY
- VO: BUY
- BANDARMOLOGY: TOP 5 BROKER ACCUMULATED | PERIODE (10 DAYS): DISTRIBUTION | NET BUY SELL ASING: PERIODE (10 DAYS): ACCUMULATION



### PT Sarimelati Kencana Tbk (PZZA)

- PZZA 970 - 1110
- TECHNICAL INDICATORS: **STRONG BUY**
- RSI (14): BUY
- STOCH (9,6): NEUTRAL
- MACD(12,26): BUY
- VO: BUY
- BANDARMOLOGY: TOP 5 BROKER ACCUMULATED | PERIODE (10 DAYS): ACCUMULATION | NET BUY SELL ASING: PERIODE (10 DAYS): ACCUMULATION



### PT Bank CIMB Niaga Tbk (BNGA)

- BNGA 1100 - 1190
- TECHNICAL INDICATORS: **STRONG BUY**
- RSI (14): OVERBOUGHT
- STOCH (9,6): BUY
- MACD(12,26): BUY
- VO: BUY
- BANDARMOLOGY: TOP 5 BROKER ACCUMULATED | PERIODE (10 DAYS): ACCUMULATION | NET BUY SELL ASING: PERIODE (10 DAYS): DISTRIBUTION



## PT PP Presisi Tbk (PPRE)

- PPRE 342 - 365
- TECHNICAL INDICATORS: **STRONG BUY**
- RSI (14): NEUTRAL
- STOCH (9,6): NEUTRAL
- MACD(12,26): BUY
- VO: BUY
- BANDARMOLOGY: TOP 5 BROKER ACCUMULATED | PERIODE (10 DAYS): DISTRIBU-TION | NET BUY SELL ASING: PERIODE (10 DAYS): ACCUMULATION



## PT Surya Esa Perkasa Tbk (ESSA)

- ESSA 366 - 390
- TECHNICAL INDICATORS: **STRONG BUY**
- RSI (14): BUY
- STOCH (9,6): BUY
- MACD(12,26): BUY
- VO: BUY
- BANDARMOLOGY: TOP 5 BROKER ACCUMULATED | PERIODE (10 DAYS): DISTRIBU-TION | NET BUY SELL ASING: PERIODE (10 DAYS): DISTRIBUTION



## PT Japfa Comfeed Indonesia Tbk (JPFA)

- JPFA 2180 - 2380
- TECHNICAL INDICATORS: **STRONG BUY**
- RSI (14): BUY
- STOCH (9,6): NEUTRAL
- MACD(12,26): BUY
- VO: SELL
- BANDARMOLOGY: TOP 5 BROKER ACCUMULATED | PERIODE (10 DAYS): DISTRIBU-TION | NET BUY SELL ASING: PERIODE (10 DAYS): DISTRIBUTION



## MNC36 Stock Metrics

Ticker	ROE 5YR	P/E	P/BV	VWAP	TP	Support 2	Support 1	Price	Resist 1	Reseist 2	Recommendation
<b>FINANCIAL</b>											
BBCA	18.80	27.38	4.76	27356	27000	26550	27200	27600	28250	28650	Spec BUY
BBNI	15.17	11.56	1.69	9271	9500	9081	9138	9256	9313	9431	Trading SELL
BBRI	19.07	14.53	2.68	3807	3975	3778	3785	3808	3815	3838	Trading SELL
BBTN	15.10	8.99	1.26	2777	2921	2723	2745	2773	2795	2823	Trading SELL
BDMN	9.45	N/A	N/A	N/A	7300	N/A	N/A	N/A	N/A	N/A	N/A
BJTM	15.85	8.94	1.31	720	700	710	715	720	725	730	Neutral
BMRI	13.39	15.38	2.11	7854	8337.5	7725	7750	7825	7850	7925	Trading SELL
BNGA	8.78	8.44	0.74	1120	1195	1078	1115	1128	1165	1178	Spec BUY
BTPN	8.58	14.35	1.20	3668	4500	3643	3665	3673	3695	3703	Spec BUY
ACES	25.09	32.04	7.97	1782	1760	1750	1770	1780	1800	1810	Spec BUY
MAPI	12.93	26.65	2.97	947	1050	900	910	940	950	980	Trading SELL
SCMA	34.24	19.88	6.20	1949	2225	1899	1918	1944	1963	1989	Trading SELL
UNTR	19.42	9.24	1.93	26918	42000	26631	26713	26906	26988	27181	Trading SELL
<b>PROPERTY AND REAL ESTATE</b>											
PWON	20.26	14.46	2.73	667	710	650	660	670	680	690	Neutral
WSKT	34.25	5.21	1.57	2042	2160	1948	1975	2038	2065	2128	Trading SELL
<b>CONSUMER</b>											
GGRM	19.39	19.67	3.71	82903	94750	82119	82338	82994	83213	83869	Trading SELL
ICBP	20.87	28.06	5.70	10228	10400	10125	10150	10225	10250	10325	Trading SELL
KAEF	13.89	39.79	5.48	2581	2600	2533	2555	2583	2605	2633	Trading SELL
KLBF	18.86	30.98	5.40	1613	1400	1594	1598	1609	1613	1624	Trading SELL
MYOR	24.38	32.38	7.41	2580	2800	2480	2510	2580	2610	2680	Trading SELL
SIDO	20.27	19.03	4.08	817	980	799	803	814	818	829	Trading SELL
UNVR	121.48	40.97	41.47	48960	44250	48331	48513	48806	48988	49281	Trading SELL
<b>MISCELLANEOUS INDUSTRY</b>											
ASII	16.18	15.48	2.54	8409	9200	8125	8200	8375	8450	8625	Trading SELL
<b>AGRICULTURE</b>											
SSMS	19.17	22.19	2.67	1207	1300	1176	1193	1211	1228	1246	Trading SELL
<b>BASIC INDUSTRY</b>											
INKP	15.88	7.15	1.24	12218	15062.5	11400	11600	12100	12300	12800	Trading SELL
JPFA	15.43	14.14	2.88	2226	2700	2153	2195	2223	2265	2293	Spec BUY
SMGR	7.86	29.16	2.55	12963	12800	12494	12763	12919	13188	13344	Spec BUY

<i>Ticker</i>	<i>ROE 5YR</i>	<i>P/E</i>	<i>P/BV</i>	<i>VWAP</i>	<i>TP</i>	<i>Support 2</i>	<i>Support 1</i>	<i>Price</i>	<i>Resist 1</i>	<i>Reseist 2</i>	<i>Recommendation</i>
<b>INFRASTRUCTURE</b>											
INDY	36.80	2.13	0.77	2183	2150	2003	2055	2153	2205	2303	Trading SELL
JSMR	15.56	16.98	2.17	4887	5400	4735	4780	4855	4900	4975	Trading SELL
PGAS	5.86	15.97	1.28	2460	2500	2380	2430	2460	2510	2540	Spec BUY
TLKM	23.13	21.63	4.41	4033	4350	4003	4015	4033	4045	4063	Trading SELL
<b>MINING</b>											
ADRO	13.75	7.80	0.90	1474	2075	1413	1440	1473	1500	1533	Trading SELL
ANTM	2.46	18.70	1.07	859	1107.5	838	845	858	865	878	Trading SELL
ITMG	27.42	6.50	1.79	23301	30000	22369	22913	23244	23788	24119	Spec BUY
PTBA	38.75	8.15	3.21	4473	5000	4428	4445	4478	4495	4528	Trading SELL
<b>COMPANY GROUP</b>											
BHIT	-1.32	N/A	0.26	68	--	62	65	68	71	74	--
BMTR	4.00	11.61	0.52	341	--	319	325	341	347	363	--
MNCN	14.20	8.46	1.08	844	1060	776	793	841	858	906	--
BABP	-29.54	N/A	0.79	50	--	49	50	50	51	51	--
BCAP	-4.39	N/A	1.18	150	--	144	149	152	157	160	--
IATA	-18.83	N/A	0.91	50	--	50	50	50	50	50	--
KPIG	10.70	7.48	0.79	130	--	123	126	132	135	141	--
MSKY	-16.21	N/A	3.85	863	--	781	808	836	863	891	--

Source: Bloomberg and MNCS

### Trading Summary

TOP TRADING VOLUME			TOP TRADING VALUE			TOP GAINERS			TOP LOSERS		
Code	(Mill Sh)	%	Code	(Bill.Rp)	%	Code	Chg	%	Code	Chg	%
MABA	1,366	12.5	BBCA	658	9.3	NATO	+61	+34.9	MTSN	-49	-23.8
HOME	1,098	10.0	BMRI	549	7.7	CLAY	+76	+24.8	AGRS	-88	-18.0
BUMI	939	8.6	BBRI	407	5.7	SQMI	+94	+24.6	PADI	-170	-15.6
MYRX	627	5.7	ASII	378	5.3	YPAS	+135	+23.5	CANI	-38	-15.3
BRMS	569	5.2	TLKM	373	5.3	HEXA	+680	+23.3	NAGA	-40	-14.3

Source: IDX

### IPO Schedule

Company	Code	IPO Price (IDR)	Issued Share (Mn)	Offering Start-End	Listing
PT Nusantara Properti Internasional Tbk	NATO	103	2.000 (25%)	15/01/2019	18/01/2019
PT Citra Putra Realty Tbk	CLAY	180	520 (20.23%)	14/01/2019	18/01/2019

Source: RTI

### Dividend Schedule

Company	Code	Price	Cum Date	Ex Date	Recording Date	Payment Date
PT Adaro Energy Tbk	ADRO	USD 0.00235	27/12/2018	28/12/2018	02/01/2019	15/01/2019

Source: RTI

### Right Issue Schedule

Company	Code	Price	Ratio	Cum Date	Ex Date	Recording Date	Subscription Date
PT Verena Multi Finance	VRNA	140	120:100	09/01/2019	10/01/2019	11/01/2019	21/01/2019
PT Kirana Megatara	KMTR	530	2000:13969	24/01/2019	25/01/2019	28/01/2019	06/02/2019

Source: RTI

### Economic Calendar

Date	Country	Event	Actual	Previous	Consensus
01/22	US	Existing Home Sales MoM DEC	-	1.9%	-1.0%
01/22	US	Existing Home Sales DEC	-	5.32M	5.24M
01/22	GB	Unemployment Rate NOV	-	4.1%	4.1%
01/22	JP	Balance of Trade DEC	-	¥-737B	¥-29.5B

Source: Trading Economics

## MNC SEKURITAS RESEARCH TEAM

### Edwin J. Sebayang

Head of Retail Research, Technical, Auto, Mining  
edwin.sebayang@mncgroup.com  
(021) 2980 3111 ext. 52233

### Thendra Crisnanda

Head of Institutional Research, Strategy  
thendra.crisnanda@mncgroup.com  
(021) 2980 3111 ext. 52162

### I Made Adi Saputra

Head of Fixed Income Research  
imade.saputra@mncgroup.com  
(021) 2980 3111 ext. 52117

### Tomy Zulfikar

Research Analyst  
tomy.zulfikar@mncgroup.com  
(021) 2980 3111 ext. 52316

### Victoria Venny

Telco, Toll Road, Logistics, Consumer, Poultry  
victoria.nawang@mncgroup.com  
(021) 2980 3111 ext. 52236

### Rr. Nurulita Harwaningrum

Banking, Auto, Plantation  
roro.harwaningrum@mncgroup.com  
(021) 2980 3111 ext. 52237

### Khazar Srikandi

Research Associate  
khazar.srikandi@mncgroup.com  
(021) 2980 3111 ext. 52313

### M. Rudy Setiawan

Research Associate, Construction  
muhamad.setiawan@mncgroup.com  
(021) 2980 3111 ext. 52317

### Krestanti Nugrahane Widhi

Research Associate, Plantation, Consumer  
krestanti.widhi@mncgroup.com  
(021) 2980 3111 ext. 52166

### T. Herditya Wicaksana

Technical Analyst  
herditya.wicaksana@mncgroup.com  
(021) 2980 3111 ext. 52150

### Ikhsan Hadi Santoso

Junior Analyst of Fixed Income  
ikhsan.santoso@mncgroup.com  
(021) 2980 3111 ext. 52235

### Sukisnawati Puspitasari

Research Associate, Cement, Mining  
sukisnawati.sari@mncgroup.com  
(021) 2980 3111 ext. 52307

## PT MNC Sekuritas

MNC Financial Center Lt. 14 – 16

Jl. Kebon Sirih No. 21 - 27, Jakarta Pusat 10340

Telp : (021) 2980 3111

Fax : (021) 3983 6899

### Disclaimer

*This research report has been issued by PT MNC Sekuritas. It may not be reproduced or further distributed or published, in whole or in part, for any purpose. PT MNC Sekuritas has based this document on information obtained from sources it believes to be reliable but which it has not independently verified; PT MNC Sekuritas makes no guarantee, representation or warranty and accepts no responsibility to liability as to its accuracy or completeness. Expression of opinion herein are those of the research department only and are subject to change without notice. This document is not and should not be construed as an offer or the solicitation of an offer to purchase or subscribe or sell any investment. PT MNC Sekuritas and its affiliates and/or their offices, directors and employees may own or have positions in any investment mentioned herein or any investment related thereto and may from time to time add to or dispose of any such investment. PT MNC Sekuritas and its affiliates may act as market maker or have assumed an underwriting position in the securities of companies discussed herein (or investment related thereto) and may sell them to or buy them from customers on a principal basis and may also perform or seek to perform investment banking or underwriting services for or relating to those companies.*