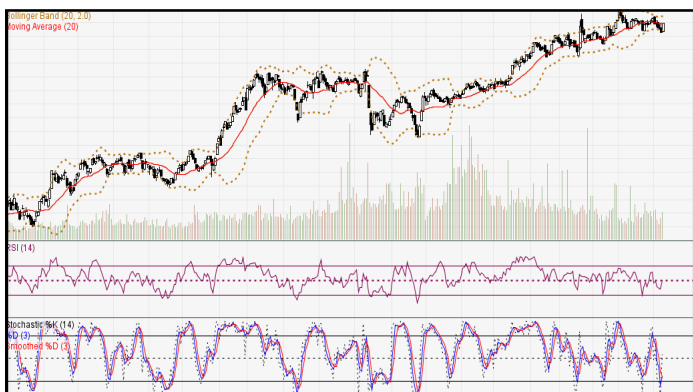


DAILY TECHNICAL

MNC Sekuritas Research Division
10 Agustus 2017



IDX-Composite



IDX Composite 5,789 - 5,835

Pola *Hammer* terbentuk atas IDX mengindikasikan peluang terjadinya *PROFIT TAKING* dihari Jumat.

United Tractor (UNTR)

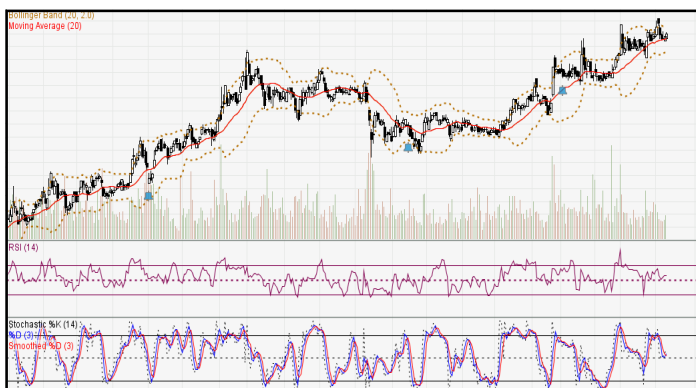


UNTR 29775-30800 (TP 2017F:28500)

Pola *Three White Soldiers Up* terbentuk atas UNTR mengindikasikan *Bullish Continuation*.

BUY 30425

Telekomunikasi Indonesia (Persero) Tbk (TLKM)



TLKM 4670-4740 (TP 2017F: 5000).

Pola *Spinning Tops* terbentuk atas TLKM mengindikasikan peluang terjadinya *Profit Taking*.

BOW 4700

Semen Indonesia (Persero) Tbk (SMGR)



SMGR 10700-11100 (TP 2017F:9200)

Pola *Spinning Tops* terbentuk atas SMGR mengindikasikan peluang terjadinya *Profit Taking*.

BOW 10875

Research MNC Sekuritas
research@mncsecurities.com
(021) 2980 3111 (Hunting)

Bank Negara Indonesia Tbk (BBNI)



BBNI 7200-7400 (TP 2017F:7400)

Pola *Short Black Candle* terbentuk atas BBNI mengindikasikan melambatnya aksi beli.

BUY 7275

Pembangunan Perumahan (PTPP)

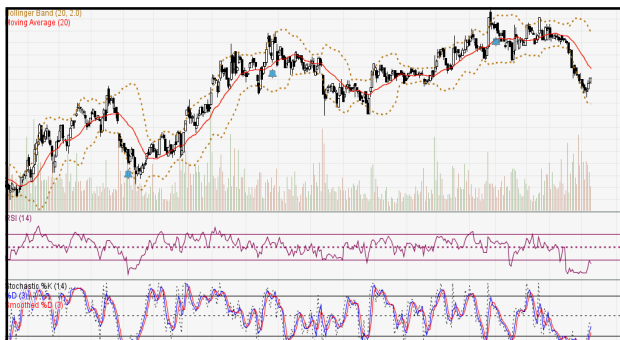


PTPP 2950-3040 (TP 2017F:4500)

Pola *Bullish Harami* terbentuk atas PTPP mengindikasikan *Bullish Reversal*.

BUY 3000

Astra Internasional Tbk (ASII)



ASII 7775-8075 (TP 2017F:9550).

Pola *Black Candle* terbentuk atas ASII mengindikasikan *Bearish Reversal*.

BOW 7875

Wijaya Karya Tbk (WIKA)

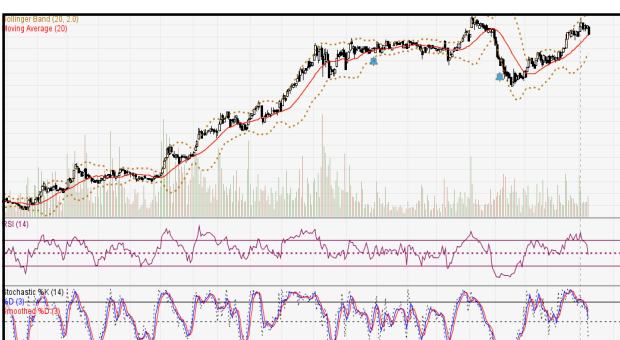


WIKA 2010-2100 (TP 2017F:3250)

Pola *Bearish Separating Line* terbentuk atas WIKA mengindikasikan *Bearish Reversal*.

BOW 2050

Adaro Energy Tbk (ADRO)



ADRO 1800-1880 (TP 2017F:2330)

Pola *Bullish Harami* terbentuk atas ADRO mengindikasikan *Bullish Reversal*.

BUY 1850

Gudang Garam Tbk (GGRM)



GGRM 65775-68550 (TP 2017F:81150)

Pola *Bullish Harami* terbentuk atas GGRM mengindikasikan *Bullish Reversal*.

BUY 66900

Stocks Pick:

1. PTBA (TP 2017F:15100)

Recommendation:

#Sell at/below 13400. Target 13200 (Call Valid for First 3 hours)

#Sell at/below 12975. Target 12800 (Call Valid for full day)

**Buy at/above 12800. Target 13100 (Call Valid only if low for today is below 12800)*

**Buy at/above 13000. Target 13200. (Call Valid only if low for today is below 12800)*

2. CPIN (TP 2017F:3550)

Recommendation:

**Buy at/above 2820. Target 2850. Stoploss 2805 (Call Valid For First 3 hours)*

**Buy at/above 2890 Target 2910. Stoploss 2870 (Call Valid For Full Day)*

Sell at/below 2910. Target 2865. Stoploss 2940 (Call Valid Only If High For Today is Above 2910)

#Sell at/below 2880. Target 2850. Stoploss 2895 (Call Valid Only If High For Today is Above 2810)

3. AKRA (TP 2017F:7200)

Recommendation:

#Sell at/below 6575. Target 6500 (Call Valid for First 3 hours)

#Sell at/below 6425. Target 6350 (Call Valid for full day)

**Buy at/above 6425. Target 6500 (Call Valid only if low for today is below 6350)*

**Buy at/above 6425. Target 6500. (Call Valid only if low for today is below 6350)*

4. ITMG (TP 2017F:21250)

Recommendation:

**Buy at/above 20100. Target 20250. Stoploss 20050 (Call Valid For First 3 hours)*

**Buy at/above 20400 Target 20525. Stoploss 20325 (Call Valid For Full Day)*

Sell at/below 20525. Target 20300. Stoploss 20650 (Call Valid Only If High For Today is Above 20525)

#Sell at/below 20375. Target 20250. Stoploss 20450 (Call Valid Only If High For Today is Above 20525)

5. PGAS (TP 2017F:2500)

Recommendation:

#Sell at/below 2200. Target 2170 (Call Valid for First 3 hours)

#Sell at/below 2130. Target 2100 (Call Valid for full day)

**Buy at/above 2100. Target 2150 (Call Valid only if low for today is below 2100)*

**Buy at/above 2140. Target 2170. (Call Valid only if low for today is below 2100)*

6. JPFA (TP 2017F:1740)

Recommendation:

#Sell at/below 1130. Target 1110 (Call Valid for First 3 hours)

#Sell at/below 1090. Target 1070 (Call Valid for full day)

**Buy at/above 1070. Target 1100 (Call Valid only if low for today is below 1070)*

**Buy at/above 1090. Target 1110. (Call Valid only if low for today is below 1070)*

MNC SEKURITAS RESEARCH TEAM

Edwin J. Sebayang
Head of Retail Research
Technical, Auto, Mining
edwin.sebayang@mncgroup.com
(021) 2980 3111 ext. 52233

I Made Adi Saputra
Head of Fixed Income Research
imade.saputra@mncgroup.com
(021) 2980 3111 ext. 52117

Thendra Crisnanda
Head of Institution Research
thendra.crisnanda@mncgroup.com
(021) 2980 3111 ext. 52162

Victoria Venny
Telco, Infrastructure, Logistics
victoria.nawang@mncgroup.com
(021) 2980 3111 ext. 52236

Rheza Dewangga Nugraha
Junior Analyst of Fixed Income
rheza.nugraha@mncgroup.com
(021) 2980 3111 ext. 52294

Gilang Anindito
Property, Construction
gilang.dhiroboto@mncgroup.com
(021) 2980 3111 ext. 52235

Rr. Nurulita Harwaningrum
Banking
roro.harwaningrum@mncgroup.com
(021) 2980 3111 ext. 52237

Yosua Zisokhi
Plantation, Cement, Poultry, Cigarette
yosua.zisokhi@mncgroup.com
(021) 2980 3111 ext. 52234

Krestanti Nugrahane Widhi
Research Associate
krestanti.widhi@mncgroup.com
(021) 2980 3111 ext. 52166

Sukisnawati Puspitasari
Research Associate
sukisnawati.sari@mncgroup.com
(021) 2980 3111 ext. 52307

MNC Research Investment Ratings Guidance

- BUY** : Share price may exceed 10% over the next 12 months
HOLD : Share price may fall within the range of +/- 10% of the next 12 months
SELL : Share price may fall by more than 10% over the next 12 months
Not Rated : Stock is not within regular research coverage

PT MNC Sekuritas

MNC Financial Center Lt. 14 – 16
 Jl. Kebon Sirih No. 21 - 27, Jakarta Pusat 10340
 Telp : (021) 2980 3111
 Fax : (021) 3983 6899
 Call Center : 1500 899

Disclaimer

This research report has been issued by PT MNC Sekuritas. It may not be reproduced or further distributed or published, in whole or in part, for any purpose. PT MNC Sekuritas has based this document on information obtained from sources it believes to be reliable but which it has not independently verified; PT MNC Sekuritas makes no guarantee, representation or warranty and accepts no responsibility to liability as to its accuracy or completeness. Expression of opinion herein are those of the research department only and are subject to change without notice. This document is not and should not be construed as an offer or the solicitation of an offer to purchase or subscribe or sell any investment. PT MNC Sekuritas and its affiliates and/or their offices, directors and employees may own or have positions in any investment mentioned herein or any investment related thereto and may from time to time add to or dispose of any such investment. PT MNC Sekuritas and its affiliates may act as market maker or have assumed an underwriting position in the securities of companies discussed herein (or investment related thereto) and may sell them to or buy them from customers on a principal basis and may also perform or seek to perform investment banking or underwriting services for or relating to those companies.