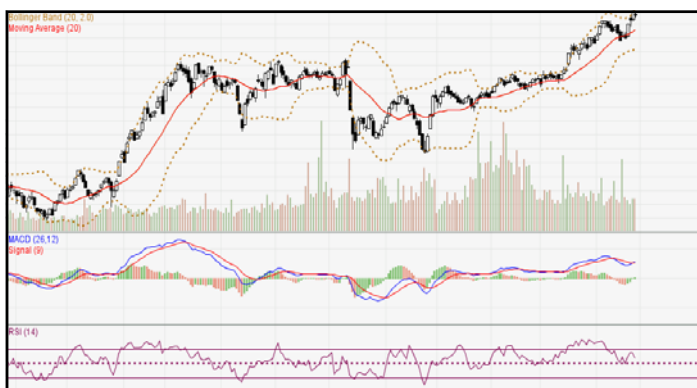




## IDX-Composite



**IDX Composite 5,673 - 5,743**

Pola *Bearish Harami Cross* terbentuk atas IDX mengindikasikan munculnya *profit taking* dihari Jumat.

## United Tractor (UNTR)



**UNTR 26650-28200 (TP 2017F:28500)**

Pola *Bearish Harami* terbentuk atas UNTR mengindikasikan *Bearish Reversal*  
**BOW 27200**

## Telekomunikasi Indonesia (Persero) Tbk (TLKM)



**TLKM 4335-4415 (TP 2017F: 5100)**

Pola *Bearish Meeting Line* terbentuk atas TLKM mengindikasikan *Bearish Reversal*  
**BOW 4360**

## Semen Indonesia (Persero) Tbk (SMGR)



**SMGR 8700-9050 (TP 2017F:10500)**

Pola *Black Closing Marubozu* terbentuk atas SMGR mengindikasikan *Bearish Reversal*  
**BOW 8800**

### Bank Negara Indonesia Tbk (BBNI)



**BBNI 6300-6450 (TP 2017F:6500)**  
 Pola *Bearish Harami* terbentuk atas BBNI  
 mengindikasikan melambatnya aksi beli.  
**BOW 6350**

### Pembangunan Perumahan (PTPP)



**PTPP 3150-3285 (TP 2017F:5200)**  
 Pola *Bullish Harami Cross* terbentuk atas PTPP  
 mengindikasikan munculnya aksi beli  
**BUY 3200**

### Astra Internasional Tbk (ASII)



**ASII 8850-9175 (NEW TP 2017F:9550)**  
 Pola *Morning Doji Star* terbentuk atas ASII  
 mengindikasikan melambatnya aksi jual  
**BOW 8975**

### Wijaya Karya Tbk (WIKA)



**WIKA 2345-2445 (TP 2017F:3670)**  
 Pola *Inverted Hammer* terbentuk atas WIKA  
 mengindikasikan munculnya aksi beli  
**BUY 2380**

### Charoen Pokhand Indonesia Tbk (CPIN)



**CPIN 3235-3330 (TP 2017F:4300)**  
 Pola *Three Outside Down* terbentuk atas CPIN  
 mengindikasikan *Bearish Continuation*  
**BOW 3270**

### Gudang Garam Tbk (GGRM)



**GGRM 65300-68100 (TP 2016F:77850)**  
 Pola *Four White Soldiers* terbentuk atas GGRM  
 mengindikasikan *Bullish Continuation*.  
**BUY 66400**

Stocks Pick:

**1. PTBA (TP 2017F:19675)**

Recommendation:

\*Buy at/above 12775. Target 12900. Stoploss 12725 (Call Valid For First 3 hours)

\*Buy at/above 13000. Target 13125. Stoploss 12950 (Call Valid For Full Day)

#Sell at/below 13125. Target 12950. Stoploss 13200 (Call Valid Only If High For Today is Above 13125)

#Sell at/below 13000. Target 12900. Stoploss 13050 (Call Valid Only If High For Today is Above 13125)

**2. ISSP (TP 2017F:307)**

Recommendation:

\*Buy at/above 239. Target 241. Stoploss 239 (Call Valid For First 3 hours)

\*Buy at/above 243. Target 244. Stoploss 242 (Call Valid For Full Day)

#Sell at/below 244. Target 242. Stoploss 245 (Call Valid Only If High For Today is Above 244)

#Sell at/below 242. Target 241. Stoploss 243 (Call Valid Only If High For Today is Above 244)

**3. AKRA (TP 2017F:7200)**

Recommendation:

#Sell at/below 6825. Target 6750 (Call Valid for First 3 hours)

#Sell at/below 6650. Target 6575 (Call Valid for full day)

\*Buy at/above 6575. Target 6700 (Call Valid only if low for today is below 6575)

\*Buy at/above 6650. Target 6750 (Call Valid only if low for today is below 6575)

**4. ITMG (TP 2017F:21250)**

Recommendation:

#Sell at/below 19650. Target 19575 (Call Valid for First 3 hours)

#Sell at/below 19500. Target 19425 (Call Valid for full day)

\*Buy at/above 19425. Target 19550 (Call Valid only if low for today is below 19425)

\*Buy at/above 19500. Target 19575 (Call Valid only if low for today is below 19425)

**5. PGAS (TP 2017F:3125)**

Recommendation:

\*Buy at/above 2470. Target 2480. Stoploss 2470 (Call Valid For First 3 hours)

\*Buy at/above 2490. Target 2500. Stoploss 2485 (Call Valid For Full Day)

#Sell at/below 2495. Target 2485. Stoploss 2500 (Call Valid Only If High For Today is Above 2495)

#Sell at/below 2490. Target 2480. Stoploss 2490 (Call Valid Only If High For Today is Above 2495)

**6. JPFA (TP 2017F:1800)**

Recommendation:

Buy at/above 1545. Target 1555. Stoploss 1540 (Call Valid For First 3 hours)

\*Buy at/above 1565. Target 1575. Stoploss 1560 (Call Valid For Full Day)

#Sell at/below 1575. Target 1560. Stoploss 1580 (Call Valid Only If High For Today is Above 1575)

#Sell at/below 1565. Target 1555. Stoploss 1570 (Call Valid Only If High For Today is Above 1575)

## MNC SEKURITAS RESEARCH TEAM

### Edwin J. Sebayang

Head of Retail Research, Technical, Auto, Mining  
edwin.sebayang@mncgroup.com  
(021) 2980 3111 ext. 52233

### I Made Adsaputra

Head of Fixed Income Research  
imade.saputra@mncgroup.com  
(021) 2980 3111 ext. 52117

### Victoria Venny

Telco, Infrastructure, Logistics  
victoria.nawang@mncgroup.com  
(021) 2980 3111 ext. 52236

### Gilang Anindito

Property, Construction  
gilang.dhirobrotto@mncgroup.com  
(021) 2980 3111 ext. 52235

### Rr. Nurulita Harwaningrum

Banking  
roro.harwaningrum@mncgroup.com  
(021) 2980 3111 ext. 52237

### Yosua Zisokhi

Plantation, Cement, Poultry, Cigarette  
yosua.zisokhi@mncgroup.com  
(021) 2980 3111 ext. 52234

### Krestanti Nugrahane

Research Associate  
krestanti.widhi@mncgroup.com  
(021) 2980 3111 ext. 52166

### Sukisnawati Puspitasari

Research Associate  
sukisnawati.sari@mncgroup.com  
(021) 2980 3111 ext. 52307

### MNC Research Investment Ratings Guidance

**BUY** : Share price may exceed 10% over the next 12 months

**HOLD** : Share price may fall within the range of +/- 10% of the next 12 months

**SELL** : Share price may fall by more than 10% over the next 12 months

**Not Rated** : Stock is not within regular research coverage

## PT MNC Sekuritas

MNC Financial Center Lt. 14 – 16

Jl. Kebon Sirih No. 21 - 27, Jakarta Pusat 10340

Telp : (021) 2980 3111

Fax : (021) 3983 6899

Call Center : 1500 899

### Disclaimer

*This research report has been issued by PT MNC Sekuritas. It may not be reproduced or further distributed or published, in whole or in part, for any purpose. PT MNC Sekuritas has based this document on information obtained from sources it believes to be reliable but which it has not independently verified; PT MNC Sekuritas makes no guarantee, representation or warranty and accepts no responsibility to liability as to its accuracy or completeness. Expression of opinion herein are those of the research department only and are subject to change without notice. This document is not and should not be construed as an offer or the solicitation of an offer to purchase or subscribe or sell any investment. PT MNC Sekuritas and its affiliates and/or their offices, directors and employees may own or have positions in any investment mentioned herein or any investment related thereto and may from time to time add to or dispose of any such investment. PT MNC Sekuritas and its affiliates may act as market maker or have assumed an underwriting position in the securities of companies discussed herein (or investment related thereto) and may sell them to or buy them from customers on a principal basis and may also perform or seek to perform investment banking or underwriting services for or relating to those companies.*