

# DAILY TECHNICAL

MNC Sekuritas Research Division

06 December 2017



## IDX-Composite



IDX Composite 5,982 - 6,053  
Pola Homing Pigeon terbentuk atas IDX mengindikasikan melambatnya aksi beli dihari Rabu.

## United Tractor (UNTR)



UNTR 32175-33150 (TP 2018F:38500) Pola Three Black.Crows terbentuk atas UNTR mengindikasikan Bearish Continuation. BOW 32675

## Telekomunikasi Indonesia (Persero)Tbk (TLKM)



TLKM 4160-4240 (TP 2018F: 4950). Pola Spinning Tops terbentuk atas TLKM mengindikasikan melambatnya aksi beli. BUY 4200

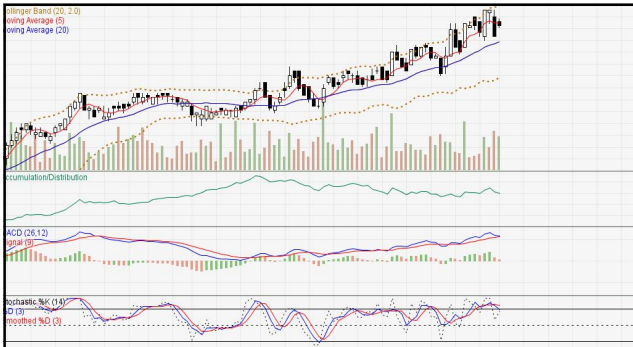
## Semen Indonesia (Persero) Tbk (SMGR)



SMGR 9150-9700 (TP 2017F:9200). Pola Two Black Crows terbentuk atas SMGR mengindikasikan Bearish Continuation. BOW 9325

Research MNC Sekuritas  
[research@mncsecurities.com](mailto:research@mncsecurities.com)  
(021) 2980 3111 (Hunting)

**Bank Negara Indonesia Tbk (BBNI)**



**BBNI 8325-8550 (TP 2017F:8000) Pola Bullish Kicking terbentuk atas BBNI mengindikasikan Bullish Continuation. BUY 8450**

**Pembangunan Perumahan (PTPP)**



**PTPP 2360-2570 (TP 2017F:4000) Pola Black Opening Marubozu terbentuk atas PTPP mengindikasikan Bearish Reversal. BOW 2490**

**Astra Internasional Tbk (ASII)**



**ASII 8100-8375 (TP 2017F:8500). Pola Bullish Harami terbentuk atas ASII mengindikasikan Bullish Continuation. BUY 8200**

**Wijaya Karya Tbk (WIKA)**



**WIKA 1590-1790 (TP 2017F:3000) Pola Nine Black Crows terbentuk atas WIKA mengindikasikan Bearish Continuation. BOW 1655**

**Adaro Energy Tbk (ADRO)**



**ADRO 1750-1830 (TP 2017F:2330) Pola Three Inside Up terbentuk atas ADRO mengindikasikan Bullish Continuation. BUY 1780**

**Gudang Garam Tbk (GGRM)**



**GGRM 78900-82400 (TP 2017F:81150) Pola Morning Doji Star terbentuk atas GGRM mengindikasikan melambatnya aksi beli. BUY 80300**

*Stocks Pick:**1. TPIA (TP 2017F:6300)**Recommendation:*

*\*Buy at/above 5450. Target 5500. Stoploss 5400 (Call Valid For First 3 hours)*

*\*Buy at/above 5575. Target 5650. Stoploss 5550 (Call Valid For Full Day)*

*#Sell at/below 5650. Target 5525. Stoploss 5700 (Call Valid Only If High For Today is Above 5625)*

*#Sell at/below 5575. Target 5500. Stoploss 5600 (Call Valid Only If High For Today is Above 5625)*

*2. CPIN (TP 2017F:3550)**Recommendation:*

*\*Buy at/above 2850. Target 2870. Stoploss 2840 (Call Valid For First 3 hours)*

*\*Buy at/above 2895. Target 2915. Stoploss 2885 (Call Valid For Full Day)*

*#Sell at/below 2915. Target 2880. Stoploss 2930 (Call Valid Only If High For Today is Above 2915)*

*#Sell at/below 2890. Target 2870. Stoploss 2900 (Call Valid Only If High For Today is Above 2915)*

*3. AKRA (TP 2017F:7200)**Recommendation:*

*\*Buy at/above 6225. Target 6425. Stoploss 6150 (Call Valid For First 3 hours)*

*\*Buy at/above 6625. Target 6800. Stoploss 6525 (Call Valid For Full Day)*

*#Sell at/below 6800. Target 6500. Stoploss 6950 (Call Valid Only If High For Today is Above 6800)*

*#Sell at/below 6600. Target 6425. Stoploss 6700 (Call Valid Only If High For Today is Above 6800)*

*4. PGAS (TP 2017F:1910)**Recommendation:*

*\*Buy at/above 1640. Target 1665. Stoploss 1630 (Call Valid For First 3 hours)*

*\*Buy at/above 1690. Target 1715. Stoploss 1680 (Call Valid For Full Day)*

*#Sell at/below 1715. Target 1680. Stoploss 1730 (Call Valid Only If High For Today is Above 1715)*

*#Sell at/below 1690. Target 1665. Stoploss 1700 (Call Valid Only If High For Today is Above 1715)*

*5. ITMG (TP 2018F:25325)**Recommendation:*

*\*Buy at/above 21050. Target 24125. Stoploss 19525 (Call Valid For First 3 hours)*

*\*Buy at/above 27550. Target 30600. Stoploss 26000 (Call Valid For Full Day)*

*#Sell at/below 30600. Target 25650. Stoploss 33075 (Call Valid Only If High For Today is Above 30600)*

*#Sell at/below 27175. Target 24125. Stoploss 28700 (Call Valid Only If High For Today is Above 30600)*

*6. TOTL (TP 2017F:975)**Recommendation:*

*\*Buy at/above 660. Target 665. Stoploss 660 (Call Valid For First 3 hours)*

*\*Buy at/above 670. Target 670. Stoploss 670 (Call Valid For Full Day)*

*Sell at/below 670. Target 670. Stoploss 680 (Call Valid Only If High For Today is Above 670)*

*#Sell at/below 670. Target 665. Stoploss 670 (Call Valid Only If High For Today is Above 670)*

## MNC SEKURITAS RESEARCH TEAM

### Thendra Crisnanda

Head of Institutional Research, Strategy  
thendra.crisnanda@mncgroup.com  
(021) 2980 3111 ext. 52162

### Edwin J. Sebayang

Head of Retail Research, Technical, Auto, Mining  
edwin.sebayang@mncgroup.com  
(021) 2980 3111 ext. 52233

### I Made Adi Saputra

Head of Fixed Income Research  
imade.saputra@mncgroup.com  
(021) 2980 3111 ext. 52117

### Victoria Venny

Telco, Toll Road, Logistics, Consumer, Poultry  
victoria.nawang@mncgroup.com  
(021) 2980 3111 ext. 52236

### Gilang Anindito

Property, Construction, Mining, Media  
gilang.dhiroboto@mncgroup.com  
(021) 2980 3111 ext. 52235

### Rheza Dewangga Nugraha

Junior Analyst of Fixed Income  
rheza.nugraha@mncgroup.com  
(021) 2980 3111 ext. 52294

### Rr. Nurulita Harwaningrum

Banking, Auto, Plantation  
roro.harwaningrum@mncgroup.com  
(021) 2980 3111 ext. 52237

### Krestanti Nugrahane Widhi

Research Associate, Plantation, Consumer  
krestanti.widhi@mncgroup.com  
(021) 2980 3111 ext. 52166

### Sukisnawati Puspitasari

Research Associate, Cement, Mining  
sukisnawati.sari@mncgroup.com  
(021) 2980 3111 ext. 52307

### MNC Research Investment Ratings Guidance

**BUY** : Share price may exceed 10% over the next 12 months

**HOLD** : Share price may fall within the range of +/- 10% of the next 12 months

**SELL** : Share price may fall by more than 10% over the next 12 months

**Not Rated** : Stock is not within regular research coverage

## PT MNC Sekuritas

MNC Financial Center Lt. 14 – 16

Jl. Kebon Sirih No. 21 - 27, Jakarta Pusat 10340

Telp : (021) 2980 3111

Fax : (021) 3983 6899

Call Center : 1500 899

### Disclaimer

*This research report has been issued by PT MNC Sekuritas. It may not be reproduced or further distributed or published, in whole or in part, for any purpose. PT MNC Sekuritas has based this document on information obtained from sources it believes to be reliable but which it has not independently verified; PT MNC Sekuritas makes no guarantee, representation or warranty and accepts no responsibility to liability as to its accuracy or completeness. Expression of opinion herein are those of the research department only and are subject to change without notice. This document is not and should not be construed as an offer or the solicitation of an offer to purchase or subscribe or sell any investment. PT MNC Sekuritas and its affiliates and/or their offices, directors and employees may own or have positions in any investment mentioned herein or any investment related thereto and may from time to time add to or dispose of any such investment. PT MNC Sekuritas and its affiliates may act as market maker or have assumed an underwriting position in the securities of companies discussed herein (or investment related thereto) and may sell them to or buy them from customers on a principal basis and may also perform or seek to perform investment banking or underwriting services for or relating to those companies.*