



## IDX-Composite



IDX Composite 5,980 - 6,032

Pola Bearish Harami terbentuk atas IDX mengindikasikan Bearish Reversal dihari Jumat.

## United Tractor (UNTR)



UNTR 32750-33300 (TP 2018F:38500)

Pola Bullish Engulfing terbentuk atas UNTR mengindikasikan Bullish Reversal.  
BUY 33000

## Telekomunikasi Indonesia (Persero) Tbk (TLKM)



TLKM 4140-4240 (TP 2018F: 4950).

Pola Morning Doji Star terbentuk atas TLKM mengindikasikan melambatnya aksi jual.  
BOW 4190

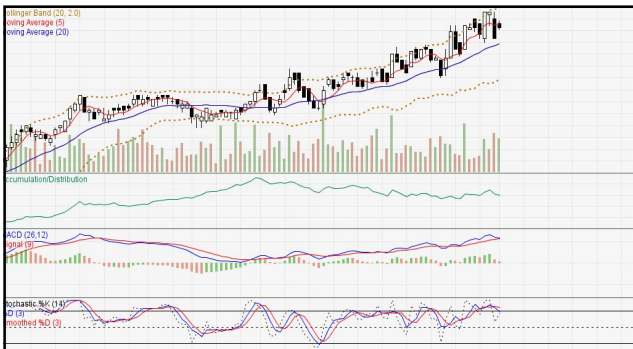
## Semen Indonesia (Persero) Tbk (SMGR)



SMGR 9050-9500 (TP 2017F:9200).

Pola Bearish Engulfing terbentuk atas SMGR mengindikasikan Bearish Reversal.  
BOW 9225

**Bank Negara Indonesia Tbk (BBNI)**



**BBNI 8425-8700 (TP 2017F:8000)**  
**Pola Homing Pigeon terbentuk atas BBNI**  
**mengindikasikan Bearish Reversal.**  
**BOW 8500**

**Pembangunan Perumahan (PTPP)**



**PTPP 2400-2550 (TP 2017F:4000)**  
**Pola Bullish Harami terbentuk atas PTPP**  
**mengindikasikan Bullish Reversal.**  
**BUY 2450**

**Astra Internasional Tbk (ASII)**



**ASII 8200-8400 (TP 2017F:8500).**  
**Pola Bearish Harami terbentuk atas ASII**  
**mengindikasikan Bearish Reversal.**  
**BOW 8275**

**Wijaya Karya Tbk (WIKA)**



**WIKA 1605-1715 (TP 2017F:3000)**  
**Pola Bullish Harami terbentuk atas WIKA**  
**mengindikasikan Bullish Reversal.**  
**BUY 1645**

**Adaro Energy Tbk (ADRO)**



**ADRO 1680-1750 (TP 2017F:2330)**  
**Pola Three Outside Down terbentuk atas ADRO**  
**mengindikasikan Bearish Continuation**  
**BOW 1700**

**Gudang Garam Tbk (GGRM)**



**GGRM 79675-80600 (TP 2017F:81150)**  
**Pola Four Price Doji terbentuk atas GGRM**  
**mengindikasikan melambatnya aksi beli.**  
**BOW 79925**

*Stocks Pick:*

**1. TPIA (TP 2017F:6300)**

*Recommendation:*

*#Sell at/below 5500. Target 5450. (Call Valid For Full Day).*

*#Sell at/below 5400. Target 5350. (Call Valid For Full Day).*

*\*Buy at/above 5350. Target 5450. (Call Valid Only If Low For Today is Below 5350).*

*\*Buy at/above 5400. Target 5450. (Call Valid Only If Low For Today is Below 5350).*

**2. CPIN (TP 2017F:3550)**

*Recommendation:*

*#Sell at/below 2990. Target 2950. (Call Valid For Full Day).*

*#Sell at/below 2905. Target 2865. (Call Valid For Full Day).*

*\*Buy at/above 2865. Target 2930. (Call Valid Only If Low For Today is Below 2865).*

*\*Buy at/above 2910. Target 2950. (Call Valid Only If Low For Today is Below 2865).*

**3. AKRA (TP 2017F:7200)**

*Recommendation:*

*#Sell at/below 6200. Target 6175. (Call Valid For Full Day).*

*#Sell at/below 6125. Target 6075. (Call Valid For Full Day).*

*\*Buy at/above 6075. Target 6150. (Call Valid Only If Low For Today is Below 6075).*

*\*Buy at/above 6125. Target 6175. (Call Valid Only If Low For Today is Below 6076).*

**4. PGAS (TP 2017F:1910)**

*Recommendation:*

*#Sell at/below 1610. Target 1590. (Call Valid For Full Day).*

*#Sell at/below 1570. Target 1550. (Call Valid For Full Day).*

*\*Buy at/above 1550. Target 1580. (Call Valid Only If Low For Today is Below 1550).*

*\*Buy at/above 1570. Target 1590. (Call Valid Only If Low For Today is Below 1550).*

**5. ITMG (TP 2018F:25325)**

*Recommendation:*

*#Sell at/below 21300. Target 21200. (Call Valid For Full Day).*

*#Sell at/below 21075. Target 20950. (Call Valid For Full Day).*

*\*Buy at/above 20950. Target 21150. (Call Valid Only If Low For Today is Below 20950).*

*\*Buy at/above 21100. Target 21200. (Call Valid Only If Low For Today is Below 20950).*

**6. TOTL (TP 2017F:975)**

*Recommendation:*

*#Sell at/below 670. Target 660. (Call Valid For Full Day).*

*#Sell at/below 650. Target 640. (Call Valid For Full Day).*

*\*Buy at/above 640. Target 655. (Call Valid Only If Low For Today is Below 640).*

*\*Buy at/above 650. Target 660. (Call Valid Only If Low For Today is Below 640).*

## MNC SEKURITAS RESEARCH TEAM

### Thendra Crisnanda

Head of Institutional Research, Strategy  
thendra.crisnanda@mncgroup.com  
(021) 2980 3111 ext. 52162

### Edwin J. Sebayang

Head of Retail Research, Technical, Auto, Mining  
edwin.sebayang@mncgroup.com  
(021) 2980 3111 ext. 52233

### I Made Adi Saputra

Head of Fixed Income Research  
imade.saputra@mncgroup.com  
(021) 2980 3111 ext. 52117

### Victoria Venny

Telco, Toll Road, Logistics, Consumer, Poultry  
victoria.nawang@mncgroup.com  
(021) 2980 3111 ext. 52236

### Gilang Anindito

Property, Construction, Mining, Media  
gilang.dhiroboto@mncgroup.com  
(021) 2980 3111 ext. 52235

### Rheza Dewangga Nugraha

Junior Analyst of Fixed Income  
rheza.nugraha@mncgroup.com  
(021) 2980 3111 ext. 52294

### Rr. Nurulita Harwaningrum

Banking, Auto, Plantation  
roro.harwaningrum@mncgroup.com  
(021) 2980 3111 ext. 52237

### Krestanti Nugrahane Widhi

Research Associate, Plantation, Consumer  
krestanti.widhi@mncgroup.com  
(021) 2980 3111 ext. 52166

### Sukisnawati Puspitasari

Research Associate, Cement, Mining  
sukisnawati.sari@mncgroup.com  
(021) 2980 3111 ext. 52307

### MNC Research Investment Ratings Guidance

**BUY** : Share price may exceed 10% over the next 12 months

**HOLD** : Share price may fall within the range of +/- 10% of the next 12 months

**SELL** : Share price may fall by more than 10% over the next 12 months

**Not Rated** : Stock is not within regular research coverage

## PT MNC Sekuritas

MNC Financial Center Lt. 14 – 16

Jl. Kebon Sirih No. 21 - 27, Jakarta Pusat 10340

Telp : (021) 2980 3111

Fax : (021) 3983 6899

Call Center : 1500 899

### Disclaimer

*This research report has been issued by PT MNC Sekuritas. It may not be reproduced or further distributed or published, in whole or in part, for any purpose. PT MNC Sekuritas has based this document on information obtained from sources it believes to be reliable but which it has not independently verified; PT MNC Sekuritas makes no guarantee, representation or warranty and accepts no responsibility to liability as to its accuracy or completeness. Expression of opinion herein are those of the research department only and are subject to change without notice. This document is not and should not be construed as an offer or the solicitation of an offer to purchase or subscribe or sell any investment. PT MNC Sekuritas and its affiliates and/or their offices, directors and employees may own or have positions in any investment mentioned herein or any investment related thereto and may from time to time add to or dispose of any such investment. PT MNC Sekuritas and its affiliates may act as market maker or have assumed an underwriting position in the securities of companies discussed herein (or investment related thereto) and may sell them to or buy them from customers on a principal basis and may also perform or seek to perform investment banking or underwriting services for or relating to those companies.*