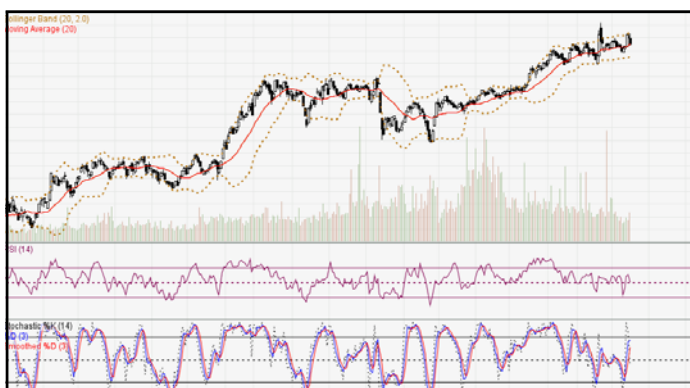




IDX-Composite



IDX Composite 5,708 - 5,778

Pola Bullish Harami terbentuk atas IDX mengindikasikan
berlanjutnya penguatan dihari Selasa.

United Tractor (UNTR)



UNTR 25750-26850 (TP 2017F:28500)

Pola *Two Black Crows* terbentuk atas UNTR mengindikasikan
Bearish Continuation.

BOW 26400

Telekomunikasi Indonesia (Persero) Tbk (TLKM)



TLKM 4360-4445 (TP 2017F: 5100).

Pola *Four Price Doji* terbentuk atas TLKM mengindikasikan
keraguan arah tukan.

BUY 4400

Semen Indonesia (Persero) Tbk (SMGR)



SMGR 9950-10350 (TP 2017F:10500)

Pola *Bullish Separating Line* terbentuk atas SMGR
mengindikasikan *Bullish Reversal*.

BUY 10150

Bank Negara Indonesia Tbk (BBNI)



BBNI 6450-6650 (TP 2017F:6500)

Pola *Bullish Engulfing* terbentuk atas BBNI mengindikasikan *Bullish Reversal*.

BUY 6550

Pembangunan Perumahan (PTPP)



PTPP 3100-3200 (TP 2017F:5200)

Pola *Spinning Tops* terbentuk atas PTPP mengindikasikan munculnya aksi beli.

BUY 3150

Astra Internasional Tbk (ASII)



ASII 8625-8825 (TP 2017F:9550).

Pola *Gravestone Doji* terbentuk atas ASII mengindikasikan munculnya aksi beli.

BUY 8725

Wijaya Karya Tbk (WIKA)



WIKA 2160-2250 (TP 2017F:3670)

Pola *Two Black Crows* terbentuk atas WIKA mengindikasikan *Bearish Continuation*.

BOW 2190

Harum Energy Tbk (HRUM)



HRUM 2000-2060 (TP 2017F:2750)

Pola *Three Outside Down* terbentuk atas HRUM mengindikasikan *Bearish Continuation*.

BOW 2020

Gudang Garam Tbk (GGRM)



GGRM 79250-80700 (TP 2016F:77850)

Pola *White Opening Marubozu* di area OVERBOUGHT terbentuk atas GGRM mengindikasikan *Bullish Reversal* dan rawan *profit taking*.

BUY 79900

Stocks Pick:

1. PTBA (TP 2017F:19675)

Recommendation:

**Buy at/above 11400. Target 11500. Stoploss 11375 (Call Valid For First 3 hours)*

**Buy at/above 11600. Target 11675. Stoploss 11550 (Call Valid For Full Day)*

Sell at/below 11675. Target 11525. Stoploss 11725 (Call Valid Only If High For Today is Above 11675)

#Sell at/below 11575. Target 11500. Stoploss 11625 (Call Valid Only If High For Today is Above 11675)

2. CPIN (TP 2017F:4300)

Recommendation:

#Sell at/below 3150. Target 3130 (Call Valid for First 3 hours)

#Sell at/below 3100. Target 3080 (Call Valid for full day)

**Buy at/above 3080. Target 3120 (Call Valid only if low for today is below 3080)*

**Buy at/above 3110. Target 3130. (Call Valid only if low for today is below 3080)*

3. AKRA (TP 2017F:7200)

Recommendation:

#Sell at/below 6350. Target 6300 (Call Valid for First 3 hours)

#Sell at/below 6250. Target 6200 (Call Valid for full day)

**Buy at/above 6200. Target 6275 (Call Valid only if low for today is below 6200)*

**Buy at/above 6250. Target 6300. (Call Valid only if low for today is below 6200)*

4. ITMG (TP 2017F:21250)

Recommendation:

#Sell at/below 17200. Target 17150 (Call Valid for First 3 hours)

#Sell at/below 17100. Target 17025 (Call Valid for full day)

**Buy at/above 17025. Target 17125 (Call Valid only if low for today is below 17025)*

**Buy at/above 17100. Target 17150. (Call Valid only if low for today is below 17025)*

5. PGAS (TP 2017F:3125)

Recommendation:

**Buy at/above 2390. Target 2400. Stoploss 2380 (Call Valid For First 3 hours)*

**Buy at/above 2415. Target 2430. Stoploss 2410 (Call Valid For Full Day)*

Sell at/below 2430. Target 2410. Stoploss 2440 (Call Valid Only If High For Today is Above 2430)

#Sell at/below 2410. Target 2400. Stoploss 2420 (Call Valid Only If High For Today is Above 2430)

6. JPFA (TP 2017F:1800)

Recommendation:

**Buy at/above 1350. Target 1380. Stoploss 1330 (Call Valid For First 3 hours)*

**Buy at/above 1420. Target 1450. Stoploss 1400 (Call Valid For Full Day)*

Sell at/below 1450. Target 1400. Stoploss 1480 (Call Valid Only If High For Today is Above 1450)

#Sell at/below 1410. Target 1380. Stoploss 1430 (Call Valid Only If High For Today is Above 1450)

MNC SEKURITAS RESEARCH TEAM

Edwin J. Sebayang
Head of Retail Research
Technical, Auto, Mining
edwin.sebayang@mncgroup.com
(021) 2980 3111 ext. 52233

I Made Adi Saputra
Head of Fixed Income Research
imade.saputra@mncgroup.com
(021) 2980 3111 ext. 52117

Thendra Crisnanda
Head of Institution Research
thendra.crisnanda@mncgroup.com
(021) 2980 3111 ext. 52162

Victoria Venny
Telco, Infrastructure, Logistics
victoria.nawang@mncgroup.com
(021) 2980 3111 ext. 52236

Rheza Dewangga Nugraha
Junior Analyst of Fixed Income
rheza.nugraha@mncgroup.com
(021) 2980 3111 ext. 52294

Gilang Anindito
Property, Construction
gilang.dhiroboto@mncgroup.com
(021) 2980 3111 ext. 52235

Rr. Nurulita Harwaningrum
Banking
roro.harwaningrum@mncgroup.com
(021) 2980 3111 ext. 52237

Yosua Zisokhi
Plantation, Cement, Poultry, Cigarette
yosua.zisokhi@mncgroup.com
(021) 2980 3111 ext. 52234

Krestanti Nugrahane Widhi
Research Associate
krestanti.widhi@mncgroup.com
(021) 2980 3111 ext. 52166

Sukisnawati Puspitasari
Research Associate
sukisnawati.sari@mncgroup.com
(021) 2980 3111 ext. 52307

MNC Research Investment Ratings Guidance

BUY : Share price may exceed 10% over the next 12 months

HOLD : Share price may fall within the range of +/- 10% of the next 12 months

SELL : Share price may fall by more than 10% over the next 12 months

Not Rated : Stock is not within regular research coverage

PT MNC Sekuritas

MNC Financial Center Lt. 14 – 16
Jl. Kebon Sirih No. 21 - 27, Jakarta Pusat 10340
Telp : (021) 2980 3111
Fax : (021) 3983 6899
Call Center : 1500 899

Disclaimer

This research report has been issued by PT MNC Sekuritas. It may not be reproduced or further distributed or published, in whole or in part, for any purpose. PT MNC Sekuritas has based this document on information obtained from sources it believes to be reliable but which it has not independently verified; PT MNC Sekuritas makes no guarantee, representation or warranty and accepts no responsibility to liability as to its accuracy or completeness. Expression of opinion herein are those of the research department only and are subject to change without notice. This document is not and should not be construed as an offer or the solicitation of an offer to purchase or subscribe or sell any investment. PT MNC Sekuritas and its affiliates and/or their offices, directors and employees may own or have positions in any investment mentioned herein or any investment related thereto and may from time to time add to or dispose of any such investment. PT MNC Sekuritas and its affiliates may act as market maker or have assumed an underwriting position in the securities of companies discussed herein (or investment related thereto) and may sell them to or buy them from customers on a principal basis and may also perform or seek to perform investment banking or underwriting services for or relating to those companies.