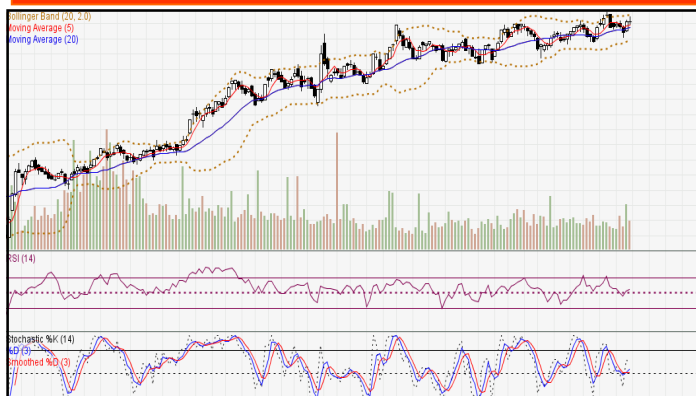


IDX-Composite



IDX Composite 5,927 - 5,979

Pola *White Opening Marubozu* terbentuk atas IDX mengindikasikan *Bullish Reversal* dihari Selasa

United Tractor (UNTR)



UNTR 33900-35200 (TP 2017F:30000)

Pola *Bullish Harami* terbentuk atas UNTR mengindikasikan *Bullish Reversal*
BUY 34450

Telekomunikasi Indonesia (Persero) Tbk (TLKM)



TLKM 4390-4490 (TP 2017F: 5000)

Pola *Bullish Engulfing* terbentuk atas TLKM mengindikasikan *Bullish Reversal*
BUY 4450

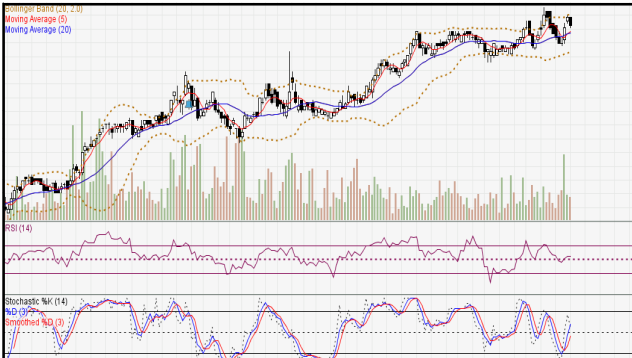
Semen Indonesia (Persero) Tbk (SMGR)



SMGR 10800-11100 (TP 2017F:9200)

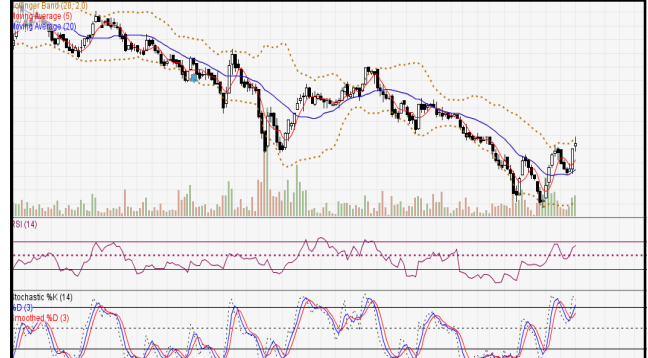
Pola *Dragonfly Doji* terbentuk atas SMGR mengindikasikan melambatnya aksi beli
BUY 10900

Bank Negara Indonesia Tbk (BBNI)



BBNI 7425-7600 (TP 2017F:8000)
 Pola *Bearish Engulfing* terbentuk atas BBNI
 mengindikasikan *Bearish Reversal*
BOW 7500

Pembangunan Perumahan (PTPP)



PTPP 2700-2870 (TP 2017F:4000)
 Pola *Three White Soldiers* terbentuk atas PTPP
 mengindikasikan *Bullish Continuation*
BUY 2760

Astra Internasional Tbk (ASII)



ASII 8150-8625 (TP 2017F:8500)
 Pola *Bearish Harami* diarea sangat overbought
 terbentuk atas ASII mengindikasikan *Bearish Reversal*
BOW 8325

Wijaya Karya Tbk (WIKA)



WIKA 1740-1850 (TP 2017F:3000)
 Pola *Three Outside Up* terbentuk atas WIKA
 mengindikasikan *Bullish Continuation*
BUY 1800

Adaro Energy Tbk (ADRO)



ADRO 1820-1905 (TP 2017F:2330)
 Pola *Bearish Engulfing* terbentuk atas ADRO
 mengindikasikan *Bearish Reversal*
BOW 1860

Gudang Garam Tbk (GGRM)



GGRM 63850-65950 (TP 2017F:81150)
 Pola *Bullish Harami Cross* terbentuk atas GGRM
 mengindikasikan *Bullish Reversal*
BUY 64475

*Stocks Pick:**1. PTBA (TP 2017F:15100)**Recommendation:*

**Buy at/above 10800. Target 11125. Stoploss 10650 (Call Valid For First 3 hours)*

**Buy at/above 11450. Target 11775. Stoploss 11300 (Call Valid For Full Day)*

Sell at/below 11775. Target 11275. Stoploss 12025 (Call Valid Only If High For Today is Above 11775)

#Sell at/below 11425. Target 11125. Stoploss 11575 (Call Valid Only If High For Today is Above 11775)

*2. CPIN (TP 2017F:3550)**Recommendation:*

#Sell at/below 3160. Target 3110 (Call Valid for First 3 hours)

#Sell at/below 3050. Target 3000 (Call Valid for full day)

**Buy at/above 3000. Target 3085 (Call Valid only if low for today is below 3000)*

**Buy at/above 3060. Target 3110. (Call Valid only if low for today is below 3000)*

*3. AKRA (TP 2017F:7200)**Recommendation:*

**Buy at/above 7100. Target 7250. Stoploss 7025 (Call Valid For First 3 hours)*

**Buy at/above 7400. Target 7550. Stoploss 7325 (Call Valid For Full Day)*

Sell at/below 7550. Target 7300. Stoploss 7650 (Call Valid Only If High For Today is Above 7550)

#Sell at/below 7400. Target 7250. Stoploss 7450 (Call Valid Only If High For Today is Above 7550)

*4. ITMG (TP 2017F:21250)**Recommendation:*

#Sell at/below 21200. Target 21050 (Call Valid for First 3 hours)

#Sell at/below 20875. Target 20725 (Call Valid for full day)

**Buy at/above 20725. Target 20975 (Call Valid only if low for today is below 20725)*

**Buy at/above 20900. Target 21050. (Call Valid only if low for today is below 20725)*

*5. PGAS (TP 2017F:1910)**Recommendation:*

**Buy at/above 1640. Target 1660. Stoploss 1630 (Call Valid For First 3 hours)*

**Buy at/above 1680. Target 1700. Stoploss 1670 (Call Valid For Full Day)*

Sell at/below 1700. Target 1670. Stoploss 1720 (Call Valid Only If High For Today is Above 1700)

#Sell at/below 1680. Target 1660. Stoploss 1690 (Call Valid Only If High For Today is Above 1700)

*6. TOTL (TP 2017F:975)**Recommendation:*

**Buy at/above 690. Target 710. Stoploss 680 (Call Valid For First 3 hours)*

**Buy at/above 735. Target 755. Stoploss 720 (Call Valid For Full Day)*

Sell at/below 755. Target 720. Stoploss 770 (Call Valid Only If High For Today is Above 755)

#Sell at/below 730. Target 710. Stoploss 740 (Call Valid Only If High For Today is Above 755)

MNC SEKURITAS RESEARCH TEAM

Thendra Crisnanda

Head of Institutional Research, Strategy
thendra.crisnanda@mncgroup.com
(021) 2980 3111 ext. 52162

Edwin J. Sebayang

Head of Retail Research, Technical, Auto, Mining
edwin.sebayang@mncgroup.com
(021) 2980 3111 ext. 52233

I Made Adi Saputra

Head of Fixed Income Research
imade.saputra@mncgroup.com
(021) 2980 3111 ext. 52117

Victoria Venny

Telco, Toll Road, Logistics, Consumer, Poultry
victoria.nawang@mncgroup.com
(021) 2980 3111 ext. 52236

Gilang Anindito

Property, Construction, Mining, Media
gilang.dhiroboto@mncgroup.com
(021) 2980 3111 ext. 52235

Rheza Dewangga Nugraha

Junior Analyst of Fixed Income
rheza.nugraha@mncgroup.com
(021) 2980 3111 ext. 52294

Rr. Nurulita Harwaningrum

Banking, Auto, Plantation
roro.harwaningrum@mncgroup.com
(021) 2980 3111 ext. 52237

Krestanti Nugrahane Widhi

Research Associate, Plantation, Consumer
krestanti.widhi@mncgroup.com
(021) 2980 3111 ext. 52166

Sukisnawati Puspitasari

Research Associate, Cement, Mining
sukisnawati.sari@mncgroup.com
(021) 2980 3111 ext. 52307

MNC Research Investment Ratings Guidance

BUY : Share price may exceed 10% over the next 12 months

HOLD : Share price may fall within the range of +/- 10% of the next 12 months

SELL : Share price may fall by more than 10% over the next 12 months

Not Rated : Stock is not within regular research coverage

PT MNC Sekuritas

MNC Financial Center Lt. 14 – 16

Jl. Kebon Sirih No. 21 - 27, Jakarta Pusat 10340

Telp : (021) 2980 3111

Fax : (021) 3983 6899

Call Center : 1500 899

Disclaimer

This research report has been issued by PT MNC Sekuritas. It may not be reproduced or further distributed or published, in whole or in part, for any purpose. PT MNC Sekuritas has based this document on information obtained from sources it believes to be reliable but which it has not independently verified; PT MNC Sekuritas makes no guarantee, representation or warranty and accepts no responsibility to liability as to its accuracy or completeness. Expression of opinion herein are those of the research department only and are subject to change without notice. This document is not and should not be construed as an offer or the solicitation of an offer to purchase or subscribe or sell any investment. PT MNC Sekuritas and its affiliates and/or their offices, directors and employees may own or have positions in any investment mentioned herein or any investment related thereto and may from time to time add to or dispose of any such investment. PT MNC Sekuritas and its affiliates may act as market maker or have assumed an underwriting position in the securities of companies discussed herein (or investment related thereto) and may sell them to or buy them from customers on a principal basis and may also perform or seek to perform investment banking or underwriting services for or relating to those companies.