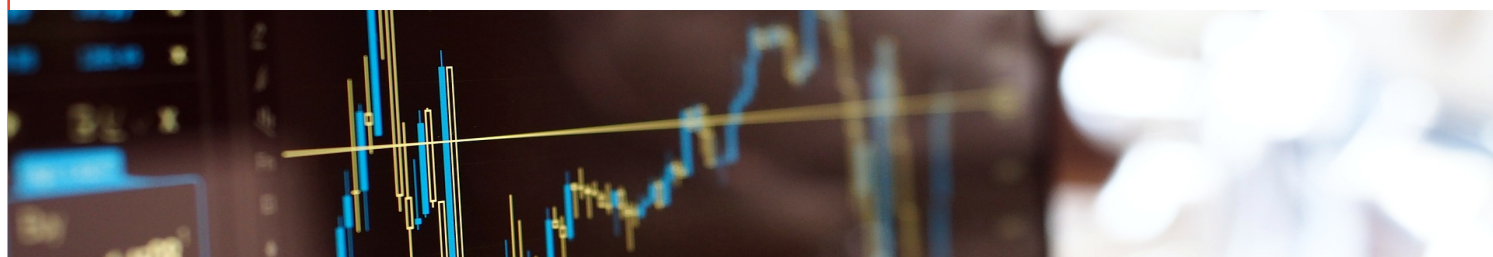


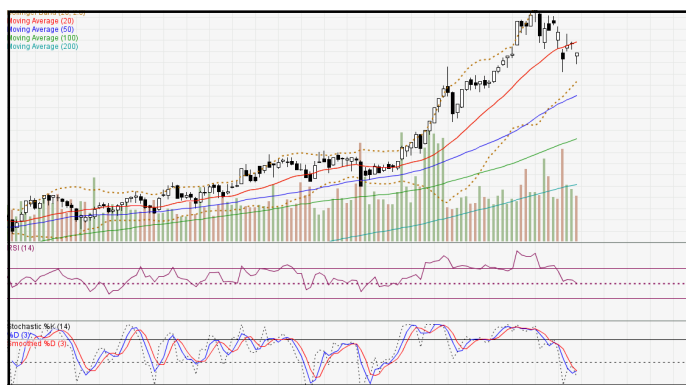
DAILY TECHNICAL

MNC Sekuritas Research Division

13 Februari 2018



IDX-Composite



IDX Composite 6,488 - 6,562

Pola *White Candle* terbentuk atas IDX mengindikasikan
berlanjutnya **PENGUATAN** dihari Selasa.

United Tractor (UNTR)



UNTR 36800-38400 (TP 2018F:41000)

Pola *Bearish Kicking* terbentuk atas UNTR
mengindikasikan *Bearish Reversal*
BOW 37600

Barito Pasific Tbk (BRPT)



BRPT 2320-2410 (TP 2018F:3000)

Pola *Hammer* terbentuk atas BRPT mengindikasikan
Bullish Reversal
BUY 2350

Bank Central Asia Tbk (BBCA)

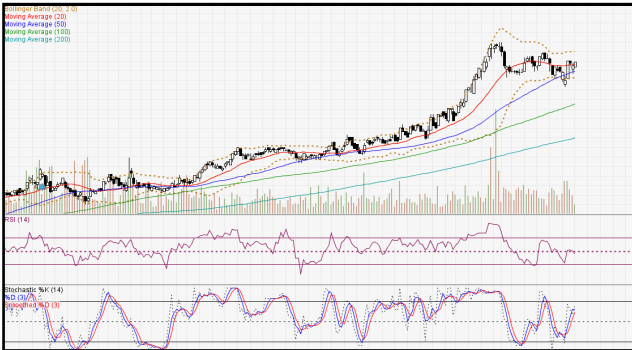


BBCA 23300-23700 (TP 2018F:23000)

Pola *Dark Cloud* terbentuk atas BBCA
mengindikasikan *Bearish Reversal*
BOW 23475

Research MNC Sekuritas
research@mncsecurities.com
(021) 2980 3111 (Hunting)

Bank Negara Indonesia Tbk (BBNI)



BBNI 9425-9600 (TP 2018F:10900) Pola Three Outside Up terbentuk atas BBNI mengindikasikan Bullish Continuation. BUY 9525

Adhi Karya Tbk (ADHI)



ADHI 2380-2470 (TP 2018F:2800) Pola Two White Soldiers terbentuk atas ADHI mengindikasikan Bullish Continuation. BUY 2420

Astra Internasional Tbk (ASII)



ASII 8125-8325 (TP 2018F:9350). Pola Matching Low terbentuk atas ASII mengindikasikan Bullish Reversal. BUY 8200

Harum Energy Tbk (HRUM)



HRUM 3050-3200 (TP 2018F:3400) Pola Bullish Engulfing terbentuk atas HRUM mengindikasikan Bullish Reversal. BUY 3140

Adaro Energy Tbk (ADRO)



ADRO 2310-2400 (TP 2018F:2800) Pola Short White Candle terbentuk atas ADRO mengindikasikan Bullish Reversal. BUY 2350.

Gudang Garam Tbk (GGRM)



GGRM 78200-81400 (TP 2018F:89000) Pola Three Black Crows terbentuk atas GGRM mengindikasikan Bearish Continuation. BOW 79500.

*Stocks Pick:**1. BBRI (TP 2017F:4100)**Recommendation:**#Sell at/below 3770. Target 3700. (Call Valid For Full Day).**#Sell at/below 3625. Target 3560. (Call Valid For Full Day).***Buy at/above 3560. Target 3670. (Call Valid Only If Low For Today is Below 3560).***Buy at/above 3630. Target 3700. (Call Valid Only If Low For Today is Below 3560).**2. PTBA (TP 2018F:3800)**Recommendation:***Buy at/above 3090. Target 3100. Stoploss 3080 (Call Valid For First 3 hours)***Buy at/above 3115. Target 3130. Stoploss 3110 (Call Valid For Full Day)**#Sell at/below 3130. Target 3110. Stoploss 3140 (Call Valid Only If High For Today is Above 3130)**#Sell at/below 3110. Target 3100. Stoploss 3120 (Call Valid Only If High For Today is Above 3130)**3. AKRA (TP 2018F:7200)**Recommendation:**#Sell at/below 5825. Target 5775. (Call Valid For Full Day).**#Sell at/below 5700. Target 5625. (Call Valid For Full Day).***Buy at/above 5625. Target 5725. (Call Valid Only If Low For Today is Below 5625).***Buy at/above 5700. Target 5775. (Call Valid Only If Low For Today is Below 5625).**4. PGAS (TP 2018F:3000)**Recommendation:***Buy at/above 2360. Target 2370. Stoploss 2350 (Call Valid For First 3 hours)***Buy at/above 2390. Target 2400. Stoploss 2380 (Call Valid For Full Day)**#Sell at/below 2400. Target 2380. Stoploss 2415 (Call Valid Only If High For Today is Above 2400)**#Sell at/below 2390. Target 2370. Stoploss 23909 (Call Valid Only If High For Today is Above 2400)**5. ITMG (TP 2018F:30000)**Recommendation:**#Sell at/below 28325. Target 28175. (Call Valid For Full Day).**#Sell at/below 28000. Target 27850. (Call Valid For Full Day).***Buy at/above 27850. Target 28100. (Call Valid Only If Low For Today is Below 27850).***Buy at/above 28025. Target 28175. (Call Valid Only If Low For Today is Below 27850).**6. BBTN (TP 2018F:4300)**Recommendation:**#Sell at/below 3680. Target 3620. (Call Valid For Full Day).**#Sell at/below 3550. Target 3485. (Call Valid For Full Day).***Buy at/above 3485. Target 3590. (Call Valid Only If Low For Today is Below 3485).***Buy at/above 3560. Target 3620. (Call Valid Only If Low For Today is Below 3485).**7. ANTM (TP 2018F:1000)**Recommendation:**#Sell at/below 850. Target 840. (Call Valid For Full Day).**#Sell at/below 830. Target 820. (Call Valid For Full Day).***Buy at/above 820. Target 835. (Call Valid Only If Low For Today is Below 820).***Buy at/above 830. Target 840. (Call Valid Only If Low For Today is Below 820).*

MNC SEKURITAS RESEARCH TEAM

Thendra Crisnanda

Head of Institutional Research, Strategy
thendra.crisnanda@mncgroup.com
(021) 2980 3111 ext. 52162

Edwin J. Sebayang

Head of Retail Research, Technical, Auto, Mining
edwin.sebayang@mncgroup.com
(021) 2980 3111 ext. 52233

I Made Adi Saputra

Head of Fixed Income Research
imade.saputra@mncgroup.com
(021) 2980 3111 ext. 52117

Victoria Venny

Telco, Toll Road, Logistics, Consumer, Poultry
victoria.nawang@mncgroup.com
(021) 2980 3111 ext. 52236

Gilang Anindito

Property, Construction, Mining, Media
gilang.dhiroboto@mncgroup.com
(021) 2980 3111 ext. 52235

Rheza Dewangga Nugraha

Junior Analyst of Fixed Income
rheza.nugraha@mncgroup.com
(021) 2980 3111 ext. 52294

Rr. Nurulita Harwaningrum

Banking, Auto, Plantation
roro.harwaningrum@mncgroup.com
(021) 2980 3111 ext. 52237

Krestanti Nugrahane Widhi

Research Associate, Plantation, Consumer
krestanti.widhi@mncgroup.com
(021) 2980 3111 ext. 52166

Sukisnawati Puspitasari

Research Associate, Cement, Mining
sukisnawati.sari@mncgroup.com
(021) 2980 3111 ext. 52307

MNC Research Investment Ratings Guidance

BUY : Share price may exceed 10% over the next 12 months

HOLD : Share price may fall within the range of +/- 10% of the next 12 months

SELL : Share price may fall by more than 10% over the next 12 months

Not Rated : Stock is not within regular research coverage

PT MNC Sekuritas

MNC Financial Center Lt. 14 – 16

Jl. Kebon Sirih No. 21 - 27, Jakarta Pusat 10340

Telp : (021) 2980 3111

Fax : (021) 3983 6899

Call Center : 1500 899

Disclaimer

This research report has been issued by PT MNC Sekuritas. It may not be reproduced or further distributed or published, in whole or in part, for any purpose. PT MNC Sekuritas has based this document on information obtained from sources it believes to be reliable but which it has not independently verified; PT MNC Sekuritas makes no guarantee, representation or warranty and accepts no responsibility to liability as to its accuracy or completeness. Expression of opinion herein are those of the research department only and are subject to change without notice. This document is not and should not be construed as an offer or the solicitation of an offer to purchase or subscribe or sell any investment. PT MNC Sekuritas and its affiliates and/or their offices, directors and employees may own or have positions in any investment mentioned herein or any investment related thereto and may from time to time add to or dispose of any such investment. PT MNC Sekuritas and its affiliates may act as market maker or have assumed an underwriting position in the securities of companies discussed herein (or investment related thereto) and may sell them to or buy them from customers on a principal basis and may also perform or seek to perform investment banking or underwriting services for or relating to those companies.