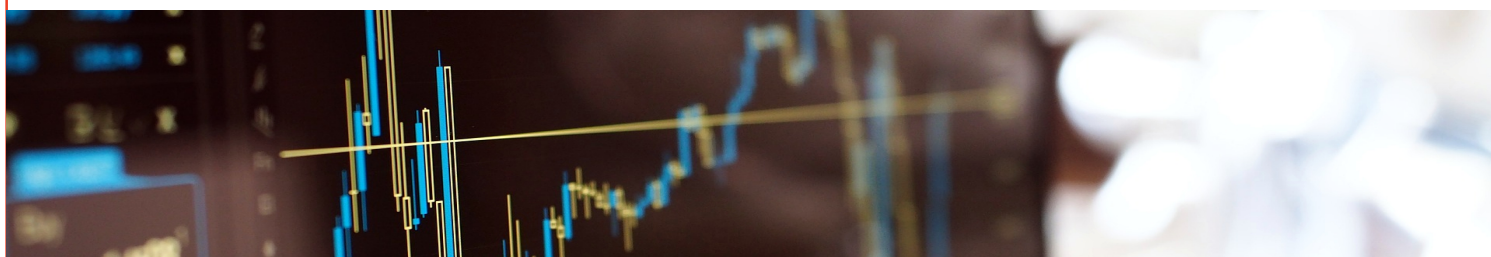


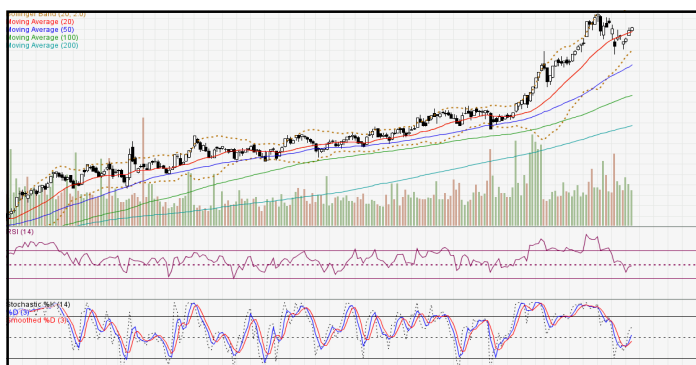
# DAILY TECHNICAL

MNC Sekuritas Research Division

15 Februari 2018

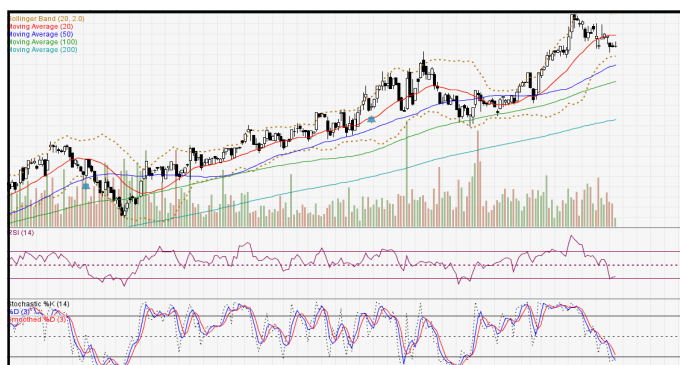


## IDX-Composite



IDX Composite 6,561 - 6,636  
Pola Three White Soldiers terbentuk atas IDX  
mengindikasikan berlanjutnya PENGUATAN dihari Kamis.

## United Tractor (UNTR)



UNTR 37350-38250 (TP 2018F:41000) Pola Dragonfly  
Doji terbentuk atas UNTR mengindikasikan  
melambatnya aksi beli. BUY 37725

## Barito Pasific Tbk (BRPT)



BRPT 2420-2550 (TP 2018F:3000). Pola White Closing  
Marubozu terbentuk atas BRPT mengindikasikan  
Bullish Reversal. BUY 2480

## Bank Central Asia Tbk (BBCA)



BBCA 23375-24025 (TP 2018F:23000) Pola Four Price  
Doji terbentuk atas BBCA mengindikasikan  
melambatnya aksi beli. BUY 23700

Research MNC Sekuritas  
[research@mncsecurities.com](mailto:research@mncsecurities.com)  
(021) 2980 3111 (Hunting)

**Bank Negara Indonesia Tbk (BBNI)**



**BBNI 9650-9775 (TP 2018F:10900) Pola Homing Pigeon terbentuk atas BBNI mengindikasikan melambatnya aksi beli . BUY 9700**

**Adhi Karya Tbk (ADHI)**



**ADHI 2330-2410 (TP 2018F:2800) Pola Spinning Tops terbentuk atas ADHI mengindikasikan melambatnya aksi beli. BOW 2360.**

**Astra Internasional Tbk (ASII)**



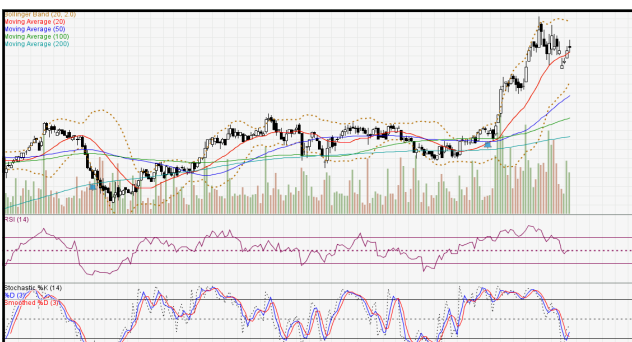
**ASII 8250-8450 (TP 2018F:9350). Pola Three Inside Up terbentuk atas ASII mengindikasikan Bullish Continuation. BUY 8375**

**Harum Energy Tbk (HRUM)**



**HRUM 3170-3330 (TP 2018F:3400) Pola Three White Soldiers terbentuk atas HRUM mengindikasikan Bullish Continuation. BUY 3260**

**Adaro Energy Tbk (ADRO)**



**ADRO 2400-2490 (TP 2018F:2800) Pola Evening Doji Star terbentuk atas ADRO mengindikasikan melambatnya aksi beli . BUY 2440.**

**Gudang Garam Tbk (GGRM)**



**GGRM 79300-81150 (TP 2018F:89000) Pola Matching Low terbentuk atas GGRM mengindikasikan Bullish Reversal. BUY 80000.**

## 1. BBRI (TP 2017F:4100)

## Recommendation:

\*Buy at/above 3870. Target 3900. Stoploss 3850 (Call Valid For First 3 hours)

\*Buy at/above 3940. Target 3970. Stoploss 3920 (Call Valid For Full Day)

#Sell at/below 3970. Target 3920. Stoploss 4000 (Call Valid Only If High For Today is Above 3970)

#Sell at/below 3930. Target 3900. Stoploss 3950 (Call Valid Only If High For Today is Above 3970)

## 2. PTBA (TP 2018F:3800)

## Recommendation:

\*Buy at/above 3260. Target 3320. Stoploss 3235 (Call Valid For First 3 hours)

\*Buy at/above 3385. Target 3440. Stoploss 3355 (Call Valid For Full Day)

#Sell at/below 3440. Target 3350. Stoploss 3485 (Call Valid Only If High For Today is Above 3440)

#Sell at/below 3380. Target 3320. Stoploss 3405 (Call Valid Only If High For Today is Above 3440)

## 3. AKRA (TP 2018F:7200)

## Recommendation:

\*Buy at/above 5925. Target 5950. Stoploss 5900 (Call Valid For First 3 hours)

\*Buy at/above 6000. Target 6025. Stoploss 5975 (Call Valid For Full Day)

#Sell at/below 6025. Target 5975. Stoploss 6050 (Call Valid Only If High For Today is Above 6050)

#Sell at/below 6000. Target 5950. Stoploss 6000 (Call Valid Only If High For Today is Above 6050)

## 4. PGAS (TP 2018F:3000)

## Recommendation:

#Sell at/below 2460. Target 2370. (Call Valid For Full Day).

#Sell at/below 2265. Target 2170. (Call Valid For Full Day).

\*Buy at/above 2170. Target 2320. (Call Valid Only If Low For Today is Below 2170).

\*Buy at/above 2280. Target 2370. (Call Valid Only If Low For Today is Below 2170).

## 5. ITMG (TP 2018F:30000)

## Recommendation:

#Sell at/below 28900. Target 28600. (Call Valid For Full Day).

#Sell at/below 28250. Target 27950. (Call Valid For Full Day).

\*Buy at/above 27950. Target 28450. (Call Valid Only If Low For Today is Below 27950).

\*Buy at/above 28275. Target 28600. (Call Valid Only If Low For Today is Below 27900).

## 6. BBTN (TP 2018F:4300)

## Recommendation:

#Sell at/below 3800. Target 3760. (Call Valid For Full Day).

#Sell at/below 3715. Target 3675. (Call Valid For Full Day).

\*Buy at/above 3675. Target 3740. (Call Valid Only If Low For Today is Below 3675).

\*Buy at/above 3720. Target 3760. (Call Valid Only If Low For Today is Below 3675).

## 7. ANTM (TP 2018F:1000)

## Recommendation:

#Sell at/below 890. Target 880. (Call Valid For Full Day).

#Sell at/below 875. Target 870. (Call Valid For Full Day).

\*Buy at/above 870. Target 880. (Call Valid Only If Low For Today is Below 870).

## MNC SEKURITAS RESEARCH TEAM

### Thendra Crisnanda

Head of Institutional Research, Strategy  
thendra.crisnanda@mncgroup.com  
(021) 2980 3111 ext. 52162

### Edwin J. Sebayang

Head of Retail Research, Technical, Auto, Mining  
edwin.sebayang@mncgroup.com  
(021) 2980 3111 ext. 52233

### I Made Adi Saputra

Head of Fixed Income Research  
imade.saputra@mncgroup.com  
(021) 2980 3111 ext. 52117

### Victoria Venny

Telco, Toll Road, Logistics, Consumer, Poultry  
victoria.nawang@mncgroup.com  
(021) 2980 3111 ext. 52236

### Gilang Anindito

Property, Construction, Mining, Media  
gilang.dhiroboto@mncgroup.com  
(021) 2980 3111 ext. 52235

### Rheza Dewangga Nugraha

Junior Analyst of Fixed Income  
rheza.nugraha@mncgroup.com  
(021) 2980 3111 ext. 52294

### Rr. Nurulita Harwaningrum

Banking, Auto, Plantation  
roro.harwaningrum@mncgroup.com  
(021) 2980 3111 ext. 52237

### Krestanti Nugrahane Widhi

Research Associate, Plantation, Consumer  
krestanti.widhi@mncgroup.com  
(021) 2980 3111 ext. 52166

### Sukisnawati Puspitasari

Research Associate, Cement, Mining  
sukisnawati.sari@mncgroup.com  
(021) 2980 3111 ext. 52307

### MNC Research Investment Ratings Guidance

**BUY** : Share price may exceed 10% over the next 12 months

**HOLD** : Share price may fall within the range of +/- 10% of the next 12 months

**SELL** : Share price may fall by more than 10% over the next 12 months

**Not Rated** : Stock is not within regular research coverage

## PT MNC Sekuritas

MNC Financial Center Lt. 14 – 16

Jl. Kebon Sirih No. 21 - 27, Jakarta Pusat 10340

Telp : (021) 2980 3111

Fax : (021) 3983 6899

Call Center : 1500 899

### Disclaimer

*This research report has been issued by PT MNC Sekuritas. It may not be reproduced or further distributed or published, in whole or in part, for any purpose. PT MNC Sekuritas has based this document on information obtained from sources it believes to be reliable but which it has not independently verified; PT MNC Sekuritas makes no guarantee, representation or warranty and accepts no responsibility to liability as to its accuracy or completeness. Expression of opinion herein are those of the research department only and are subject to change without notice. This document is not and should not be construed as an offer or the solicitation of an offer to purchase or subscribe or sell any investment. PT MNC Sekuritas and its affiliates and/or their offices, directors and employees may own or have positions in any investment mentioned herein or any investment related thereto and may from time to time add to or dispose of any such investment. PT MNC Sekuritas and its affiliates may act as market maker or have assumed an underwriting position in the securities of companies discussed herein (or investment related thereto) and may sell them to or buy them from customers on a principal basis and may also perform or seek to perform investment banking or underwriting services for or relating to those companies.*