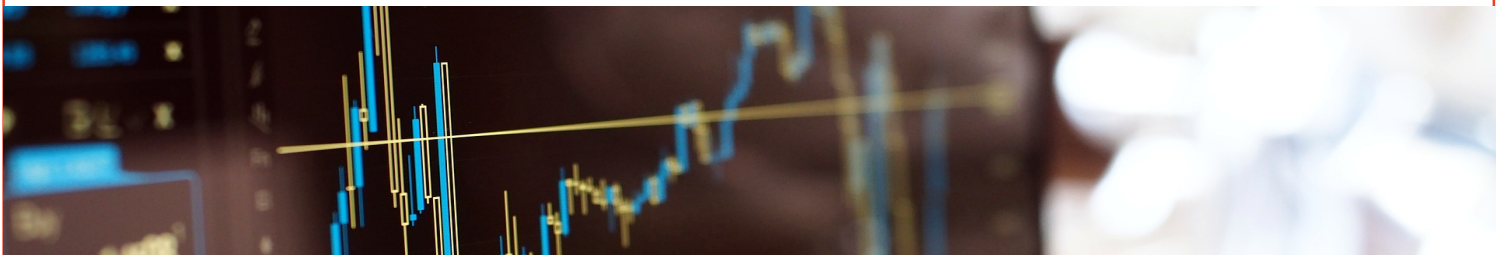
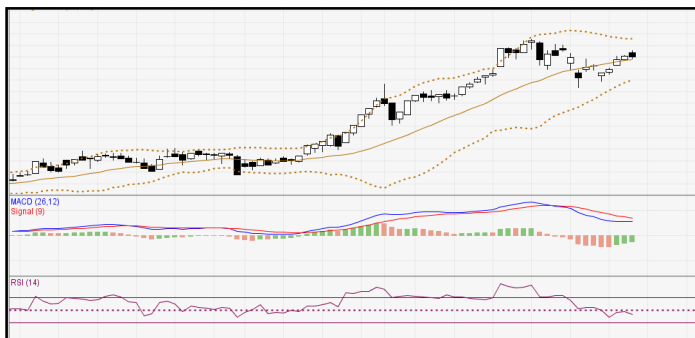


DAILY TECHNICAL

MNC Sekuritas Research Division
19 Februari 2018



IDX-Composite



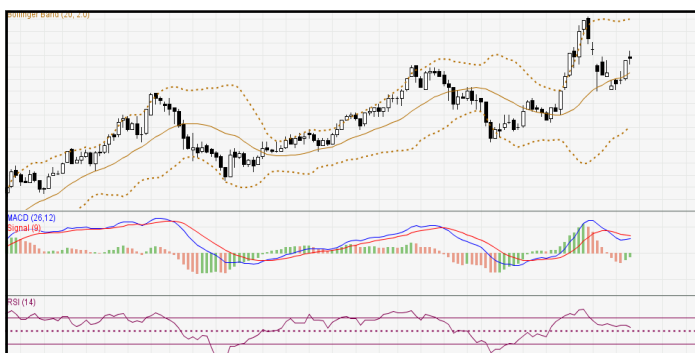
IDX Composite 6,557 - 6,611
Pola Spinning Tops terbentuk atas IDX mengindikasikan melambatnya aksi beli dihari Senin

United Tractor (UNTR)



UNTR 37400-38050 (TP 2018F:41000) Pola Short Black Candle terbentuk atas UNTR mengindikasikan Bearish Reversal. BOW 37725.

Barito Pasific Tbk (BRPT)



BRPT 2460-2560 (TP 2018F:3000). Pola Spinning Tops terbentuk atas BRPT mengindikasikan melambatnya aksi beli. BUY 2490

Bank Central Asia Tbk (BBCA)



BBCA 23125-23750 (TP 2018F:23000) Pola Black Marubozu terbentuk atas BBCA mengindikasikan Bearish Reversal. BOW 23450

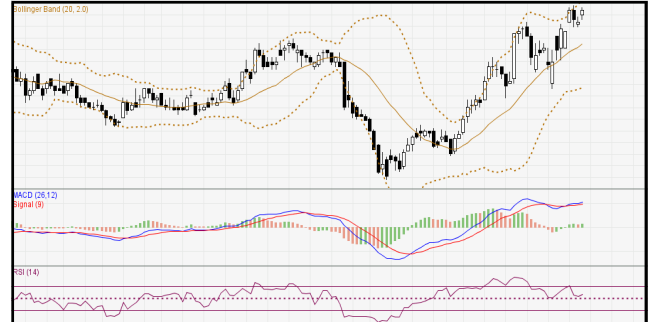
Research MNC Sekuritas
research@mncsecurities.com
(021) 2980 3111 (Hunting)

Bank Negara Indonesia Tbk (BBNI)



BBNI 9525-9700 (TP 2018F:10900) Pola Bearish Engulfing terbentuk atas BBNI mengindikasikan Bearish Reversal. BOW 9600

Adhi Karya Tbk (ADHI)



ADHI 2390-2460 (TP 2018F:2800) Pola Three Inside Up terbentuk atas ADHI mengindikasikan Bullish Continuation. BUY 2420.

Astra Internasional Tbk (ASII)



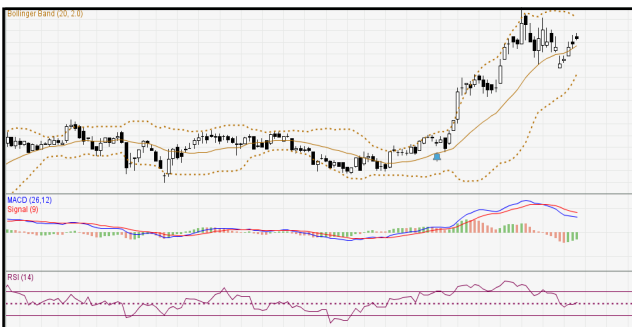
ASII 8175-8375 (TP 2018F:9350). Pola Bearish Engulfing terbentuk atas ASII mengindikasikan Bearish Reversal. BOW 8250

Harum Energy Tbk (HRUM)



HRUM 3220-3320 (TP 2018F:3400) Pola Evening Doji Star terbentuk atas HRUM mengindikasikan melambatnya aksi beli. BUY 3260

Adaro Energy Tbk (ADRO)



ADRO 2440-2510 (TP 2018F:2800) Pola Evening Doji Star terbentuk atas ADRO mengindikasikan melambatnya aksi beli . BUY 2470.

Gudang Garam Tbk (GGRM)



GGRM 79900-81350 (TP 2018F:89000) Pola Bullish Engulfing terbentuk atas GGRM mengindikasikan Bullish Reversal. BUY 80625.

1. BBRI (TP 2017F:4100)

Recommendation:

*Buy at/above 3840. Target 3860. Stoploss 3835 (Call Valid For First 3 hours)

*Buy at/above 3880. Target 3895. Stoploss 3870 (Call Valid For Full Day)

#Sell at/below 3895. Target 3870. Stoploss 3910 (Call Valid Only If High For Today is Above 3895)

#Sell at/below 3880. Target 3860. Stoploss 3885 (Call Valid Only If High For Today is Above 3895)

2. PTBA (TP 2018F:3800)

Recommendation:

*Buy at/above 3240. Target 3255. Stoploss 3230 (Call Valid For First 3 hours)

*Buy at/above 3270. Target 3290. Stoploss 3260 (Call Valid For Full Day)

#Sell at/below 3290. Target 3260. Stoploss 3300 (Call Valid Only If High For Today is Above 3290)

#Sell at/below 3270. Target 3255. Stoploss 3280 (Call Valid Only If High For Today is Above 3290)

3. AKRA (TP 2018F:7200)

Recommendation:

#Sell at/below 6050. Target 6000. (Call Valid For Full Day).

#Sell at/below 5925. Target 5875. (Call Valid For Full Day).

*Buy at/above 5875. Target 5950. (Call Valid Only If Low For Today is Below 5875).

*Buy at/above 5925. Target 6000. (Call Valid Only If Low For Today is Below 5875).

5. ITMG (TP 2018F:30000)

Recommendation:

#Sell at/below 29900. Target 29200. (Call Valid For Full Day).

#Sell at/below 28425. Target 27725. (Call Valid For Full Day).

*Buy at/above 27725. Target 28850. (Call Valid Only If Low For Today is Below 27725).

*Buy at/above 28500. Target 29200. (Call Valid Only If Low For Today is Below 27725).

4. PGAS (TP 2018F:3000)

Recommendation:

*Buy at/above 2520. Target 2540. Stoploss 2510 (Call Valid For First 3 hours)

*Buy at/above 2570. Target 2590. Stoploss 2560 (Call Valid For Full Day)

#Sell at/below 2590. Target 2550. Stoploss 2610 (Call Valid Only If High For Today is Above 2590)

#Sell at/below 2565. Target 2540. Stoploss 2580 (Call Valid Only If High For Today is Above 2590)

6. BBTN (TP 2018F:4300)

Recommendation:

*Buy at/above 3790. Target 3840. Stoploss 3760 (Call Valid For First 3 hours)

*Buy at/above 3900. Target 3950. Stoploss 3870 (Call Valid For Full Day)

#Sell at/below 3950. Target 3870. Stoploss 4000 (Call Valid Only If High For Today is Above 3950)

#Sell at/below 3890. Target 3840. Stoploss 3920 (Call Valid Only If High For Today is Above 3950)

7. ANTM (TP 2018F:1000)

Recommendation:

*Buy at/above 910. Target 915. Stoploss 905 (Call Valid For First 3 hours)

*Buy at/above 920. Target 925. Stoploss 915 (Call Valid For Full Day)

#Sell at/below 925. Target 915. Stoploss 930 (Call Valid Only If High For Today is Above 925)

#Sell at/below 920. Target 915. Stoploss 920

MNC SEKURITAS RESEARCH TEAM

Thendra Crisnanda

Head of Institutional Research, Strategy
thendra.crisnanda@mncgroup.com
(021) 2980 3111 ext. 52162

Edwin J. Sebayang

Head of Retail Research, Technical, Auto, Mining
edwin.sebayang@mncgroup.com
(021) 2980 3111 ext. 52233

I Made Adi Saputra

Head of Fixed Income Research
imade.saputra@mncgroup.com
(021) 2980 3111 ext. 52117

Victoria Venny

Telco, Toll Road, Logistics, Consumer, Poultry
victoria.nawang@mncgroup.com
(021) 2980 3111 ext. 52236

Gilang Anindito

Property, Construction, Mining, Media
gilang.dhiroboto@mncgroup.com
(021) 2980 3111 ext. 52235

Rheza Dewangga Nugraha

Junior Analyst of Fixed Income
rheza.nugraha@mncgroup.com
(021) 2980 3111 ext. 52294

Rr. Nurulita Harwaningrum

Banking, Auto, Plantation
roro.harwaningrum@mncgroup.com
(021) 2980 3111 ext. 52237

Krestanti Nugrahane Widhi

Research Associate, Plantation, Consumer
krestanti.widhi@mncgroup.com
(021) 2980 3111 ext. 52166

Sukisnawati Puspitasari

Research Associate, Cement, Mining
sukisnawati.sari@mncgroup.com
(021) 2980 3111 ext. 52307

MNC Research Investment Ratings Guidance

BUY : Share price may exceed 10% over the next 12 months

HOLD : Share price may fall within the range of +/- 10% of the next 12 months

SELL : Share price may fall by more than 10% over the next 12 months

Not Rated : Stock is not within regular research coverage

PT MNC Sekuritas

MNC Financial Center Lt. 14 – 16

Jl. Kebon Sirih No. 21 - 27, Jakarta Pusat 10340

Telp : (021) 2980 3111

Fax : (021) 3983 6899

Call Center : 1500 899

Disclaimer

This research report has been issued by PT MNC Sekuritas. It may not be reproduced or further distributed or published, in whole or in part, for any purpose. PT MNC Sekuritas has based this document on information obtained from sources it believes to be reliable but which it has not independently verified; PT MNC Sekuritas makes no guarantee, representation or warranty and accepts no responsibility to liability as to its accuracy or completeness. Expression of opinion herein are those of the research department only and are subject to change without notice. This document is not and should not be construed as an offer or the solicitation of an offer to purchase or subscribe or sell any investment. PT MNC Sekuritas and its affiliates and/or their offices, directors and employees may own or have positions in any investment mentioned herein or any investment related thereto and may from time to time add to or dispose of any such investment. PT MNC Sekuritas and its affiliates may act as market maker or have assumed an underwriting position in the securities of companies discussed herein (or investment related thereto) and may sell them to or buy them from customers on a principal basis and may also perform or seek to perform investment banking or underwriting services for or relating to those companies.