

# DAILY TECHNICAL

MNC Sekuritas Research Division  
22 Mei 2018



## IDX-Composite



IDX Composite 5,691 - 5,761  
Pola Three Inside Down terbentuk atas IDX mengindikasikan  
berlanjutnya aksi jual dihari Selasa.

## United Tractor (UNTR)



UNTR 34750-35750 (TP 2018F:41000) Pola Three Inside  
Down terbentuk atas UNTR mengindikasikan Bearish  
Continuation. BOW 35250.

## Barito Pasific Tbk (BRPT)



BRPT 2080-2180 (TP 2018F:3000). Pola Two Black Crows  
terbentuk atas BRPT mengindikasikan Bearish  
Continuation. BOW 2120.

## Bank Central Asia Tbk (BBCA)



BBCA 21425-21750 (TP 2018F:23000) Pola Spinning Tops  
terbentuk atas BBCA mengindikasikan melambatnya aksi  
jual. BOW 21600.

Research MNC Sekuritas  
[research@mncsecurities.com](mailto:research@mncsecurities.com)  
(021) 2980 3111 (Hunting)

**Bank Negara Indonesia Tbk (BBNI)**



**BBNI 7300 - 7500 (TP 2018F:10900) Pola Three Black Crows terbentuk atas BBNI mengindikasikan Bearish Continuation. BOW 7250.**

**Adhi Karya Tbk (ADHI)**



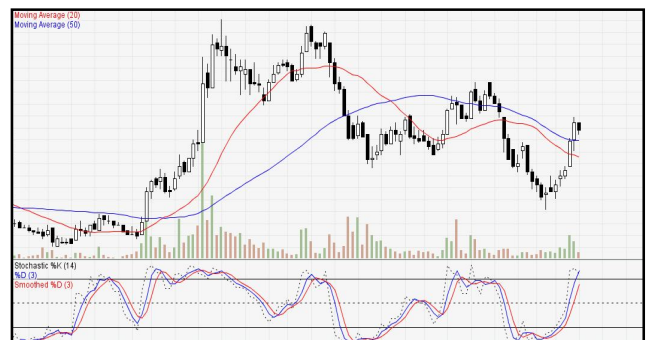
**ADHI 1860-1940 (TP 2018F:2800). Pola Three Inside Down terbentuk atas ADHI mengindikasikan Bearish Continuation. BOW 1895.**

**Astra Internasional Tbk (ASII)**



**ASII 6400 - 6750 (TP 2018F:9350). Pola Matching Low terbentuk atas ASII mengindikasikan melambatnya aksi jual. BUY 6525.**

**Harum Energy Tbk (HRUM)**



**HRUM 2750-2850 (TP 2018F:3400) Pola Bearish Harami terbentuk atas HRUM mengindikasikan Bearish Reversal. BOW 2790.**

**Adaro Energy Tbk (ADRO)**



**ADRO 1900-2010 (TP 2018F:2720) Pola Five White Soldiers terbentuk atas ADRO mengindikasikan Bullish Continuation. BUY 1950.**

**Gudang Garam Tbk (GGRM)**



**GGRM 65700-67050 (TP 2018F:89000) Pola Three Black Crows terbentuk atas GGRM mengindikasikan Bearish Continuation. BOW 66500.**

## 1. ITMG (TP 2018F:35600)

Recommendation:

\*Sell at/below 26340. Target 26000. (Call Valid For First 3 hours)

\*Sell at/below 26210. Target 25450. (Call Valid For Full Day)

#Buy at/above 25275. Target 25830. (Call Valid Only If low For Today is below 25275)

#Buy at/above 25660. Target 26000. (Call Valid Only If low For Today is below 25275).

## 2. BBRI (TP 2018F:4100)

Recommendation:

\*Buy at/above 2810. Target 2900. Stoploss 2765 (Call Valid For First 3 hours)

\*Buy at/above 2845. Target 3045. Stoploss 2745 (Call Valid For Full Day)

#Sell at/below 3090. Target 2945. Stoploss 3165 (Call Valid Only If High For Today is Above 3090)

#Sell at/below 2990. Target 2900. Stoploss 3035 (Call Valid Only If High For Today is Above 3090).

## 3. PTBA (TP 2018F:3900)

Recommendation:

#Sell at/below 3790. Target 3680. (Call Valid For Full Day for first 3 hours).

#Sell at/below 3745. Target 3500. (Call Valid For Full Day).

\*Buy at/above 3450. Target 3625. (Call Valid Only If Low For Today is Below 3450).

\*Buy at/above 3570. Target 3680. (Call Valid Only If Low For Today is Below 3450).

## 4. AKRA (TP 2018F:7200)

Recommendation:

\*Sell at/below 4580. Target 4550. (Call Valid For First 3 hours)

\*Sell at/below 4570. Target 4500. (Call Valid For Full Day)

#Buy at/above 4480. Target 4535. (Call Valid Only If low For Today is below 4480)

#Buy at/above 4515. Target 4550. (Call Valid Only If low For Today is below 4480).

## 5. PGAS (TP 2018F:3000)

Recommendation:

\*Buy at/above 1955. Target 2000. Stoploss 1930 (Call Valid For First 3 hours)

\*Buy at/above 1970. Target 2070. Stoploss 1920 (Call Valid For Full Day)

#Sell at/below 2095. Target 2020. Stoploss 2130 (Call Valid Only If low For Today is below 2095)

#Sell at/below 2045. Target 2000. Stoploss 2065 (Call Valid Only If low For Today is below 2095).

## 6. ANTM (TP 2018F:1200)

Recommendation:

#Sell at/below 870. Target 860. (Call Valid For first 3 hours).

#Sell at/below 870. Target 840. (Call Valid For Full Day).

\*Buy at/above 835. Target 855. (Call Valid Only If Low For Today is Below 835).

\*Buy at/above 850. Target 860. (Call Valid Only If Low For Today is Below 835).

## 7. BBTN (TP 2018F:4300)

Recommendation:

\*Buy at/above 2720. Target 2760. Stoploss 2705 (Call Valid For First 3 hours)

\*Buy at/above 2735. Target 2815. Stoploss 2700 (Call Valid For Full Day)

#Sell at/below 2830. Target 2775. Stoploss 2860 (Call Valid Only If High For Today is Above 2830)

#Sell at/below 2795. Target 2760. Stoploss 2810 (Call Valid Only If High For Today is Above 2830)

## MNC SEKURITAS RESEARCH TEAM

### Edwin J. Sebayang

Head of Retail Research, Technical, Auto, Mining  
edwin.sebayang@mncgroup.com  
(021) 2980 3111 ext. 52233

### Thendra Crisnanda

Head of Institutional Research, Strategy  
thendra.crisnanda@mncgroup.com  
(021) 2980 3111 ext. 52162

### I Made Adi Saputra

Head of Fixed Income Research  
imade.saputra@mncgroup.com  
(021) 2980 3111 ext. 52117

### Tomy Zulfikar

Research Analyst  
Tomy.zulfikar@mncgroup.com  
(021) 29186316 ext. 52316

### Victoria Venny

Telco, Toll Road, Logistics, Consumer, Poultry  
victoria.nawang@mncgroup.com  
(021) 2980 3111 ext. 52236

### Rheza Dewangga Nugraha

Junior Analyst of Fixed Income  
rheza.nugraha@mncgroup.com  
(021) 2980 3111 ext. 52294

### Khazar Srikandi

Research Associate  
Khazar.srikandi@mncgroup.com  
(021) 29186313 ext. 52313

### Gilang Anindito

Property, Construction, Mining, Media  
gilang.dhiroboto@mncgroup.com  
(021) 2980 3111 ext. 52235

### Krestanti Nugrahane Widhi

Research Associate, Plantation, Consumer  
krestanti.widhi@mncgroup.com  
(021) 2980 3111 ext. 52166

### Rr. Nurulita Harwaningrum

Banking, Auto, Plantation  
roro.harwaningrum@mncgroup.com  
(021) 2980 3111 ext. 52237

### Sukisnawati Puspitasari

Research Associate, Cement, Mining  
sukisnawati.sari@mncgroup.com  
(021) 2980 3111 ext. 52307

### MNC Research Investment Ratings Guidance

**BUY** : Share price may exceed 10% over the next 12 months

**HOLD** : Share price may fall within the range of +/- 10% of the next 12 months

**SELL** : Share price may fall by more than 10% over the next 12 months

## PT MNC Sekuritas

MNC Financial Center Lt. 14 – 16

Jl. Kebon Sirih No. 21 - 27, Jakarta Pusat 10340

Telp : (021) 2980 3111

Fax : (021) 3983 6899

Call Center : 1500 899

### Disclaimer

*This research report has been issued by PT MNC Sekuritas. It may not be reproduced or further distributed or published, in whole or in part, for any purpose. PT MNC Sekuritas has based this document on information obtained from sources it believes to be reliable but which it has not independently verified; PT MNC Sekuritas makes no guarantee, representation or warranty and accepts no responsibility to liability as to its accuracy or completeness. Expression of opinion herein are those of the research department only and are subject to change without notice. This document is not and should not be construed as an offer or the solicitation of an offer to purchase or subscribe or sell any investment. PT MNC Sekuritas and its affiliates and/or their offices, directors and employees may own or have positions in any investment mentioned herein or any investment related thereto and may from time to time add to or dispose of any such investment. PT MNC Sekuritas and its affiliates may act as market maker or have assumed an underwriting position in the securities of companies discussed herein (or investment related thereto) and may sell them to or buy them from customers on a principal basis and may also perform or seek to perform investment banking or underwriting services for or relating to those companies.*