

# DAILY TECHNICAL

MNC Sekuritas Research Division  
25 Mei 2018



## IDX-Composite



IDX Composite 5,910 - 5,980  
Pola Three Outside Up terbentuk atas IDX mengindikasikan peluang berlanjutnya penguatan dihari Jumat.

## United Tractor (UNTR)



UNTR 36525-37600 (TP 2018F:41000) Pola Three White Soldiers terbentuk atas UNTR mengindikasikan Bullish Continuation. BUY 36950.

## Barito Pasific Tbk (BRPT)



BRPT 2220-2380 (TP 2018F:3000). Pola Evening Doji Star terbentuk atas BRPT mengindikasikan melambatnya aksi beli. BUY 2290.

## Bank Central Asia Tbk (BBCA)



BBCA 22275-22800 (TP 2018F:23000) Pola Breakaway terbentuk atas BBKA mengindikasikan Bullush Reversal. BUY 22450.

Research MNC Sekuritas  
[research@mncsecurities.com](mailto:research@mncsecurities.com)  
(021) 2980 3111 (Hunting)

### Bank Negara Indonesia Tbk (BBNI)



**BBNI 7400 - 8000 (TP 2018F:10900) Pola Breakaway terbentuk atas BBNI mengindikasikan Bullish Reversal. BUY 7675.**

### Adhi Karya Tbk (ADHI)



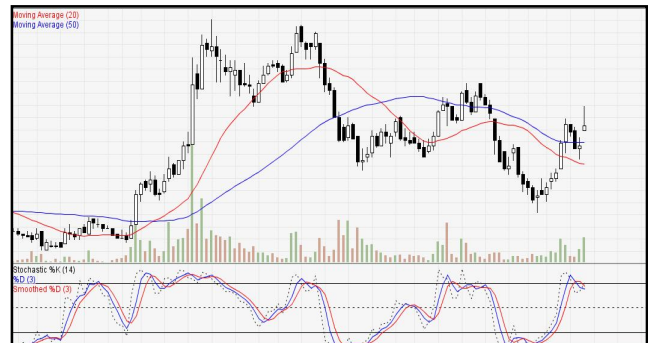
**ADHI 1910-2010 (TP 2018F:2800). Pola White Opening Marubozu terbentuk atas ADHI mengindikasikan Bullish Reversal. BUY 1950.**

### Astra Internasional Tbk (ASII)



**ASII 7125 - 7400 (TP 2018F:9350). Pola Break away terbentuk atas ASII mengindikasikan Bullish Reversal. BUY 7225.**

### Harum Energy Tbk (HRUM)



**HRUM 2770-3050 (TP 2018F:3400) Pola Three Inside Up terbentuk atas HRUM mengindikasikan Bullish Continuation. BUY 2840.**

### Adaro Energy Tbk (ADRO)



**ADRO 1770-1900 (TP 2018F:2720) Pola Bullish Harami terbentuk atas ADRO mengindikasikan Bullish Reversal. BUY 1835.**

### Gudang Garam Tbk (GGRM)



**GGRM 68225-69500 (TP 2018F:89000) Pola Two White Soldiers terbentuk atas GGRM mengindikasikan Bullish Continuation. BUY 68775.**

## 1. ITMG (TP 2018F:35600)

Recommendation:

\*Buy at/above 24725. Target 25050. Stoploss 24575 (Call Valid For First 3 hours)

\*Buy at/above 25400. Target 25700. Stoploss 25225 (Call Valid For Full Day)

#Sell at/below 25700. Target 25200. Stoploss 25950 (Call Valid Only If High For Today is Above 25700)

#Sell at/below 25350. Target 25050. Stoploss 25500 (Call Valid Only If High For Today is Above 25700).

## 2. BBRI (TP 2018F:4100)

Recommendation:

#Sell at/below 3020. Target 2930. (Call Valid For Full Day).

#Sell at/below 2830. Target 2750. (Call Valid For Full Day).

\*Buy at/above 2750. Target 2890. (Call Valid Only If Low For Today is Below 2750).

\*Buy at/above 2840. Target 2930. (Call Valid Only If Low For Today is Below 2750).

## 3. PTBA (TP 2018F:3900)

Recommendation:

#Sell at/below 4720. Target 4620. (Call Valid For Full Day).

#Sell at/below 4500. Target 4400. (Call Valid For Full Day).

\*Buy at/above 4400. Target 4670. (Call Valid Only If Low For Today is Below 4500).

\*Buy at/above 4520. Target 4620. (Call Valid Only If Low For Today is Below 4400).

## 4. AKRA (TP 2018F:7200)

Recommendation:

\*Buy at/above 4580. Target 4600. Stoploss 4570 (Call Valid For First 3 hours)

\*Buy at/above 4620. Target 4640. Stoploss 4610 (Call Valid For Full Day)

#Sell at/below 4640. Target 4610. Stoploss 4660 (Call Valid Only If High For Today is Above 4640)

#Sell at/below 4620. Target 4600. Stoploss 4630 (Call Valid Only If High For Today is Above 4640).

## 5. PGAS (TP 2018F:3000)

Recommendation:

#Sell at/below 2080. Target 1895. (Call Valid For Full Day).

#Sell at/below 1680. Target 1500. (Call Valid For Full Day).

\*Buy at/above 1500. Target 1800. (Call Valid Only If Low For Today is Below 1500).

\*Buy at/above 1710. Target 1895. (Call Valid Only If Low For Today is Below 1500).

## 6. ANTM (TP 2018F:1200)

Recommendation:

#Sell at/below 870. Target 845. (Call Valid For Full Day).

#Sell at/below 820. Target 790. (Call Valid For Full Day).

\*Buy at/above 790. Target 830. (Call Valid Only If Low For Today is Below 790).

\*Buy at/above 820. Target 845. (Call Valid Only If Low For Today is Below 790).

## 7. BBTN (TP 2018F:4300)

Recommendation:

#Sell at/below 2960. Target 2870. (Call Valid For Full Day).

#Sell at/below 2770. Target 2680. (Call Valid For Full Day).

\*Buy at/above 2680. Target 2825. (Call Valid Only If Low For Today is Below 2680).

\*Buy at/above 2780. Target 2870. (Call Valid Only If Low For Today is Below 2680).

## MNC SEKURITAS RESEARCH TEAM

### Edwin J. Sebayang

Head of Retail Research, Technical, Auto, Mining  
edwin.sebayang@mncgroup.com  
(021) 2980 3111 ext. 52233

### Thendra Crisnanda

Head of Institutional Research, Strategy  
thendra.crisnanda@mncgroup.com  
(021) 2980 3111 ext. 52162

### I Made Adi Saputra

Head of Fixed Income Research  
imade.saputra@mncgroup.com  
(021) 2980 3111 ext. 52117

### Tomy Zulfikar

Research Analyst  
Tomy.zulfikar@mncgroup.com  
(021) 29186316 ext. 52316

### Victoria Venny

Telco, Toll Road, Logistics, Consumer, Poultry  
victoria.nawang@mncgroup.com  
(021) 2980 3111 ext. 52236

### Rheza Dewangga Nugraha

Junior Analyst of Fixed Income  
rheza.nugraha@mncgroup.com  
(021) 2980 3111 ext. 52294

### Khazar Srikandi

Research Associate  
Khazar.srikandi@mncgroup.com  
(021) 29186313 ext. 52313

### Gilang Anindito

Property, Construction, Mining, Media  
gilang.dhiroboto@mncgroup.com  
(021) 2980 3111 ext. 52235

### Krestanti Nugrahane Widhi

Research Associate, Plantation, Consumer  
krestanti.widhi@mncgroup.com  
(021) 2980 3111 ext. 52166

### Rr. Nurulita Harwaningrum

Banking, Auto, Plantation  
roro.harwaningrum@mncgroup.com  
(021) 2980 3111 ext. 52237

### Sukisnawati Puspitasari

Research Associate, Cement, Mining  
sukisnawati.sari@mncgroup.com  
(021) 2980 3111 ext. 52307

### MNC Research Investment Ratings Guidance

**BUY** : Share price may exceed 10% over the next 12 months

**HOLD** : Share price may fall within the range of +/- 10% of the next 12 months

**SELL** : Share price may fall by more than 10% over the next 12 months

## PT MNC Sekuritas

MNC Financial Center Lt. 14 – 16

Jl. Kebon Sirih No. 21 - 27, Jakarta Pusat 10340

Telp : (021) 2980 3111

Fax : (021) 3983 6899

Call Center : 1500 899

### Disclaimer

*This research report has been issued by PT MNC Sekuritas. It may not be reproduced or further distributed or published, in whole or in part, for any purpose. PT MNC Sekuritas has based this document on information obtained from sources it believes to be reliable but which it has not independently verified; PT MNC Sekuritas makes no guarantee, representation or warranty and accepts no responsibility to liability as to its accuracy or completeness. Expression of opinion herein are those of the research department only and are subject to change without notice. This document is not and should not be construed as an offer or the solicitation of an offer to purchase or subscribe or sell any investment. PT MNC Sekuritas and its affiliates and/or their offices, directors and employees may own or have positions in any investment mentioned herein or any investment related thereto and may from time to time add to or dispose of any such investment. PT MNC Sekuritas and its affiliates may act as market maker or have assumed an underwriting position in the securities of companies discussed herein (or investment related thereto) and may sell them to or buy them from customers on a principal basis and may also perform or seek to perform investment banking or underwriting services for or relating to those companies.*