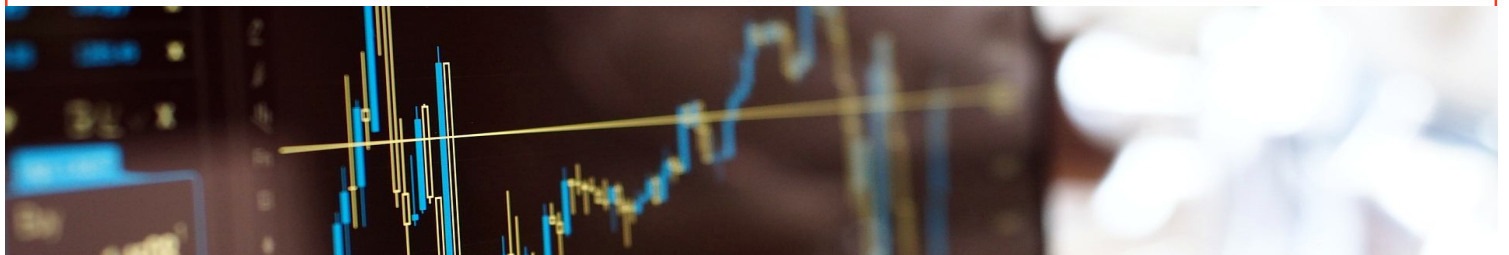


# DAILY TECHNICAL

MNC Sekuritas Research Division  
28 Mei 2018



## IDX-Composite



IDX Composite 5,949- 6,001  
Pola Three White Soldiers terbentuk atas IDX mengindikasikan peluang berlanjutnya penguatan dihari Senin.

## United Tractor (UNTR)



UNTR 36875-38800 (TP 2018F:41000) Pola Three White Soldiers terbentuk atas UNTR mengindikasikan Bullish Continuation. BUY 37500.

## Barito Pasific Tbk (BRPT)



BRPT 2130-2330 (TP 2018F:3000). Pola Three Inside Down terbentuk atas BRPT mengindikasikan Bearish Continuation. BOW 2210.

## Bank Central Asia Tbk (BBCA)



BBCA 22400-22825 (TP 2018F:23000) Pola Three Inside Up terbentuk atas BBCA mengindikasikan Bullish Continuation. BUY 22550.

Research MNC Sekuritas  
[research@mncsecurities.com](mailto:research@mncsecurities.com)  
(021) 2980 3111 (Hunting)

**Bank Negara Indonesia Tbk (BBNI)**



**BBNI 7725 - 8100 (TP 2018F:10900) Pola Two White Soldiers terbentuk atas BBNI mengindikasikan Bullish Continuation. BUY 7975.**

**Adhi Karya Tbk (ADHI)**



**ADHI 1910-2000 (TP 2018F:2800). Pola Short Black Candle terbentuk atas ADHI mengindikasikan melambatnya aksi beli. BUY 1950**

**Astra Internasional Tbk (ASII)**



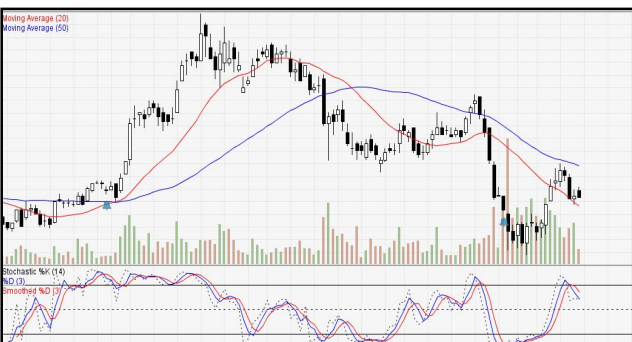
**ASII 7100 - 7400 (TP 2018F:9350). Pola Hammett terbentuk atas ASII mengindikasikan melambatnya aksi beli. BUY 7250.**

**Harum Energy Tbk (HRUM)**



**HRUM 2780-2900 (TP 2018F:3400) Pola Three Bearish Engulfing terbentuk atas HRUM mengindikasikan Bearish Reversal. BOW 2820.**

**Adaro Energy Tbk (ADRO)**



**ADRO 1770-1890 (TP 2018F:2720) Pola Bearish Engulfing terbentuk atas ADRO mengindikasikan Bearish Reversal. BOW 1820.**

**Gudang Garam Tbk (GGRM)**



**GGRM 68050-69450 (TP 2018F:89000) Pola Hammer terbentuk atas GGRM mengindikasikan melambatnya aksi beli. BUY 68900.**

## 1. ITMG (TP 2018F:35600)

Recommendation:

#Sell at/below 25075. Target 24550. (Call Valid For Full Day).

#Sell at/below 23950. Target 24400. (Call Valid For Full Day).

\*Buy at/above 23400. Target 24275. (Call Valid Only If Low For Today is Below 23400).

\*Buy at/above 24000. Target 24550. (Call Valid Only If Low For Today is Below 23400).

## 2. BBRI (TP 2018F:4100)

Recommendation:

\*Buy at/above 3090. Target 3120. Stoploss 3080 (Call Valid For First 3 hours)

\*Buy at/above 3150. Target 3175. Stoploss 3130 (Call Valid For Full Day)

#Sell at/below 3175. Target 3130. Stoploss 3200 (Call Valid Only If High For Today is Above 3175)

#Sell at/below 3145. Target 3120. Stoploss 3160 (Call Valid Only If High For Today is Above 3175).

## 3. PTBA (TP 2018F:3900)

Recommendation:

\*Buy at/above 3790. Target 3825. Stoploss 3770 (Call Valid For First 3 hours)

\*Buy at/above 3860. Target 3900. Stoploss 3850 (Call Valid For Full Day)

#Sell at/below 3900. Target 3890. Stoploss 3930 (Call Valid Only If High For Today is Above 3900)

#Sell at/below 3860. Target 3825. Stoploss 3880 (Call Valid Only If High For Today is Above 3900).

## 4. AKRA (TP 2018F:7200)

Recommendation:

\*Buy at/above 4580. Target 4600. Stoploss 4570 (Call Valid For First 3 hours)

\*Buy at/above 4620. Target 4640. Stoploss 4610 (Call Valid For Full Day)

#Sell at/below 4640. Target 4610. Stoploss 4660 (Call Valid Only If High For Today is Above 4640)

#Sell at/below 4620. Target 4600. Stoploss 4630 (Call Valid Only If High For Today is Above 4640).

## 5. PGAS (TP 2018F:3000)

Recommendation:

\*Buy at/above 2130. Target 2200. Stoploss 2100 (Call Valid For First 3 hours)

\*Buy at/above 2775. Target 2340. Stoploss 2240 (Call Valid For Full Day)

#Sell at/below 2340. Target 2230. Stoploss 2395 (Call Valid Only If High For Today is Above 2340)

#Sell at/below 2270. Target 2200. Stoploss 2300 (Call Valid Only If High For Today is Above 2340).

## 6. ANTM (TP 2018F:1200)

Recommendation:

\*Buy at/above 880. Target 890. Stoploss 870 (Call Valid For First 3 hours)

\*Buy at/above 900. Target 915. Stoploss 4 900 (Call Valid For Full Day)

#Sell at/below 915. Target 895. Stoploss 920 (Call Valid Only If High For Today is Above 915)

#Sell at/below 900. Target 890. Stoploss 910 (Call Valid Only If High For Today is Above 915).

## 7. BBTN (TP 2018F:4300)

Recommendation:

#Sell at/below 2960. Target 2870. (Call Valid For Full Day).

#Sell at/below 2770. Target 2680. (Call Valid For Full Day).

\*Buy at/above 2680. Target 2825. (Call Valid Only If Low For Today is Below 2680).

\*Buy at/above 2780. Target 2870. (Call Valid Only If Low For Today is Below 2680).

## MNC SEKURITAS RESEARCH TEAM

### Edwin J. Sebayang

Head of Retail Research, Technical, Auto, Mining  
edwin.sebayang@mncgroup.com  
(021) 2980 3111 ext. 52233

### Thendra Crisnanda

Head of Institutional Research, Strategy  
thendra.crisnanda@mncgroup.com  
(021) 2980 3111 ext. 52162

### I Made Adi Saputra

Head of Fixed Income Research  
imade.saputra@mncgroup.com  
(021) 2980 3111 ext. 52117

### Tomy Zulfikar

Research Analyst  
Tomy.zulfikar@mncgroup.com  
(021) 29186316 ext. 52316

### Victoria Venny

Telco, Toll Road, Logistics, Consumer, Poultry  
victoria.nawang@mncgroup.com  
(021) 2980 3111 ext. 52236

### Rheza Dewangga Nugraha

Junior Analyst of Fixed Income  
rheza.nugraha@mncgroup.com  
(021) 2980 3111 ext. 52294

### Khazar Srikandi

Research Associate  
Khazar.srikandi@mncgroup.com  
(021) 29186313 ext. 52313

### Gilang Anindito

Property, Construction, Mining, Media  
gilang.dhiroboto@mncgroup.com  
(021) 2980 3111 ext. 52235

### Krestanti Nugrahane Widhi

Research Associate, Plantation, Consumer  
krestanti.widhi@mncgroup.com  
(021) 2980 3111 ext. 52166

### Rr. Nurulita Harwaningrum

Banking, Auto, Plantation  
roro.harwaningrum@mncgroup.com  
(021) 2980 3111 ext. 52237

### Sukisnawati Puspitasari

Research Associate, Cement, Mining  
sukisnawati.sari@mncgroup.com  
(021) 2980 3111 ext. 52307

### MNC Research Investment Ratings Guidance

**BUY** : Share price may exceed 10% over the next 12 months

**HOLD** : Share price may fall within the range of +/- 10% of the next 12 months

**SELL** : Share price may fall by more than 10% over the next 12 months

## PT MNC Sekuritas

MNC Financial Center Lt. 14 – 16

Jl. Kebon Sirih No. 21 - 27, Jakarta Pusat 10340

Telp : (021) 2980 3111

Fax : (021) 3983 6899

Call Center : 1500 899

### Disclaimer

*This research report has been issued by PT MNC Sekuritas. It may not be reproduced or further distributed or published, in whole or in part, for any purpose. PT MNC Sekuritas has based this document on information obtained from sources it believes to be reliable but which it has not independently verified; PT MNC Sekuritas makes no guarantee, representation or warranty and accepts no responsibility to liability as to its accuracy or completeness. Expression of opinion herein are those of the research department only and are subject to change without notice. This document is not and should not be construed as an offer or the solicitation of an offer to purchase or subscribe or sell any investment. PT MNC Sekuritas and its affiliates and/or their offices, directors and employees may own or have positions in any investment mentioned herein or any investment related thereto and may from time to time add to or dispose of any such investment. PT MNC Sekuritas and its affiliates may act as market maker or have assumed an underwriting position in the securities of companies discussed herein (or investment related thereto) and may sell them to or buy them from customers on a principal basis and may also perform or seek to perform investment banking or underwriting services for or relating to those companies.*