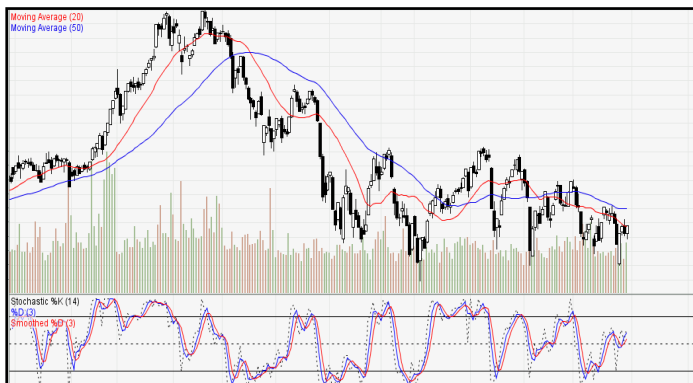
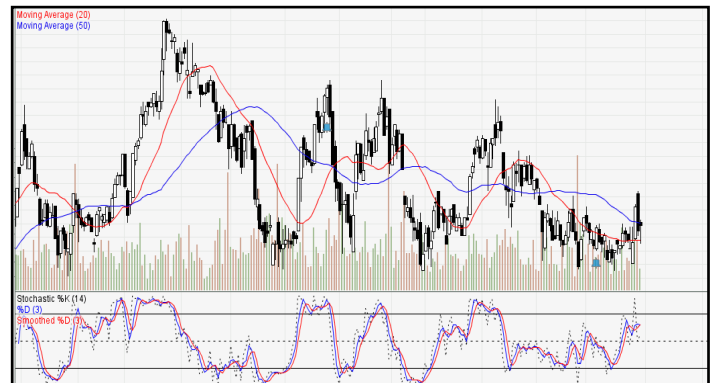


## IDX-Composite



**IDX Composite 5,791 - 5,881**  
**Pola Three Inside Up terbentuk atas IDX mengindikasikan peluang Berlanjutnya Aksi Beli dihari Kamis.**

## United Tractor (UNTR)



**UNTR 32650-34325 (TP 2018F:42225) Pola Bullish Kicking terbentuk atas UNTR mengindikasikan Bullish Reversal. BUY 33500**

## Barito Pasific Tbk (BRPT)



**BRPT 1855 - 1955 (TP 2018F:2550). Pola Inverted Hammer terbentuk atas BRPT mengindikasikan melambatnya aksi beli. BUY 1875**

## Bank Central Asia Tbk (BBCA)



**BBCA 23400-24050 (TP 2018F:25500) Pola Spinning Tops terbentuk atas BBCA mengindikasikan melambatnya aksi beli. BUY 23650**

### Bank Negara Indonesia Tbk (BBNI)



BBNI 7100 - 7500 (TP 2018F:9125) Pola Three Outside Up terbentuk atas BBNI mengindikasikan Bullish Continuation. BUY 7325

### Jasa Marga Tbk (JSMR)



JSMR 4080-4220 (TP 2018F:5900). Pola Spinning Tops terbentuk atas JSMR mengindikasikan peluang sideways. BUY 4150.

### Indah Kiat Pulp & Paper Tbk (INKP)



INKP 12375 - 13275 (TP 2018F:20750). Pola Evening Doji Star terbentuk atas INKP mengindikasikan melambatnya aksi beli. BUY 12725

### Aneka Tambang Tbk (ANTM)



ANTM 660-700 (TP 2018F:1215). Pola Matching Low terbentuk atas ANTM mengindikasikan melambatnya aksi jual. BUY 680

### Adaro Energy Tbk (ADRO)



ADRO 1620 - 1710 (TP 2018F:2600) Pola Matching Low terbentuk atas ADRO mengindikasikan Bullish Reversal. BUY 1650.

### Gudang Garam Tbk (GGRM)



GGRM 71475 - 73300 (TP 2018F:85375) Pola Six Black Crows terbentuk atas GGRM mengindikasikan Bearish Continuation. BOW 72275

## 1. ITMG (TP 2018F:35600)

Recommendation:

- \*Go Long at / above 25725. Keep Stoploss at 25700.  
Target 1 is 25925.
- \*Go Long at / above 25800. Keep Stoploss at 25725.  
Target 2 is 26050.
- \*Go Long at / above 25875. Keep Stoploss at 25800.  
Target 3 is 26225.

## 2. BBRI (TP 2017F:4100)

Recommendation:

- #Go Short at / below 3030. Keep Stoploss at 3040.  
Target 1 is 2980.
- #Go Short at / below 3010. Keep Stoploss at 3030.  
Target 2 is 2970.

## 3. PTBA (TP 2018F:4640)

Recommendation:

- \*Go Long at / above 4140. Keep Stoploss at 4130.  
Target 1 is 4180.
- \*Go Long at / above 4160. Keep Stoploss at 4140.  
Target 2 is 4210.
- \*Go Long at / above 4180. Keep Stoploss at 4160.  
Target 3 is 4240.

## 4. AKRA (TP 2018F:7200)

Recommendation:

- \*Go Long at / above 3430. Keep Stoploss at 3420.  
Target 1 is 3460.
- \*Go Long at / above 3440. Keep Stoploss at 3430.  
Target 2 is 3480.
- \*Go Long at / above 3450. Keep Stoploss at 3440.  
Target 3 is 3500.

## 5. PGAS (TP 2018F:3000)

Recommendation:

- \*Go Long at / above 2110. Keep Stoploss at 2100.  
Target 1 is 2150.
- \*Go Long at / above 2120. Keep Stoploss at 2110.  
Target 2 is 2170.
- \*Go Long at / above 2130. Keep Stoploss at 2120.  
Target 3 is 2190.

## 6. ANTM (TP 2018F:1200)

Recommendation:

- \*Go Long at / above 670. Keep Stoploss at 665.  
Target 1 is 680.
- \*Go Long at / above 675. Keep Stoploss at 670.  
Target 2 is 690.
- \*Go Long at / above 680. Keep Stoploss at 675.  
Target 3 is 700.

## 7. BBTN (TP 2018F:4300)

Recommendation:

- #Go Short at / below 2130. Keep Stoploss at 2140.  
Target 1 is 2160.
- #Go Short at / below 2100. Keep Stoploss at 2130.  
Target 2 is 2040.

## MNC SEKURITAS RESEARCH TEAM

### Edwin J. Sebayang

Head of Retail Research, Technical, Auto, Mining  
edwin.sebayang@mncgroup.com  
(021) 2980 3111 ext. 52233

### Thendra Crisnanda

Head of Institutional Research, Strategy  
thendra.crisnanda@mncgroup.com  
(021) 2980 3111 ext. 52162

### I Made Adi Saputra

Head of Fixed Income Research  
imade.saputra@mncgroup.com  
(021) 2980 3111 ext. 52117

### Tomy Zulfikar

Research Analyst  
Tomy.zulfikar@mncgroup.com  
(021) 29186316 ext. 52316

### Victoria Venny

Telco, Toll Road, Logistics, Consumer, Poultry  
victoria.nawang@mncgroup.com  
(021) 2980 3111 ext. 52236

### Rr. Nurulita Harwaningrum

Banking, Auto, Plantation  
roro.harwaningrum@mncgroup.com  
(021) 2980 3111 ext. 52237

### Khazar Srikandi

Research Associate  
Khazar.srikandi@mncgroup.com  
(021) 29186313 ext. 52313

### M. Rudy Setiawan

Research Associate, Construction  
muhamad.setiawan@mncgroup.com  
(021) 2980 3111 ext. 52317

### Krestanti Nugrahane Widhi

Research Associate, Plantation, Consumer  
krestanti.widhi@mncgroup.com  
(021) 2980 3111 ext. 52166

### Ikhsan H. Santoso

Research Associate  
ikhsan.santoso@mncgroup.com  
(021) 2980 3111 ext. 52235

### Sukisnawati Puspitasari

Research Associate, Cement, Mining  
sukisnawati.sari@mncgroup.com  
(021) 2980 3111 ext. 52307

### MNC Research Investment Ratings Guidance

**BUY** : Share price may exceed 10% over the next 12 months

**HOLD** : Share price may fall within the range of +/- 10% of the next 12 months

**SELL** : Share price may fall by more than 10% over the next 12 months

## PT MNC Sekuritas

MNC Financial Center Lt. 14 – 16

Jl. Kebon Sirih No. 21 - 27, Jakarta Pusat 10340

Telp : (021) 2980 3111

Fax : (021) 3983 6899

Call Center : 1500 899

### Disclaimer

*This research report has been issued by PT MNC Sekuritas. It may not be reproduced or further distributed or published, in whole or in part, for any purpose. PT MNC Sekuritas has based this document on information obtained from sources it believes to be reliable but which it has not independently verified; PT MNC Sekuritas makes no guarantee, representation or warranty and accepts no responsibility to liability as to its accuracy or completeness. Expression of opinion herein are those of the research department only and are subject to change without notice. This document is not and should not be construed as an offer or the solicitation of an offer to purchase or subscribe or sell any investment. PT MNC Sekuritas and its affiliates and/or their offices, directors and employees may own or have positions in any investment mentioned herein or any investment related thereto and may from time to time add to or dispose of any such investment. PT MNC Sekuritas and its affiliates may act as market maker or have assumed an underwriting position in the securities of companies discussed herein (or investment related thereto) and may sell them to or buy them from customers on a principal basis and may also perform or seek to perform investment banking or underwriting services for or relating to those companies.*