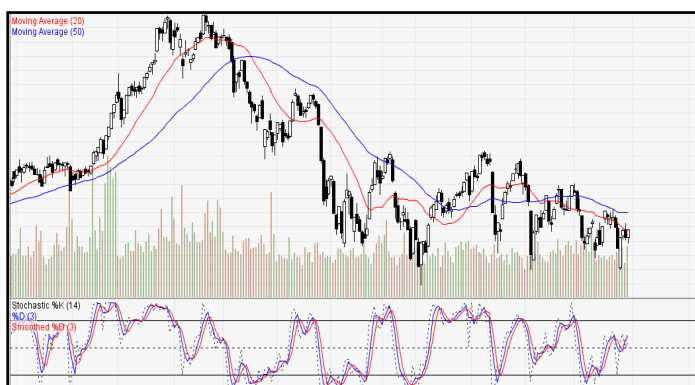


IDX-Composite



IDX Composite 5,815 - 5,924
Pola Three White Soldiers terbentuk atas IDX
mengindikasikan peluang Berlanjutnya PENGUATAN dihari
Jumat.

United Tractor (UNTR)



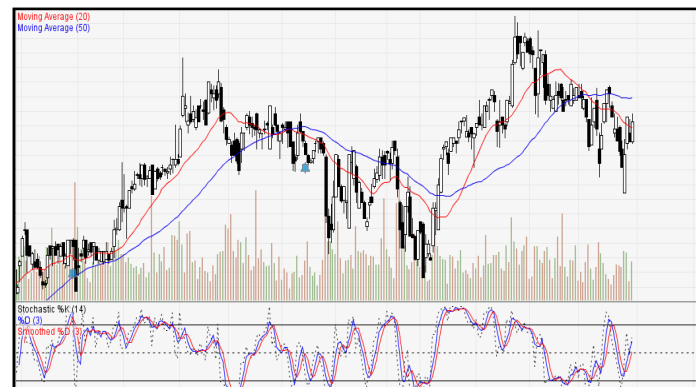
UNTR 33300-33750 (TP 2018F:42225) Pola Morning Doji Star
terbentuk atas UNTR mengindikasikan munculnya minor profit
taking. BOW 33450

Barito Pasific Tbk (BRPT)



BRPT 1820 - 1940 (TP 2018F:2550). Pola Hammer terbentuk atas
BRPT mengindikasikan munculnya minor profit taking. BOW
1865

Bank Central Asia Tbk (BBCA)



BBCA 23650-24175 (TP 2018F:25500) Pola Spinning Tops
terbentuk atas BBCA mengindikasikan melambatnya aksi beli.
BUY 23800

Bank Negara Indonesia Tbk (BBNI)



BBNI 7250 - 7550 (TP 2018F:9125) Pola Three White Soldiers terbentuk atas BBNI mengindikasikan Bullish Continuation. BUY 7425

Jasa Marga Tbk (JSMR)



JSMR 4050-4190 (TP 2018F:5900). Pola Black Marubozu terbentuk atas JSMR mengindikasikan Bearish Reversal. BOW 4110.

Indah Kiat Pulp & Paper Tbk (INKP)



INKP 10225 - 12700 (TP 2018F:20750). Pola Black Marubozu terbentuk atas INKP mengindikasikan Bearish Reversal. BOW 11675

Aneka Tambang Tbk (ANTM)



ANTM 665-715 (TP 2018F:1215). Pola Bullish Harami terbentuk atas ANTM mengindikasikan Bullish Reversal. BUY 685

Adaro Energy Tbk (ADRO)



ADRO 1620 - 1600 (TP 2018F:2600) Pola Two Black Crows terbentuk atas ADRO mengindikasikan Bearish Continuation. BOW 1645.

Gudang Garam Tbk (GGRM)



GGRM 71475 - 73300 (TP 2018F:85375) Pola Matching Low terbentuk atas GGRM mengindikasikan Bullish Reversal. BUY 72300

1. ITMG (TP 2018F:35600)

Recommendation:

- *Go Long at / above 25725. Keep Stoploss at 25700.
Target 1 is 25925.
- *Go Long at / above 25800. Keep Stoploss at 25725.
Target 2 is 26050.
- *Go Long at / above 25875. Keep Stoploss at 25800.
Target 3 is 26225.

2. BBRI (TP 2017F:4100)

Recommendation:

- #Go Short at / below 3030. Keep Stoploss at 3040.
Target 1 is 2980.
- #Go Short at / below 3010. Keep Stoploss at 3030.
Target 2 is 2970.

3. PTBA (TP 2018F:4640)

Recommendation:

- *Go Long at / above 4140. Keep Stoploss at 4130.
Target 1 is 4180.
- *Go Long at / above 4160. Keep Stoploss at 4140.
Target 2 is 4210.
- *Go Long at / above 4180. Keep Stoploss at 4160.
Target 3 is 4240.

4. AKRA (TP 2018F:7200)

Recommendation:

- *Go Long at / above 3430. Keep Stoploss at 3420.
Target 1 is 3460.
- *Go Long at / above 3440. Keep Stoploss at 3430.
Target 2 is 3480.
- *Go Long at / above 3450. Keep Stoploss at 3440.
Target 3 is 3500.

5. PGAS (TP 2018F:3000)

Recommendation:

- *Go Long at / above 2110. Keep Stoploss at 2100.
Target 1 is 2150.
- *Go Long at / above 2120. Keep Stoploss at 2110.
Target 2 is 2170.
- *Go Long at / above 2130. Keep Stoploss at 2120.
Target 3 is 2190.

6. ANTM (TP 2018F:1200)

Recommendation:

- *Go Long at / above 670. Keep Stoploss at 665.
Target 1 is 680.
- *Go Long at / above 675. Keep Stoploss at 670.
Target 2 is 690.
- *Go Long at / above 680. Keep Stoploss at 675.
Target 3 is 700.

7. BBTN (TP 2018F:4300)

Recommendation:

- #Go Short at / below 2130. Keep Stoploss at 2140.
Target 1 is 2160.
- #Go Short at / below 2100. Keep Stoploss at 2130.
Target 2 is 2040.

MNC SEKURITAS RESEARCH TEAM

Edwin J. Sebayang

Head of Retail Research, Technical, Auto, Mining
edwin.sebayang@mncgroup.com
(021) 2980 3111 ext. 52233

Thendra Crisnanda

Head of Institutional Research, Strategy
thendra.crisnanda@mncgroup.com
(021) 2980 3111 ext. 52162

I Made Adi Saputra

Head of Fixed Income Research
imade.saputra@mncgroup.com
(021) 2980 3111 ext. 52117

Tomy Zulfikar

Research Analyst
Tomy.zulfikar@mncgroup.com
(021) 29186316 ext. 52316

Victoria Venny

Telco, Toll Road, Logistics, Consumer, Poultry
victoria.nawang@mncgroup.com
(021) 2980 3111 ext. 52236

Rr. Nurulita Harwaningrum

Banking, Auto, Plantation
roro.harwaningrum@mncgroup.com
(021) 2980 3111 ext. 52237

Khazar Srikandi

Research Associate
Khazar.srikandi@mncgroup.com
(021) 29186313 ext. 52313

M. Rudy Setiawan

Research Associate, Construction
muhamad.setiawan@mncgroup.com
(021) 2980 3111 ext. 52317

Krestanti Nugrahane Widhi

Research Associate, Plantation, Consumer
krestanti.widhi@mncgroup.com
(021) 2980 3111 ext. 52166

Ikhsan H. Santoso

Research Associate
ikhsan.santoso@mncgroup.com
(021) 2980 3111 ext. 52235

Sukisnawati Puspitasari

Research Associate, Cement, Mining
sukisnawati.sari@mncgroup.com
(021) 2980 3111 ext. 52307

MNC Research Investment Ratings Guidance

BUY : Share price may exceed 10% over the next 12 months

HOLD : Share price may fall within the range of +/- 10% of the next 12 months

SELL : Share price may fall by more than 10% over the next 12 months

PT MNC Sekuritas

MNC Financial Center Lt. 14 – 16

Jl. Kebon Sirih No. 21 - 27, Jakarta Pusat 10340

Telp : (021) 2980 3111

Fax : (021) 3983 6899

Call Center : 1500 899

Disclaimer

This research report has been issued by PT MNC Sekuritas. It may not be reproduced or further distributed or published, in whole or in part, for any purpose. PT MNC Sekuritas has based this document on information obtained from sources it believes to be reliable but which it has not independently verified; PT MNC Sekuritas makes no guarantee, representation or warranty and accepts no responsibility to liability as to its accuracy or completeness. Expression of opinion herein are those of the research department only and are subject to change without notice. This document is not and should not be construed as an offer or the solicitation of an offer to purchase or subscribe or sell any investment. PT MNC Sekuritas and its affiliates and/or their offices, directors and employees may own or have positions in any investment mentioned herein or any investment related thereto and may from time to time add to or dispose of any such investment. PT MNC Sekuritas and its affiliates may act as market maker or have assumed an underwriting position in the securities of companies discussed herein (or investment related thereto) and may sell them to or buy them from customers on a principal basis and may also perform or seek to perform investment banking or underwriting services for or relating to those companies.