



IDX-Composite



IDX Composite 5,705 - 5,794
Pola Two Black Crows terbentuk atas IDX mengindikasikan Berlanjutnya perlemahan dihari Selasa.

United Tractor (UNTR)



UNTR 31750-34400 (TP 2018F:42225) Pola Bearish Engulfing terbentuk atas UNTR mengindikasikan Bearish Reversal.
BOW 33050

Barito Pasific Tbk (BRPT)



BRPT 1780 - 1830 (TP 2018F:2550). Pola Three Black Crows terbentuk atas BRPT mengindikasikan Bearish Continuation
BOW 1800

Bank Central Asia Tbk (BBCA)



BBCA 23375-24000 (TP 2018F:25500) Pola Black Marubozu terbentuk atas BBCA mengindikasikan Bearish Reversal.
BOW 23675

Bank Negara Indonesia Tbk (BBNI)



BBNI 7425 - 7750 (TP 2018F:9125) Pola Bearish Kicking didaerah Overbought terbentuk atas BBNI mengindikasikan Bearish Reversal. BOW 7575

Jasa Marga Tbk (JSMR)



JSMR 3860-3990 (TP 2018F:5900). Pola Three Black Crows terbentuk atas JSMR mengindikasikan Bearish Continuation. BOW 3920.

Waskita Karya Tbk (WSKT)



WSKT 1460 - 1560 (TP 2018F: 2395). Pola Two Black Crows terbentuk atas WSKT mengindikasikan Bearish Continuation. BOW 1510

Unilever Indonesia Tbk (UNVR)



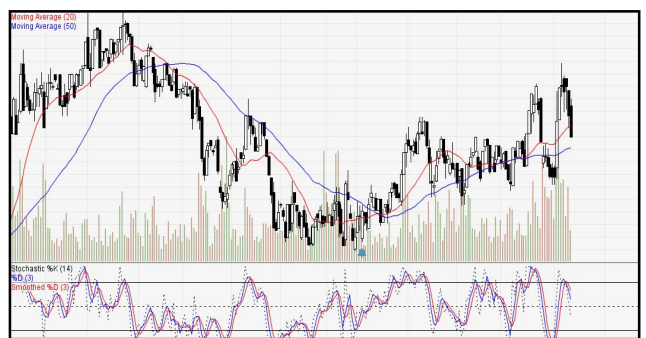
UNVR 37800-40450 (TP 2018F:48000). Pola Three Black Crows terbentuk atas UNVR mengindikasikan Bearish Continuation. BOW 39350

Wijaya Karya Tbk (WIKA)



WIKA 1130-1210 (TP 2018F:1990). Pola Three Black Crows terbentuk atas WIKA mengindikasikan Bearish Continuation. BOW 1165

Gudang Garam Tbk (GGRM)



GGRM 73550 - 77825 (TP 2018F:85375) Pola Three Black Crows terbentuk atas GGRM mengindikasikan Bearish Continuation. BOW 75675

1. ITMG (TP 2018F:35600)

Recommendation:

#Go Short at / below 23950. Keep Stoploss at 23975. Target 1 is 23375.

#Go Short at / below 23725. Keep Stoploss at 23950. Target 2 is 23250.

2. BBRI (TP 2017F:4100)

Recommendation:

*Go Long at / above 3280. Keep Stoploss at 3270. Target 1 is 3310.

*Go Long at / above 3290. Keep Stoploss at 3280. Target 2 is 3330.

*Go Long at / above 3400. Keep Stoploss at 3290. Target 3 is 3350.

3. PTBA (TP 2018F:4640)

Recommendation:

*Go Long at / above 4360. Keep Stoploss at 4350. Target 1 is 4420.

*Go Long at / above 4380. Keep Stoploss at 4360. Target 2 is 4470.

*Go Long at / above 4400. Keep Stoploss at 4380. Target 3 is 4520.

4. AKRA (TP 2018F:7200)

Recommendation:

*Go Long at / above 3340. Keep Stoploss at 3330. Target 1 is 3370.

*Go Long at / above 3350. Keep Stoploss at 3340. Target 2 is 3400.

*Go Long at / above 3360. Keep Stoploss at 3350. Target 3 is 3430.

5. PGAS (TP 2018F:3000)

Recommendation:

*Go Long at / above 2060. Keep Stoploss at 2050. Target 1 is 2090.

*Go Long at / above 2070. Keep Stoploss at 2060. Target 2 is 2110.

*Go Long at / above 2080. Keep Stoploss at 2070. Target 3 is 2130.

6. ANTM (TP 2018F:1200)

Recommendation:

*Go Long at / above 685. Keep Stoploss at 680. Target 1 is 690.

*Go Long at / above 690. Keep Stoploss at 685. Target 2 is 695.

*Go Long at / above 695. Keep Stoploss at 690. Target 3 is 700.

7. BBTN (TP 2018F:4300)

Recommendation:

*Go Long at / above 2190. Keep Stoploss at 2180. Target 1 is 2250.

*Go Long at / above 2210. Keep Stoploss at 2190. Target 2 is 2290.

*Go Long at / above 2230. Keep Stoploss at 2210. Target 3 is 2330.

MNC SEKURITAS RESEARCH TEAM

Edwin J. Sebayang

Head of Retail Research, Technical, Auto, Mining
edwin.sebayang@mncgroup.com
(021) 2980 3111 ext. 52233

Thendra Crisnanda

Head of Institutional Research, Strategy
thendra.crisnanda@mncgroup.com
(021) 2980 3111 ext. 52162

I Made Adi Saputra

Head of Fixed Income Research
imade.saputra@mncgroup.com
(021) 2980 3111 ext. 52117

Tomy Zulfikar

Research Analyst
Tomy.zulfikar@mncgroup.com
(021) 29186316 ext. 52316

Victoria Venny

Telco, Toll Road, Logistics, Consumer, Poultry
victoria.nawang@mncgroup.com
(021) 2980 3111 ext. 52236

Rr. Nurulita Harwaningrum

Banking, Auto, Plantation
roro.harwaningrum@mncgroup.com
(021) 2980 3111 ext. 52237

Khazar Srikandi

Research Associate
Khazar.srikandi@mncgroup.com
(021) 29186313 ext. 52313

M. Rudy Setiawan

Research Associate, Construction
muhamad.setiawan@mncgroup.com
(021) 2980 3111 ext. 52317

Krestanti Nugrahane Widhi

Research Associate, Plantation, Consumer
krestanti.widhi@mncgroup.com
(021) 2980 3111 ext. 52166

Ikhsan H. Santoso

Research Associate
ikhsan.santoso@mncgroup.com
(021) 2980 3111 ext. 52235

Sukisnawati Puspitasari

Research Associate, Cement, Mining
sukisnawati.sari@mncgroup.com
(021) 2980 3111 ext. 52307

MNC Research Investment Ratings Guidance

BUY : Share price may exceed 10% over the next 12 months

HOLD : Share price may fall within the range of +/- 10% of the next 12 months

SELL : Share price may fall by more than 10% over the next 12 months

PT MNC Sekuritas

MNC Financial Center Lt. 14 – 16

Jl. Kebon Sirih No. 21 - 27, Jakarta Pusat 10340

Telp : (021) 2980 3111

Fax : (021) 3983 6899

Call Center : 1500 899

Disclaimer

This research report has been issued by PT MNC Sekuritas. It may not be reproduced or further distributed or published, in whole or in part, for any purpose. PT MNC Sekuritas has based this document on information obtained from sources it believes to be reliable but which it has not independently verified; PT MNC Sekuritas makes no guarantee, representation or warranty and accepts no responsibility to liability as to its accuracy or completeness. Expression of opinion herein are those of the research department only and are subject to change without notice. This document is not and should not be construed as an offer or the solicitation of an offer to purchase or subscribe or sell any investment. PT MNC Sekuritas and its affiliates and/or their offices, directors and employees may own or have positions in any investment mentioned herein or any investment related thereto and may from time to time add to or dispose of any such investment. PT MNC Sekuritas and its affiliates may act as market maker or have assumed an underwriting position in the securities of companies discussed herein (or investment related thereto) and may sell them to or buy them from customers on a principal basis and may also perform or seek to perform investment banking or underwriting services for or relating to those companies.