

IDX-Composite



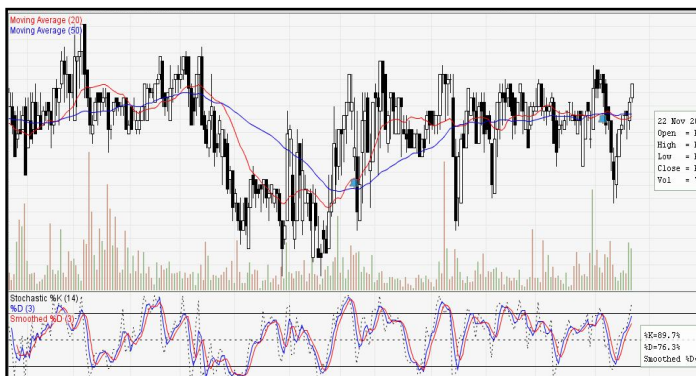
IDX Composite 5,951 - 6,042
Pola White Opening Marubozu terbentuk atas IDX
mengindikasikan peluang berlanjutnya penguatan di hari
Jumat.

United Tractor (UNTR)



UNTR 31300-32400 (TP 2018F:42225) Pola Four Black Crows
terbentuk atas UNTR mengindikasikan Bearish Continuation.
BOW 31775.

PT Indofood CBP Sukses Makmur Tbk (ICBP)



ICBP 8875 - 9075 (TP 2018F:9650). Pola Three White Soldiers
terbentuk atas ICBP mengindikasikan Bullish Continuation.
BUY 8950.

Bank Central Asia Tbk (BBCA)



BBCA 24800-25500 (TP 2018F:25500) Pola Bullish Engulfing
terbentuk atas BBCA mengindikasikan Bearish Reversal.
BUY 25100

Bank Negara Indonesia Tbk (BBNI)



BBNI 8225 - 8600 (TP 2018F:9125) Pola White Candle terbentuk atas BBNI mengindikasikan Bullish Reversal. BUY 8400

Jasa Marga Tbk (JSMR)



JSMR 3930-4070 (TP 2018F:5900). Pola Gravestone Doji terbentuk atas JSMR mengindikasikan Bullish Reversal. BUY 3980.

Waskita Karya Tbk (WSKT)



WSKT 1600 - 1690 (TP 2018F: 2395). Pola White Candle terbentuk atas WSKT mengindikasikan Bullish Reversal. BUY 1635

Unilever Indonesia Tbk (UNVR)



UNVR 40300-41790 (TP 2018F:48000). Pola Two White Soldiers terbentuk atas UNVR mengindikasikan Bearish Continuation. BUY 41125

Wijaya Karya Tbk (WIKA)



WIKA 1310-1440 (TP 2018F:1990). Pola Five White Soldiers mendekati area Overbought terbentuk atas WIKA mengindikasikan Bullish Continuation. BUY 1370

Gudang Garam Tbk (GGRM)



GGRM 79600 - 81500 (TP 2018F:85375) Pola Three Outside Up terbentuk atas GGRM mengindikasikan Bullish Continuation. BUY 80200

1. ITMG (TP 2018F:35600)

Recommendation:

*Go Long at / above 19325. Keep Stoploss at 19300.
Target 1 is 19775.

*Go Long at / above 19500. Keep Stoploss at 19325.
Target 2 is 20075.

*Go Long at / above 19700. Keep Stoploss at 19500.
Target 3 is 20450.

2. BBRI (TP 2017F:4100)

Recommendation:

#Go Short at / below 3550. Keep Stoploss at 3560.
Target 1 is 3470.

#Go Short at / below 3520. Keep Stoploss at 3550.
Target 2 is 3460.

3. PTBA (TP 2018F:4640)

Recommendation:

*Go Long at / above 4190. Keep Stoploss at 4180.
Target 1 is 4280.

*Go Long at / above 4230. Keep Stoploss at 4190.
Target 2 is 4340.

*Go Long at / above 4270. Keep Stoploss at 4230.
Target 3 is 4400.

4. AKRA (TP 2018F:7200)

Recommendation:

#Go Short at / below 4080. Keep Stoploss at 4190.
Target 1 is 3900.

#Go Short at / below 4010. Keep Stoploss at 4080.
Target 2 is 3880.

5. PGAS (TP 2018F:3000)

Recommendation:

*Go Long at / above 1930. Keep Stoploss at 1920.
Target 1 is 1980.

*Go Long at / above 1950. Keep Stoploss at 1930.
Target 2 is 2010.

*Go Long at / above 1970. Keep Stoploss at 1950.
Target 3 is 2040.

6. ANTM (TP 2018F:1200)

Recommendation:

*Go Long at / above 625. Keep Stoploss at 620. Target 1 is 640.

*Go Long at / above 630. Keep Stoploss at 625. Target 2 is 645.

*Go Long at / above 635. Keep Stoploss at 630. Target 3 is 650.

7. BBTN (TP 2018F:4300)

Recommendation:

#Go Short at / below 2570. Keep Stoploss at 2580.
Target 1 is 2450.

#Go Short at / below 2530. Keep Stoploss at 2570.
Target 2 is 2430.

MNC SEKURITAS RESEARCH TEAM

Edwin J. Sebayang

Head of Retail Research, Technical, Auto, Mining
edwin.sebayang@mncgroup.com
(021) 2980 3111 ext. 52233

Thendra Crisnanda

Head of Institutional Research, Strategy
thendra.crisnanda@mncgroup.com
(021) 2980 3111 ext. 52162

I Made Adi Saputra

Head of Fixed Income Research
imade.saputra@mncgroup.com
(021) 2980 3111 ext. 52117

Tomy Zulfikar

Research Analyst
Tomy.zulfikar@mncgroup.com
(021) 29186316 ext. 52316

Victoria Venny

Telco, Toll Road, Logistics, Consumer, Poultry
victoria.nawang@mncgroup.com
(021) 2980 3111 ext. 52236

Rr. Nurulita Harwaningrum

Banking, Auto, Plantation
roro.harwaningrum@mncgroup.com
(021) 2980 3111 ext. 52237

Khazar Srikandi

Research Associate
Khazar.srikandi@mncgroup.com
(021) 29186313 ext. 52313

M. Rudy Setiawan

Research Associate, Construction
muhamad.setiawan@mncgroup.com
(021) 2980 3111 ext. 52317

Krestanti Nugrahane Widhi

Research Associate, Plantation, Consumer
krestanti.widhi@mncgroup.com
(021) 2980 3111 ext. 52166

Ikhsan H. Santoso

Research Associate
ikhsan.santoso@mncgroup.com
(021) 2980 3111 ext. 52235

Sukisnawati Puspitasari

Research Associate, Cement, Mining
sukisnawati.sari@mncgroup.com
(021) 2980 3111 ext. 52307

MNC Research Investment Ratings Guidance

BUY : Share price may exceed 10% over the next 12 months

HOLD : Share price may fall within the range of +/- 10% of the next 12 months

SELL : Share price may fall by more than 10% over the next 12 months

PT MNC Sekuritas

MNC Financial Center Lt. 14 – 16

Jl. Kebon Sirih No. 21 - 27, Jakarta Pusat 10340

Telp : (021) 2980 3111

Fax : (021) 3983 6899

Call Center : 1500 899

Disclaimer

This research report has been issued by PT MNC Sekuritas. It may not be reproduced or further distributed or published, in whole or in part, for any purpose. PT MNC Sekuritas has based this document on information obtained from sources it believes to be reliable but which it has not independently verified; PT MNC Sekuritas makes no guarantee, representation or warranty and accepts no responsibility to liability as to its accuracy or completeness. Expression of opinion herein are those of the research department only and are subject to change without notice. This document is not and should not be construed as an offer or the solicitation of an offer to purchase or subscribe or sell any investment. PT MNC Sekuritas and its affiliates and/or their offices, directors and employees may own or have positions in any investment mentioned herein or any investment related thereto and may from time to time add to or dispose of any such investment. PT MNC Sekuritas and its affiliates may act as market maker or have assumed an underwriting position in the securities of companies discussed herein (or investment related thereto) and may sell them to or buy them from customers on a principal basis and may also perform or seek to perform investment banking or underwriting services for or relating to those companies.