

# DAILY TECHNICAL

MNC Sekuritas Research Division  
28 November 2018



## IDX-Composite



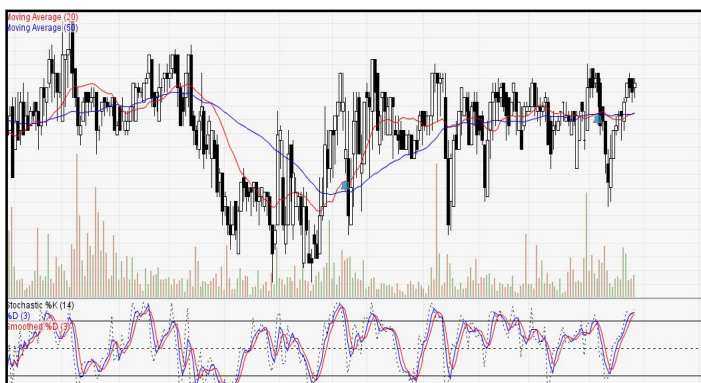
**IDX Composite 5,986- 6,038**  
Pola Homing Pigeon terbentuk atas IDX mengindikasikan melambatnya aksi beli di hari Rabu

## United Tractor (UNTR)



UNTR 29300-30975 (TP 2018F:42225) Pola Two Black Crows terbentuk atas UNTR mengindikasikan Bearish Continuation. BOW 29925

## PT Indofood CBP Sukses Makmur Tbk (ICBP)



ICBP 8850 - 9075 (TP 2018F:9650). Pola Bullish Harami terbentuk atas ICBP mengindikasikan Bearish Reversal. BUY 8950.

## Bank Central Asia Tbk (BBCA)



BBCA 25050-26025 (TP 2018F:25500) Pola Two White Soldiers terbentuk atas BBCA mengindikasikan Bullish Continuation. BUY 25500

Research MNC Sekuritas  
[research@mncsecurities.com](mailto:research@mncsecurities.com)  
(021) 2980 3111 (Hunting)

### Bank Negara Indonesia Tbk (BBNI)



BBNI 8550 - 8800 (TP 2018F:9125) Pola White Closing Marubozu terbentuk atas BBNI mengindikasikan Bullish Reversal. BUY 8650

### Jasa Marga Tbk (JSMR)



JSMR 3910-4070 (TP 2018F:5900). Pola Bullish Harami terbentuk atas JSMR mengindikasikan Bullish Reversal. BUY 4000.

### Waskita Karya Tbk (WSKT)



WSKT 1555 - 1675 (TP 2018F: 2395). Pola Black Candle terbentuk atas WSKT mengindikasikan Bearish Reversal. BOW 1590

### Unilever Indonesia Tbk (UNVR)



UNVR 41800-42700 (TP 2018F:48000). Pola White Closing Marubozu terbentuk atas UNVR mengindikasikan Bullish Reversal. BUY 42250

### Wijaya Karya Tbk (WIKA)



WIKA 1440-1520 (TP 2018F:1990). Pola Spinning Tops di area Overbought terbentuk atas WIKA mengindikasikan munculnya minor profit taking. BOW 1470

### Gudang Garam Tbk (GGRM)



GGRM 79475 - 81025 (TP 2018F:85375) Pola Long White Marubozu terbentuk atas GGRM mengindikasikan Bullish Reversal. BUY 80450

## 1. ITMG (TP 2018F:35600)

Recommendation:

- \*Go Long at / above 19750. Keep Stoploss at 19725. Target 1 is 19975.
- \*Go Long at / above 19825. Keep Stoploss at 19750. Target 2 is 20125.
- \*Go Long at / above 19950. Keep Stoploss at 19825. Target 3 is 20300.

## 2. BBRI (TP 2017F:4100)

Recommendation:

- #Go Short at / below 3620. Keep Stoploss at 3630. Target 1 is 3540.
- #Go Short at / below 3590. Keep Stoploss at 3620. Target 2 is 3520.

## 3. PTBA (TP 2018F:4640)

Recommendation:

- \*Go Long at / above 3850. Keep Stoploss at 3840. Target 1 is 3920.
- \*Go Long at / above 3870. Keep Stoploss at 3850. Target 2 is 3960.
- \*Go Long at / above 3890. Keep Stoploss at 3870. Target 3 is 4000.

## 4. AKRA (TP 2018F:7200)

Recommendation:

- \*Go Long at / above 3840. Keep Stoploss at 3830. Target 1 is 3890.
- \*Go Long at / above 3860. Keep Stoploss at 3840. Target 2 is 3920.
- \*Go Long at / above 3880. Keep Stoploss at 3860. Target 3 is 3960.

## 5. PGAS (TP 2018F:3000)

Recommendation:

- \*Go Long at / above 1905. Keep Stoploss at 1900. Target 1 is 1930.
- \*Go Long at / above 1915. Keep Stoploss at 1905. Target 2 is 1950.
- \*Go Long at / above 1925. Keep Stoploss at 1915. Target 3 is 1970.

## 6. ANTM (TP 2018F:1200)

Recommendation:

- \*Go Long at / above 595. Keep Stoploss at 590. Target 1 is 600.
- \*Go Long at / above 600. Keep Stoploss at 595. Target 2 is 610.
- \*Go Long at / above 605. Keep Stoploss at 600. Target 3 is 620.

## 7. BBTN (TP 2018F:4300)

Recommendation:

- #Go Short at / below 2680. Keep Stoploss at 2690. Target 1 is 2620.
- #Go Short at / below 2660. Keep Stoploss at 2680. Target 2 is 2610.

## MNC SEKURITAS RESEARCH TEAM

### Edwin J. Sebayang

Head of Retail Research, Technical, Auto, Mining  
edwin.sebayang@mncgroup.com  
(021) 2980 3111 ext. 52233

### Thendra Crisnanda

Head of Institutional Research, Strategy  
thendra.crisnanda@mncgroup.com  
(021) 2980 3111 ext. 52162

### I Made Adi Saputra

Head of Fixed Income Research  
imade.saputra@mncgroup.com  
(021) 2980 3111 ext. 52117

### Tomy Zulfikar

Research Analyst  
Tomy.zulfikar@mncgroup.com  
(021) 29186316 ext. 52316

### Victoria Venny

Telco, Toll Road, Logistics, Consumer, Poultry  
victoria.nawang@mncgroup.com  
(021) 2980 3111 ext. 52236

### Rr. Nurulita Harwaningrum

Banking, Auto, Plantation  
roro.harwaningrum@mncgroup.com  
(021) 2980 3111 ext. 52237

### Khazar Srikandi

Research Associate  
Khazar.srikandi@mncgroup.com  
(021) 29186313 ext. 52313

### M. Rudy Setiawan

Research Associate, Construction  
muhamad.setiawan@mncgroup.com  
(021) 2980 3111 ext. 52317

### Krestanti Nugrahane Widhi

Research Associate, Plantation, Consumer  
krestanti.widhi@mncgroup.com  
(021) 2980 3111 ext. 52166

### Ikhsan H. Santoso

Research Associate  
ikhsan.santoso@mncgroup.com  
(021) 2980 3111 ext. 52235

### Sukisnawati Puspitasari

Research Associate, Cement, Mining  
sukisnawati.sari@mncgroup.com  
(021) 2980 3111 ext. 52307

### MNC Research Investment Ratings Guidance

**BUY** : Share price may exceed 10% over the next 12 months

**HOLD** : Share price may fall within the range of +/- 10% of the next 12 months

**SELL** : Share price may fall by more than 10% over the next 12 months

## PT MNC Sekuritas

MNC Financial Center Lt. 14 – 16

Jl. Kebon Sirih No. 21 - 27, Jakarta Pusat 10340

Telp : (021) 2980 3111

Fax : (021) 3983 6899

Call Center : 1500 899

### Disclaimer

*This research report has been issued by PT MNC Sekuritas. It may not be reproduced or further distributed or published, in whole or in part, for any purpose. PT MNC Sekuritas has based this document on information obtained from sources it believes to be reliable but which it has not independently verified; PT MNC Sekuritas makes no guarantee, representation or warranty and accepts no responsibility to liability as to its accuracy or completeness. Expression of opinion herein are those of the research department only and are subject to change without notice. This document is not and should not be construed as an offer or the solicitation of an offer to purchase or subscribe or sell any investment. PT MNC Sekuritas and its affiliates and/or their offices, directors and employees may own or have positions in any investment mentioned herein or any investment related thereto and may from time to time add to or dispose of any such investment. PT MNC Sekuritas and its affiliates may act as market maker or have assumed an underwriting position in the securities of companies discussed herein (or investment related thereto) and may sell them to or buy them from customers on a principal basis and may also perform or seek to perform investment banking or underwriting services for or relating to those companies.*