



IDX-Composite



IDX Composite 5,724 - 5,813
Pola Bullish Meeting Line terbentuk atas IDX
mengindikasikan peluang berlanjutnya penguatan dihari
Senin.

United Tractor (UNTR)



UNTR 31275-32525 (TP 2018F:42225) Pola Piercing terbentuk
atas UNTR mengindikasikan Bullish Reversal. BUY 31675

Barito Pasific Tbk (BRPT)



BRPT 1750 - 1920 (TP 2018F:2550). Pola Gravestone Doji
terbentuk atas BRPT mengindikasikan melambatnya aksi beli.
BUY 1800

Bank Central Asia Tbk (BBCA)



BBCA 23100-23700 (TP 2018F:25500) Pola Bullish Meeting Line
terbentuk atas BBCA mengindikasikan Bullish Reversal. BUY
23250

Bank Negara Indonesia Tbk (BBNI)



BBNI 6800 - 7100 (TP 2018F:9125) Pola Bullish Harami Cross terbentuk atas BBNI mengindikasikan Bullish Reversal. BUY 6925

Jasa Marga Tbk (JSMR)



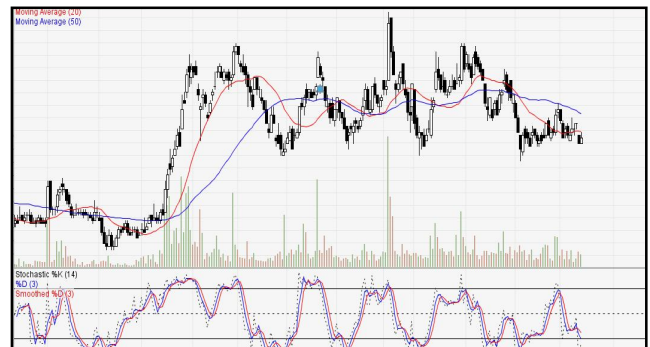
JSMR 4310-4490 (TP 2018F:5900). Pola Bullish Harami terbentuk atas JSMR mengindikasikan Bullish Reversal. BUY 4360.

Indah Kiat Pulp & Paper Tbk (INKP)



INKP 13850 - 14650 (TP 2018F:20750). Pola Bullish Harami terbentuk atas INKP mengindikasikan Bullish Reversal. BUY 14300

Aneka Tambang Tbk (ANTM)



ANTM 785-825 (TP 2018F:1215). Pola Bullish Harami terbentuk atas ANTM mengindikasikan Bullish Reversal. BUY 795

Adaro Energy Tbk (ADRO)



ADRO 1690 - 1750 (TP 2018F:2600) Pola Four Price Doji terbentuk atas ADRO mengindikasikan melambatnya aksi jual. BOW 1700.

Gudang Garam Tbk (GGRM)



GGRM 73450 - 75100 (TP 2018F:85375) Pola Dark Cloud Cover terbentuk atas GGRM mengindikasikan Bearish Reversal. BOW 74250

1. ITMG (TP 2018F:35600)*Recommendation:*

- *Go Long at / above 24750. Keep Stoploss at 24725. Target 1 is 24900.*
- *Go Long at / above 24800. Keep Stoploss at 24725. Target 2 is 25000.*
- *Go Long at / above 24900. Keep Stoploss at 24800. Target 3 is 25150.*

2. BBRI (TP 2017F:4100)*Recommendation:*

- #Go Short at / below 2960. Keep Stoploss at 2970. Target 1 is 2940.*
- #Go Short at / below 2950. Keep Stoploss at 2960. Target 2 is 2930.*

3. PTBA (TP 2018F:4640)*Recommendation:*

- #Go Short at / below 4600. Keep Stoploss at 4610. Target 1 is 4540.*
- #Go Short at / below 4580. Keep Stoploss at 4600. Target 2 is 4530.*

4. AKRA (TP 2018F:7200)*Recommendation:*

- #Go Short at / below 3820. Keep Stoploss at 3830. Target 1 is 3790.*
- #Go Short at / below 3810. Keep Stoploss at 3820. Target 2 is 3780.*

5. PGAS (TP 2018F:3000)*Recommendation:*

- *Go Long at / above 2130. Keep Stoploss at 2120. Target 1 is 2160.*
- *Go Long at / above 2140. Keep Stoploss at 2130. Target 2 is 2180.*
- *Go Long at / above 2150. Keep Stoploss at 2140. Target 3 is 2200.*

6. ANTM (TP 2018F:1200)*Recommendation:*

- *Go Long at / above 785. Keep Stoploss at 780. Target 1 is 795.*
- *Go Long at / above 790. Keep Stoploss at 785. Target 2 is 800.*
- *Go Long at / above 795. Keep Stoploss at 790. Target 3 is 805.*

7. BBTN (TP 2018F:4300)*Recommendation:*

- *Go Long at / above 2300. Keep Stoploss at 2290. Target 1 is 2320.*
- *Go Long at / above 2310. Keep Stoploss at 2300. Target 2 is 2330.*
- *Go Long at / above 2320. Keep Stoploss at 2310. Target 3 is 2350.*

MNC SEKURITAS RESEARCH TEAM

Edwin J. Sebayang

Head of Retail Research, Technical, Auto, Mining
edwin.sebayang@mncgroup.com
(021) 2980 3111 ext. 52233

Thendra Crisnanda

Head of Institutional Research, Strategy
thendra.crisnanda@mncgroup.com
(021) 2980 3111 ext. 52162

I Made Adi Saputra

Head of Fixed Income Research
imade.saputra@mncgroup.com
(021) 2980 3111 ext. 52117

Tomy Zulfikar

Research Analyst
Tomy.zulfikar@mncgroup.com
(021) 29186316 ext. 52316

Victoria Venny

Telco, Toll Road, Logistics, Consumer, Poultry
victoria.nawang@mncgroup.com
(021) 2980 3111 ext. 52236

Rr. Nurulita Harwaningrum

Banking, Auto, Plantation
roro.harwaningrum@mncgroup.com
(021) 2980 3111 ext. 52237

Khazar Srikandi

Research Associate
Khazar.srikandi@mncgroup.com
(021) 29186313 ext. 52313

M. Rudy Setiawan

Research Associate, Construction
muhamad.setiawan@mncgroup.com
(021) 2980 3111 ext. 52317

Krestanti Nugrahane Widhi

Research Associate, Plantation, Consumer
krestanti.widhi@mncgroup.com
(021) 2980 3111 ext. 52166

Ikhsan H. Santoso

Research Associate
ikhsan.santoso@mncgroup.com
(021) 2980 3111 ext. 52235

Sukisnawati Puspitasari

Research Associate, Cement, Mining
sukisnawati.sari@mncgroup.com
(021) 2980 3111 ext. 52307

MNC Research Investment Ratings Guidance

BUY : Share price may exceed 10% over the next 12 months

HOLD : Share price may fall within the range of +/- 10% of the next 12 months

SELL : Share price may fall by more than 10% over the next 12 months

PT MNC Sekuritas

MNC Financial Center Lt. 14 – 16

Jl. Kebon Sirih No. 21 - 27, Jakarta Pusat 10340

Telp : (021) 2980 3111

Fax : (021) 3983 6899

Call Center : 1500 899

Disclaimer

This research report has been issued by PT MNC Sekuritas. It may not be reproduced or further distributed or published, in whole or in part, for any purpose. PT MNC Sekuritas has based this document on information obtained from sources it believes to be reliable but which it has not independently verified; PT MNC Sekuritas makes no guarantee, representation or warranty and accepts no responsibility to liability as to its accuracy or completeness. Expression of opinion herein are those of the research department only and are subject to change without notice. This document is not and should not be construed as an offer or the solicitation of an offer to purchase or subscribe or sell any investment. PT MNC Sekuritas and its affiliates and/or their offices, directors and employees may own or have positions in any investment mentioned herein or any investment related thereto and may from time to time add to or dispose of any such investment. PT MNC Sekuritas and its affiliates may act as market maker or have assumed an underwriting position in the securities of companies discussed herein (or investment related thereto) and may sell them to or buy them from customers on a principal basis and may also perform or seek to perform investment banking or underwriting services for or relating to those companies.