



## IDX-Composite



**IDX Composite 5,683 - 5,772**  
Pola Bearish Engulfing terbentuk atas IDX mengindikasikan peluang berlanjutnya profit taking dihari Selasa.

## United Tractor (UNTR)



**UNTR 30800-31875 (TP 2018F:42225)** Pola Dark Cloud Cover terbentuk atas UNTR mengindikasikan Bearish Reversal.  
BOW 31425

## Barito Pasific Tbk (BRPT)



**BRPT 1720 - 1820 (TP 2018F:2550).** Pola Bearish Harami terbentuk atas BRPT mengindikasikan Bearish Reversal.  
BOW 1750

## Bank Central Asia Tbk (BBCA)



**BBCA 23600-24100 (TP 2018F:25500)** Pola Three Outside Up terbentuk atas BBKA mengindikasikan Bullish Continuation.  
BUY 23850

### Bank Negara Indonesia Tbk (BBNI)



BBNI 6925 - 7250 (TP 2018F:9125) Pola White Marubozu terbentuk atas BBNI mengindikasikan Bullish Reversal. BUY 7050

### Jasa Marga Tbk (JSMR)



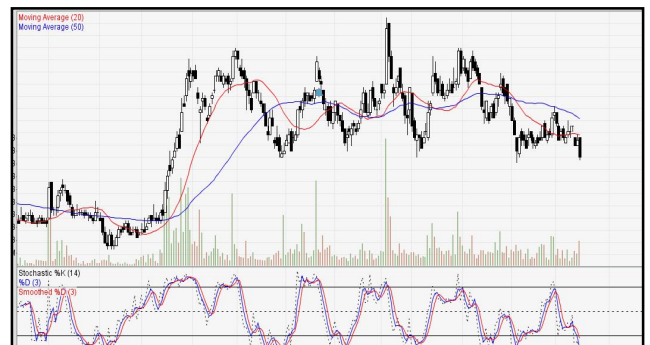
JSMR 4220-4380 (TP 2018F:5900). Pola Bearish Engulfing terbentuk atas JSMR mengindikasikan Bearish Reversal. BOW 4290.

### Indah Kiat Pulp & Paper Tbk (INKP)



INKP 10775 - 13550 (TP 2018F:20750). Pola Bearish Engulfing terbentuk atas INKP mengindikasikan Bearish Reversal. BOW 11675

### Aneka Tambang Tbk (ANTM)



ANTM 735-815 (TP 2018F:1215). Pola Bearish Engulfing terbentuk atas ANTM mengindikasikan Bearish Reversal. BOW 760

### Adaro Energy Tbk (ADRO)



ADRO 1640 - 1710 (TP 2018F:2600) Pola Black Closing Marubozu terbentuk atas ADRO mengindikasikan Bearish Reversal. BOW 1670.

### Gudang Garam Tbk (GGRM)



GGRM 71500 - 74900 (TP 2018F:85375) Pola Two Black Crows terbentuk atas GGRM mengindikasikan Bearish Continuation. BOW 73175

1. ITMG (TP 2018F:35600)

*Recommendation:*

- \*Go Long at / above 24725. Keep Stoploss at 24700. Target 1 is 24875.
- \*Go Long at / above 24775. Keep Stoploss at 24700. Target 2 is 24975.
- \*Go Long at / above 24850. Keep Stoploss at 24775. Target 3 is 25100.

2. BBRI (TP 2017F:4100)

*Recommendation:*

- #Go Short at / below 3030. Keep Stoploss at 3040. Target 1 is 2980.
- #Go Short at / below 3010. Keep Stoploss at 3030. Target 2 is 2980.

3. PTBA (TP 2018F:4640)

*Recommendation:*

- \*Go Long at / above 4440. Keep Stoploss at 4430. Target 1 is 4500.
- \*Go Long at / above 4460. Keep Stoploss at 4440. Target 2 is 4550.
- \*Go Long at / above 4490. Keep Stoploss at 4460. Target 3 is 4600.

4. AKRA (TP 2018F:7200)

*Recommendation:*

- \*Go Long at / above 3500. Keep Stoploss at 3490. Target 1 is 3600.
- \*Go Long at / above 3540. Keep Stoploss at 3500. Target 2 is 3670.
- \*Go Long at / above 3580. Keep Stoploss at 3510. Target 3 is 3750.

5. PGAS (TP 2018F:3000)

*Recommendation:*

- \*Go Long at / above 2040. Keep Stoploss at 2030. Target 1 is 2090.
- \*Go Long at / above 2060. Keep Stoploss at 2040. Target 2 is 2120.
- \*Go Long at / above 2080. Keep Stoploss at 2050. Target 3 is 2160.

6. ANTM (TP 2018F:1200)

*Recommendation:*

- \*Go Long at / above 760. Keep Stoploss at 755. Target 1 is 775.
- \*Go Long at / above 765. Keep Stoploss at 760. Target 2 is 785.
- \*Go Long at / above 775. Keep Stoploss at 765. Target 3 is 795.

7. BBTN (TP 2018F:4300)

*Recommendation:*

- \*Go Long at / above 2320. Keep Stoploss at 2310. Target 1 is 2340.
- \*Go Long at / above 2330. Keep Stoploss at 2320. Target 2 is 2350.
- \*Go Long at / above 2340. Keep Stoploss at 2330. Target 3 is 2370.

## MNC SEKURITAS RESEARCH TEAM

### Edwin J. Sebayang

Head of Retail Research, Technical, Auto, Mining  
edwin.sebayang@mncgroup.com  
(021) 2980 3111 ext. 52233

### Thendra Crisnanda

Head of Institutional Research, Strategy  
thendra.crisnanda@mncgroup.com  
(021) 2980 3111 ext. 52162

### I Made Adi Saputra

Head of Fixed Income Research  
imade.saputra@mncgroup.com  
(021) 2980 3111 ext. 52117

### Tomy Zulfikar

Research Analyst  
Tomy.zulfikar@mncgroup.com  
(021) 29186316 ext. 52316

### Victoria Venny

Telco, Toll Road, Logistics, Consumer, Poultry  
victoria.nawang@mncgroup.com  
(021) 2980 3111 ext. 52236

### Rr. Nurulita Harwaningrum

Banking, Auto, Plantation  
roro.harwaningrum@mncgroup.com  
(021) 2980 3111 ext. 52237

### Khazar Srikandi

Research Associate  
Khazar.srikandi@mncgroup.com  
(021) 29186313 ext. 52313

### M. Rudy Setiawan

Research Associate, Construction  
muhamad.setiawan@mncgroup.com  
(021) 2980 3111 ext. 52317

### Krestanti Nugrahane Widhi

Research Associate, Plantation, Consumer  
krestanti.widhi@mncgroup.com  
(021) 2980 3111 ext. 52166

### Ikhsan H. Santoso

Research Associate  
ikhsan.santoso@mncgroup.com  
(021) 2980 3111 ext. 52235

### Sukisnawati Puspitasari

Research Associate, Cement, Mining  
sukisnawati.sari@mncgroup.com  
(021) 2980 3111 ext. 52307

### MNC Research Investment Ratings Guidance

**BUY** : Share price may exceed 10% over the next 12 months

**HOLD** : Share price may fall within the range of +/- 10% of the next 12 months

**SELL** : Share price may fall by more than 10% over the next 12 months

## PT MNC Sekuritas

MNC Financial Center Lt. 14 – 16

Jl. Kebon Sirih No. 21 - 27, Jakarta Pusat 10340

Telp : (021) 2980 3111

Fax : (021) 3983 6899

Call Center : 1500 899

### Disclaimer

*This research report has been issued by PT MNC Sekuritas. It may not be reproduced or further distributed or published, in whole or in part, for any purpose. PT MNC Sekuritas has based this document on information obtained from sources it believes to be reliable but which it has not independently verified; PT MNC Sekuritas makes no guarantee, representation or warranty and accepts no responsibility to liability as to its accuracy or completeness. Expression of opinion herein are those of the research department only and are subject to change without notice. This document is not and should not be construed as an offer or the solicitation of an offer to purchase or subscribe or sell any investment. PT MNC Sekuritas and its affiliates and/or their offices, directors and employees may own or have positions in any investment mentioned herein or any investment related thereto and may from time to time add to or dispose of any such investment. PT MNC Sekuritas and its affiliates may act as market maker or have assumed an underwriting position in the securities of companies discussed herein (or investment related thereto) and may sell them to or buy them from customers on a principal basis and may also perform or seek to perform investment banking or underwriting services for or relating to those companies.*