



## IDX-Composite



**IDX Composite 5,738 - 5,828**  
**Pola Three Inside Up terbentuk atas IDX mengindikasikan peluang Berlanjutnya Penguatan dihari Senin**

## United Tractor (UNTR)



**UNTR 31500-32600 (TP 2018F:42225) Pola White Marubozu terbentuk atas UNTR mengindikasikan Bullish Reversal. BUY 32050**

## Barito Pasific Tbk (BRPT)



**BRPT 1780 - 1860 (TP 2018F:2550). Pola Bullish Engulfing terbentuk atas BRPT mengindikasikan Bullish Reversal. BUY 1820**

## Bank Central Asia Tbk (BBCA)



**BBCA 22550-23250 (TP 2018F:25500) Pola Piercing terbentuk atas BBCA mengindikasikan Bullish Reversal. BUY 22900**

**Bank Negara Indonesia Tbk (BBNI)**



BBNI 690p - 7225 (TP 2018F:9125) Pola Bullish Meeting Line terbentuk atas BBNI mengindikasikan Bullish Reversal. BUY 7100

**Jasa Marga Tbk (JSMR)**



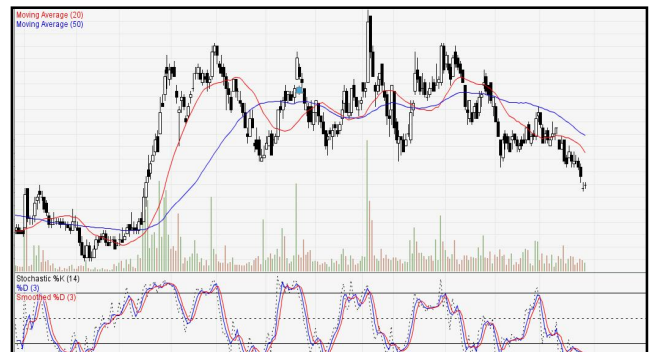
JSMR 4080-4320 (TP 2018F:5900). Pola Piercing terbentuk atas JSMR mengindikasikan Bullish Reversal. BUY 4200.

**Indah Kiat Pulp & Paper Tbk (INKP)**



INKP 10625 - 13300 (TP 2018F:20750). Pola Bullish Engulfing terbentuk atas INKP mengindikasikan Bullish Reversal. BUY 11950

**Aneka Tambang Tbk (ANTM)**



ANTM 690-750 (TP 2018F:1215). Pola Three Black Crows terbentuk atas ANTM mengindikasikan Bearish Continuation. BOW 710

**Adaro Energy Tbk (ADRO)**



ADRO 1600 - 1680 (TP 2018F:2600) Pola Three Black Crows terbentuk atas ADRO mengindikasikan Bearish Continuation. BOW 1640.

**Gudang Garam Tbk (GGRM)**



GGRM 72825 - 76550 (TP 2018F:85375) Pola Three Black Crows terbentuk atas GGRM mengindikasikan Bearish Continuation. BOW 74050

## 1. ITMG (TP 2018F:35600)

Recommendation:

#Go Short at / below 27000. Keep Stoploss at 27025. Target 1 is 26450.

#Go Short at / below 26800. Keep Stoploss at 27025. Target 2 is 26350.

## 2. BBRI (TP 2017F:4100)

Recommendation:

\*Go Long at / above 2980. Keep Stoploss at 2970. Target 1 is 3000.

\*Go Long at / above 2990. Keep Stoploss at 2980. Target 2 is 3010.

\*Go Long at / above 3000. Keep Stoploss at 2990. Target 3 is 3020.

## 3. PTBA (TP 2018F:4640)

Recommendation:

\*Go Long at / above 4250. Keep Stoploss at 4240. Target 1 is 4340.

\*Go Long at / above 4280. Keep Stoploss at 4250. Target 2 is 4400.

\*Go Long at / above 4330. Keep Stoploss at 4280. Target 3 is 4460.

## 4. AKRA (TP 2018F:7200)

Recommendation:

#Go Short at / below 3600. Keep Stoploss at 3610. Target 1 is 3520.

#Go Short at / below 3570. Keep Stoploss at 3600. Target 2 is 3500.

## 5. PGAS (TP 2018F:3000)

Recommendation:

#Go Short at / below 3680. Keep Stoploss at 3690.

Target 1 is 3620.

#Go Short at / below 3650. Keep Stoploss at 3680.

Target 2 is 3600.

## 6. ANTM (TP 2018F:1200)

Recommendation:

#Go Short at / below 730. Keep Stoploss at 740.

Target 1 is 730.

#Go Short at / below 720. Keep Stoploss at 730.

Target 2 is 720.

## 7. BBTN (TP 2018F:4300)

Recommendation:

\*Go Long at / above 2130. Keep Stoploss at 2120.

Target 1 is 2160.

\*Go Long at / above 2140. Keep Stoploss at 2130.

Target 2 is 2180.

\*Go Long at / above 2150. Keep Stoploss at 2140.

Target 3 is 2200.

## MNC SEKURITAS RESEARCH TEAM

### Edwin J. Sebayang

Head of Retail Research, Technical, Auto, Mining  
edwin.sebayang@mncgroup.com  
(021) 2980 3111 ext. 52233

### Thendra Crisnanda

Head of Institutional Research, Strategy  
thendra.crisnanda@mncgroup.com  
(021) 2980 3111 ext. 52162

### I Made Adi Saputra

Head of Fixed Income Research  
imade.saputra@mncgroup.com  
(021) 2980 3111 ext. 52117

### Tomy Zulfikar

Research Analyst  
Tomy.zulfikar@mncgroup.com  
(021) 29186316 ext. 52316

### Victoria Venny

Telco, Toll Road, Logistics, Consumer, Poultry  
victoria.nawang@mncgroup.com  
(021) 2980 3111 ext. 52236

### Rr. Nurulita Harwaningrum

Banking, Auto, Plantation  
roro.harwaningrum@mncgroup.com  
(021) 2980 3111 ext. 52237

### Khazar Srikandi

Research Associate  
Khazar.srikandi@mncgroup.com  
(021) 29186313 ext. 52313

### M. Rudy Setiawan

Research Associate, Construction  
muhamad.setiawan@mncgroup.com  
(021) 2980 3111 ext. 52317

### Krestanti Nugrahane Widhi

Research Associate, Plantation, Consumer  
krestanti.widhi@mncgroup.com  
(021) 2980 3111 ext. 52166

### Ikhsan H. Santoso

Research Associate  
ikhsan.santoso@mncgroup.com  
(021) 2980 3111 ext. 52235

### Sukisnawati Puspitasari

Research Associate, Cement, Mining  
sukisnawati.sari@mncgroup.com  
(021) 2980 3111 ext. 52307

### MNC Research Investment Ratings Guidance

**BUY** : Share price may exceed 10% over the next 12 months

**HOLD** : Share price may fall within the range of +/- 10% of the next 12 months

**SELL** : Share price may fall by more than 10% over the next 12 months

## PT MNC Sekuritas

MNC Financial Center Lt. 14 – 16

Jl. Kebon Sirih No. 21 - 27, Jakarta Pusat 10340

Telp : (021) 2980 3111

Fax : (021) 3983 6899

Call Center : 1500 899

### Disclaimer

*This research report has been issued by PT MNC Sekuritas. It may not be reproduced or further distributed or published, in whole or in part, for any purpose. PT MNC Sekuritas has based this document on information obtained from sources it believes to be reliable but which it has not independently verified; PT MNC Sekuritas makes no guarantee, representation or warranty and accepts no responsibility to liability as to its accuracy or completeness. Expression of opinion herein are those of the research department only and are subject to change without notice. This document is not and should not be construed as an offer or the solicitation of an offer to purchase or subscribe or sell any investment. PT MNC Sekuritas and its affiliates and/or their offices, directors and employees may own or have positions in any investment mentioned herein or any investment related thereto and may from time to time add to or dispose of any such investment. PT MNC Sekuritas and its affiliates may act as market maker or have assumed an underwriting position in the securities of companies discussed herein (or investment related thereto) and may sell them to or buy them from customers on a principal basis and may also perform or seek to perform investment banking or underwriting services for or relating to those companies.*