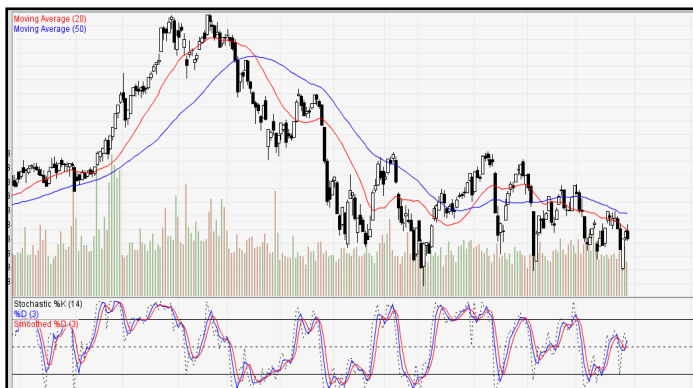
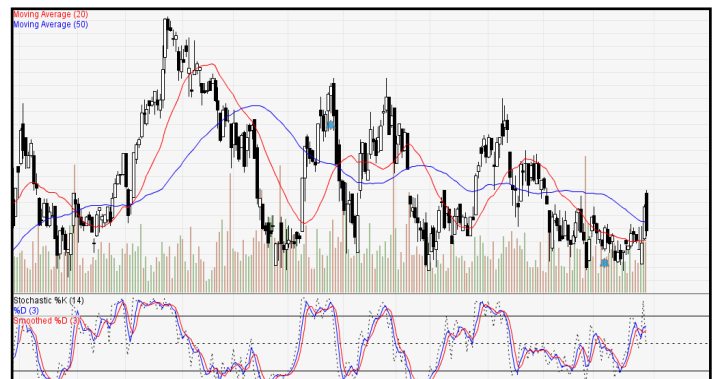


IDX-Composite



IDX Composite 5,693 - 5,782
Pola Bearish Engulfing terbentuk atas IDX mengindikasikan peluang Berlanjutnya tekanan jual dihari Selasa.

United Tractor (UNTR)



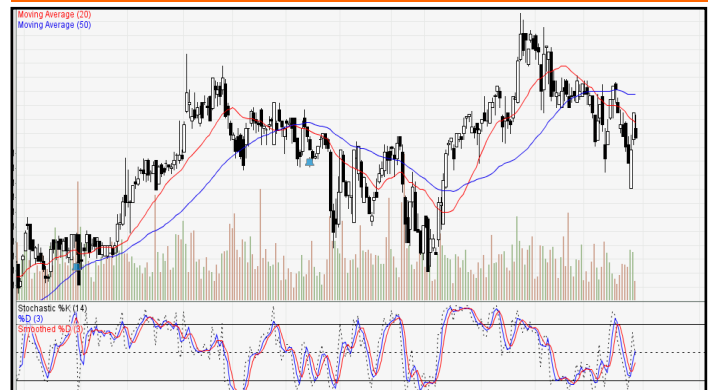
UNTR 32000-33000 (TP 2018F:42225) Pola Two Black Crows terbentuk atas UNTR mengindikasikan Bearish Continuation.
BOW 32475

Barito Pasific Tbk (BRPT)



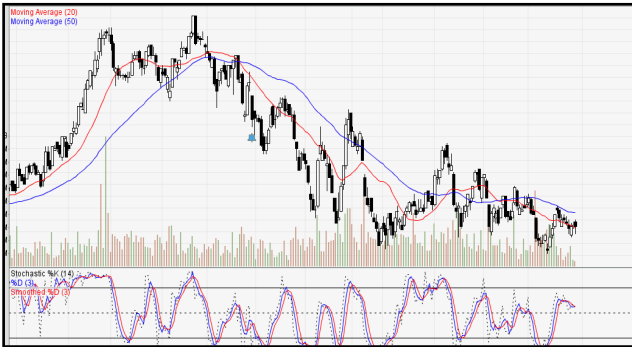
BRPT 1740 - 1830 (TP 2018F:2550). Pola Bearish Harami terbentuk atas BRPT mengindikasikan Bearish Reversal.
BOW 1770

Bank Central Asia Tbk (BBCA)



BBCA 22600-23600 (TP 2018F:25500) Pola Bearish Engulfing terbentuk atas BBCA mengindikasikan Bearish Reversal.
BOW 23100

Bank Negara Indonesia Tbk (BBNI)



BBNI 6850 - 7175 (TP 2018F:9125) Pola Spinning Tops terbentuk atas BBNI mengindikasikan munculnya minor profit taking. BOW 7050

Jasa Marga Tbk (JSMR)



JSMR 4100-4300 (TP 2018F:5900). Pola Bullish Meeting Line terbentuk atas JSMR mengindikasikan Bullish Reversal. BUY 4180.

Indah Kiat Pulp & Paper Tbk (INKP)



INKP 11000 - 13000 (TP 2018F:20750). Pola Three Inside Up terbentuk atas INKP mengindikasikan Bullish Continuation. BUY 11750

Aneka Tambang Tbk (ANTM)



ANTM 680-740 (TP 2018F:1215). Pola Two Black Crows terbentuk atas ANTM mengindikasikan Bearish Continuation. BOW 700

Adaro Energy Tbk (ADRO)



ADRO 1615 - 1715 (TP 2018F:2600) Pola Morning Doji Star terbentuk atas ADRO mengindikasikan melambatnya aksi beli.

Gudang Garam Tbk (GGRM)



GGRM 72175 - 74200 (TP 2018F:85375) Pola Four Black Crows terbentuk atas GGRM mengindikasikan Bearish Continuation. BOW 73175

1. ITMG (TP 2018F:35600)

Recommendation:

#Go Short at / below 27000. Keep Stoploss at 27025. Target 1 is 26450.

#Go Short at / below 26800. Keep Stoploss at 27025. Target 2 is 26350.

2. BBRI (TP 2017F:4100)

Recommendation:

*Go Long at / above 2980. Keep Stoploss at 2970. Target 1 is 3000.

*Go Long at / above 2990. Keep Stoploss at 2980. Target 2 is 3010.

*Go Long at / above 3000. Keep Stoploss at 2990. Target 3 is 3020.

3. PTBA (TP 2018F:4640)

Recommendation:

*Go Long at / above 4250. Keep Stoploss at 4240. Target 1 is 4340.

*Go Long at / above 4280. Keep Stoploss at 4250. Target 2 is 4400.

*Go Long at / above 4330. Keep Stoploss at 4280. Target 3 is 4460.

4. AKRA (TP 2018F:7200)

Recommendation:

#Go Short at / below 3600. Keep Stoploss at 3610. Target 1 is 3520.

#Go Short at / below 3570. Keep Stoploss at 3600. Target 2 is 3500.

5. PGAS (TP 2018F:3000)

Recommendation:

#Go Short at / below 3680. Keep Stoploss at 3690.

Target 1 is 3620.

#Go Short at / below 3650. Keep Stoploss at 3680.

Target 2 is 3600.

6. ANTM (TP 2018F:1200)

Recommendation:

#Go Short at / below 730. Keep Stoploss at 740.

Target 1 is 730.

#Go Short at / below 720. Keep Stoploss at 730.

Target 2 is 720.

7. BBTN (TP 2018F:4300)

Recommendation:

*Go Long at / above 2130. Keep Stoploss at 2120.

Target 1 is 2160.

*Go Long at / above 2140. Keep Stoploss at 2130.

Target 2 is 2180.

*Go Long at / above 2150. Keep Stoploss at 2140.

Target 3 is 2200.

MNC SEKURITAS RESEARCH TEAM

Edwin J. Sebayang

Head of Retail Research, Technical, Auto, Mining
edwin.sebayang@mncgroup.com
(021) 2980 3111 ext. 52233

Thendra Crisnanda

Head of Institutional Research, Strategy
thendra.crisnanda@mncgroup.com
(021) 2980 3111 ext. 52162

I Made Adi Saputra

Head of Fixed Income Research
imade.saputra@mncgroup.com
(021) 2980 3111 ext. 52117

Tomy Zulfikar

Research Analyst
Tomy.zulfikar@mncgroup.com
(021) 29186316 ext. 52316

Victoria Venny

Telco, Toll Road, Logistics, Consumer, Poultry
victoria.nawang@mncgroup.com
(021) 2980 3111 ext. 52236

Rr. Nurulita Harwaningrum

Banking, Auto, Plantation
roro.harwaningrum@mncgroup.com
(021) 2980 3111 ext. 52237

Khazar Srikandi

Research Associate
Khazar.srikandi@mncgroup.com
(021) 29186313 ext. 52313

M. Rudy Setiawan

Research Associate, Construction
muhamad.setiawan@mncgroup.com
(021) 2980 3111 ext. 52317

Krestanti Nugrahane Widhi

Research Associate, Plantation, Consumer
krestanti.widhi@mncgroup.com
(021) 2980 3111 ext. 52166

Ikhsan H. Santoso

Research Associate
ikhsan.santoso@mncgroup.com
(021) 2980 3111 ext. 52235

Sukisnawati Puspitasari

Research Associate, Cement, Mining
sukisnawati.sari@mncgroup.com
(021) 2980 3111 ext. 52307

MNC Research Investment Ratings Guidance

BUY : Share price may exceed 10% over the next 12 months

HOLD : Share price may fall within the range of +/- 10% of the next 12 months

SELL : Share price may fall by more than 10% over the next 12 months

PT MNC Sekuritas

MNC Financial Center Lt. 14 – 16

Jl. Kebon Sirih No. 21 - 27, Jakarta Pusat 10340

Telp : (021) 2980 3111

Fax : (021) 3983 6899

Call Center : 1500 899

Disclaimer

This research report has been issued by PT MNC Sekuritas. It may not be reproduced or further distributed or published, in whole or in part, for any purpose. PT MNC Sekuritas has based this document on information obtained from sources it believes to be reliable but which it has not independently verified; PT MNC Sekuritas makes no guarantee, representation or warranty and accepts no responsibility to liability as to its accuracy or completeness. Expression of opinion herein are those of the research department only and are subject to change without notice. This document is not and should not be construed as an offer or the solicitation of an offer to purchase or subscribe or sell any investment. PT MNC Sekuritas and its affiliates and/or their offices, directors and employees may own or have positions in any investment mentioned herein or any investment related thereto and may from time to time add to or dispose of any such investment. PT MNC Sekuritas and its affiliates may act as market maker or have assumed an underwriting position in the securities of companies discussed herein (or investment related thereto) and may sell them to or buy them from customers on a principal basis and may also perform or seek to perform investment banking or underwriting services for or relating to those companies.